

# GUEST®

For Harsh Environment Applications

Industrial Battery Chargers

Mobility Chargers

Battery Switches

Spotlights and more.



# What's New from **GUEST**®

## Intelligent Charging System

The most advanced chargers ever developed by Guest: microprocessor-controlled, user-friendly, efficient and reliable. The user can select the battery type per individual charger output, to match the precise charging needs. All in a charger that maintains the Guest heritage of harsh-environment performance. **Page 3**



## ChargePro Plus Charger System



## Battery Chargers and Voltage Sensitive Relay Modules

Users can run battery-operated accessories longer *and* recharge when the alternator is running. Harness previously unused or wasted alternator power for use by a vehicle's house battery/DC accessory system, for the utmost in charging efficiency and economy. **Page 2**

## Poor Power Quality? Harsh Conditions? Rough Handling? *We Love Them!*

The original Guest chargers were designed for marine conditions: poor dockside power quality, exposure to extreme weather and very rough handling. Our epoxy-potted cases are the ultimate in durability – completely waterproof and able to withstand numerous caustic chemicals and gases, as well as being shockproof. All of our 115V chargers can handle input power fluctuating from 100 - 130V AC and between 50 - 60Hz.

Our three-stage chargers are also lighter than transformer types, completely silent, and still provide full output when overloaded outlets drop AC input below the normal 115 volts. All Guest chargers have a full two-year warranty.

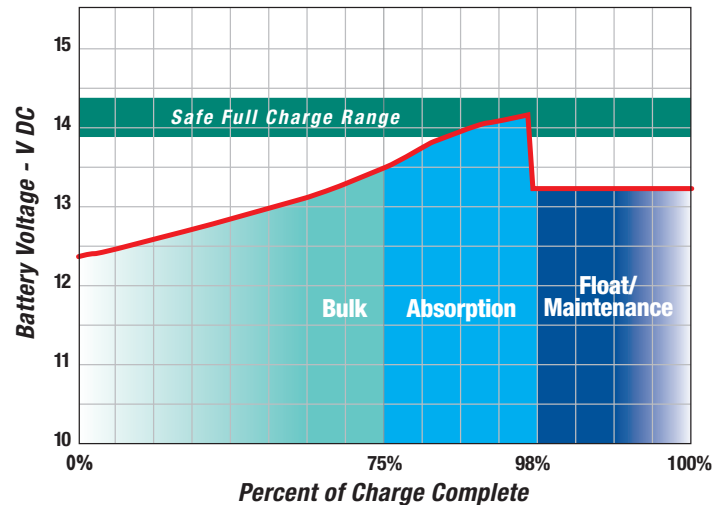
# GUEST®

## 3-Stage Chargers Maximize Battery Life

More batteries are ruined by improper charging than by over-use. The safest, most efficient way to charge batteries without making them too hot or boiling off electrolyte is in three distinct stages:

- **Bulk Stage:** The charger uses its full amp output (constant current), while the battery voltage rises.
- **Absorption Stage:** The charger regulates the battery voltage at a peak level (constant voltage) while the current flow to the battery decreases.
- **Float or Maintenance Stage:** Unlike some “trickle chargers,” which apply a constant current to the battery, the Guest float-charge technology only supplies current at the rate it will be accepted by the battery.

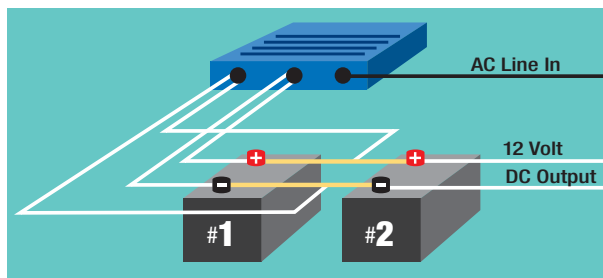
**Guest 3-Stage Charging Modes**



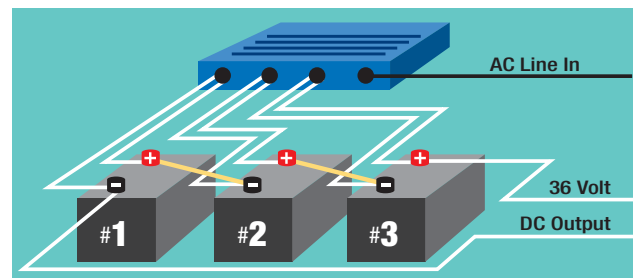
### Guest Chargers at Work in Multiple Battery Configurations

In multi-battery applications, the needs of the individual batteries may vary. A “starting” battery, replenished by the alternator, requires a different kind of charge than a deeply-depleted constant-use battery.

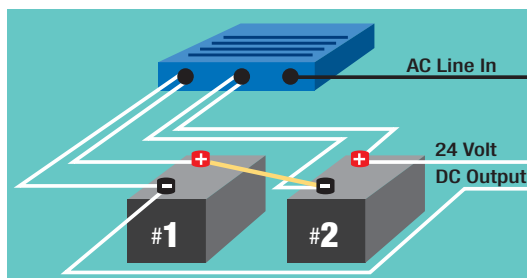
Guest exclusive multiple-output models include separate boards within the charger housing. Each board functions independently in the charging scheme, and has dedicated cables for its battery, so it can adjust and optimize the charger’s performance for that battery.



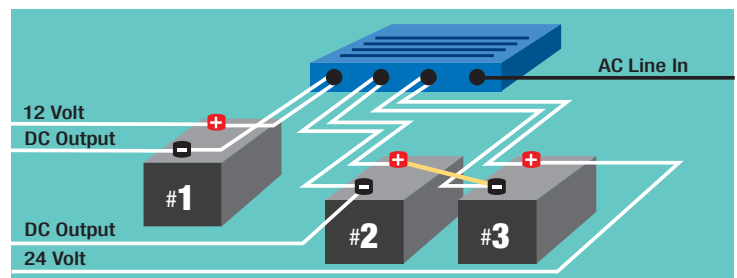
12 Volt (parallel)



36 Volt (series)



24 Volt (series)



12V / 24V-12

# C o n t e n t s

<b>2</b>	ChargePro Plus Chargers
<b>3</b>	Intelligent Charging System (ICS)
<b>4</b>	Portable Chargers Single-Battery On-Board Chargers
<b>6</b>	Dual-Battery On-Board Chargers
<b>8</b>	Triple-Battery On-Board Chargers
<b>9</b>	XD Extreme-Duty Chargers
<b>10</b>	Mobility Chargers
<b>12</b>	Genset Chargers
<b>13</b>	Battery Switches & Battery Isolators
<b>14</b>	Beamer™ Remote Control Spotlights
<b>15</b>	ConnectCharge™ Inlets
<b>16</b>	Charger Specification Guide
<b>17</b>	3-Stage Charging Detail Multiple-Battery Outputs

## How to Choose Your Charger

This catalog is conveniently organized into product types (see right). Visit our website for more detailed product information:

[www.guestindustrial.com](http://www.guestindustrial.com).

Our Charger Specification Guide (see page 16) is a useful tool to help you organize information about your application and charger requirements. Providing answers to as many of these questions as possible will enable Guest to help you specify the correct charger.

In addition, for systems design projects or other technical-support issues, the seasoned Guest applications and engineering team can assist you.

For close-tolerance applications, precise dimensions or other design information, users are advised to request specific dimensional information from Guest.

## Product Index

MODEL	PG.	MODEL	PG.	MODEL	PG.	MODEL	PG.
<b>Battery Chargers and Accessories</b>		2620-1-B	7	36082S	2	2112A	13
2602A-12	5,12	2622A	9	36012	2	2300A	13
2602A-12-B	5,12	2622A-230	9	36024	2	2303A	13
2602A-24-B	5,7	2623A	8	36202S	2	2304A	13
2603	5	2631A	8	729749-P	2	2501	13
2603-B	5	2632A	9	<b>Other Guest Brand Products</b>		2502	13
2605A-1-24	7	2632A-230	9	500A	14	2503	13
2605A-1-24RT-01	7,12	2633A	9	501A	14	2504	13
2606A	5	2633A-230	9	502-1	14	2530	13
2606A-B	5	2722-B	7	502-2	14	2532	13
2607A	7	2800-1	11	502A	14	22208-24	14
2607A-B	7	2903-1-24	7	503-1	14	729489	14
2608A	5	2904-24U	11	503-2	14	729823-P	14
2608A-B	5	2904-24LU	11	503A	14	729825	14
2608A-B-01	5,12	16002-RI	2	505	14	729827-P	14
2610A	7,12	16061	3	2100	13	729829-P	14
2610A-B	7,12	16102	3	2101	13	U-3605	14
2611A	7	16153	3	2102	13	U-3606	14
2611A-B	7	16202	3	2110A	13	<b>Wiring Devices</b>	
2611A-1-B	5	16001-RI	3	2110A-0	13	150CC.OEM	15
2612A	5	16002-RI	3	2111A	13	150CCTM.OEM	15
2613A	8	16003-RI	3	2111A-0	13	150GCA.OEM	15
2620A	7	28003	11	2111A-0	13	150GCTM.OEM	15
2620A-230-B	7	28005	11	2111A-17	13		
		28008	11				

# GUEST®

## ChargePro Plus Charger System

### Battery Chargers and Voltage Sensitive Relay Modules



36082S

36202S Charger  
with attached  
36012 VSR



ChargePro Plus chargers offer harsh-environment performance plus the convenience of a companion Voltage Sensitive Relay module. This unique system is designed to harness previously unused or wasted alternator power for use by a vehicle's house battery/DC accessory system, for the utmost in charging efficiency and economy. Users can run battery-operated accessories longer and recharge when the alternator is running.

Chargers have **two outputs** – for a cranking battery plus a house battery or two house batteries. The chargers will recognize and provide full amperage on either output as the system requires. They are **fully potted** – for harsh environment protection, and feature Guest's **three-stage electronic switching technology** for maximum reliability, charging efficiency and to protect the load from over-charge. They are also **ignition protected** for safety.

### Chargers

MODEL	TOTAL AMPS	OUT-PUTS	AMPS PER OUTPUT	BATTERY SYSTEM	INPUT VOLTAGE	AC	DC	DIMENSIONS	WT. (LBS)
36082S	8	2	4/4	12/24V	100 - 130 50/60Hz	6' w/ Connect-Charge plug	Studs	6.3" x 6.8" x 3"	6
36202S	20	2	10/10	12/24V	100 - 130 50/60Hz	6' w/ Connect-Charge plug	Studs	8" x 8.9" x 3"	9.5

### Voltage Sensitive Relays (VSR)

MODEL	BATTERY SYSTEM	DC	MAX ALTERNATOR	DIMENSIONS	WT. (LBS)
36012	12V	Studs	70	4.1" x 6.8" x 2.8"	2
36024	24V	Studs	70	4.1" x 6.8" x 2.8"	2



36024



729749-P

### Remote Indicators

- 729749-P Remote indicator for use with Charger Model 36082S
- 16002-RI Remote indicator for use with Charger Model 36202S



# GUEST® Intelligent Charging System (ICS) Chargers

Introducing the most advanced chargers ever developed by Guest: user-friendly, efficient and reliable, while maintaining the Guest heritage of harsh-environment performance.

A membrane-covered Control Center panel, located at the top of each charger for easy access, allows the user to select a battery type per output (AGM/Flooded or Gel). Easy-to-read LEDs provide charge status and alarm indication.

Electronic components are mounted on an anodized aluminum base for efficient heat dissipation and reduced weight. Circuits are coated in epoxy for protection from water or vibration. The charger case features slotted sides to provide convection cooling of the aluminum base plate while maintaining an IP65 Water-Resistance Rating.



## Chargers

MODEL	TOTAL AMPS	OUT-PUTS	AMPS PER OUTPUT	BATTERY SYSTEM	INPUT VOLTAGE	AC	DC	DIMENSIONS	WT. (LBS)
16061	6	1	6	12V	100 - 130 50/60Hz	6' w/ Connect-Charge plug	4' w/ ring terminals	7" x 4.9" x 2.4"	3
16102	12	2	6/6	12V	100 - 130 50/60Hz	6' w/ Connect-Charge plug	4' w/ ring terminals	6.6" x 7.1" x 3.1"	4.5
16153	18	3	6/6/6	12V	100 - 130 50/60Hz	6' w/ Connect-Charge plug	4' w/ ring terminals	9.8" x 7.1" x 3"	6
16202	20	2	10/10	12V	100 - 130 50/60Hz	6' w/ Connect-Charge plug	4' w/ ring terminals	9.8" x 7.1" x 3"	6

## Remote Indicators

- 16001-RI Remote indicator for use with Charger Model 16061
- 16002-RI Remote indicator for use with Charger Model 16102 & 16202
- 16003-RI Remote indicator for use with Charger Model 16153



16001-RI

# GUEST®

## Portable Chargers Single-Battery On-Board Chargers

2606A

2612A

2602A-24-B

2602A-12

2603

A complete line of chargers and maintainers for 12- or 24-volt battery systems. Rugged design and construction for harsh-environment usage.

- Rugged, fully potted
- Electronic switching technology
- Short-circuit protected
- Reverse-polarity protected
- Overload protected
- Complete with AC and DC cables with connectors (see chart)
- Use with flooded, AGM and Gel Cell batteries



Many Guest® brand chargers are available in retail packaging which includes complete features and benefits information for easy consumer selection. (Does not include products marked "bulk pack only.")

## Portable Chargers

MODEL	TOTAL AMPS	OUT-PUTS	AMPS PER OUTPUT	BATTERY SYSTEM	INPUT VOLTAGE	AC	DC	DIMENSIONS	WT. (LBS)	AGENCY LISTING
2606A	6	1	6	12V	100 - 130 50/60Hz	6' cord w/ standard plug	4' w/ battery clips	5.5" x 5" x 2.4"	3.5	UL
2606A-B (bulk)										
2612A	10	1	10	12V	100 - 130 50/60Hz	6' cord w/ standard plug	4' w/ battery clips	7.5" x 5" x 2.4"	4.5	UL



## Single-Battery<sup>†</sup> On-Board Chargers

MODEL	TOTAL AMPS	OUT-PUTS	AMPS PER OUTPUT	BATTERY SYSTEM	INPUT VOLTAGE	AC	DC	DIMENSIONS	WT. (LBS)	AGENCY LISTING
2602A-12	2	1	2	12V	100 - 130 50/60Hz	6' cord w/ Connect- Charge plug	4' w/ ring terminals	2.9" x 5.1" x 1.5"	2	UL
2602A-12-B (bulk)										
2602A-24-B (bulk pack only)	2	1	2	24V	100 - 130 50/60Hz	6' cord w/ Connect- Charge plug	4' w/ ring terminals	2.9" x 5.1" x 1.5"	2	UL
2603 (1)	3	1	3	12V	100 - 130 50/60Hz	18" cord w/ standard plug	4' w/ battery clips	3.1" x 3.5" x 2.3"	1	UL
2603-B (bulk) (1)										
2608A	6	1	6	12V	100 - 130 50/60Hz	6' cord w/ Connect- Charge plug	4' w/ ring terminals	3.5" x 6.4" x 2.3"	4	UL (bulk only)
2608A-B (bulk)										
2608A-B-01 (bulk pack only) (1)	6	1	6	12V	100 - 130 50/60Hz	6' cable w/ molded plug rated -40 to 105C	4' w/ ring terminals rated -40 to 105C	3.5" x 6.4" x 2.3"	4	UL
2611A-1-B (bulk pack only)	10	1	10	12V	100 - 130 50/60Hz	6' cord w/ Connect- Charge plug	4' w/ ring terminals	5.5" x 7.8" x 2.4"	5.6	UL

<sup>†</sup> For single battery or a parallel bank of batteries in 12V DC (1) 2-stage charging



Individual agency listings as shown in product charts.



# GUEST®

## Dual-Battery On-Board Chargers



Dual-battery chargers with single- or double-outputs. Each output is an independent charging system, insuring individual attention to each battery. Pre-wired or hard-wired chargers, to easily incorporate into your product.

- Rugged, fully potted
- Electronic switching technology
- Short-circuit protected
- Reverse-polarity protected
- Overload protected
- Complete with AC and DC cables with connectors (see chart)
- Use with flooded, AGM and Gel Cell batteries
- Independent outputs (see chart)



Available dual-battery chargers include models featuring studs for hardwiring (see chart).

## Dual-Battery On-Board Chargers (Pre-Wired)

MODEL	TOTAL AMPS	OUT-PUTS	AMPS PER OUTPUT	BATTERY SYSTEM	INPUT VOLTAGE	AC	DC	DIMENSIONS	WT. (LBS)	AGENCY LISTING
2602A-24-B (bulk pack only)	2	1	2	24V	100 - 130 50/60Hz	6' cord w/ Connect- Charge plug	4' w/ ring terminals	2.9" x 5.1" x 1.5"	2	UL
2607A	6	2	3/3	12V+12V or 24V	100 - 130 50/60Hz	6' cord w/ Connect- Charge plug	4' w/ ring terminals	3.5" x 6.4" x 2.3"	4	—
2607A-B (bulk)										UL (bulk only)
2611A	10	2	5/5	12V+12V or 24V	100 - 130 50/60Hz	6' cord w/ Connect- Charge plug	4' w/ ring terminals	5.5" x 7.8" x 2.4"	5.6	—
2611A-B (bulk)										UL (bulk only)
2620A	20	2	10/10	12V+12V or 24V	100 - 130 50/60Hz	6' cord w/ Connect- Charge plug	6' w/ ring terminals	7" x 9.6" x 2.6"	8	—
2620A-230-B (bulk pack only)	20	2	10/10	12V+12V or 24V	200 - 250 50/60Hz	6' cord w/ Connect- Charge plug	6' w/ ring terminals	7" x 9.6" x 2.6"	8	CE
2903-1-24 (bulk pack only)	3	1	3	24V	100 - 130 50/60Hz	8" SJT 18-3 w/ female connector shell	6" SJT 18-3 w/ mate-n-lock connector shell	3.5" x 6.5" x 2"	3.5	UL
2605A-1-24 (bulk pack only)	5	1	5	24V	100 - 130 50/60Hz	6" SJT 18-3 w/ female connector shell	4" SJT 18-3 w/ mate-n-lock connector shell	7.4" x 6.3" x 2.4"	4.5	UL
2605A-1-24RT-01 (bulk pack only) (1)	5	1	5	24V	100 - 130 50/60Hz	6' SJT 18-3 w/ Connect- Charge plug	6' SJT 18-3 w/ ring terminals	7.4" x 6.3" x 2.4"	4.5	UL
2620-1-B (bulk pack only)	10	1	10	24V	100 - 130 50/60Hz	6' SJT 18-3 w/ Connect- Charge plug	6' SJT 18-3 w/ ring terminals	6.5" x 9.3" x 2.5"	8	—

## Hard-Wired AC and DC (Studs)

MODEL	TOTAL AMPS	OUT-PUTS	AMPS PER OUTPUT	BATTERY SYSTEM	INPUT VOLTAGE	AC	DC	DIMENSIONS	WT. (LBS)	AGENCY LISTING
2610A	10	2	5/5	12V+12V	100 - 130 50/60Hz	Studs	Studs	5.5" x 7.8" x 2.4"	5.6	—
2610A-B (bulk)										UL (bulk only)
2722-B (bulk pack only)	30	2	15/15	12V+12V or 24V	100 - 130 50/60Hz	Studs	6' w/ ring terminals	6.5" x 12.3" x 2.8"	3.5	—

(1) 2-stage charging



Individual agency listings as shown in product chart.

# GUEST®

## Triple-Battery On-Board Chargers



Guest brand multiple-battery chargers are made to support the unique requirements of multi-task charging, up to 30 amps. Most chargers have multiple outputs. Each output is an independent charging system, insuring individual attention to each battery.

- Waterproof, fully potted
- Electronic switching technology
- Made for outdoor, harsh-environment use
- Short-circuit protected
- Reverse-polarity protected
- Overload protected
- Complete with AC and DC cables with connectors
- Use with flooded, AGM and Gel Cell batteries
- Independent outputs



### Triple-Battery On-Board Chargers

MODEL	TOTAL AMPS	OUT-PUTS	AMPS PER OUTPUT	BATTERY SYSTEM	INPUT VOLTAGE	AC	DC	DIMENSIONS	WT. (LBS)	AGENCY LISTING
2613A	15	3	5/5/5	12V+12V+12V or 24V+12V	100 - 130 50/60Hz	6' cord w/ Connect-Charge plug	4'/4'/6' w/ ring terminals	7" x 9.6" x 2.6"	8	—
2623A	25	3	10/5/10	12V+12V+12V or 24V+12V	100 - 130 50/60Hz	6' cord w/ Connect-Charge plug	6' w/ ring terminals	7" x 13" x 2.6"	13	—
2631A	30	3	10/10/10	12V+12V+12V or 24V+12V or 36V	100 - 130 50/60Hz	6' cord w/ Connect-Charge plug	6' w/ ring terminals	7" x 13" x 2.6"	13	—

# GUEST®

## XD Extreme-Duty Chargers

2632A



2622A-230



Guest Extreme-Duty chargers are designed and built to go the distance in particularly challenging applications. These multi-board chargers are designed for hard-wired installations and are fully potted, waterproof and vibration proof to ensure performance in harsh environment applications.

### XD Extreme-Duty Chargers

MODEL	TOTAL AMPS	OUT-PUTS	AMPS PER OUTPUT	BATTERY SYSTEM	INPUT VOLTAGE	AC	DC	DIMENSIONS	WT. (LBS)	AGENCY LISTING
2622A	20	2	10/10	12V+12V	100 - 130 50/60Hz	Studs	Studs	2.9" x 9.6" x 9.8"	10.8	–
2622A-230	20	2	10/10	12V+12V	200 - 250 50/60Hz	Studs	Studs	2.9" x 9.6" x 9.8"	10.8	CE
2633A	30	2	20/10	12V+12V	100 - 130 50/60Hz	Studs	Studs	2.9" x 13" x 9.8"	15.6	–
2633A-230	30	2	20/10	12V+12V	200 - 250 50/60Hz	Studs	Studs	2.9" x 13" x 9.8"	15.6	CE
2632A	30	3	20/5/5	12V+12V+12V	100 - 130 50/60Hz	Studs	Studs	2.9" x 13" x 9.8"	15.6	–
2632A-230	30	3	20/5/5	12V+12V+12V	200 - 250 50/60Hz	Studs	Studs	2.9" x 13" x 9.8"	15.6	CE

CE Individual agency listings as shown in product chart.

# GUEST® Mobility Chargers



**T**ough, fully automatic chargers meet ANSI-RESNA specifications to provide fast, quiet power for recharging powerchairs and mobility scooters. Portable chargers feature a sleek design and a small footprint for home or institutional use. An inhibit circuit effectively disables the mobility device while charging. On-board models have either low- or high-inhibit circuitry to meet specific OEM requirements.



Input cable has industry-standard 3-pin XLR connector.

- Resists corrosion and bodily fluids
- Electronics are fully encapsulated in epoxy for protection in hostile environments
- Quiet operation, without the buzz of transformer-based chargers
- Built-in electronic overload and thermal protection
- Short-circuit protected
- Reverse-polarity protected
- Meets FCC Class B requirements for radiated and conducted emissions
- Complete with AC & DC cables with connectors (see chart)
- Portable models have standard 3-pin DC XLR connector to fit most mobility devices and IEC connector with power cord
- Use with flooded, AGM and Gel Cell batteries

## Mobility Chargers

### Portable

MODEL	TOTAL AMPS	OUT-PUTS	AMPS PER OUTPUT	BATTERY SYSTEM	INPUT VOLTAGE	AC	DC	DIMENSIONS	WT. (LBS)	AGENCY LISTING
28003	3	1	3	24V	100 - 130 60Hz	IEC Connector w/ 6' adapter included	4' w/ XLR connector	6.6" x 7.3" x 2.7"	3.3	UL
28005	5	1	5	24V	100 - 130 60Hz	IEC Connector w/ 6' adapter included	4' w/ XLR connector	7.2" x 8.3" x 2.7"	4.3	UL
28008	8	1	8	24V	100 - 130 60Hz	IEC Connector w/ 6' adapter included	4' w/ XLR connector	7.8" x 9.5" x 2.9"	6.3	UL

#### Accessory: 2800-1 (DC adapter for 28000 Series chargers)

Adapts the XLR DC connector on Guest Mobility Chargers for use with some E&J brand mobility devices with a positive pin 2 XLR connection.

### On-Board

MODEL	TOTAL AMPS	OUT-PUTS	AMPS PER OUTPUT	BATTERY SYSTEM	INPUT VOLTAGE	AC	DC	DIMENSIONS	WT. (LBS)	AGENCY LISTING
2904-24U	4	1	4	24V <sup>†</sup>	100 - 250 50/60Hz	19" cable w/ AMP female connector and male pins	6" cable w/ AMP mate-n-loc male connector w/ male pins	3.5" x 6.5" x 2.1"	3.5	UL, CE
2904-24LU	4	1	4	24V <sup>††</sup>	100 - 250 50/60Hz	19" cable w/ AMP female connector and male pins	6" cable w/ AMP mate-n-loc male connector w/ male pins	3.5" x 6.5" x 2.1"	3.5	UL, CE

<sup>†</sup> High-inhibit circuitry    <sup>††</sup> Low-inhibit circuitry



Individual agency listings as shown in product chart.



# GUEST® Genset Chargers



Guest chargers are proven performers in genset applications. For specific application information, or if you are developing a new product, be sure to consult with the Guest applications engineering team to ensure the correct charger is specified.

## Genset Chargers

MODEL	TOTAL AMPS	OUT-PUTS	AMPS PER OUTPUT	BATTERY SYSTEM	INPUT VOLTAGE	AC	DC	DIMENSIONS	WT. (LBS)	AGENCY LISTING
2602A-12	2	1	2	12V	100 - 130 50/60Hz	6' w/ Connect- Charge plug	4' w/ ring terminals	2.9" x 5.1" x 1.5"	2	UL
2602A-12-B (bulk)										
2605A-1-24RT-01 (bulk pack only) (1)	5	1	5	24V	100 - 130 50/60Hz	6' SJT 18-3 w/ Connect- Charge plug	6' SJT 18-3 w/ ring terminals	7.4" x 6.3" x 2.4"	4.5	UL
2608A-B-01 (bulk pack only) (1)	6	1	6	12V	100 - 130 50/60Hz	6' cable w/ molded plug rated -40 to 105C	4' w/ ring terminals rated -40 to 105C	3.5" x 6.4" x 2.3"	4	UL
2610A	10	2	5/5	12V+12V	100 - 130 50/60Hz	Studs	Studs	5.5" x 7.8" x 2.4"	5.6	-
2610A-B (bulk)										UL (bulk only)

(1) 2-stage charging



Individual agency listings as shown in product chart.

# GUEST® Battery Switches

Durable, reliable switches that will withstand the rigors of harsh-environment use.

- **Universal Mount** – round styling, for surface or rear mount.
- **Standard Mount** – traditional styling for surface mounting.
- **Heavy Duty** – up to 600 amps continuous operation with intermittent ratings up to 1000 amps (model 2304A).



2110A



2300A

## Universal Mount

MODEL	STYLE	COLOR	DIMENSIONS	AGENCY LISTING	CABLE LUG SIZE	AMPERAGE RATING @		AFD†	TYPE	MOUNTING OPTIONS		
						CONTINUOUS	INTERMITTENT			SURFACE	RECESSED	REAR
2111A	Round	Black	5" D x 2.8" H	UL	3/8"	230	345	No	Selector	Yes	No	Yes
2111A-0	Round	Orange	5" D x 2.8" H	UL	3/8"	230	345	No	Selector	Yes	No	Yes
2111A-17	Round	Red	5" D x 2.8" H	UL	3/8"	230	345	No	Selector	Yes	No	Yes
2110A	Round	Gray	5" D x 2.8" H	UL	3/8"	230	345	Yes	Selector	Yes	No	Yes
2110A-0	Round	Orange	5" D x 2.8" H	UL	3/8"	230	345	Yes	Selector	Yes	No	Yes
2112A	Round	Black	5" D x 2.8" H	UL	3/8"	230	345	No	On/Off	Yes	No	Yes

## Standard Mount

MODEL	STYLE	COLOR	DIMENSIONS	AGENCY LISTING	CABLE LUG SIZE	AMPERAGE RATING @		AFD†	TYPE	MOUNTING OPTIONS		
						CONTINUOUS	INTERMITTENT			SURFACE	RECESSED	REAR
2100	Round	Orange	5.5" W x 2.6"	UL	3/8"	230	345	Yes	Selector	Yes	No	No
2101	Round	Orange	5.5" W x 2.6"	UL	3/8"	230	345	Yes	Selector	Yes	No	No
2102	Round	Orange	5.5" W x 2.6"	UL	3/8"	230	345	Yes	On/Off	Yes	No	No

## Heavy Duty

MODEL	STYLE	COLOR	DIMENSIONS	AGENCY LISTING	CABLE LUG SIZE	AMPERAGE RATING @		AFD†	TYPE	MOUNTING OPTIONS		
						CONTINUOUS	INTERMITTENT			SURFACE	RECESSED	REAR
2300A	Diesel	Gray	5.5" Sq. x 3.5" H	UL	5/8"	360	600	Yes	Selector	Yes	No	No
2303A	Diesel	Gray	5.5" Sq. x 3.5" H	UL	5/8"	450	800	No	On/Off	Yes	No	No
2304A	Diesel	Gray	5.5" Sq. x 3.5" H	UL	5/8"	600	1000	No	On/Off	Yes	No	No

† Alternator Field Disconnect—any position can be selected, including "off," without alternator or electrical system damage.

# Battery Isolators

MODEL	USAGE	MAX OUTPUT PER ALTERNATOR	DIMENSIONS
2501	1 Alternator - 2 Batteries	70A	5.8" x 5" x 3.3"
2504	1 Alternator - 3 Batteries	70A	5.8" x 5" x 3.3"
2530	1 Alternator - 2 Batteries	120A	10" x 5.5" x 3.7"
2502	2 Alternators - 2 Batteries	70A	10" x 5.5" x 3.7"
2503	2 Alternators - 3 Batteries	70A	10" x 5.5" x 3.7"
2532	2 Alternators - 3 Batteries	120A	15" x 5.5" x 3.7"



2501



2503

For 12V and 24V systems. 24V systems must be equipped with 24V DC alternator.

## Beamer™ Remote Control Spotlights

Beamer spotlights from Guest have a powerful halogen beam that illuminates objects up to a mile away. They feature motorized remote-control operation, although the light can be directed manually without damaging its motors. Tough UV-stabilized construction is weather resistant.

- Console, wireless or joystick control
- Dual-station control possible
- 12V or 24V models
- Spot/floodlight models available
- Easily replaceable 100 watt halogen bulb
- Overall dimensions 10-3/8" H x 7-3/8" W x 9-1/4" D



MODEL	DESCRIPTION	CONTROL TYPE	SPOTLIGHT	FLOODLIGHT	VOLTAGE	BASE DIMENSIONS W X D	LAMP DIMENSIONS W X D	WT. (LBS)
500A	Spotlight with pushbutton control	Console	Yes	No	12	5.8" x 6.3"	7.1" x 5.5"	3.8
501A	Wireless spotlight	Wireless	Yes	No	12	5.8" x 6.3"	7.1" x 5.5"	3.8
502A	Spotlight with pushbutton control	Console	Yes	No	12	5.8" x 6.3"	7.1" x 5.5"	3.8
502-1	Spotlight with joystick control	Joystick	Yes	No	12	5.8" x 6.3"	7.1" x 5.5"	3.8
502-2	Spotlight with joystick control	Joystick	Yes	No	24	5.8" x 6.3"	7.1" x 5.5"	3.8
503A	Spot/floodlight with pushbutton control	Console	Yes	Yes	12	5.8" x 6.3"	7.1" x 5.5"	3.8
503-1	Spot/floodlight with joystick control	Joystick	Yes	Yes	12	5.8" x 6.3"	7.1" x 5.5"	3.8
503-2	Spot/floodlight with joystick control	Joystick	Yes	Yes	24	5.8" x 6.3"	7.1" x 5.5"	3.8
505	Xenon wireless spotlight	Wireless	Yes	No	12	5.8" x 6.3"	7.1" x 5.5"	4.2

### Accessories:

729823-P	Control panel for 291C-5 & 500, 500A	729828-P	Dual station control kit for 296-5 & 502, 502A
729825	Transmitter remote for 292C-5 & 501, 501A	729489	Dual station control kit for 296-57-24 & 502-2
729827-P	Control panel for 296-5 & 502, 502A	729830-P	Dual station control kit for 298-5 & 503, 503A
U-3605	Control panel for 296-57 & 502-1	729491	Dual station control kit for 298-57 & 503-1
729489	Control panel for 296-57-24 & 502-2	729492	Dual station control kit for 298-57-24 & 503-2
729829-P	Control panel for 298-5 & 503, 503A	729528	15 ft. Beamer interconnector cable kit
U-3606	Control panel for 298-57 & 503-1	U-3147-P	Replacement bulb kit for 291A, 291C, 292, 292C, 296 & 299
22208-24	Control panel for 298-57-24 & 503-2	U-3336-P	Replacement bulb kit for 298
		729493	Replacement bulb kit for 500, 501, 502, 502-1 & 502-2
		729494	Spot/Flood bulb replacement kit for 503, 503-1 & 503-2



All Beamer spotlights are CE listed.

# GUEST® ConnectCharge™ Inlets



## Installing a Guest Charger Just Got 15 Times Faster

Using ConnectCharge inlets eliminates cutting off the AC plug, purchasing an inlet, and the labor required to wire the AC cord to the inlet. With its patent-pending molded locking tab, the ConnectCharge battery charger plug simply snaps into the locking latch on the back of the ConnectCharge inlet. No extra labor necessary.

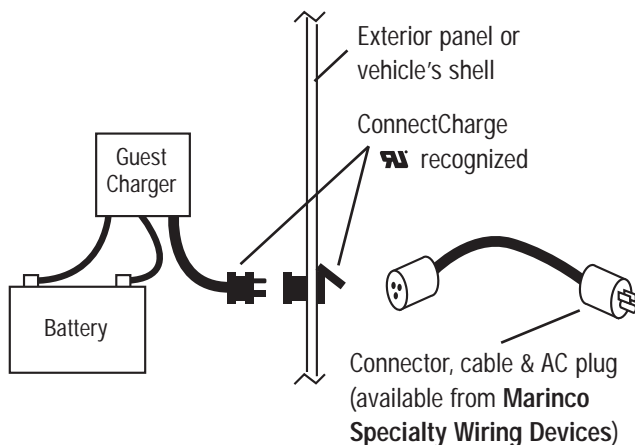
## ConnectCharge Inlet Sleeves

PART NUMBER	DESCRIPTION
150CC.OEM	Inlet Sleeve, front mount, using screws, with PVC flap
150CCTM.OEM	Inlet Sleeve, thread mount with threaded locking ring, with PVC flap
150GCA.OEM	Inlet Sleeve, front mount using screws, with spring-loaded flip lid
150GCTM.OEM	Inlet Sleeve, thread mount with threaded locking ring, with spring-loaded flip lid

Front Mount with  
Spring-Loaded Flip Lid



Thread Mount with  
PVC Flap



# GUEST®

## Charger Specification Guide

Copy this page as needed.  
Please provide as much  
information as possible.

In order to properly match a battery charger to an application, a number of factors that may influence the performance of the charging system must be considered. This is particularly true for OEM applications. Answers to these questions will help in specifying the correct charger.

### Battery Information

Manufacturer: \_\_\_\_\_ Model no.: \_\_\_\_\_ Size (amp hours): \_\_\_\_\_  
No. of batteries: \_\_\_\_\_ Type (choose one): ☐ Flooded ☐ Gel ☐ AGM  
Describe the application: \_\_\_\_\_  
\_\_\_\_\_

### System Information

Battery system (choose one): ☐ 12V DC ☐ 24V DC ☐ 36V DC  
AC input (choose one): ☐ 115V AC ☐ 230V AC ☐ Universal AC  
AC connector (choose one): ☐ Std. US ☐ 230V AC plug ☐ UK ☐ AU ☐ EU ☐ IEC  
☐ Other \_\_\_\_\_ Cord length (6-ft. is standard): \_\_\_\_\_  
DC connector: ☐ Ring terminals ☐ Alligator clips  
Special connector required (part no.): \_\_\_\_\_ DC cord length (6-ft. is standard): \_\_\_\_\_  
Desired recharge time (hours): \_\_\_\_\_ Temperature range for the application: - \_\_\_\_\_°C to + \_\_\_\_\_°C  
Are there any electrical loads on the battery while the charger is turned on? ☐ Yes ☐ No  
If yes, describe the load (control panel etc.) and max. amperage draw: \_\_\_\_\_  
\_\_\_\_\_

Specific voltage requirements (if not standard chemistry): Bulk \_\_\_\_\_ Absorption \_\_\_\_\_ Float \_\_\_\_\_  
Choose one: ☐ On-board application ☐ Portable ("off-board") application  
Is there a written specification for the charger? ☐ Yes ☐ No  
Are there size constraints for the mounting area? ☐ Yes ☐ No  
If yes, dimensions of mounting surface available: L \_\_\_\_\_ x W \_\_\_\_\_ x H \_\_\_\_\_  
Inhibit circuit required? ☐ Yes ☐ No  
If yes, controller manufacturer and model no.: \_\_\_\_\_  
Type: ☐ high ☐ low ☐ open

### Existing System (if appropriate)

Current charger being used: Manufacturer: \_\_\_\_\_ Model no.: \_\_\_\_\_  
Issues or Concerns: \_\_\_\_\_  
\_\_\_\_\_