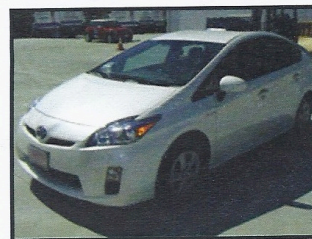


Clazzio

EAT0B2301



TOYOTA PRIUS

INSTRUCTIONS

Thank you for purchasing a Clazzio seat cover kit.
This manual provides useful information about installation,
use, and warranties. Please read carefully.

Check the seat cover package identification.

Each seat cover kit is customized to fit the seats in a particular make, model year and style
of car. Please make sure that the car identification information on the package matches
with the car in which the seat cover is to be installed.

INSTALLATION MANUAL

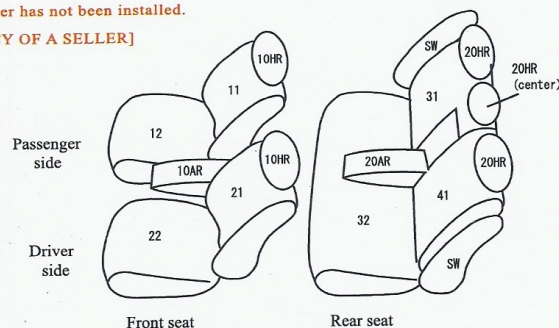
Check the contents of this package.

When you unpack the seat cover kit make sure that all parts are included. The tag numbers
attached to the covers correspond to the numbers indicated on the diagram below.

If there is any problem with the kit, please contact the seller from whom you purchased it.
[Refunds or exchanges are limited to those made within one week of purchase, provided
that you present satisfactory proof of purchase and the seat cover has not been installed.
NOT ADVISABLE TO SET REFUND OR EXCHANGE POLICY OF A SELLER]

For your records, please note

Package Serial Number: _____
Package Identification: _____
(i.e., automobile make, model year, style, etc.)
Date Purchased: _____
Vendor's Name: _____
Purchase Price: _____



S-hook=6 pieces
(6 of them are used.)

General Installation Instruction:

1. Follow the numbered installation procedure.
2. The seat cover is designed to fit snugly over the seat. Do not put too much tension on one spot or one side when installing the cover. This applies especially when installing the headrest cover where the holes are located.
3. Be careful not to break the accessories attached to the seat during the installation.
4. Be careful not to hurt yourself by touching sharp metal or plastic parts of the seat or its surroundings during the installation.

Before installation, park your car in a spacious flat area. If the installation instructions are properly followed, it should take about two (2) hours to install the seat covers. Please make sure all electrical devices are turned off to prevent unnecessary drain on the car battery.



ELEVEN INTERNATIONAL USA INC.

2675 Skypark Drive Suite103 Torrance CA 90505
TEL 310-326-3456 / FAX 310-326-4567
Website: <http://www.11i-usa.com> E-mail: info@11i-usa.com

- WARNING -

As soon as you receive the product, read the instruction carefully and confirm that every parts is included in the box before you install it. Every parts of the product has a tag which shows what parts it is. If you find any problem at this point, please contact the one you directly purchased. After the installation, no refund nor exchange is acceptable.

If customers make a wrong order, refund or exchange is possible within one week after the arrival of the product.

It has been proved that the thread is split by the side impact airbag when it deploys. However, this shows that the thread is split and does not always guarantee that it deploys.

The ink of jeans or newspaper may remain on the surface of the material if they are placed for a long time.

Under the direct sun light for a long time, the color or appearance of the surface may change. High temperature and high humidity may cause mold and shrinking of material.

Because this products is made from oil, it may smell. Usually one or two weeks after the installation, the smell will disappear, but in case it still smells, place it in the ventilated area for a while. The product contains vinyl chloride, so when it is burnt, it emits chloride hydrogen. When you dispose it, follow the proper procedure.

If the product gets stain, scratch or is torn, you can make order for the parts you need. However, the color of the material may slightly be different even if it is the same color depending on how long the product is used or when the material is made.

This seat cover is very tight to fit to the original seat. Be careful not to put too much tension on one spot, especially for the headrest hole part, otherwise it may be torn.

Be careful not to break the accessories of original seat during the installation.

Be careful not to hurt yourself by touching the metal or plastic part of original seat during the installation.

You are advised to follow the procedure in the instruction to make the installation easy. For installation, park your car in the large and flat space and make sure all the electricity are turned off so that the battery won't go dead.

-WARNING-

The bottom seat of the front seat



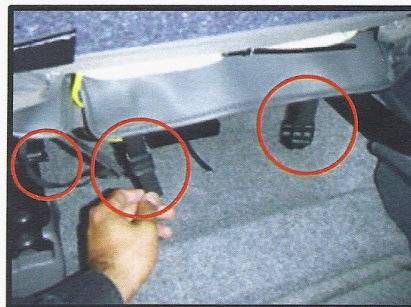
- ① Before putting the cover for the bottom, take off the circle parts on the back side.



- ④ Insert the cover into the plastic part.



- ② Put the cover following the original seat.



- ⑤ Pull the belt of the front side toward the back side and fix with the plastic of the other side. Attach the S-hook to the rubber on the back side and hang it up on the suitable place.



- ③ Insert the cover between the back and bottom, and pull it from the rear seat.



- ⑥ Make the surface smooth and finish.

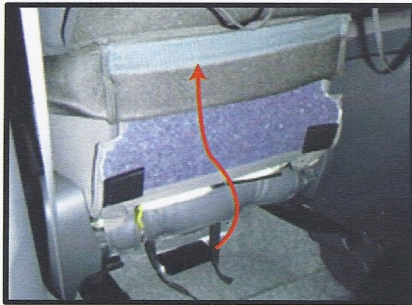
The back of the front seat



- ① Roll up the cover for the back half way before the installation.
Fit the cover on the shoulder part tightly.



- ④ Insert the cover between the back and the bottom seat.



- ② Insert the original part into the cover.



- ⑤ Make the surface smooth, rub the cover following the arrow in the picture from ① to ③.
By repeating this procedure, the cover will fit tightly.



- ③ Insert the cover under the plastic part, as it comes out of the hole.



- ⑥ Fix the cover with the Velcro.

A continuance of the back of the front seat

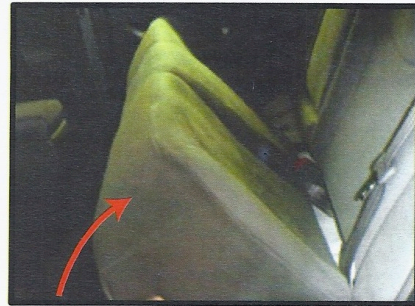


- ⑦ Attach the S-hook to the rubber on the back side and hang it up on the suitable place.

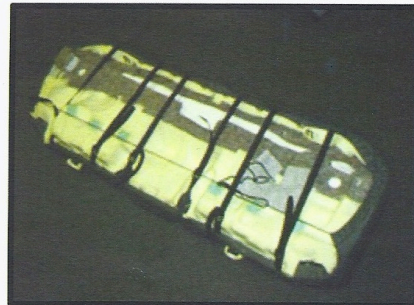


- ⑧ Make the surface smooth and finish.

The bottom seat of the rear seat



- ① Take off the bottom seat of the rear seat, lift up the front side. While removing the bottom, be careful not to damage the body.



- ② On the back side of the bottom, fix the string of right and left side, also fix the belt of front and back side.



- ③ Make the surface smooth and finish. Install it to the car after covering the back.

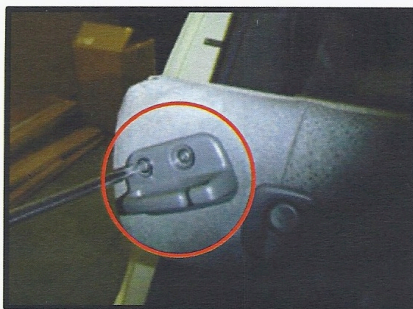
The back of the rear seat



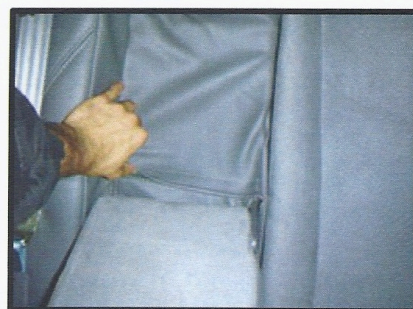
① Take off the seat belt first.



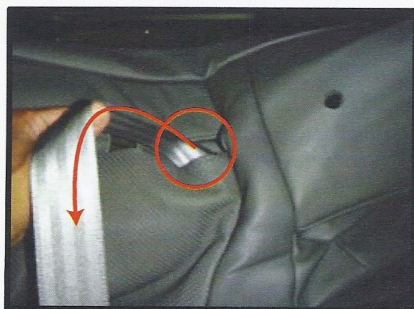
④ Insert the cover between the back and the armrest.



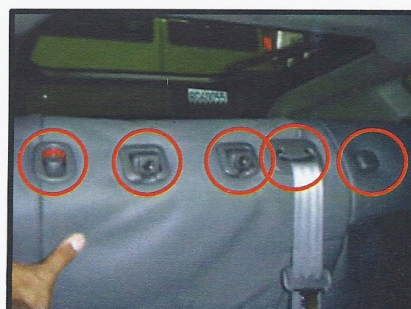
② Take off the seat belt holder.



⑤ Fix the Velcro.



③ Put the seat belt buckle through the cover and fix with bolt.

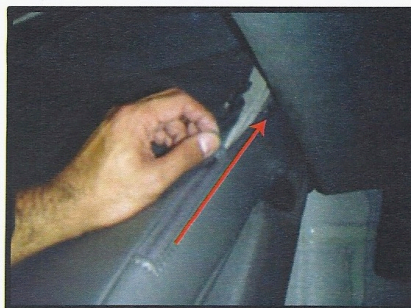


⑥ Insert the cover under the plastic parts, as they come out of the holes.

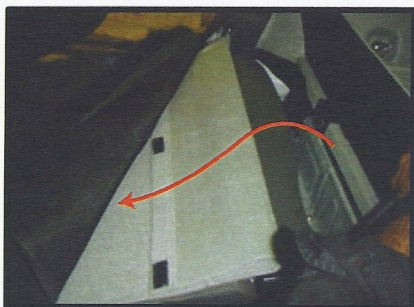
A continuance of the back of the rear seat



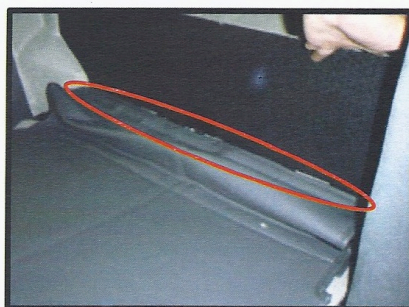
⑦ Insert the Velcro between the back and the bottom seat.



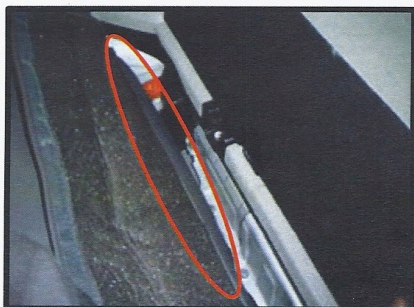
⑩ Close the zipper.



⑧ Insert the original part into the cover.



⑪ Fix the Velcro.



⑨ Fix the Velcro.



⑫ Make the surface smooth and finish.

The headrest




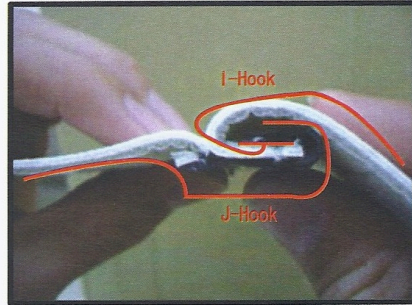
① Put the cover on the headrest after confirming the front and back side.



④ Fix the plastic hook.



② Pull down the cover for both side. Be careful not to tear the  part.



⑤ Fold the I-hook with the material and insert it into the J-hook.



③ Remove the headrest.



⑥ Make the surface smooth and finish.

The armrest

Front



① Put the cover following the armrest.



② Hook the rubber on the back side.



③ Make the surface smooth and finish.

Rear



④ Put the cover following the armrest.

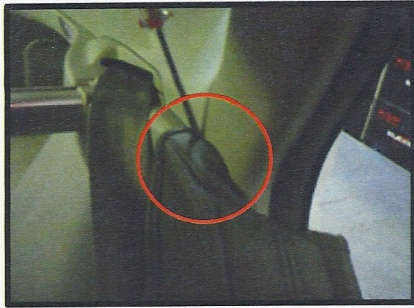


⑤ Fix the Velcro.



⑥ Insert the cover into the plastic part.
Make the surface smooth and finish.

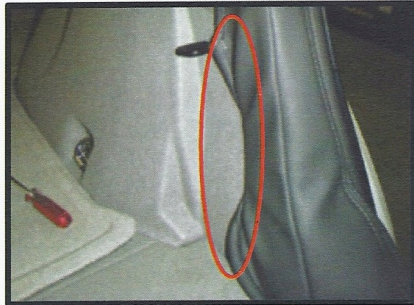
The sidewing of the rear seat



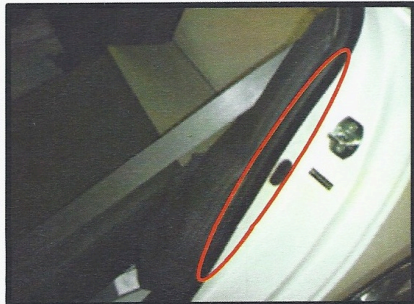
① Insert the cover between the sidewing part and the body.



④ Make the surface smooth and finish.



② Inset the cover between the sidewing part and luggage.



③ Insert the cover between the sidewing part and door.



Front



Rear

- LIMITED WARRANTY -

ELEVEN INTERNATIONAL USA INC. ("ELEVEN") warrants this product against material defects in materials and workmanship for a period of one year from the date of original retail purchase ("warranty period"). Warranty work will be done in accordance with the following terms and conditions.

A. Your responsibilities:

To qualify for warranty repair or replacement, you must comply with all of the following:

1. You must return the product, during the warranty period, with transportation and insurance charges prepaid, to:

2675 Skypark Dr., Suite #103
Torrance, CA 90505
Tel: (310) 326-3456
Fax: (310) 326-4567
www.11i-usa.com

2. When returning the product, attach your name, address, work day telephone number, a description of the problem and a copy of your dated receipt, invoice, bill of sale or other similar document which contains the serial number of the returned product and the date of original retail purchase. No warranty work will be done without this information.

3. Properly pack the product (preferably in the original carton) so as to prevent damage to the product in transit. You may choose to insure the product but this is not required.

B. Instances where there is no warranty protection:

The exceptions and exclusions from this warranty are as follows:

1. This warranty extends only to you, the original purchaser. It is not transferable to anyone who subsequently purchases this product from you.
2. This warranty does not apply if the product has been damaged or rendered defective as a result of any Act of God, accident, abuse, external causes or events, misuse, improper installation, neglect or misapplication, unauthorized alteration or modification, has not been properly maintained, been subjected to excessive heat, cold or moisture, and scuffs, scratches, tears and abusive or excessive wear are excluded. Silicone based products or harsh chemicals may harm the surface of your leather interior, consequently use of these products will void this warranty.
3. Should ELEVEN determine that the product is not defective, is not covered by the warranty or is outside of the warranty term, ELEVEN shall return the product to you, at your expense, without being repaired or replaced.

C. Other terms and conditions:

1. Any product which has been repaired or replaced under this warranty shall be covered for the remainder of the original warranty as extended by the number of days that the product has been out of your hands for repair.

2. ALL IMPLIED WARRANTIES, INCLUDING IMPLIED WARRANTIES OF MERCHANTABILITY AND FITNESS FOR A PARTICULAR PURPOSE, ARE LIMITED IN DURATION TO THE WARRANTY.

3. NEITHER ELEVEN NOR ITS AFFILIATES ARE RESPONSIBLE OR LIABLE FOR ANY LOSS, INCONVENIENCE OR DAMAGE, WHETHER SPECIAL, EXEMPLARY, DIRECT, INCIDENTAL, CONSEQUENTIAL OR OTHERWISE, AND WHETHER KNOWN OR SHOULD HAVE BEEN KNOWN TO ELEVEN, INCLUDING LOST PROFITS, GOODWILL, DAMAGE TO OR REPLACEMENT OF OTHER EQUIPMENT AND PROPERTY AND PERSONAL INJURY RESULTING FROM ANY BREACH OF WARRANTY, THE INABILITY TO USE THE PRODUCT OR UNDER ANY LEGAL THEORY IN CONTRACT OR TORT. THESE WARRANTIES AND REMEDIES ARE THE SOLE AND EXCLUSIVE WARRANTIES AND REMEDIES GIVEN BY ELEVEN IN CONNECTION WITH THE SALE AND USE OF THE PRODUCT. NO OTHER WARRANTIES, ORAL OR WRITTEN, EXPRESS OR IMPLIED, ARE GIVEN.

4. IN ANY EVENT, ELEVEN'S ENTIRE LIABILITY SHALL BE LIMITED TO THE ACTUAL PURCHASE PRICE YOU PAID TO THE RETAIL SELLER OF THE DEFECTIVE PRODUCT. THIS LIMITATION APPLIES WHETHER DAMAGES ARE SOUGHT OR A CLAIM MADE, UNDER THIS WARRANTY OR AS A TORT CLAIM (INCLUDING NEGLIGENCE AND STRICT PRODUCT LIABILITY), A CONTRACT CLAIM OR ANY OTHER CLAIM. THIS LIMITATION CANNOT BE WAIVED OR AMENDED BY ANY PERSON. THIS LIMITATION OF LIABILITY IS EFFECTIVE EVEN IF ELEVEN OR ANY AUTHORIZED REPRESENTATIVE OF ELEVEN HAS BEEN ADVISED BY YOU OF THE POSSIBILITY OF SUCH DAMAGES. THIS LIMITATION OF LIABILITY, HOWEVER, SHALL NOT APPLY TO CLAIMS OF PERSONAL INJURY.

5. Some states do not allow the exclusion or limitation of implied warranties or liability for incidental or consequential damages, or do not allow a limitation on how long an implied warranty lasts, so the above limitations or exclusions may not apply to you. You are advised to contact applicable state laws for a full determination of your rights. This warranty gives you specific legal rights, and you may have other rights which vary from state to state.

6. No ELEVEN dealer, agent or employee is authorized to make any modification, extension, change or amendment to this warranty.

-LIMITED WARRANTY-