

FIGURE 2. Reconstructed annual mean Antarctic temperature anomalies, January 1957 to December 2006.

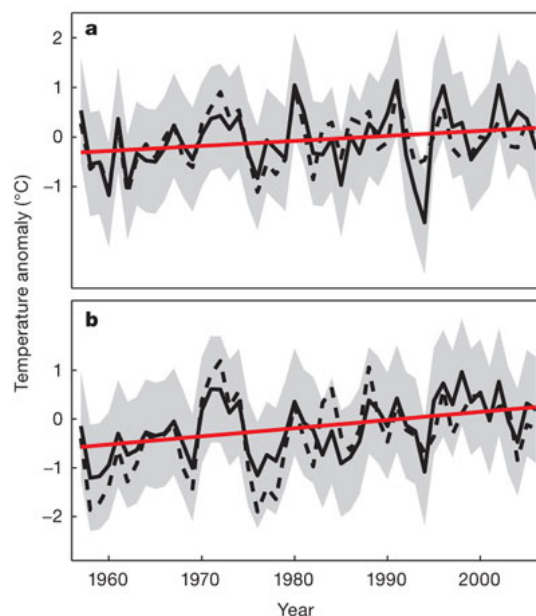
From the following article:

[Warming of the Antarctic ice-sheet surface since the 1957 International Geophysical Year](#)

Eric J. Steig, David P. Schneider, Scott D. Rutherford, Michael E. Mann, Josefino C. Comiso & Drew T. Shindell

Nature **457**, 459–462 (22 January 2008)

doi:10.1038/nature07669



a, East Antarctica; **b**, West Antarctica. Solid black lines show results from reconstruction using infrared satellite data, averaged over all grid points for each region. Dashed lines show the average of reconstructed AWS data in each region. Straight red lines show average trends of the T_{IR} reconstruction. Verification results for the continental mean of the T_{IR} reconstruction are $RE = 0.34$, $CE = 0.31$ and $r = 0.73$. Grey shading, 95% confidence limits.

Download file

If the slide opens in your browser, select "File > Save As" to save it.

[Download PowerPoint slide \(508K\)](#)

Slides may be downloaded for educational use, according to the terms described in [Nature Publishing Group's licensing policy](#).

Nature ISSN 0028-0836 EISSN 1476-4687

About NPG
Contact NPG
RSS web feeds
Help

Privacy policy
Legal notice
Accessibility statement

Nature News
Naturejobs
Nature Asia
Nature Education

Search:

© 2009 Nature Publishing Group, a division of Macmillan Publishers Limited. All Rights Reserved.
partner of AGORA, HINARI, OARE, INASP, CrossRef and COUNTER