

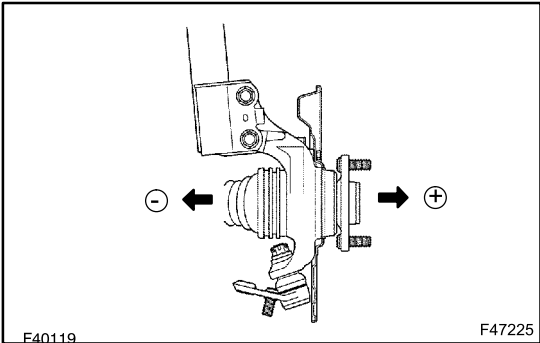
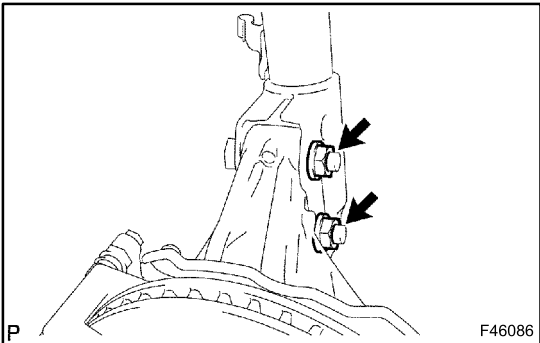
If the caster and steering axis inclination are not within the specified values, after the camber has been correctly adjusted, re-check the suspension parts for damaged and/or worn out parts.

7. ADJUST CAMBER

NOTICE:

Inspect toe-in after the camber has been adjusted.

- (a) Remove the front wheel.
- (b) Remove the 2 nuts on the lower side of the shock absorber.
- (c) Clean the installation surfaces of the shock absorber and the steering knuckle.
- (d) Temporarily install the 2 nuts.



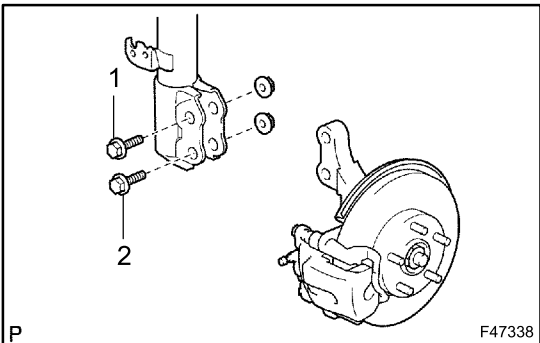
- (e) Fully push or pull the front axle hub in the direction of the required adjustment.
- (f) Tighten the nuts.  
**Torque: 153 N·m (1,560 kgf·cm, 113 ft·lbf)**

NOTICE:

Keep the bolts from rotating and torque the nuts.

- (g) Install the front wheel.  
**Torque: 103 N·m (1,050 kgf·cm, 76 ft·lbf)**

- (h) Check the camber.  
If the measured value is not within the specified range, calculate the required adjustment amount using the formula below.  
**(Camber adjustment amount) = Center of the specified range - Measured value**



Check installed bolts combination. Select appropriate bolts from the table below to adjust the camber to within the specified range.

Move the axle toward (+) in step (e)	Refer to table (1) (Move the axle toward positive side)
Move the axle toward (-) in step (e)	Refer to table (2) (Move the axle toward negative side)

This document was created with Win2PDF available at <http://www.win2pdf.com>.  
The unregistered version of Win2PDF is for evaluation or non-commercial use only.  
This page will not be added after purchasing Win2PDF.