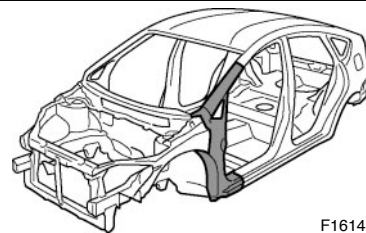


FRONT BODY PILLAR (CUT)

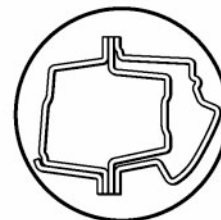
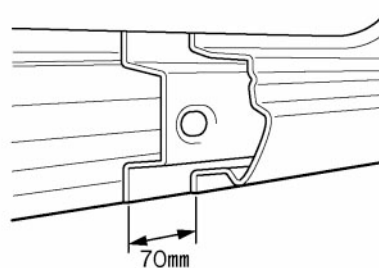
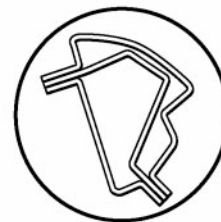
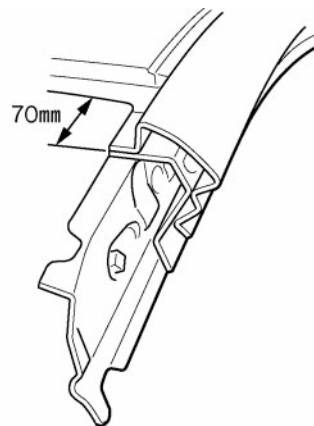
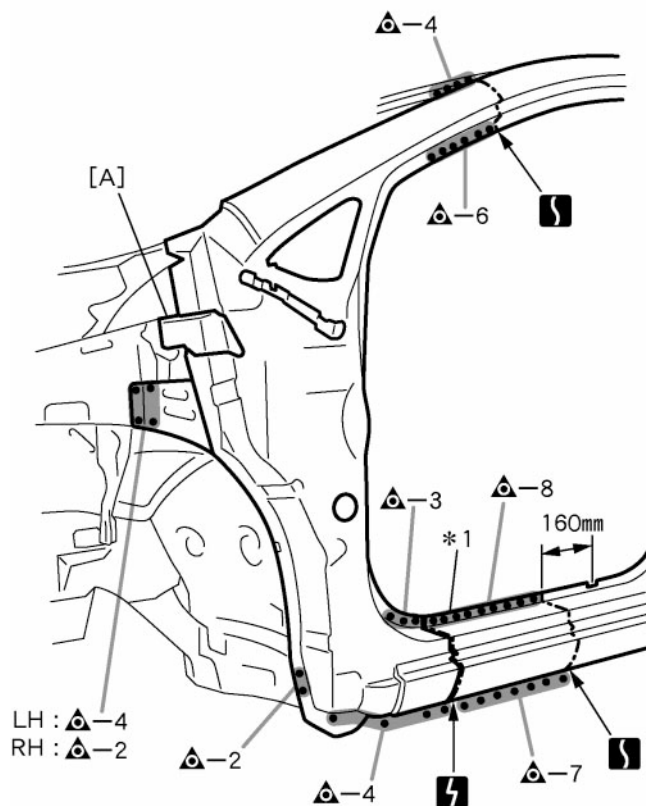
REPLACEMENT

With the cowl top side panel and cowl top inner side panel removed.



F16148A

REMOVAL



F16148

POINT

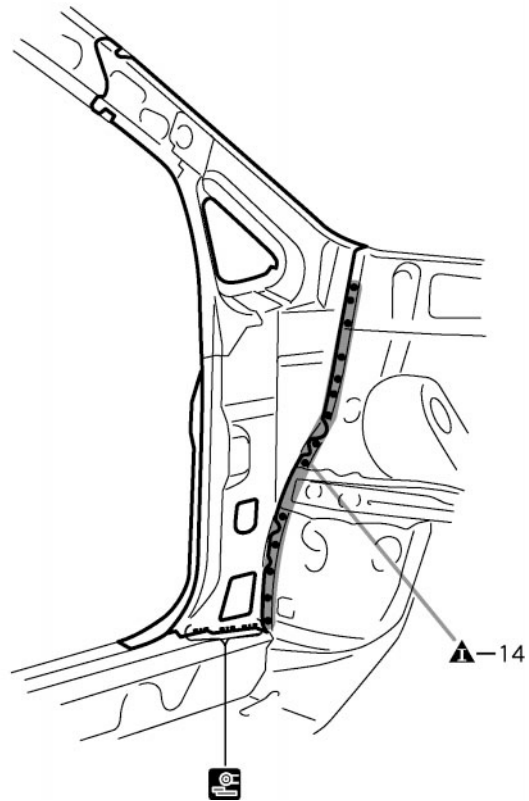
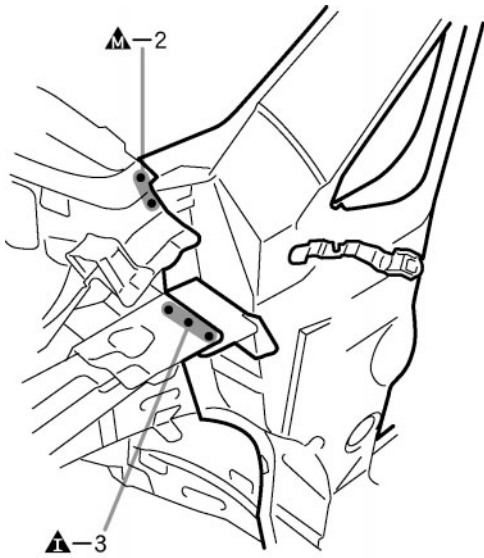
- 1 *1 : This part of the outer panel is reused, because the rocker panel section is cut off at the rear position behind the supplied parts cut position of the outer panel.
- 2 Replace the [A] at the same time.

PART NAME

[A] Cowl Top Side Reinforcement

70mm (2.76in.)

160mm (6.30in.)



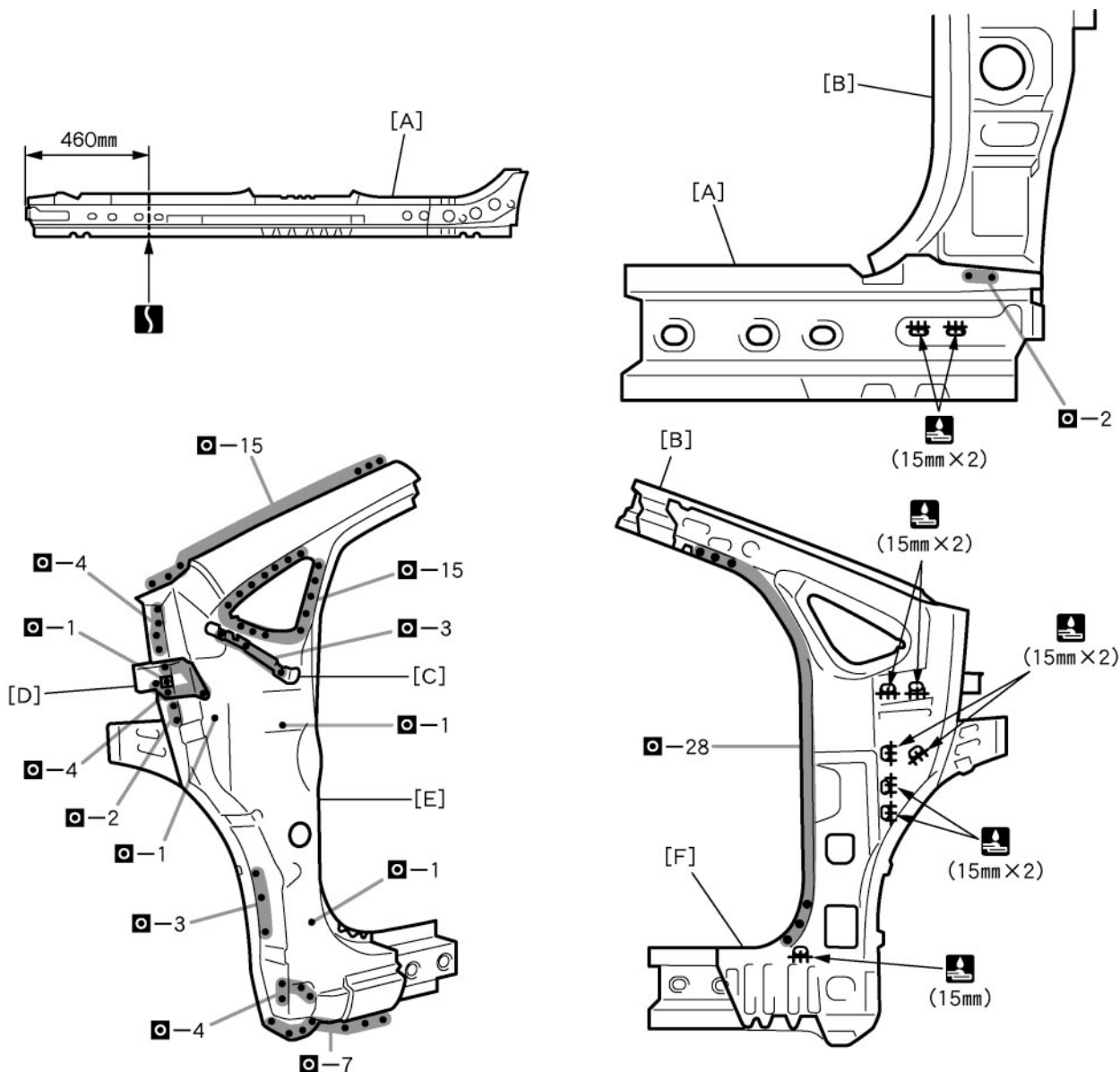
F16149

POINT

- 1 Remove the remaining foamed from the vehicles side.

INSTALLATION

- Temporarily install the new parts and measure each part of the new parts in accordance with the body dimension diagram. (See the body dimension diagram)
- Inspect the fitting of the related parts around the new parts before welding. This affects the appearance of the finish.
- After welding, apply the polyurethane foam to the corresponding parts.
- After welding, apply body sealer and under-coating to the corresponding parts.
- After applying the top coat layer, apply anti-rust agent to the inside of the necked section structural weld spots.



F16150

POINT

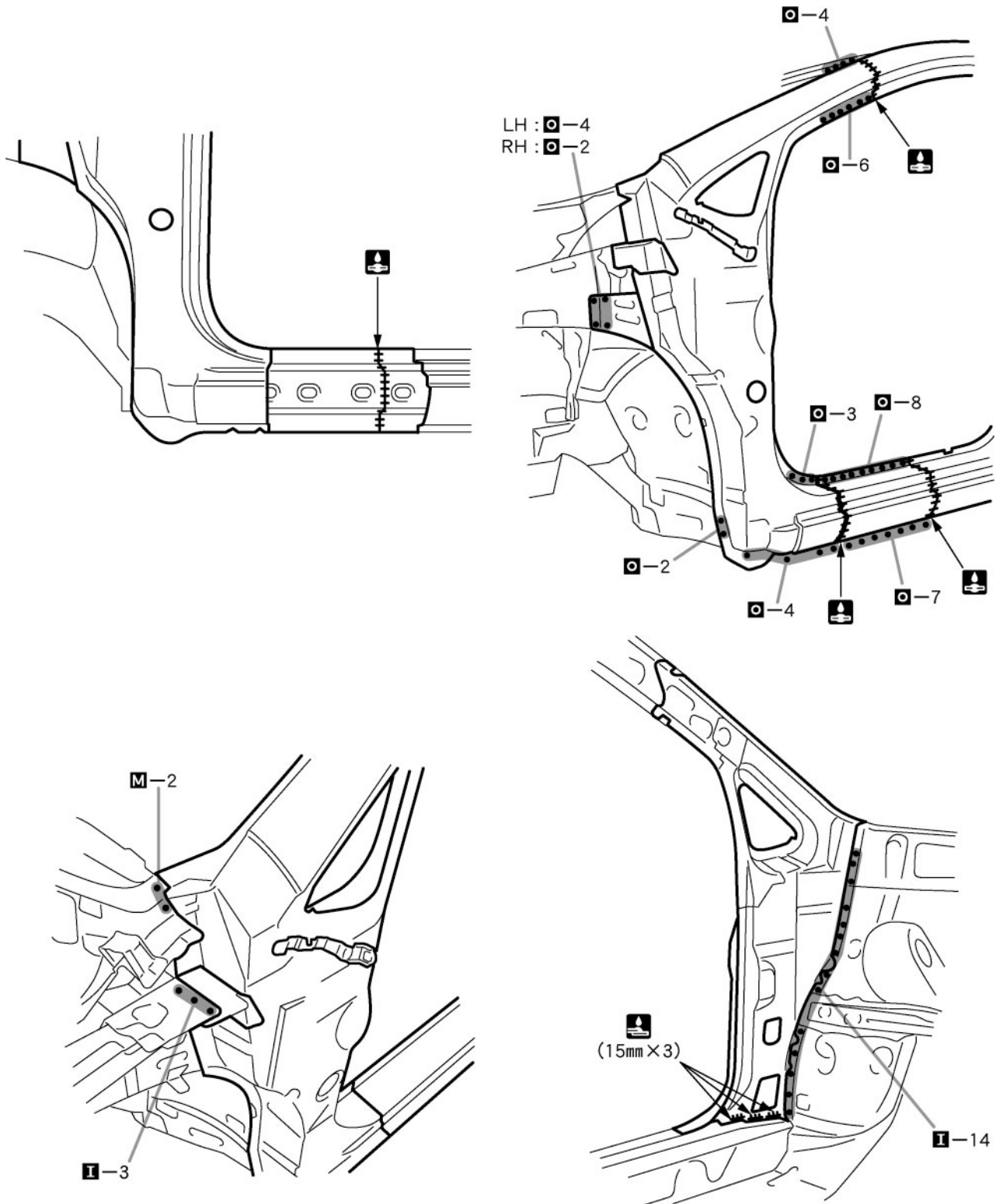
- 1 Before temporarily installing the new parts, weld the [A], [B], [C], [D], [E], and [F] with standard points.

PART NAME

- | | |
|-------------------------------------|---|
| [A] Rocker Outer Reinforcement | [B] Front Body Pillar Lower Reinforcement |
| [C] Front Fender Rear No. 2 Bracket | [D] Cowl Top Side Reinforcement |
| [F] Front Body Upper Inner Pillar | [E] Outer Pillar |

460mm (18.11in.)

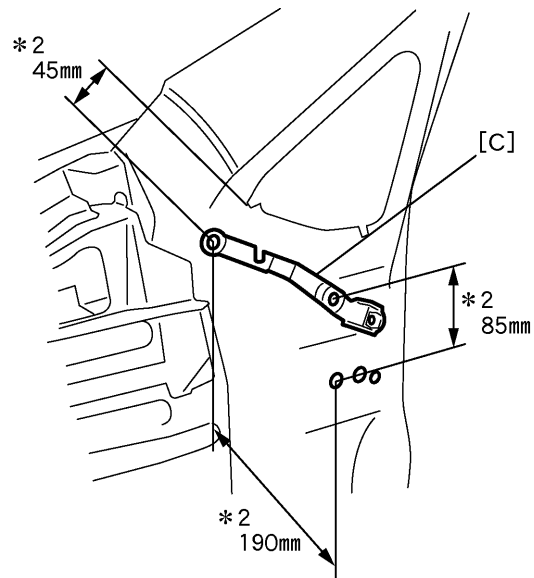
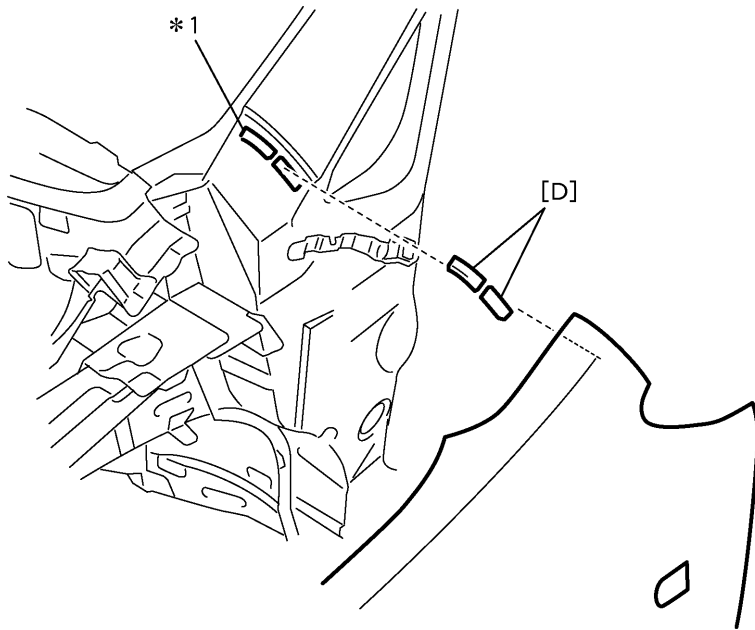
15mm (0.59in.)



F16151

POINT

- 1 Inspect the fitting of the front door, front fender and windshield glass, etc., before welding, since this affects the appearance of the finish.

**POINT**

- 1 *1: Area where [D] is to be installed. *2: Reference value
- 2 Place the front fender. For installation of [D], measure the distance between the front fender and *1. Select a thickness of [D] from 7mm, 7.5mm and 8mm.
- 3 Fit the front fender, pushing down the attached [D], and checking that it does not rattle.

HINT:

- 1) If having wobbles, change the [D] to the thicker one. Also, check the alignment of the front fender again.

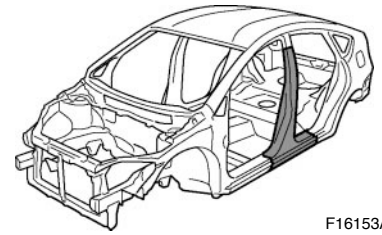
PART NAME

[C] Front Fender Rear No.2 Bracket [D] Front Fender Spacer

7mm (0.28in.) 7.5mm (0.30in.) 8mm (0.31in.) 45mm (1.77in.) 85mm (3.35in.) 190mm (7.48in.)

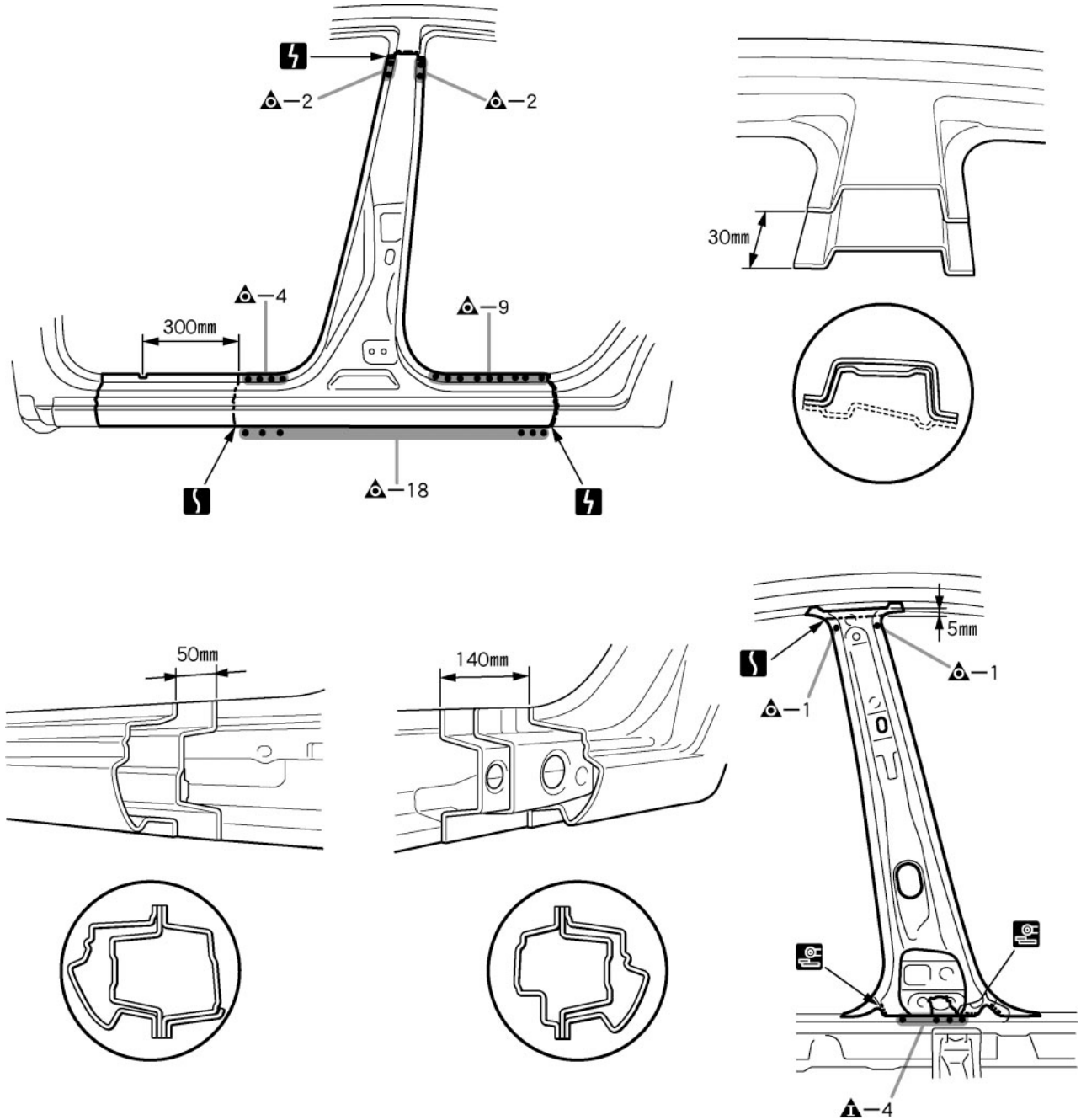
CENTER BODY PILLAR (CUT)

REPLACEMENT



F16153A

REMOVAL



F16153

5mm (0.20in.) 30mm (1.18in.) 50mm (1.97in.) 140mm (5.51in.) 300mm (11.81in.)