

2010 Toyota Prius V Sedan

SPECIAL CAUTIONS

TOYOTA HYBRID SYSTEM

The Prius is powered by both electricity and gasoline.

This model requires special cautionary procedures that must be followed when performing service or repair. See Toyota Prius Emergency Response Guide for service and safety information.

SUPPLEMENTAL RESTRAINT SYSTEM

Refer to Procedure Explanation 29 for Supplemental Restraint/Air Bag Special Cautions.

WELDING

Before initiating any repair involving the use of an electric welder, the ignition must be in the off position and both battery terminals as well as ABS Control Unit disconnected.

2010 Toyota Prius V Sedan

PAINT CODE LOCATION

Paint code located on left front door lock pillar.

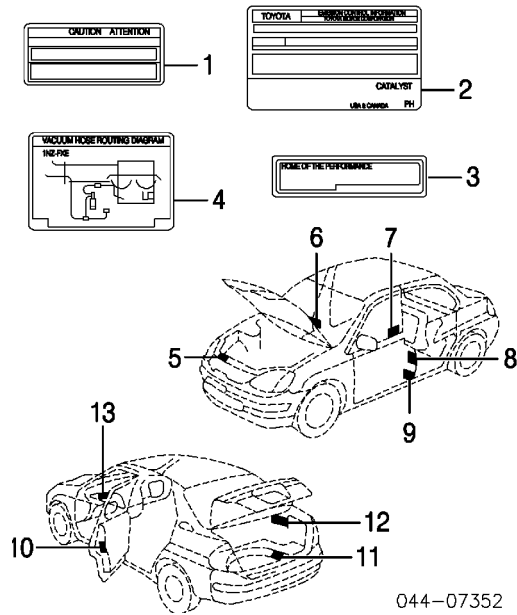
2010 Toyota Prius V Sedan

CLEAR COAT IDENTIFICATION

All colors are clear coat. White Pearl (Code 070) is three stage.

2010 Toyota Prius V Sedan

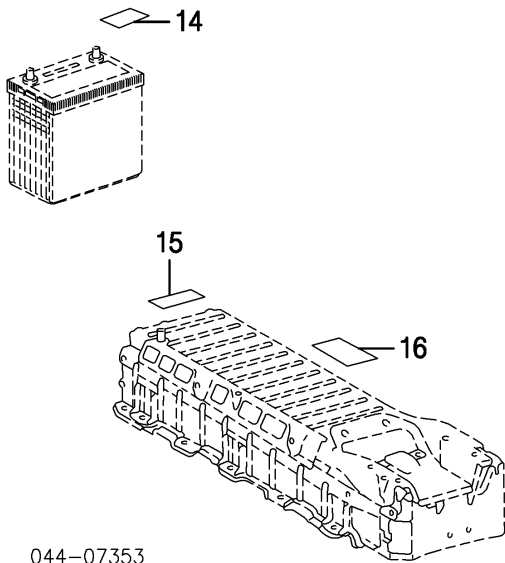
INFORMATION LABELS



044-07352

1	Plate, Engine Caution		11293-21080	\$1.00
2	Plate, Emission Information		11298-37140	\$1.89
3	Plate, Emission Control		11282-21010	\$1.89
4	Plate, Vacuum Hose		N.A.	
	Label, Cooling Fan Caution		16793-0V010	\$1.37
	Label, A/C Filter		87529-0E010	\$2.17
	Label, Cooler Service Caution		88723-47090	\$6.29
5	Label, Battery Caution		G9275-47030	\$4.00
6	Plate, Tire Pressure Caution		42661-47170	\$2.17
7	Plate, Theft Warning	R	N.A.	
8	Label, Side Air Bag Caution	R	74596-53010	\$3.97
		L	74596-53010	\$3.97
	Label, Air Bag Information		74599-48020	\$6.00
9	Label, Identification		74514-33010	\$1.43
10	Label, Child Proof Caution	R	69339-12010	\$1.00
		L	69339-12010	\$1.00
11	Plate, Spare Tire Caution		42668-02030	\$3.00
12	Plate, Fuel Caution		N.A.	
13	Label, Push Start Info		N.A.	

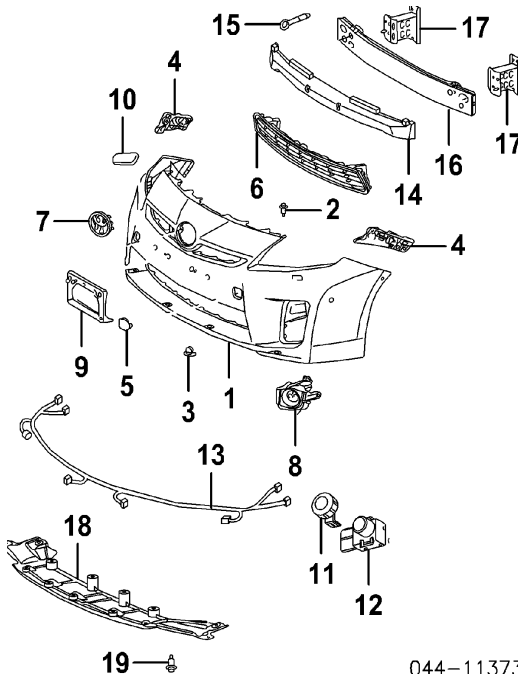
2010 Toyota Prius V Sedan



044-07353		
14 Label, Battery Information	28898-26010	\$1.89
15 Label, Charging Information	G9279-47040	\$4.00
16 Label, Charging Notice	G9288-47080	\$4.00
Label, Coolant Caution	11285-37040	\$3.17

FRONT BUMPER

Procedures 1 and 28



044-11373

Refinish Front Cover		2.8
Refinish Tow Hook Cover	R	.2
	L	.2
R&I Front Cover		#1.0

#Includes R&R Upper Cover

O/H Front Cover (Includes R&I)	#2.4
--------------------------------	------

#Includes R&R Grille

NOTE: All Parts in this section are included in overhaul unless noted otherwise.

1 Cover, Front (P)			
Halogen H/Lamps	#2.4	52119-47917	\$239.98
LED H/Lamps			
w/Pre-Collision System	#2.4	52119-47920	\$239.98
w/o Pre-Collision System	#2.4	52119-47919	\$239.98
(P) Paint to Match			
#Includes R&R Grille			
2 Clip, Cover (5)		52161-02020	\$2.14
3 Grommet, Cover (4)		90189-06193	\$0.83
4 Support, Bumper	R	52115-47020	\$40.58
	L	52116-47020	\$40.58
5 Cover, Tow Hook (P)	R	52127-47900	\$7.95

2010 Toyota Prius V Sedan

	L		52128-47900	\$7.95
(P) Paint to Match				
6 Grille, Lower		.3	53112-47040	\$65.48
7 Emblem, Grille				
w/Pre-Collision System		.2	53141-47011	\$874.54
w/o Pre-Collision System		.2	75310-47010	\$46.53
8 Cover, Fog Lamp				
w/Pre-Collision System	R	.2	81481-47020	\$46.18
	L	.2	81482-47020	\$46.18
w/o Pre-Collision System	R	.2	81481-47010	\$40.93
	L	.2	81482-47010	\$40.93
9 Bracket, License Plate		.2	52114-47070	\$65.08
10 Nozzle, H/Lamp Washer-See Front Lamps Section				
11 Retainer, Sensor				
Beige, (Code 4T8)	R	#.2	89348-12010-E3	\$26.52
	L	#.2	89348-12010-E3	\$26.52
Black, (Code 202)	R	#.2	89348-12010-C1	\$26.52
	L	#.2	89348-12010-C1	\$26.52
Dark Blue, (Code 8T5)	R	#.2	89348-12010-J3	\$26.52
	L	#.2	89348-12010-J3	\$26.52
Gray, (Code 8V1)	R	#.2	89348-12010-J5	\$26.52
	L	#.2	89348-12010-J5	\$26.52
Red, (Code 3R3)	R	#.2	89348-12010-D0	\$26.52
	L	#.2	89348-12010-D0	\$26.52
Silver, (Code 1F7)	R	#.2	89348-12010-B0	\$26.52
	L	#.2	89348-12010-B0	\$26.52
White, (Code 070)	R	#.2	89348-12010-A1	\$26.52
	L	#.2	89348-12010-A1	\$26.52
12 Sensor, Ultrasonic				
Beige, (Code 4T8)	R	#.2	89341-28480-E1	\$203.23
	L	#.2	89341-28480-E1	\$203.23
Black, (Code 202)	R	#.2	89341-28480-C0	\$203.23
	L	#.2	89341-28480-C0	\$203.23
Dark Blue, (Code 8T5)	R	#.2	89341-28480-J2	\$203.23
	L	#.2	89341-28480-J2	\$203.23
Gray, (Code 8V1)	R	#.2	89341-28480-J4	\$203.23
	L	#.2	89341-28480-J4	\$203.23
Red, (Code 3R3)	R	#.2	89341-28480-D1	\$203.23
	L	#.2	89341-28480-D1	\$203.23
Silver, (Code 1F7)	R	#.2	89341-28480-B1	\$203.23
	L	#.2	89341-28480-B1	\$203.23
White, (Code 070)	R	#.2	89341-28480-A0	\$203.23
	L	#.2	89341-28480-A0	\$203.23

2010 Toyota Prius V Sedan

#R&R One Side Complete, Not Included in O/H

13	Harness, Sensor	#	82113-47040	\$119.66
	#Not Included in O/H			
14	Absorber, Impact	IOH	52611-47050	\$51.79
15	Hook, Tow	R	#.3 51961-50040	\$49.36
		L	#.3 51961-50040	\$49.36
	#Not Included in O/H			
16	Reinforcement, Bumper (Alum)	#.4	52021-47011	\$241.01

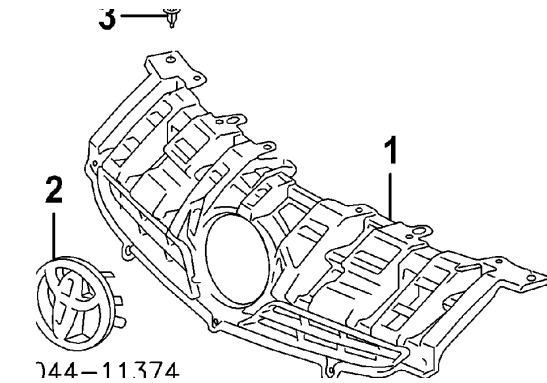
#w/Front Cover Removed, Not Included in O/H

17	Bracket, Reinforcement (Alum)	R	#.2 57013-47020	\$125.24
		L	#.2 57014-47040	\$125.24

#w/Bumper Reinforcement Removed, Not Included in O/H

18	Spoiler, Front	.3	76851-47030	\$146.21
19	Clip, Spoiler (a)		52161-02020	\$2.14
	(a) As Required			

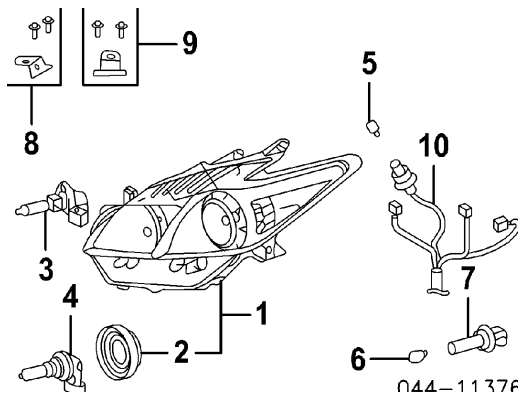
GRILLE



144-11374				
1 Grille	#1.2	53111-47020	\$119.98	
#Includes R&I Front Cover, Included in R&R or O/H Front Cover				
2 Emblem, Grille-See Front Bumper Section				
3 Clip, Grille		52161-02020	\$2.14	

FRONT LAMPS

COMBINATION LAMP
HALOGEN



Aim Lamps

.4

R&I Combination Lamp Assy

R #.4
L #.4

#w/Front Cover Removed

NOTE: R&R Does Not include aim lamps.

1 Lamp Assy, Combination	R	#.4	81130-47211	\$313.77
	L	#.4	81170-47211	\$313.77
#w/Front Cover Removed				
2 Cover, Bulb¶	R		90069-81008	\$9.23
	L		90069-81008	\$9.23
¶Included w/Combination Lamp Assy				
3 Bulb, High Beam	R	#.2	90981-13046	\$21.03
	L	#.2	90981-13046	\$21.03
4 Bulb, Low Beam	R	#.2	90981-13075	\$20.95
	L	#.2	90981-13075	\$20.95
5 Bulb, Clearance	R	#.2	00234-00192	\$1.04
	L	#.2	00234-00192	\$1.04
6 Bulb, Side Marker	R	#.2	00234-00192	\$1.04
	L	#.2	00234-00192	\$1.04
#R&R One Side Complete, Included in R&I/R&R Combination Lamp Assy				
7 Socket, Side Marker	R		90075-60077	\$9.40
	L		90075-60077	\$9.40
Repair Kit, Housing				
8 Upper	R	#.3	81193-47030	\$10.26
	L	#.3	81194-47030	\$10.26
9 Lower	R	#.3	81195-47030	\$10.52

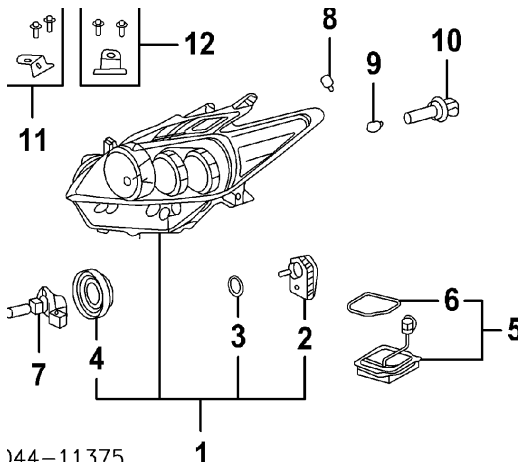
2010 Toyota Prius V Sedan

L	#.3	81196-47030	\$10.52
---	-----	-------------	---------

#w/Combination Lamp Assy Removed

10	Harness, Lamp	R		81125-47230	\$43.04
		L		81125-47230	\$43.04

COMBINATION LAMP
LED



Aim Lamps

R&I Combination Lamp Assy

R	#.4
L	#.4

#w/Front Cover Removed

NOTE: R&R Does Not include aim lamps.

1	Lamp Assy, Combination	R	#.6	81145-47221	\$791.83
		L	#.6	81185-47221	\$791.83

#w/Front Cover Removed

2	Motor, Headlamp Leveling¶	R	#.2	85661-12020	\$133.87
		L	#.2	85661-12020	\$133.87

#w/Combination Lamp Assy Removed

3	Seal, Motor¶	R		90075-99120	\$3.16
		L		90075-99120	\$3.16
4	Cover, Bulb¶	R		90069-81008	\$9.23
		L		90069-81008	\$9.23

¶Included w/Combination Lamp Assy

5	Module Assy, Lamp	R	#.2	81107-47240	\$497.14
		L	#.2	81107-47240	\$497.14

2010 Toyota Prius V Sedan

#w/Combination Lamp Assy Removed, Included in R&R Combination Lamp Assy

6 Gasket, Module (a)	R		90075-68007	\$9.40
	L		90075-68007	\$9.40

(a) Included w/Lamp Module Assy

7 Bulb, High Beam	R	#.2	90981-13046	\$21.03
	L	#.2	90981-13046	\$21.03
8 Bulb, Clearance	R	#.2	00234-00192	\$1.04
	L	#.2	00234-00192	\$1.04
9 Bulb, Side Marker	R	#.2	00234-00192	\$1.04
	L	#.2	00234-00192	\$1.04

#R&R One Side Complete, Included in R&I/R&R Combination Lamp Assy

10 Socket, Side Marker	R		90075-60077	\$9.40
	L		90075-60077	\$9.40

Repair Kit, Housing

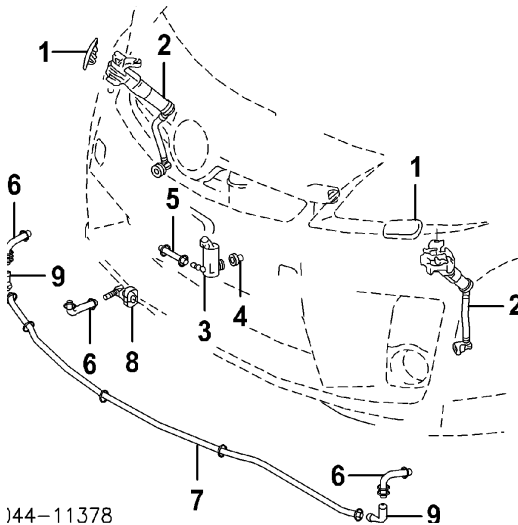
11 Upper	R	#.3	81193-47030	\$10.26
	L	#.3	81194-47030	\$10.26
12 Lower	R	#.3	81195-47030	\$10.52
	L	#.3	81196-47030	\$10.52

#w/Combination Lamp Assy Removed

Harness, Lamp (b)			82113-47010	\$58.05
-------------------	--	--	-------------	---------

(b) Order by Application

HEADLAMP WASHER



Refinish Washer Nozzle

R	.2
L	.2

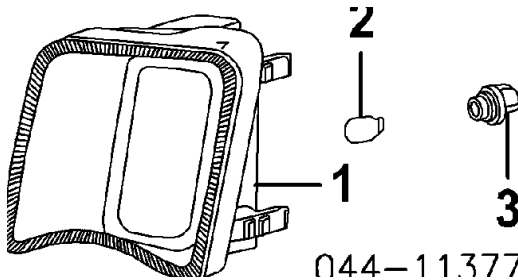
1 Nozzle, H/Lamp Washer

2010 Toyota Prius V Sedan

Beige, (Code 4T8)	R		85044-47010-E0	\$17.92
	L		85045-47010-E0	\$17.92
Black, (Code 202)	R		85044-47010-C0	\$17.92
	L		85045-47010-C0	\$17.92
Dark Blue, (Code 8T5)	R		85044-47010-J0	\$17.92
	L		85045-47010-J0	\$17.92
Gray, (Code 8V1)	R		85044-47010-J1	\$17.92
	L		85045-47010-J1	\$17.92
Red, (Code 3R3)	R		85044-47010-D0	\$17.92
	L		85045-47010-D0	\$17.92
Silver, (Code 1F7)	R		85044-47010-B0	\$17.92
	L		85045-47010-B0	\$17.92
White, (Code 070)	R		85044-47010-A1	\$17.92
	L		85045-47010-A1	\$17.92
2 Actuator, Headlamp Washer	R	#.2	85207-47010	\$242.41
	L	#.2	85208-47010	\$242.41
3 Motor, Washer		#.2	85280-47010	\$51.50
#w/Front Cover Removed				
4 Grommet, Motor			90068-32002	\$1.93
Hose, Fluid				
5 No. 1			90075-15053	\$5.66
6 No. 2, (3)			90075-15055	\$7.03
7 No. 3			90075-15052	
Joint, Elbow				
8 Inner			90075-17001	\$4.43
9 Outer	R		90075-17003	\$10.35
	L		90075-17004	\$6.46

Reservoir Assy, Washer-See Windshield Section

SIGNAL LAMP



R&I Turn Signal Lamp

R	#.2
L	#.2

#w/Front Cover Removed, Included in R&R or O/H Front Cover

2010 Toyota Prius V Sedan

1 Lamp, Turn Signal	R	#.2	81511-47020	\$26.89
	L	#.2	81521-47020	\$26.89
#w/Front Cover Removed, Included in R&R or O/H Front Cover				
2 Bulb, Turn Signal	R	#.2	90981-15021	\$4.49
	L	#.2	90981-15021	\$4.49
#Included in R&I/R&R Front Cover				
3 Socket, Turn Signal	R		90075-60028	\$8.69
	L		90075-60028	\$8.69

FOG LAMP

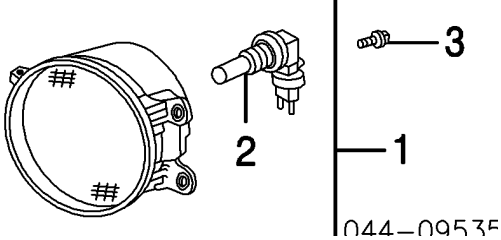


Diagram illustrating the fog lamp assembly components:

- 1: Fog Lamp Housing
- 2: Fog Lamp Bulb
- 3: Fog Lamp Socket
- 4: Fog Lamp Aim

044-09535

Aim Fog Lamps

R&I Fog Lamp Assy

R	#.2		
L	#.2		

#w/Front Cover Removed, Included in R&R or O/H Front Cover

NOTE: R&R Does Not include aim lamps.

1 Lamp Assy, Fog	R	#.2	81210-0D041	\$155.82
	L	#.2	81220-0D041	\$155.82
#w/Front Cover Removed, Included in R&R or O/H Front Cover				
2 Bulb, Fog Lamp¶				
Osram Brand	R	#.2	90981-13075	\$20.95
	L	#.2	90981-13075	\$20.95
Philips Brand	R	#.2	90981-13081	\$20.95
	L	#.2	90981-13081	\$20.95

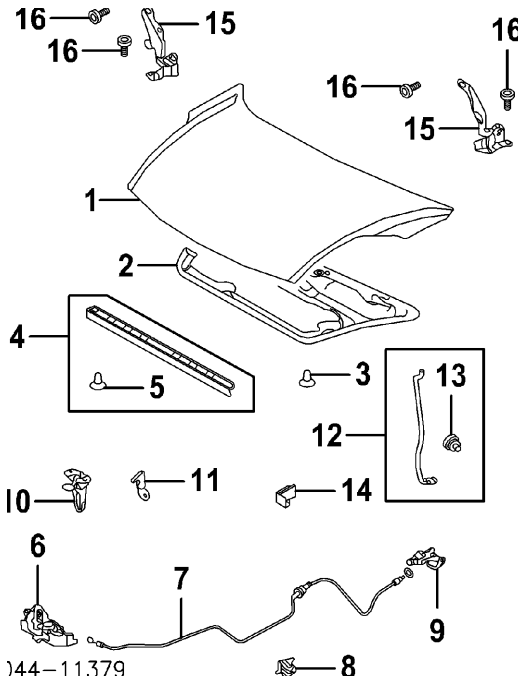
¶Included w/Fog Lamp Assy

#R&R One Side Complete, Included in R&I/R&R Fog Lamp Assy

3 Screw, Attaching (2/Side)	R		93567-A5014	\$0.78
	L		93567-A5014	\$0.78

HOOD

Procedures 4 and 28



Refinish Hood Outside
Add for Underside
Refinish Hinge

R&I Hood Assy

1 Hood (Alum)	1.5	53301-47050	\$219.41
2 Insulator	.3	53341-47020	\$209.55
3 Clip, Mounting (6)		90467-A0003	\$1.37
4 Seal Assy, Front Hood	.2	53395-47020	\$18.95
5 Fastener, Seal (2)¶		53145-60030	\$1.09
¶Included w/Front Hood Seal Assy			
6 Latch, Hood			
w/Sunroof	.3	53510-47100	\$69.28
w/o Sunroof	.3	53510-47090	\$69.28
7 Cable, Hood Release	#.5	53630-47040	\$27.95
#w/Front Cover & Fender Liner Removed			
8 Clamp, Cable		53614-47020	\$2.09
9 Handle, Release Cable			
Aqua	#.3	53601-52010-G1	\$38.13
Gray	#.3	53601-52010-B6	\$38.13

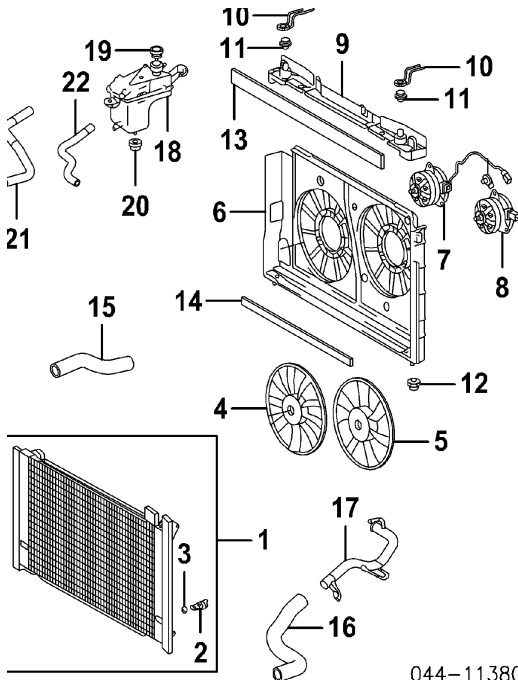
2.3
1.3
R .5
L .5
.5

2010 Toyota Prius V Sedan

Greige		#.3	53601-02020-E2	\$38.13
#Included in R&R Hood Release Cable				
10 Hook, Safety Latch		.2	53550-47010	\$50.73
11 Catch, Safety			53557-47010	\$4.54
12 Rod Assy, Support	L	.2	53440-47030	\$12.29
13 Grommet, Rod (a)	L		90480-15025	\$6.64
(a) Included w/Support Rod Assy				
14 Bracket, Support Rod	L	.2	53452-47010	\$6.14
15 Hinge, Hood	R	#.2	53410-47070	\$29.95
	L	#.2	53420-47070	\$29.95
#w/Hood Removed				
16 Bolt, Hinge (2/Side)	R		90080-11720	\$0.83
	L		90080-11720	\$0.83
Nozzle, Washer-See Windshield Section				

COOLING

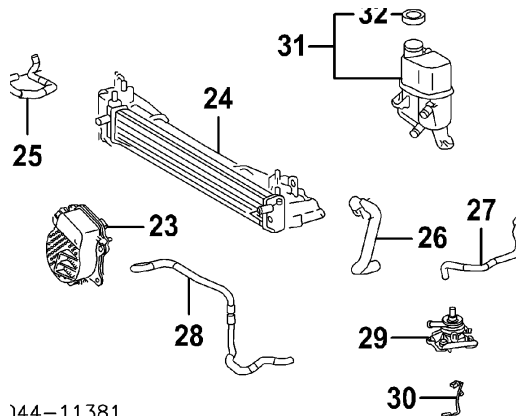
Procedures 5 and 28



R&I Radiator Assy		#3.2		
#w/Front Cover Removed				
1 Radiator Assy		#3.2	16400-37230	\$418.24
#w/Front Cover Removed				
2 Plug, Drain			16417-21280	\$4.63
3 Seal, Drain Plug			16492-21050	\$2.63
Included w/Radiator Assy				
4 Fan, Auxiliary Cooling	R	#3.0	16361-28360	\$92.52
5	L	#3.0	16361-37010	\$71.95
6 Shroud, Fan		#3.0	16711-37060	\$92.08
7 Motor, Auxiliary Fan	R	#3.0	16363-37010	\$203.58
8	L	#3.0	16363-37020	\$203.58
9 Shroud, Upper		#3.0	16712-37030	\$37.33
#R&R Complete, w/Radiator Removed Deduct 2.5				
10 Support, Upper	R		16533-28051	\$29.15
	L		16534-37010	\$9.40
11 Cushion, Upper	R		16523-0T020	\$5.92
	L		16523-0T020	\$5.92
12 Cushion, Lower	R		16535-20030	\$10.83
	L		16535-20030	\$10.83
13 Seal, Upper			16561-37010	\$8.23

2010 Toyota Prius V Sedan

14 Seal, Lower		16561-37020	\$3.54
15 Hose, Upper	#1.0	16572-37120	\$16.16
16 Hose, Lower	#1.3	16571-37140	\$16.16
#R&R Both 2.0			
17 Pipe, Radiator		16577-37020	\$67.88
18 Tank, Coolant	.8	16480-28080	\$212.35
19 Cap, Coolant		16475-51010	\$8.94
20 Grommet, Tank		90480-18010	\$2.87
Hose, Tank			
21 No. 1	.4	16261-37070	\$17.25
22 No. 2	.5	16264-37060	\$18.54



23 Pump, Water-See Engine/Trans Section

24 Cooler, Inverter	#.4	G9010-47030	\$367.31
#w/Condenser Removed			
Hose, Cooler			
25 No. 1	#.3	G9225-47021	\$42.67
26 No. 2	#.3	G9227-47020	\$30.67
27 No. 3	#.3	G9226-47020	\$48.61
28 No. 4	#.3	G9229-47020	\$67.16

#w/Condenser Removed, Each Additional .2

29 Pump, Auxiliary	5.5	G9040-48020	\$206.54
30 Harness, Wiring		G9208-47080	\$11.57
31 Tank Assy, Reserve	.7	G92A0-47010	\$195.54
32 Cap, Reserve (a)		16475-51010	\$8.94

(a) Included w/Reserve Tank Assy

2010 Toyota Prius V Sedan

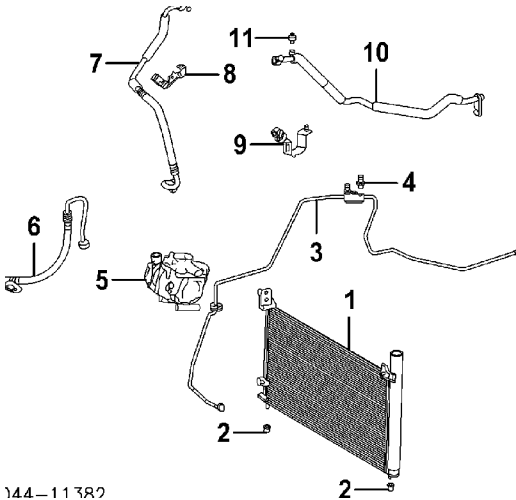
A/C REFRIGERANT CAPACITIES

A/C R-134a Refrigerant Capacity

16.8 Ozs (1.05 Lbs), 475 g

A/C HEATER/VENTILATION

Procedure 6



R&I A/C Condenser

#1.0

#w/Front Cover Removed

Evacuate & Recharge System

1.4

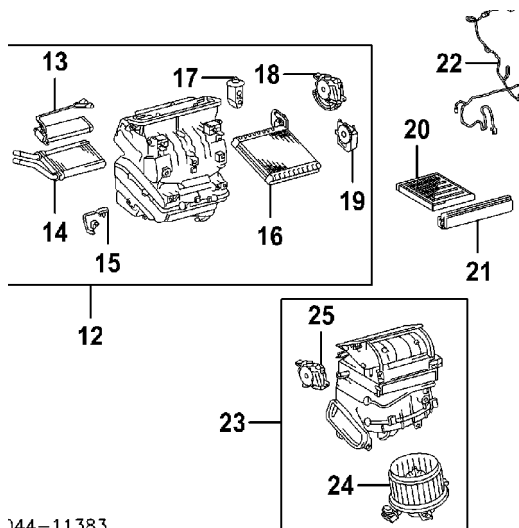
Recover Refrigerant

.3

NOTE: R&R Does Not include recover, evacuate and recharge system.

1 Condenser, A/C #w/Front Cover Removed	#1.4	88460-47150	\$711.65
2 Insulator (2)		16716-28010	\$2.80
3 Pipe, Condenser	1.4	88710-47050	\$178.79
4 Sensor, Pressure	.5	88719-33020	\$235.44
5 Compressor	2.0	88370-47030	\$2,238.02
6 Hose, Discharge	.8	88703-47040	\$99.68
7 Hose, Suction Bracket, Mtg	1.1	88704-47050	\$106.08
8 No. 1		88688-47150	\$15.29
9 No. 2		88688-1E381	\$21.57
10 Pipe, Suction	.9	88707-47040	\$105.18
11 Valve, Service	.5	88374-30010	\$1.97

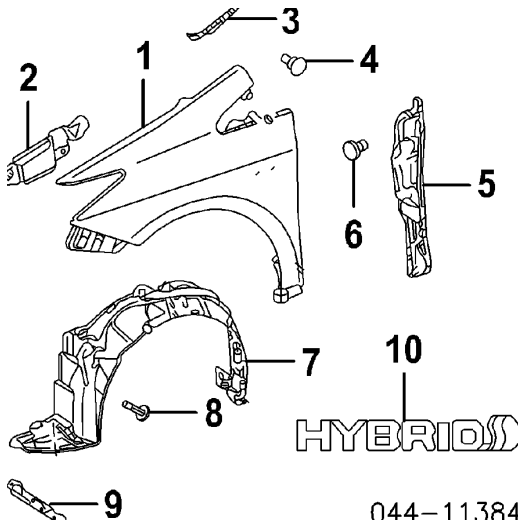
2010 Toyota Prius V Sedan



12	Evaporator/Heater Assy	#1.7	87050-47150	\$2,004.43
#w/Instrument Panel & Reinforcement Removed				
13	Heater¶		87710-12020	\$348.76
14	Core, Heater¶		87107-02230	\$345.61
15	Thermistor¶		88625-71010	\$12.94
16	Core, Evaporator¶		88501-47050	\$276.27
17	Valve, Expansion¶		88515-47040	\$82.35
18	Servo, Mode¶		87106-02200	\$153.93
19	Servo, Air Mix¶		87106-12170	\$170.71
¶Included w/Evaporator/Heater Assy				
20	Filter, Cabin		87139-07010	\$37.19
21	Case, Filter		88548-42020	\$1.45
22	Harness, A/C /Heater		82212-12010	\$17.43
23	Blower Assy			
	w/Sunroof		87130-47130	\$549.21
	w/o Sunroof		87130-47140	\$549.21
24	Fan & Motor (a)			
	w/Sunroof		87103-47040	\$169.95
	w/o Sunroof		87103-12080	\$149.66
25	Servo, Recirculation (a)		87106-47130	\$151.82
(a) Included w/Blower Assy				

FRONT FENDER

Procedures 7 and 28



Refinish Fender Outside

R	2.0
L	2.0
R	.5
L	.5
R	#1.8
L	#1.8

Add to Edge Fender

R&I Fender Assy

#w/Front Cover Removed, Includes R&I Combination Lamp, R&I/R&R Fender Liner & Cowl Grille

1 Fender	R	#2.0	53801-47040	\$216.00
	L	#2.0	53802-47040	\$216.00

#w/Front Cover Removed, Includes R&I Combination Lamp, R&I/R&R Fender Liner & Cowl Grille

2 Protector, Upper	R		53825-47010	\$24.66
	L		53826-47010	\$24.66
3 Seal, Fender	R		53866-47020	\$8.12
	L		53867-47030	\$8.12
4 Extension	R		53813-28090	\$2.74
	L		53813-28090	\$2.74
5 Protector, Rear	R		53827-47030	\$61.22
	L		53828-47030	\$61.22
6 Retainer, Protector	Upper	R	53857-47020	\$0.89
		L	53857-47020	\$0.89
	Lower	R	53857-47011	\$0.94
		L	53857-47011	\$0.94
7 Liner, Fender	R	.3	53875-47030	\$92.00
	L	.3	53876-47030	\$92.00

2010 Toyota Prius V Sedan

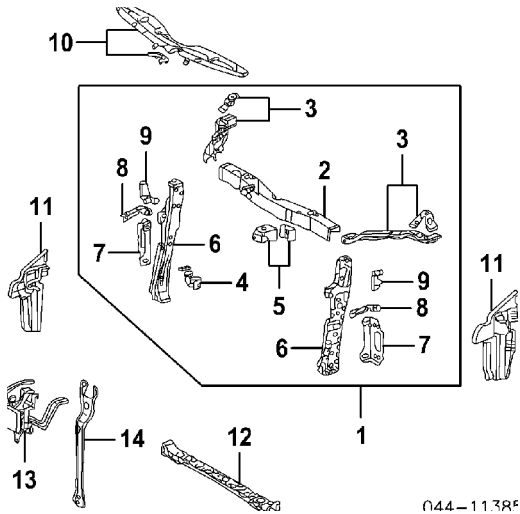
8 Retainer, Liner¶¶	R	47749-58010	\$1.00
	L	47749-58010	\$1.00
¶¶As Required			
9 Pad, Extension	R	53851-47040	\$26.38
	L	53852-47020	\$26.38
10 Nameplate (Adhesive) "HYBRID"	R	.2 75374-47050	\$27.81
	L	.2 75374-47060	\$27.81

UNDERHOOD DIMENSIONS

FRONT INNER STRUCTURE

Procedures 8 and 28

FRONT



Refinish Radiator Support Assy		1.5
Refinish Upper Tie Bar		.5
Refinish Tie Bar Extension	R	.5
	L	.5
Refinish Side Support	R	.5
	L	.5
Refinish Lower Tie Bar		1.0
Add to R&R Radiator Support		

To R&I/R&R Base Model Mechanical Components #2.3

#Includes R&I/R&R Radiator/Condenser Assy, Inverter Radiator Assy & Water Pump, Air Bag Sensors

To Aim Lamps	.4
Evacuate & Recharge System	1.4
Recover Refrigerant	.3

NOTE 1: Manufacturer advises that proper bleeding procedures must be followed when removing or installing any engine/hybrid cooling components.

NOTE 2: All Parts in this section are included in R&R Radiator Support Assy unless noted otherwise.

1 Support Assy, Radiator	#9.7	53201-47040	\$651.39
--------------------------	------	-------------	----------

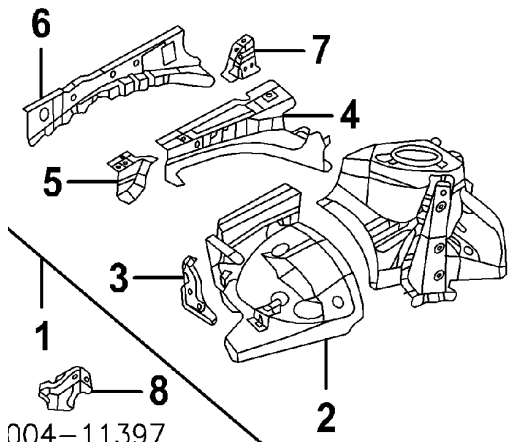
2010 Toyota Prius V Sedan

#Includes R&I Front Cover, R&I/R&R Combination Lamp Assemblies, Bumper Reinforcement, Brackets, Radiator, Cooling Fan Shroud, Blade & Motor Assy, Coolant Tank, Reserve Tank, Washer Tank, Horns, Deflectors, Hood Latch, Disconnect & Connect Hood Release Cable, Wiring &/or Harness as Necessary

2 Bar, Upper Tie¶		1.2	53208-12560	\$194.67
3 Extension, Tie Bar¶	R	.5	53202-47020	\$30.54
	L	.5	53203-47020	\$30.54
4 Bracket, Bumper Mtg¶		#.3	52147-47010	\$15.80
5 Stay, Front Mtg¶	R	#.3	52081-47030	\$30.87
	L	#.3	52082-47030	\$30.87
#Included in R&R Upper Tie Bar				
6 Support, Side¶	R	1.5	53209-12140	\$81.14
	L	1.5	53204-12060	\$81.14
7 Stay, Support¶	R	.5	53187-12030	\$35.32
	L	.5	53188-12030	\$35.32
8 Bracket, Headlamp¶	R		53271-47020	\$13.60
	L		53272-47020	\$13.60
9 Bracket, Hood Support¶	R		53238-47010	\$11.23
	L		53239-47010	\$11.23
¶Included w/Radiator Support Assy				
10 Cover, Upper		.3	53289-47030	\$65.76
11 Deflector, Side	R	.2	53293-47020	\$40.93
	L	.2	53294-47010	\$40.58
12 Bar, Lower Tie		1.5	53218-12901	\$98.26
Switch, Thermo			88790-22131	\$16.31
Bracket, Front			88688-0Z220	\$5.66
13 Sensor, Cruise Control-See Cruise Control System Section				
14 Bracket, Sensor			88215-47010	\$29.81

SIDE

2010 Toyota Prius V Sedan



Refinish Apron/Sidemember Assy Complete	R	1.5
	L	1.5
Refinish Apron Assy Complete	R	1.0
	L	1.0
Refinish Front Apron	R	.5
	L	.5
Refinish Front Member	R	.5
	L	.5
Refinish Lower Member	R	.5
	L	.5
Refinish Sidemember Assy Complete	R	1.0
	L	1.0
Refinish Sidemember Extension	R	.5
	L	.5
Refinish Sidemember Reinf	R	.5
	L	.5
Section Sidemember	R	#6.0
	L	#6.0

#w/Radiator Support Removed, w/Front Apron Removed Deduct 1.5

NOTE: For sectioning methods refer to Manufacturer's Body Repair Manual.

1 Apron Assy	R	7.0	53701-47050	\$341.41
	L	7.0	53702-47050	\$341.41
2 Apron, Front	R	4.0	53710-12030	\$89.91

2010 Toyota Prius V Sedan

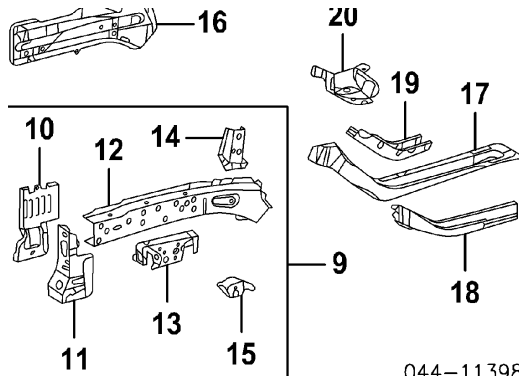
3 Extension, Apron	L	4.0	53720-12030	\$75.22
	R	.8	53813-47020	\$20.26
4 Member, Front	L	.8	53814-47020	\$23.06
	R	#4.0	53731-12170	\$74.16
5 Reinf, Spring	L	#4.0	53732-12150	\$74.16
	R	.5	53725-12040	\$27.29
6 Member, Lower	L	.5	53726-12040	\$27.29
	R	#4.0	53733-12070	\$44.07
	L	#4.0	53734-12070	\$44.07

#R&R One Side Complete

7 Plate, Apron	R	.5	53737-47020	\$14.35
	L	.5	53738-47020	\$14.35

¶Included w/Apron Assy

8 Bracket, Front Panel	R	.5	53835-47010	\$23.86
	L	.5	53836-47010	\$23.86



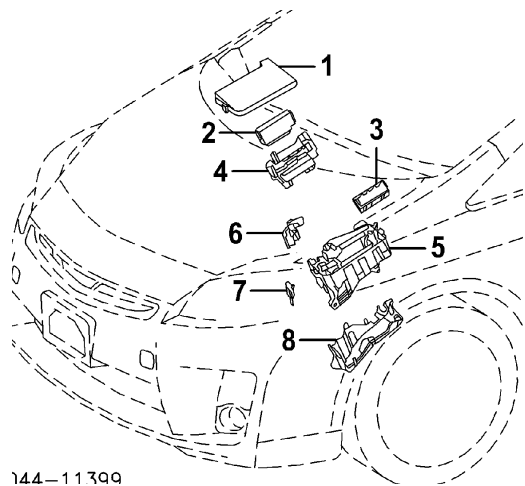
9 Sidemember Assy (HSS)	R	7.5	57027-12010	\$433.78
	L	7.5	57028-12020	\$433.78
10 Extension, Sidemember (HSS) (a)	R	1.0	57113-12220	\$68.91
	L	1.0	57114-12190	\$68.22
11 Reinf, Sidemember (HSS) (a)	R	1.0	57031-12010	\$130.84
	L	1.0	57032-12010	\$136.78
12 Sidemember (HSS) (a)	R	7.5	57111-12230	\$172.45
	L	7.5	57112-12190	\$172.45
13 Reinf, Front (HSS) (a)	R	1.0	57016-0R010	\$59.82
	L	1.0	57017-0R010	\$55.62
14 Gusset (HSS) (a)	R	.5	57188-12030	\$32.58
	L	.5	57189-12010	\$36.72
15 Bracket, Susp Mtg (HSS) (a)	R	.5	57105-12160	\$55.62
	L	.5	57106-12150	\$55.62

(a) Included w/Sidemember Assy

2010 Toyota Prius V Sedan

16 Plate, Outer Sidemember (HSS)	R	4.0	57115-12090	\$127.32
	L	4.0	57116-12090	\$129.44
17 Member, Lower Rear (HSS)	R	4.0	57191-12070	\$219.32
	L	4.0	57192-12060	\$221.09
18 Plate, Front Side (HSS)	R	2.5	57107-12120	\$99.00
	L	2.5	57108-12140	\$99.34
19 Reinf, Front Sidemember (HSS)	R	2.0	57033-12010	\$93.06
	L	2.0	57034-12010	\$93.06
20 Box, Torque (HSS)	R	2.0	57197-12040	\$85.00
	L	2.0	57198-12040	\$85.00

ELECTRICAL COMPONENTS



144-11399				
1 Cover, Upper Relay, Integration	.1	82662-47090	\$43.73	
2 No. 1	.3	82641-47040	\$130.49	
3 No. 2	.3	82641-71010	\$196.26	
4 Block, Fuse		82620-75010	\$89.20	
5 Block, Eng Room Relay Cover, End		82741-75010	\$79.77	
6 No. 1		82661-75010	\$8.72	
7 No. 2		82661-47040	\$3.29	
8 No. 3		82663-75010	\$48.27	

AIR BAG SYSTEM

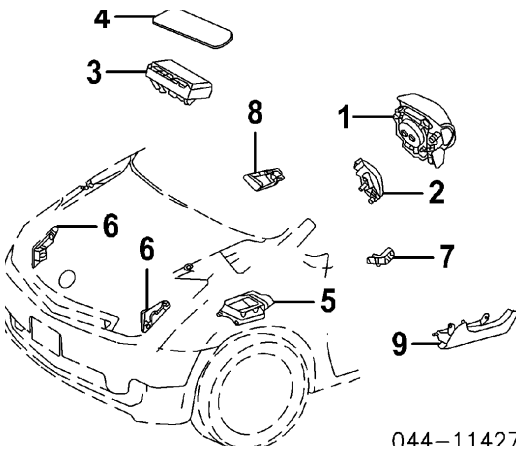
Procedure 30

NOTE 1: R&I/R&R or O/H Does Not include disable and enable or diagnose Air Bag System.

NOTE 2: Refer to Procedural Explanation 30 for Supplemental Restraint/Air Bag System Component Inspection and Replacement Information.

NOTE 3: For Air Bag System Service procedures, refer to Manufacturer's Service Repair Manual or Mitchell's Air Bag Service and Repair Manual.

FRONT



Disable & Enable Air Bag System .3

Diagnose Air Bag System (If Required) #.5

#Includes Disconnect & Connect Scan Tool & Retrieve/Clear Trouble Codes

Add to Initialize Occupant Detection ECU .4

1	Module, Driver Air Bag		
	Black	.4	45130-47110-C0 \$721.32
	Gray	.4	45130-47110-B0 \$721.32
2	Cable, Spiral	1.0	84307-47020 \$650.64
3	Module, Passenger Air Bag	#.7	73960-47060 \$757.50

#w/Upper Instrument Panel Removed

4 Cover, Pass Air Bag-See Instrument Panel Section

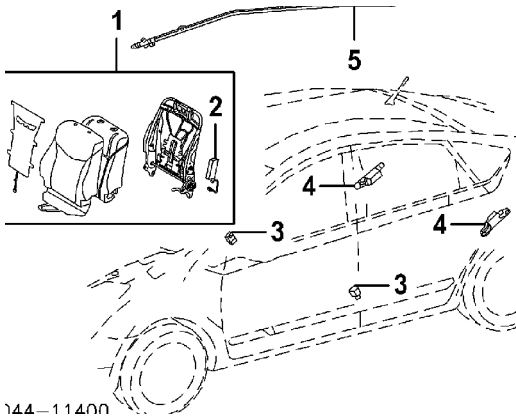
2010 Toyota Prius V Sedan

Pretensioner, Seat Belt-See Seat Belts Section

5	Computer, Air Bag	#.8	89170-47080	\$247.64
	#w/Center Console Removed			
6	Sensor, Front Air Bag	R #.3	89173-79025	\$66.19
		L #.3	89173-79025	\$66.19
	#w/Bumper Removed			
7	Sensor, Seat Position	L #.3	89178-33050	\$78.45
	Protector, Sensor	L	72277-47010	\$2.54
			89952-08011	
8	Computer, Occupant Detection	R #.4		\$356.82
	#w/Seat Assy Removed			
9	Module, Driver Knee Air Bag			
	Aqua	#.6	73900-47020-G0	\$839.55
	Gray	#.6	73900-47020-B0	\$839.55
	Greige	#.6	73900-47020-E0	\$839.55

#w/Instrument Panel Removed

SIDE



Disable & Enable Air Bag System

.3

Diagnose Air Bag System

#.5

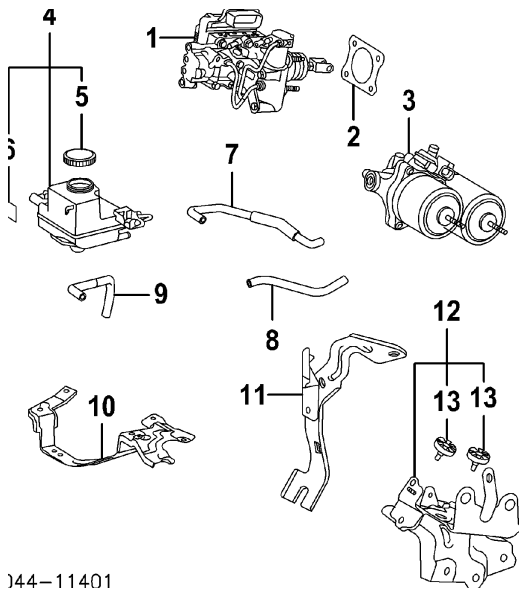
#Includes Disconnect & Connect Scan Tool & Retrieve/Clear Trouble Codes

1	Back Assy, Seat			
	Passenger Side			
	Cloth			
	Aqua	#.6	71430-47160-G0	\$955.72
	Gray	#.6	71430-47160-B0	\$955.72
	Greige	#.6	71430-47160-E0	\$955.72

2010 Toyota Prius V Sedan

Leather				
Aqua		#.6	71430-47170-G0	\$1,522.50
Gray		#.6	71430-47170-B0	\$1,522.50
Greige		#.6	71430-47170-E0	\$1,522.50
Driver Side				
Cloth				
Aqua		#.6	71440-47140-G0	\$955.72
Gray		#.6	71440-47140-B0	\$955.72
Greige		#.6	71440-47140-E0	\$955.72
Leather				
Aqua		#.6	71440-47080-G1	\$1,803.12
Gray		#.6	71440-47080-B1	\$1,803.12
Greige		#.6	71440-47080-E1	\$1,803.12
#w/Seat Assy Removed				
2 Module, Seat Air Bag-Serviced w/Seat Back Assy¶				
¶Included w/Seat Back Assy				
Sensor, Side Air Bag				
3 Front	R	#.4	89831-75010	\$119.78
	L	#.4	89831-75010	\$119.78
#w/Center Pillar Trim Removed				
4 Rear	R	#.4	89831-75020	\$119.78
	L	#.4	89831-75020	\$119.78
#w/Lower Quarter Trim Panel Removed				
5 Module, Side Curtain Air Bag	R	#1.2	62170-47020	\$657.65
	L	#1.2	62180-47020	\$657.65
#w/Headliner Removed				

ABS/BRAKES



144-11401

Bleed System

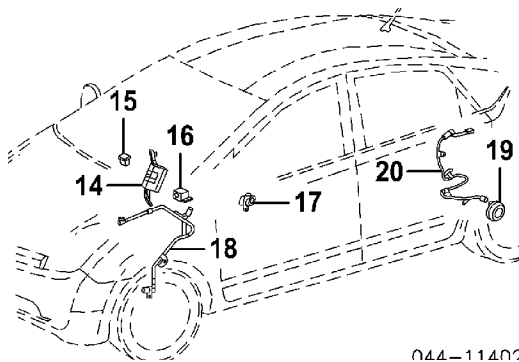
1.0

NOTE: R&R Does Not include bleed brake system.

1	Booster/Master Cylinder, Brake	2.6	47050-47060	\$2,148.53
2	Gasket, Booster		44785-02060	\$4.03
3	Pump, Booster	3.2	47070-47060	\$1,472.71
4	Reservoir Assy, Brake	.7	47220-47060	\$107.03
5	Cap, Reservoir¶		47230-58010	\$10.80
6	Label, Accumulator Caution¶		47997-47020	\$1.20
¶Included w/Brake Reservoir Assy				
Hose, Reservoir				
7	No. 1		47234-47060	\$4.72
8	No. 2		47235-47060	\$6.83
9	No. 3		44571-47050	\$15.46
10	Bracket, Reservoir	#.3	47233-47050	\$29.69
	#w/Reservoir Removed			
11	Bracket, Actuator	#.3	44595-47010	\$11.12
	#w/Reservoir Removed			
12	Bracket Assy, Actuator		44590-47050	\$61.22
13	Cushion, Mounting (2) (a)		47131-47070	\$1.37

(a) Included w/Actuator Bracket Assy

2010 Toyota Prius V Sedan

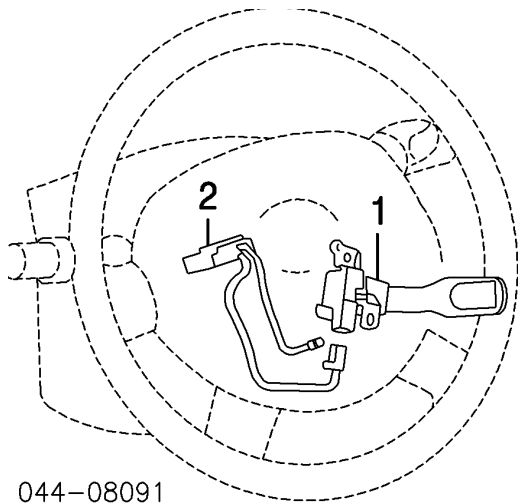


044-11400

14	Computer, Skid Control			.6	N.A.	
15	Buzzer, Skid Control			.4	86652-50010	\$54.33
16	Sensor, Yaw Rate			.7	89183-48030	\$689.14
17	Sensor, Brake Pedal Stroke			.6	89510-47010	\$167.91
18	Sensor, Front Speed	R	#.8		89542-47030	\$215.66
		L	#.8		89543-47030	\$215.66
	#R&R Both Sides 1.4					
19	Sensor, Skid Control-See Rear Suspension Section					
20	Harness, Rear Sensor	R			89516-47070	\$38.38
		L			89516-47080	\$38.38

2010 Toyota Prius V Sedan

CRUISE CONTROL SYSTEM



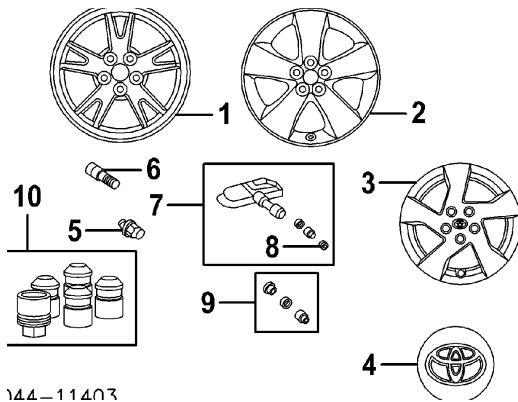
044-08091

1 Switch, Cruise Control	1.0 84632-08011	\$101.80
2 Harness, Cruise Control	1.3 84633-48010	
w/Pre-Collision System	1.3 84633-0E020	\$14.32
w/o Pre-Collision System	.5 88210-47020	\$2,081.68
Sensor, Cruise Control		

WHEEL

Procedure 10

ALLOY WHEEL



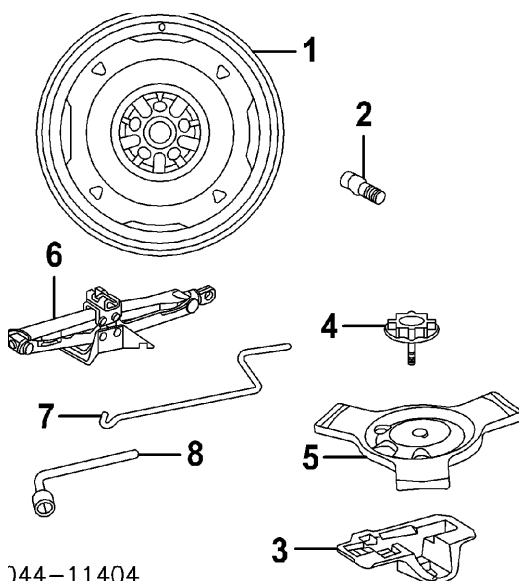
Add to R&I Spare Wheel & Tire Assy

.2

Wheel, Alloy¶		
1 15x6"	.3 42611-47110	\$375.57
2 17x7"	.3 42611-47170	\$454.64
¶Order by Application		
3 Cap, Wheel	42602-47070	\$74.71
4 Ornament, Wheel	42603-52110	\$15.12
5 Nut, Lug	90942-01033	\$6.72
6 Stem, Valve	90080-45006	\$9.49
7 Valve Assy, Tire Pressure	42607-33011	\$101.03
8 Cap, Valve (a)	90942-A5002	\$1.86
(a) Included w/Tire Pressure Valve Assy		
9 Installation Kit, Sensor	04423-0E010	\$6.77
10 Lock Kit, Wheel		
Dealer Installed	00276-00900	\$41.00

SPARE WHEEL & HARDWARE

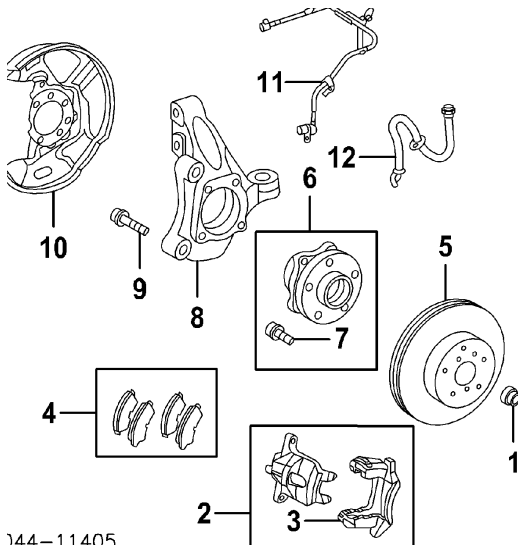
2010 Toyota Prius V Sedan



744-11404			
1	Wheel, Spare	42611-20840	\$98.95
2	Stem, Valve	90080-45006	\$9.49
3	Cushion, Spare Wheel	64777-47030	\$123.49
4	Bolt, Spare Wheel	51931-47010	\$8.72
5	Protector, Wheel	64778-47040	\$54.22
6	Jack	09111-50051	\$170.51
7	Handle, Jack	09113-52030	\$11.95
8	Wrench, Lug	09150-35070	\$23.58
	Carrier, Jack	58790-52020	\$4.20

FRONT SUSPENSION

Procedure 11



144-11405

R&I Suspension (One Side)

R	2.2
L	2.2

O/H Suspension (Includes R&I)

One Side (Includes R&I)

R	3.2
L	3.2

Both Sides (Includes R&I)

6.0

Adjust Four Wheel Alignment

1.6

Bleed Brake System

1.0

NOTE 1: R&I/R&R or O/H Does Not include alignment or bleed brake system.

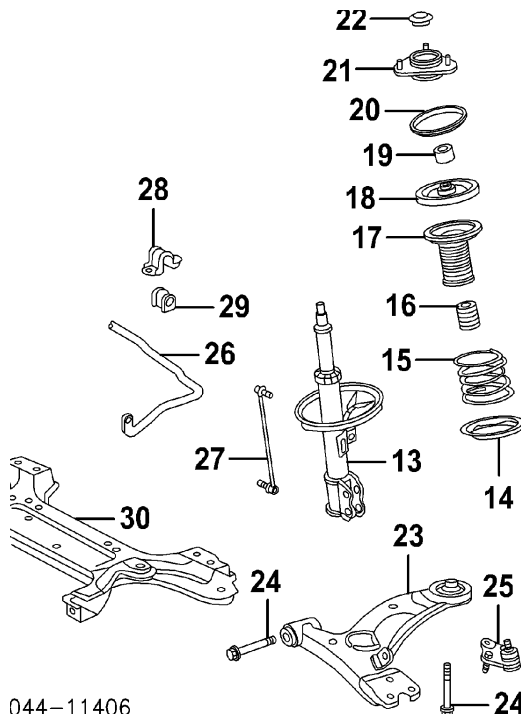
NOTE 2: All Parts in this section are included in overhaul unless noted otherwise.

1 Nut, Lock	R		90080-17238	\$6.57
	L		90080-17238	\$6.57
2 Caliper Assy, Brake	R	#.5	47730-47060	\$388.68
	L	#.5	47750-47060	\$388.68
#R&R Both Sides .8				
3 Brkt, Brake Caliper¶	R		47721-47060	\$117.55
	L		47722-47060	\$117.55
¶Included w/Brake Caliper Assy				
4 Pad Set, Brake		#1.0	04465-47060	\$52.99
#Deduct .5 for Each Caliper Removed				
5 Rotor, Brake	R	#.6	43512-47040	\$97.55

2010 Toyota Prius V Sedan

	L	#.6	43512-47040	\$97.55
#R&R Both Sides 1.0				
6 Hub Assy	R	#1.9	43550-47010	\$299.73
	L	#1.9	43550-47010	\$299.73
7 Stud, Lug (5/Side) (a)	R		90942-02049	\$3.60
	L		90942-02049	\$3.60
Bearing, Axle (a)-Serviced w/Hub Assy				
(a) Included w/Hub Assy				
8 Knuckle	R	#1.9	43201-47030	\$256.27
	L	#1.9	43202-47030	\$256.27
9 Bolt, Knuckle (4/Side)	R		90105-17019	\$5.94
	L		90105-17019	\$5.94
10 Shield, Splash	R	#1.9	47781-47030	\$22.64
	L	#1.9	47782-47020	\$22.64
#R&R One Side Complete, Includes R&R Rotor, R&R Both Sides 3.6				
11 Sensor, Front Speed-See ABS/Brakes Section				
12 Hose, Brake	R	#.3	90947-02F83	\$71.02
	L	#.3	90947-02F84	\$71.02
#w/Caliper Removed Deduct .2				

2010 Toyota Prius V Sedan



044-11406

13 Strut	R	#1.5	48510-80488	\$128.35
	L	#1.5	48520-80228	\$128.35
14 Insulator, Lower Spring	R	#1.5	48158-12040	\$13.75
	L	#1.5	48158-12040	\$13.75
15 Spring, Coil	R	#1.5	48131-47120	\$56.28
	L	#1.5	48131-47120	\$56.28
16 Bumper, Spring	R	#1.5	48331-75010	\$11.69
	L	#1.5	48331-75010	\$11.69
17 Insulator, Upper Spring	R	#1.5	48157-47020	\$25.41
	L	#1.5	48157-47020	\$25.41
18 Seat, Upper Spring	R	#1.5	48471-42010	\$18.69
	L	#1.5	48471-42010	\$18.69
19 Collar	R	#1.5	90387-15033	\$4.42
	L	#1.5	90387-15033	\$4.42
20 Bearing, Strut	R	#1.5	48619-28010	\$18.12
	L	#1.5	48619-28010	\$18.12
21 Support, Strut	R	#1.5	48609-47030	\$102.77
	L	#1.5	48609-47030	\$102.77
#R&R One Side Complete, w/Knuckle Removed Deduct 1.0, R&R Both Sides 2.8				
22 Cover, Support Dust	R		48684-0R010	\$19.32
	L		48684-0R010	\$19.32
23 Arm, Lower Control	R	#2.0	48068-47050	\$189.35
	L	#2.0	48069-47050	\$189.35

2010 Toyota Prius V Sedan

#Includes R&R Lower Ball Joint, w/Knuckle Removed Deduct .6

24 Bolt, Control Arm Mounting (2/Side)	R		90105-A0250	\$6.03
	L		90105-A0250	\$6.03
25 Joint, Lower Ball	R	#.9	43330-49185	\$56.54
	L	#.9	43330-49185	\$56.54

#w/Knuckle Removed Deduct .6

26 Bar, Stabilizer		#2.3	48811-47060	\$105.74
--------------------	--	------	-------------	----------

#Includes R&R Stabilizer Links, Brackets & Bushings, Not Included in O/H

27 Link, Stabilizer	R	#.4	48820-47020	\$104.94
	L	#.4	48820-47020	\$104.94

#Not Included in O/H

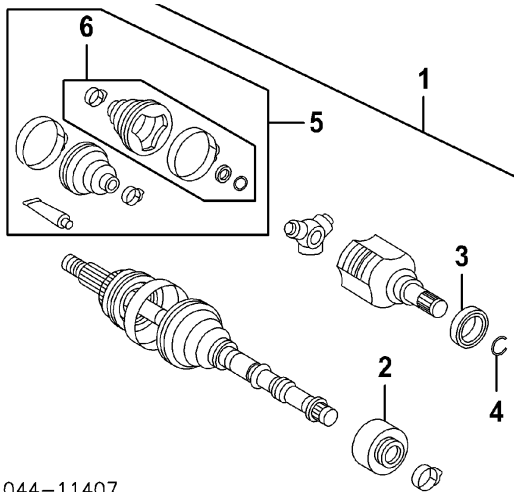
28 Bracket, Stabilizer	R	#.8	N.A.	
	L	#.8	N.A.	
29 Bushing, Stabilizer	R	#.8	48815-47030	\$23.86
	L	#.8	48815-47020	\$23.86

#R&R One Side Complete, R&R Both Sides 1.4, Not Included in O/H

30 Crossmember, Suspension		#6.8	51201-12441	\$1,481.99
----------------------------	--	------	-------------	------------

#Not Included in O/H

FRONT DRIVE AXLE



044-11407

R&I Drive Axle Assy

R #.9
L #.9

O/H Drive Axle Assy (Includes R&I)

R #1.9
L #1.9

#w/Necessary Suspension Components Removed

NOTE: All Parts in this section are included in overhaul unless noted otherwise.

1 Shaft Assy, Axle	R	#.9	43410-47030	\$540.40
	L	#.9	43420-47030	\$474.57

#w/Necessary Suspension Components Removed

Nut, Lock-See Front Suspension Section

2 Damper, Axle Shaft¶	R		43474-47020	\$91.65
	L		43474-12160	\$53.53
3 Cover, Lever¶	R		41336-06020	\$23.69
	L		43247-47010	\$10.52
4 Ring, Snap¶	R		90080-52017	\$1.83
	L		90080-52017	\$1.83
5 Boot Kit, Complete¶	R	#1.0	04428-47050	\$38.05
	L	#1.0	04428-47050	\$38.05

#w/Axle Shaft Assy Removed

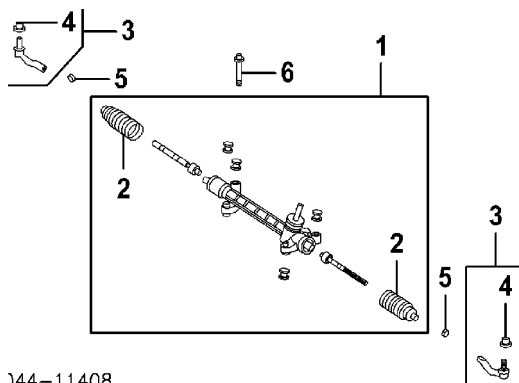
6 Boot Kit, Inner (a)¶	R		04437-47030	\$23.78
	L		04437-47030	\$23.78

2010 Toyota Prius V Sedan

¶ Included w/Axle Shaft Assy

(a) Included w/Complete Boot Kit

FRONT STEERING LINKAGE/GEAR



144-11408

R&I Steering Gear Assy

#5.6

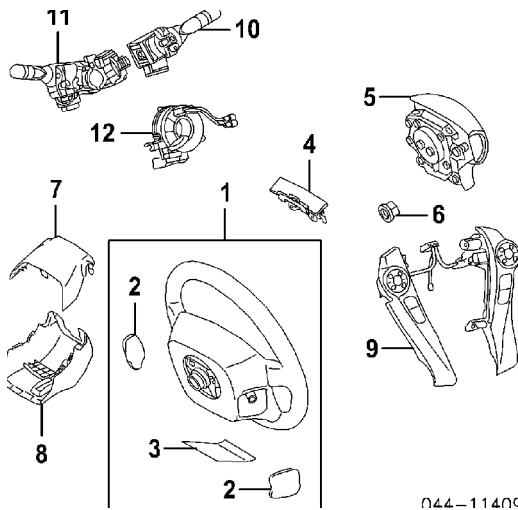
#w/Suspension Crossmember Removed Deduct 4.3

1	Gear Assy, Steering		#6.0	45510-47050	\$860.53
#w/Suspension Crossmember Removed Deduct 4.3					
2	Boot, Steering Rack¶	R	#.6	45535-49015	\$13.26
		L	#.6	45535-49015	\$13.26
¶Included w/Steering Gear Assy					
#Includes R&R Tie Rod End					
3	End Assy, Tie Rod	R	.3	45046-49225	\$60.90
		L	.3	45047-49165	\$60.90
4	Nut, Tie Rod (a)	R		90171-12014	\$1.90
		L		90171-12014	\$1.90
(a) Included w/Tie Rod End Assy					
5	Nut, Mounting	R		90080-17265	\$2.82
		L		90080-17265	\$2.82
6	Bolt, Mounting (4)			90119-A0326	\$6.06

STEERING WHEEL/COLUMN

NOTE: All Parts in this section are included in overhaul unless noted otherwise.

WHEEL & TRIM

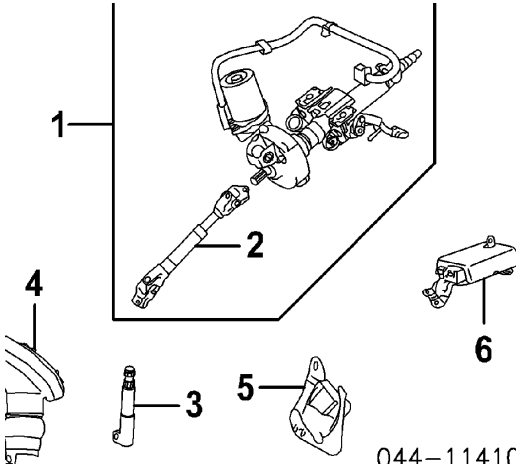


1	Wheel Assy, Steering			
	Leather			
	Black	.8	45100-47130-C0	\$762.13
	Gray	.8	45100-47130-B0	\$762.13
	Urethane			
	Black	.8	45100-47120-C0	\$331.90
	Gray	.8	45100-47120-B0	\$331.90
2	Cover, Steering Wheel¶			
	Black	R	45186-47030-C0	\$4.12
		L	45187-47010-C0	\$4.72
	Gray	R	45186-47030-B0	\$4.12
		L	45187-47010-B0	\$4.72
3	Cover, Lower¶			
	Black		45184-47010-C0	\$29.09
	Gray		45184-47010-B0	\$29.09
	¶Included w/Steering Wheel Assy			
4	Damper		45713-47030	\$29.66
5	Module, Driver Air Bag-See Air Bag System Section			
6	Nut, Steering Wheel		90179-12071	\$1.83
7	Cover, Upper			
	Black	#.6	45286-47040-C0	\$40.93
	Gray	#.6	45286-47040-B0	\$40.93
8	Cover, Lower			

2010 Toyota Prius V Sedan

Black	#.6	45287-12590-C0	\$75.22
Gray	#.6	45287-12590-B1	\$75.22
#R&R Complete			
9 Switch, Steering Wheel (a)	.5	84250-47040	\$524.72
(a) Order by Application			
10 Switch, Headlamp			
Halogen Type	1.0	84140-47140	\$134.32
LED Type	1.0	84140-47130	\$134.32
11 Switch, Wiper	1.0	84652-48180	\$175.25
12 Cable, Spiral-See Air Bag System Section			

COLUMN TILT

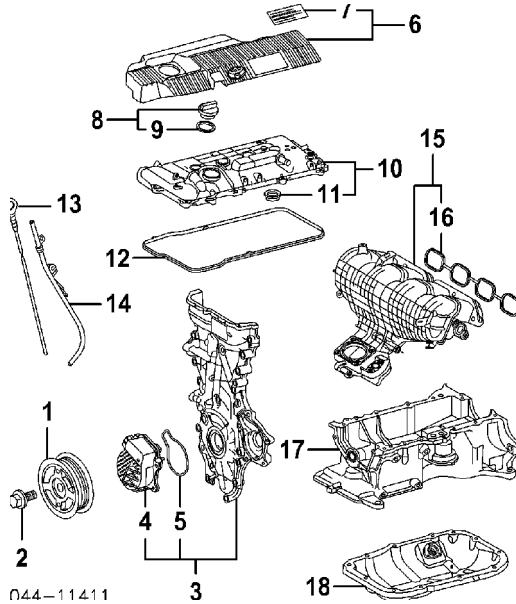


R&I Steering Column Assy	#2.6		
O/H Steering Column	#4.4		
#w/Instrument Panel Removed			
1 Column Assy, Steering	#3.7	45200-47140	\$1,518.21
#w/Instrument Panel Removed			
2 Shaft, Intermediate¶	4.0	45260-47060	\$226.01
¶Included w/Steering Column Assy			
3 Shaft, Lower	1.4	45221-12330	\$169.68
4 Cover, Shaft		45025-12300	\$74.16
5 Cover, Steering Hole		45259-47030	\$21.86
6 Computer, Power Steering (a)	.6	89650-47260	\$699.63
(a) Order by Application			

2010 Toyota Prius V Sedan

ENGINE/TRANSMISSION

Procedure 12



R&I Engine/Trans Assy

#13.2

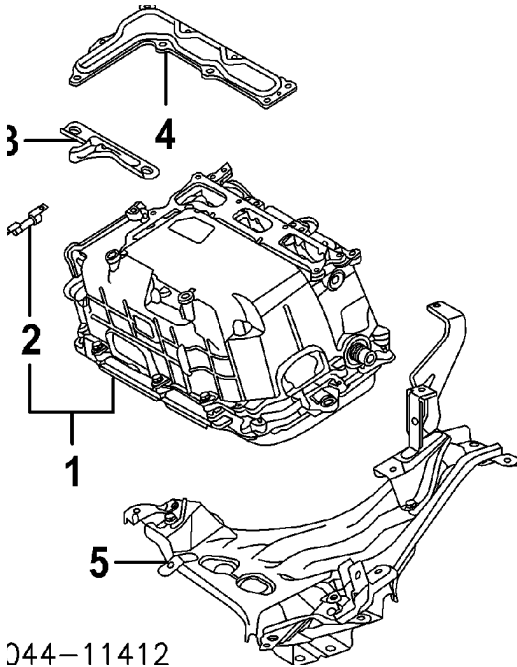
#w/Suspension Crossmember Removed Deduct 5.7

1 Pulley, Crankshaft	1.0 13470-37020	\$248.12
2 Bolt, Pulley	90080-11419	\$5.12
3 Cover Assy, Timing	11310-37060	\$535.21
4 Pump, Water¶	1.8 161A0-39015	\$303.86
5 Gasket, Water Pump¶	16271-37020	\$6.25
¶Included w/Timing Cover Assy		
6 Cover Assy, Cylinder Head	.4 11212-37090	\$88.51
7 Plate, Emblem (a)	11291-37060	\$3.17
(a) Included w/Cylinder Head Cover Assy		
8 Cap Assy, Oil	12180-31010	
9 Seal, Oil Cap (b)	90430-35001	\$1.91
(b) Included w/Oil Cap Assy		
10 Cover Assy, Valve	1.7 11201-37040	\$320.78
11 Gasket, Spark Plug Hole (4) (c)	11193-0T020	\$2.60
(c) Included w/Valve Cover Assy		
12 Gasket, Valve Cover	11213-37040	\$14.67

2010 Toyota Prius V Sedan

Sensor, Crank	1.1	90919-05060	\$114.38
13 Dipstick, Eng Oil		15301-37010	\$14.06
14 Tube, Eng Dipstick	.7	11409-37010	\$19.09
15 Manifold Assy, Intake	3.4	17120-37050	\$265.86
16 Gasket, Manifold (d)		17177-0T020	\$16.26
(d) Included w/Intake Manifold Assy			
17 Pan, Upper Eng Oil		11420-0T010	\$360.30
18 Pan, Lower Eng Oil	2.7	12102-37010	\$109.52

ELECTRIC MOTOR COMPONENTS



044-11412

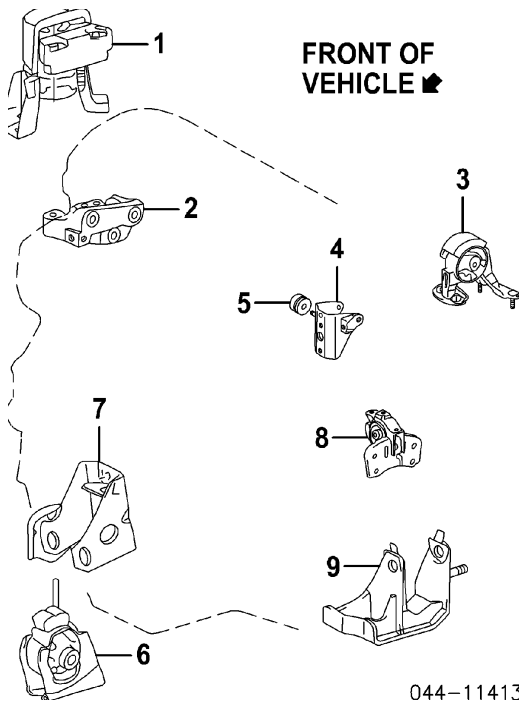
R&I Inverter Assy

4.6

NOTE: Refer to Special Cautions Section at the beginning of this vehicle text.

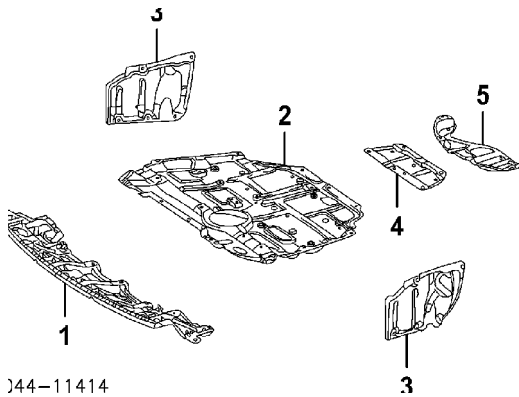
1 Inverter Assy	4.6	G9200-47140	\$2,658.42
2 Fuse	#.3	90982-11050	\$38.65
Included w/Inverter Assy			
#w/Inverter Assy Removed			
3 Bracket, Upper	.4	G9214-47050	\$16.75
4 Cover, Inverter	.5	G9022-47041	\$21.18
5 Bracket, Inverter	#.4	G9110-47011	\$135.04
#w/Inverter Assy Removed			

ENGINE/TRANSMISSION MOUNTS



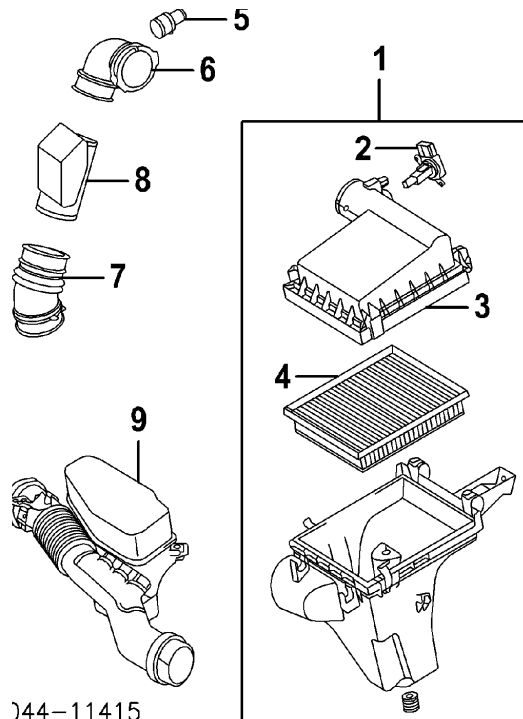
1 Mount, Front Eng			.9	12305-37160	\$164.02
2 Bracket, Front Eng Mount			#.3	12315-37030	\$84.31
#w/Mount Removed					
3 Mount, Right Eng	R	#1.8		12371-37090	\$103.00
4 Bracket, Right Eng Mount	R	#1.8		12321-37060	\$46.87
5 Damper		#1.8		12351-23010	\$20.92
#R&R Complete					
6 Mount, Left Eng	L		.9	12361-37090	\$90.51
7 Bracket, Left Eng Mount	L	#.3		12311-37090	\$46.87
#w/Mount Removed					
8 Mount, Trans			1.0	12372-37110	\$109.26
9 Bracket, Trans Mount		#.3		12325-37070	\$52.47
#w/Mount Removed					

ENGINE UNDER COVER



5144-11414				
1	Cover, Frt Eng Under	#.4	52618-47010	\$68.56
2	Cover, Center Eng Under	#.5	51410-12101	\$241.01
#R&R Both .6				
3	Cover, Side Eng Under	R	.3 51443-12080	\$24.64
		L	.3 51444-12050	\$24.64
Cover, Rear Eng Under				
4	Front		.3 51442-12270	\$24.64
5	Rear		.3 51442-12210	\$34.47

AIR CLEANER



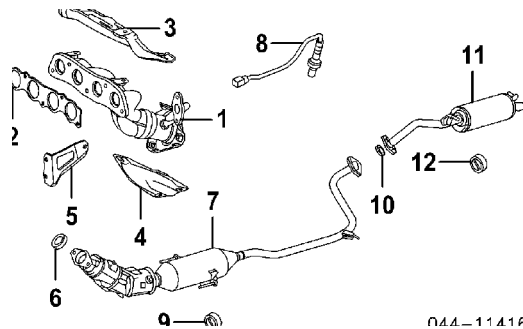
044-11415

R&I Air Cleaner Assy

1 Cleaner Assy, Air			
2 Meter, Air Flow			
3 Cover, Air Cleaner			
4 Element, Air Cleaner			
Included w/Air Cleaner Assy			
5 Union, Hose		90904-06008	\$11.12
Hose, Air Cleaner			
6 No. 1	#.3	17881-37120	\$25.98
7 No. 2	#.3	17882-37040	\$25.98
8 Resonator, Air Intake	#.3	17894-37010	\$30.61
#R&R Complete			
9 Inlet, Air Cleaner	.3	17750-37010	\$124.52

2010 Toyota Prius V Sedan

EXHAUST



R&I Exhaust System

#2.2

R&R Exhaust System Complete

#1.8

#Does Not Include R&R Exhaust Manifold & Heat Shields

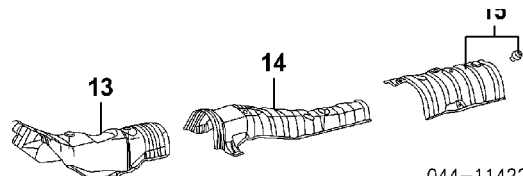
1	Manifold, Exhaust	1.7	17141-37110	\$218.57
2	Gasket, Exhaust Manifold		17173-37010	\$19.15
3	Shield, Upr Manifold Heat	#.6	17167-37080	\$66.82

#Included in R&R Exhaust Manifold

4	Shield, Lwr Manifold Heat		17168-37110	\$26.84
5	Stay, Manifold		17118-37080	\$15.03
6	Gasket, Front Pipe		17451-0D140	\$37.47
7	Pipe, Front	1.8	17410-37300	\$1,389.10

8 Sensor, Oxygen-See Emission System Section

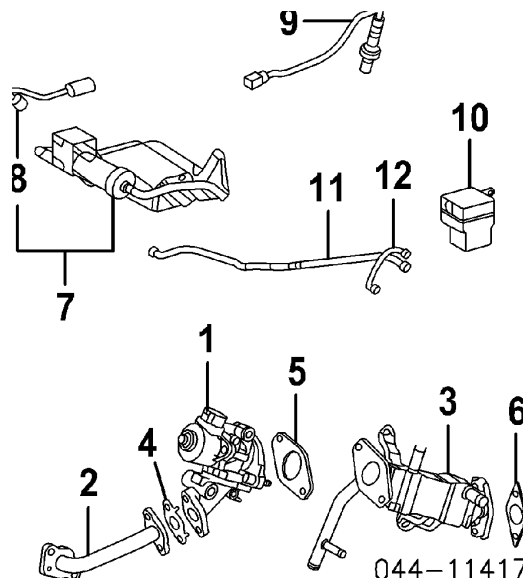
9	Support, Pipe (2)		17565-0S010	\$18.29
10	Gasket, Muffler		17451-23041	\$19.98
11	Muffler	.6	17430-37380	\$208.74
12	Support, Muffler (2)		17565-0P040	\$15.26



13	Shield, Front Heat	#.4	58151-47040	\$86.05
14	Shield, Center Heat	#.4	58153-47030	\$74.51
15	Shield, Rear Heat	#.3	58327-47020	\$57.36

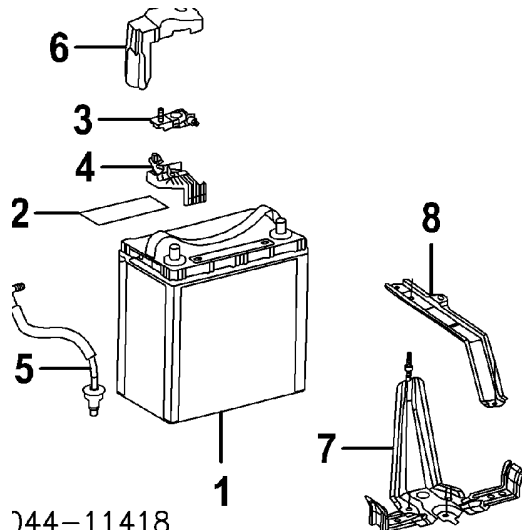
#w/Exhaust System Removed

EMISSION SYSTEM



1	Valve, EGR	1.3	25620-37110	\$280.14
2	Pipe, EGR	.8	25610-37010	
3	Adapter, Valve		25601-37010	\$313.09
	Gasket, EGR			
4	No. 1		25634-37010	\$3.09
5	No. 2		25627-37010	\$3.09
6	No. 3		25685-37010	\$3.00
7	Canister Assy, Vapor	2.0	77740-47060	\$742.04
8	Harness, Emission¶		N.A.	
¶Included w/Vapor Canister Assy				
9	Sensor, Oxygen	.7	89465-47080	\$147.52
10	Filter, Canister		77746-47010	\$50.39
	Hose, Vent			
11	No. 1		77404-47060	\$46.87
12	No. 2		77404-47090	\$26.44

ELECTRICAL
BATTERY



744-11418

1 Battery

.4 N.A.

2 Label, Battery Caution-See Information Labels
Section

3 Terminal, Positive

90982-05063 \$25.46

4 Holder, Sensor

28859-37020 \$4.94

5 Hose, Vent

28885-37010 \$15.35

6 Cover, Connector

82821-47110 \$10.83

Cable, Negative Battery

N.A.

7 Tray, Battery

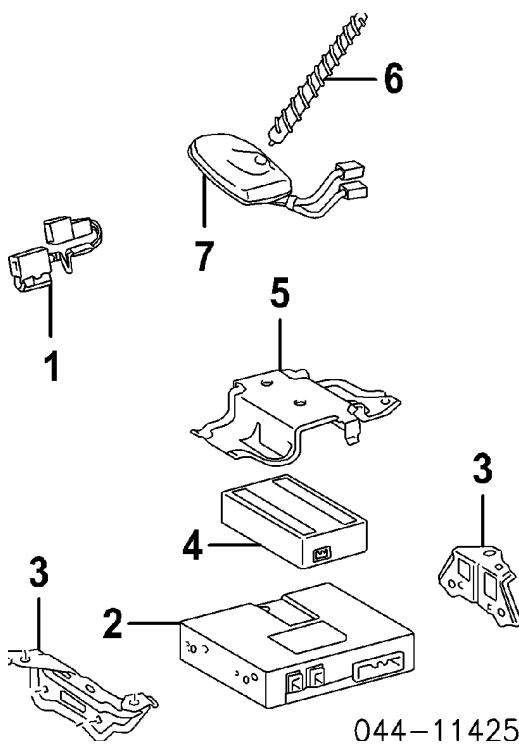
74440-47030 \$22.95

8 Strap, Battery

74481-47050 \$8.55

COMMUNICATIONS SYSTEM

2010 Toyota Prius V Sedan



- 1 Microphone
- 2 Transceiver, Mobile
- 3 Bracket, Mounting
- 4 Battery
- 5 Bracket, Battery
- 6 Antenna, Telephone
- 7 Amplifier, Antenna

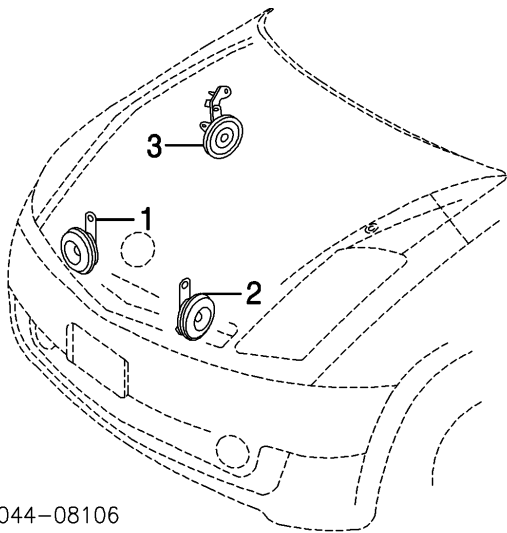
HORN

044-11425

R
L

.4	86730-20050	\$109.49
.7	86741-75010	\$3,264.28
	86719-47080	\$6.72
	86719-47090	\$10.97
.4	86777-0W060	\$174.30
	86719-47100	\$18.63
	86761-47011	\$85.37
.5	86760-47010	\$188.45

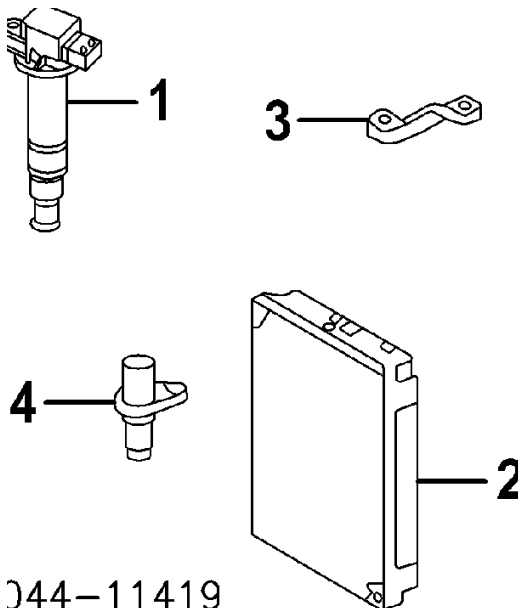
2010 Toyota Prius V Sedan



044-08106

1 Horn, Low Note	#.2	86520-28180	\$60.70
2 Horn, High Note	#.2	86510-28130	\$60.70
#w/Front Bumper Removed, R&R Both .3			
3 Horn, Anti-Theft	.3	N.A.	

IGNITION



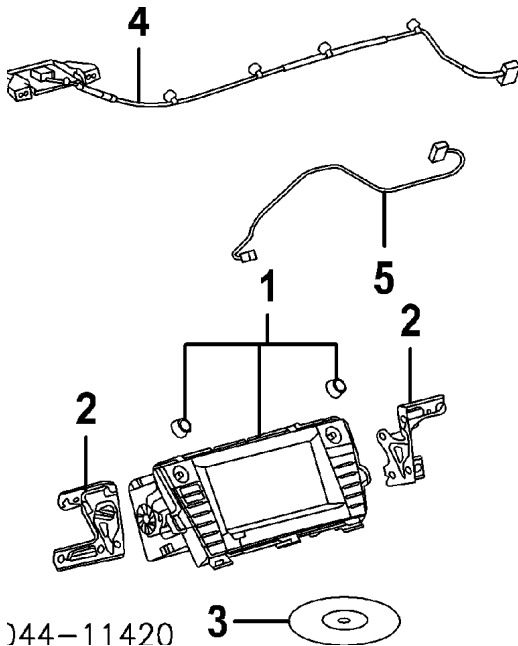
044-11419

R&R Ignition Coils Complete			
1 Coil, Ignition (4)	.7		
2 Computer, Eng Control	.5	90919-02258	\$95.87
3 Bracket, Computer	.8	89660-47301	\$773.45
		89669-47070	\$12.55

2010 Toyota Prius V Sedan

4 Sensor, Crank-See Engine/Trans Section

NAVIGATION SYSTEM



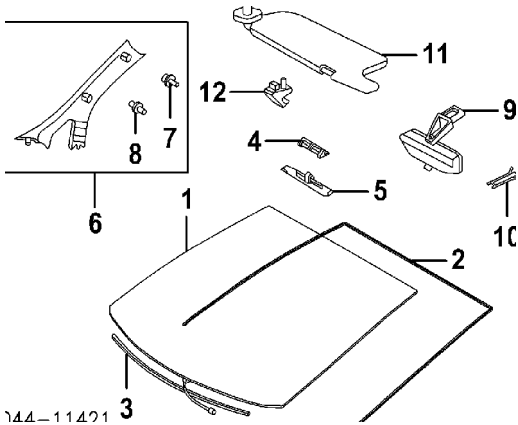
- 044-11420
- 1 Display, Navigation
 - 2 Bracket, Mounting

- 3 Disc, Navigation
- 4 Antenna, Navigation
- 5 Wire, Navigation

	1.2	86100-47130	\$4,373.47
R		86211-47060	\$14.89
L		86212-47060	\$14.89
		N.A.	
	1.5	86860-47070	\$187.85
		86808-47070	\$54.56

WINDSHIELD

Procedure 13



R&I Windshield

#3.2

#Includes R&I/R&R Cowl Grille, Sun Visors, Loosen Headliner & Clean Up Old Adhesive as Necessary

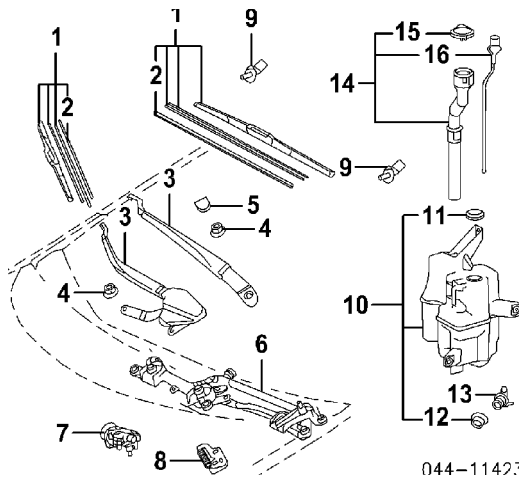
1	Glass, Windshield		
	Toyota		
	G Type		
	w/Lane Departure Warning System	#2.8	56101-47906 \$375.00
	w/o Lane Departure Warning System	#2.8	56101-47905 \$375.00
	S Type		
	w/Rear View Camera	#2.8	56101-47905 \$375.00
	w/o Rear View Camera	#2.8	56101-47904 \$375.00
	NAGS	#2.8	N.A.
	Adhesive, Glass	#	N.A.
2	Moulding, Windshield	#2.8	75533-47050 \$30.81
3	Dam, Lower Windshield	#2.8	56117-47030 \$10.32
	#Includes R&I/R&R Cowl Grille, Sun Visors, Loosen Headliner & Clean Up Old Adhesive as Necessary		
	Stopper, Windshield		
4	Type 1, (2)		56115-30100 \$2.20
5	Type 2, (2)		56116-22050 \$2.14
6	Garnish Assy, Pillar	R .3	62210-47080-B0 \$135.38
		L .3	62220-47080-B0 \$135.38
	Clip, Garnish (a)		
7	Upper	R	90467-10161 \$1.06
		L	90467-10161 \$1.06
8	Lower	R	62217-20010 \$2.83
		L	62217-20010 \$2.83

2010 Toyota Prius V Sedan

(a) Included w/Pillar Garnish Assy

9 Mirror, Rear View			
w/Anti-Glare			
w/Rear View Camera	.2	87810-0W250	\$965.48
w/o Rear View Camera	.2	87810-0W260	\$682.14
w/o Anti-Glare	.2	87810-60191	\$106.00
10 Cover, Wire			
w/Anti-Glare		87818-0W050	\$9.68
w/o Anti-Glare		87818-47010	\$11.58
11 Visor, Sun	R	.2 74310-47210-B0	\$99.69
	L	.2 74320-47200-B0	\$99.69
12 Holder, Sun Visor	R	74348-33040-B1	\$8.66
	L	74348-33040-B1	\$8.66

WIPER SYSTEM



1 Blade Assy, Wiper	R	.1	85212-47040	\$40.90
	L	.1	85222-75010	\$38.01
2 Insert, Blade¶	R	.1	85214-30390	\$7.35
	L	.1	85214-68020	\$6.09

¶Included w/Wiper Blade Assy

3 Arm, Wiper	R	#.2	85211-47100	\$167.56
	L	#.2	85221-47090	\$62.28

#Includes R&R Wiper Blade Assy or Insert

4 Nut, Wiper Arm				
Right, (2)	R		90176-10005	\$1.15
	L		90179-10223	\$1.11
5 Cover, Wiper Arm	L		85292-13010	\$5.12
6 Link, Wiper		#1.0	85150-47140	\$171.42
7 Motor, Wiper		#1.0	85110-50140	\$298.25

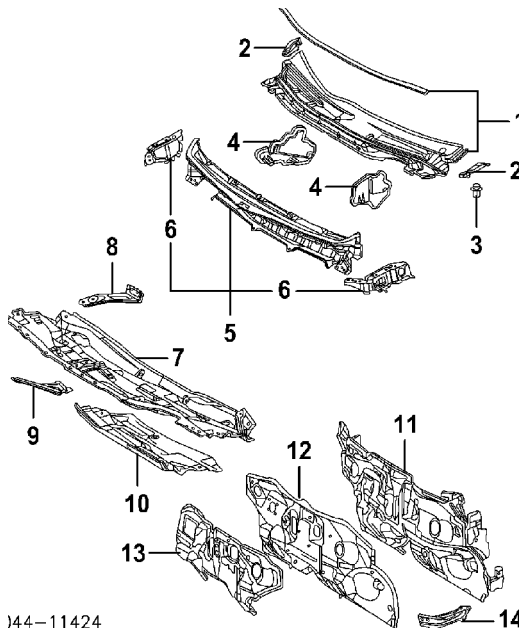
2010 Toyota Prius V Sedan

#R&R Complete, Includes R&I/R&R Cowl Grille

8 Crank, Wiper			85012-58030	\$44.38
9 Nozzle, Washer (b)				
Type A	R	#.2	85381-12330	\$17.95
	L	#.2	85381-12330	\$17.95
Type B	R	#.2	85381-12340	\$17.95
	L	#.2	85381-12340	\$17.95
Type C	R	#.2	85381-12350	\$17.95
	L	#.2	85381-12350	\$17.95
(b) Non-Reusable Part				
#Included in R&R Hood				
10 Reservoir Assy, Washer				
Halogen H/Lamps		#.4	85315-47140	\$96.54
LED H/Lamps		#.4	85355-47010	\$96.54
#w/Fender Liner Removed				
11 Cap, Reservoir (c)			85336-30160	\$5.34
12 Bushing, Reservoir (c)			85336-60300	\$3.46
(c) Included w/Washer Reservoir Assy				
13 Pump, Washer				
Front Washer		#.2	85330-60190	\$51.64
Rear Washer			85330-60180	\$51.64
#w/Fender Liner Removed, Included in R&R Washer Reservoir				
14 Neck Assy, Filler			85319-47120	\$26.35
15 Cap, Filler Neck (a)			85386-60060	\$2.00
16 Indicator, Level (a)			85318-47110	\$5.60
(a) Included w/Filler Neck Assy				

COWL & DASH

Procedures 14 and 28

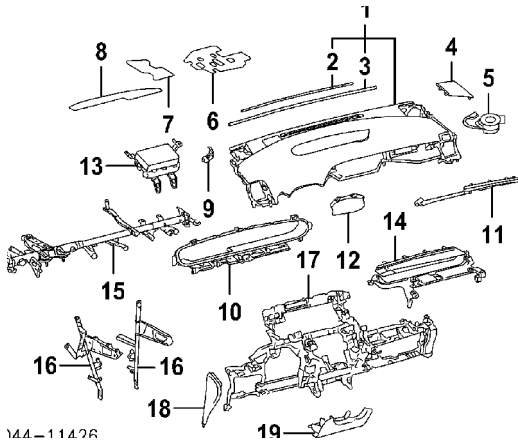


J44-11424

R&I Cowl Grille		#.6		
#Includes R&R Wiper Arms				
1 Grille, Cowl		#.6	55708-47110	\$360.30
#Includes R&R Wiper Arms				
2 Vent, Cowl	R		55083-47020	\$11.89
	L		55084-47020	\$11.89
3 Clip, Cowl	R		90467-07076-C0	\$0.89
	L		90467-07076-C0	\$0.89
4 Plate, Side	R		55734-47030	\$25.95
	L		55737-47050	\$23.72
5 Panel Assy, Upper Cowl			55700-47170	\$316.23
6 Panel, Inner Top¶	R		55705-47020	\$44.07
	L		55706-47020	\$44.07
¶Included w/Upper Cowl Panel Assy				
7 Panel, Outer Cowl Top			55701-47030	\$316.23
8 Reinf, Cowl	L		55736-47030	\$28.32
9 Extension, Front	R		53715-47010	\$22.35
10 Insulator, Panel			55224-47010	\$94.11
11 Insulator, Inner Dash			55210-47080	\$202.54
12 Panel, Dash			55101-12B60	\$440.75
13 Insulator, Outer Dash			55223-47050	\$137.47
14 Brace, Dash	R		55137-47030	\$29.47
	L		55138-47050	\$28.89

INSTRUMENT PANEL

Procedure 14



R&I Upper Instrument Panel Assy

#3.6

#Includes R&I Center Console Assy

R&I Instrument Panel Assy

#7.2

#Includes R&I Upper Instrument Panel Assy

1 Panel Assy, Upper Instrument

Black	#4.2	55300-47060-C0	\$537.22
Gray	#4.2	55300-47060-B0	\$537.22

#Includes R&I Center Console Assy

Seal, Panel¶

2 No. 1		55355-47040	\$3.23
3 No. 2		55349-47070	\$7.49

¶Included w/Upper Instrument Panel Assy

4 Panel, Speaker

Black	R	.2	55473-47010-C0	\$24.66
	L	.2	55472-47020-C0	\$24.66
Gray	R	.2	55473-47010-B0	\$24.66
	L	.2	55472-47020-B0	\$24.66

5 Speaker

Std Sound System	R	.4	86160-47100	\$82.39
	L	.4	86160-47100	\$82.39
Premium Sound System	R	.4	86160-0W800	\$171.97
	L	.4	86160-0W800	\$171.97

Cushion, Inst Panel

2010 Toyota Prius V Sedan

6	No. 1		55356-47030	\$27.01
7	No. 2		55358-47050	\$16.86
8	No. 3		55359-47020	\$6.72
9	Stay, Panel	R	55326-47030	\$8.17
		L	55327-47030	\$8.17
10	Panel, Meter	1.0	55403-47040	\$78.37
11	Panel, Center Finish		55475-47060	\$92.00
12	Spacer		55418-47020	\$13.23

13 Module, Passenger Air Bag-See Air Bag System Section

Cover, Pass Air Bag-Serviced w/Upper Instrument Panel Assy

14	Panel, Cluster Finish		55410-47090	\$193.46
15	Reinf, Inst Panel	#1.2	55330-47090	\$335.47

#w/Instrument Panel Removed, Not Included in R&R Instrument Panel

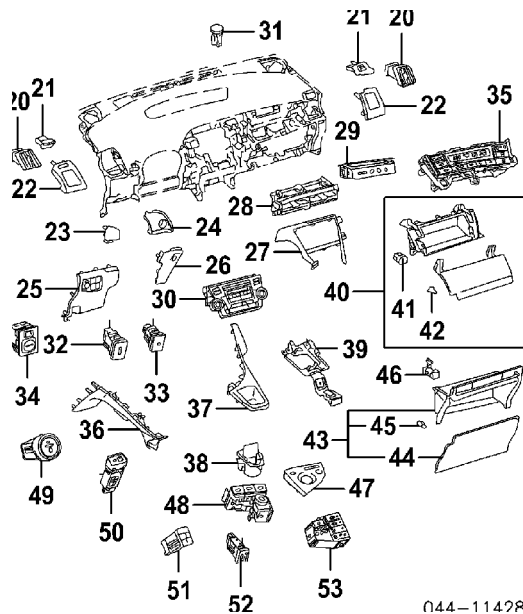
16	Brace, Reinf	R	55307-47020	\$55.27
		L	55306-47070	\$70.31
17	Panel, Instrument			
	Aqua	#9.4	55303-47050-G0	\$288.25
	Gray	#9.4	55303-47050-B0	\$288.25
	Greige	#9.4	55303-47050-E0	\$288.25

#Includes R&I Upper Instrument Panel Assy

18	Cap, End			
	Aqua	R	.2 55435-47010-G0	\$47.59
		L	.2 55436-47010-G0	\$47.59
	Gray	R	.2 55435-47010-B0	\$47.59
		L	.2 55436-47010-B0	\$47.59
	Greige	R	.2 55435-47010-E0	\$47.59
		L	.2 55436-47010-E0	\$47.59

19 Module, Driver Knee Air Bag-See Air Bag System Section

2010 Toyota Prius V Sedan



044-11428

20 Register, Air	R	.3	55652-47010	\$110.57
	L	.3	55652-47010	\$110.57
21 Nozzle, Air Inlet				
Black	R	.2	55961-47030-C0	\$17.61
	L	.2	55961-47030-C0	\$17.61
Gray	R	.2	55961-47030-B0	\$17.61
	L	.2	55961-47030-B0	\$17.61
22 Bezel, Air Outlet				
Right Side				
Aqua	R	.2	55662-47030-G0	\$25.12
Gray	R	.2	55662-47030-B0	\$25.12
Greige	R	.2	55662-47030-E0	\$25.12
Left Side				
Black	L	.2	55661-47070-C0	\$24.66
Gray	L	.2	55661-47070-B0	\$24.66
23 Panel, Finish				
Black	L	.2	55412-47030-C0	\$14.12
Gray	L	.2	55412-47030-B0	\$14.12
24 Panel, Upper		.2	55044-47060	\$78.71
25 Panel, Lower Finish				
Aqua	L	.4	55480-47020-G0	\$82.57
Gray	L	.4	55480-47020-B0	\$82.57
Greige	L	.4	55480-47020-E0	\$82.57
26 Base, Switch				
Aqua			55446-47030-G0	\$35.32
Gray			55446-47030-B0	\$35.32
Greige			55446-47030-E0	\$35.32

2010 Toyota Prius V Sedan

27	Garnish, Cluster	.4	55474-47080	\$92.00
28	Register, Center	.5	55670-47070	\$151.82
29	Lamp, Seat Belt Warning		83950-47060	\$83.60
30	Radio (a)	.7	86120-47370	\$1,681.43
	Harness, Instrument Panel (a)	#	82145-47F90	\$2,277.05

(a) Order by Application

#w/Instrument Panel Removed, Not Included in R&R Instrument Panel

Display, Navigation-See Electrical Section

31	Sensor, Light	.3	89121-30010	\$213.75
32	Switch, Parking Aid	.2	84490-58020	\$56.67
33	Switch, Headlamp Washer	.2	84150-47010	\$65.76
34	Switch, Mirror	.2	84870-34010	\$135.72
35	Control, A/C	.6	55900-47030	\$479.25
36	Panel, Lower			
	Aqua	R	.4 55433-47020-G0	\$106.00
		L	.4 55432-47050-G0	\$94.11
	Gray	R	.4 55433-47020-B0	\$106.00
		L	.4 55432-47050-B0	\$94.11
	Greige	R	.4 55433-47020-E0	\$106.00
		L	.4 55432-47050-E0	\$94.11
37	Panel, Lower Inst			
	Aqua	.5	55406-47090-G0	\$118.23
	Gray	.5	55406-47090-B0	\$118.23
	Greige	.5	55406-47090-E0	\$118.23
38	Holder, Cup			
	Aqua	.4	55620-47030-G0	\$82.91
	Gray	.4	55620-47030-B0	\$82.91
	Greige	.4	55620-47030-E0	\$82.91
39	Bracket, Inst Mtg		55376-47040	\$33.84
40	Box Assy, Upper Glove			
	Aqua	.6	55511-47040-G0	\$247.67
	Gray	.6	55511-47040-B0	\$247.67
	Greige	.6	55511-47040-E0	\$247.67
41	Latch, Glove Box (b)			
	Upper			
	Aqua	.2	55560-47080-G0	\$18.83
	Gray	.2	55560-47080-B0	\$18.83
	Greige	.2	55560-47080-E0	\$18.83
42	Bumper (2) (b)			
	Upper		55557-53030	\$1.83

2010 Toyota Prius V Sedan

(b) Included w/Upper Glove Box Assy

43 Box Assy, Lower Glove (c)

Lower		
Aqua	.4 55550-47080-G0	\$334.78
Gray	.4 55550-47080-B0	\$334.78
Greige	.4 55550-47080-E0	\$334.78

44 Door (c)

Aqua	.2 55551-47080-G0	\$156.59
Gray	.2 55551-47080-B0	\$156.59
Greige	.2 55551-47080-E0	\$156.59

45 Bumper (2) (c)

Lower	55557-53030	\$1.83
-------	-------------	--------

(c) Included w/Lower Glove Box Assy

46 Latch, Glove Box

Lower		
Aqua	.2 55560-47060-G0	\$18.83
Gray	.2 55560-47060-B0	\$18.83
Greige	.2 55560-47060-E0	\$18.83

47 Panel, Switch	.5 55404-47020	\$98.66
------------------	----------------	---------

48 Switch, Multi-Function	.5 84012-47020	\$91.65
---------------------------	----------------	---------

49 Switch, Push Button Starting	.4 89611-33010	\$220.72
---------------------------------	----------------	----------

50 Switch, Trans Selector	.3 84718-47020	\$54.93
---------------------------	----------------	---------

51 Switch, Seat Heater	.2 84751-52030	\$78.37
------------------------	----------------	---------

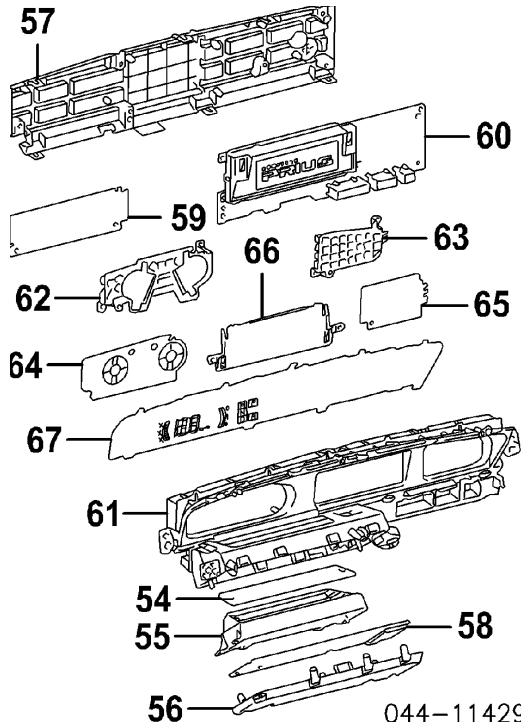
Switch, Sunroof	.3 84895-47010	\$65.76
-----------------	----------------	---------

52 Switch, Rheostat	.3 84119-42020	\$87.11
---------------------	----------------	---------

53 Switch, Trip	.2 84975-47050	\$100.74
-----------------	----------------	----------

Cover, Combination Meter

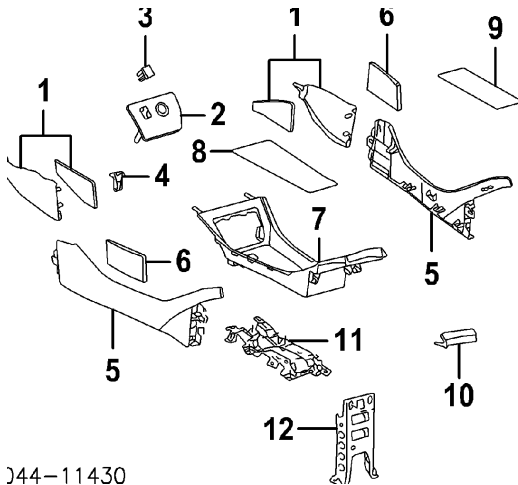
2010 Toyota Prius V Sedan



54	No. 1	#1.4	83821-47340	\$15.80
55	No. 2	#1.4	83822-47360	\$24.66
56	No. 3	#1.4	83821-47360	\$15.80
57	No. 4	#1.4	83823-47360	\$16.35
Plate, Combination Meter				
58	No. 1	#1.4	83861-47360	\$76.62
59	No. 2	#1.4	83862-47360	\$28.75
60	No. 3	#1.4	83861-47370	\$143.41
Case, Combination Meter				
61	No. 1	#1.4	83843-47360	\$125.58
62	No. 2	#1.4	83842-47360	\$24.66
63	No. 3	#1.4	83841-47360	\$13.23
Lens, Combination Meter				
64	No. 1	#1.4	83831-47360	\$5.49
65	No. 2	#1.4	83831-47380	\$3.37
66	No. 3	#1.4	83833-47340	\$12.29
67	Reflector, Meter	#1.4	83857-47340	\$62.62
#R&R Complete				

CENTER CONSOLE

Procedure 14



J44-11430

R&I Center Console Assy

#1.3

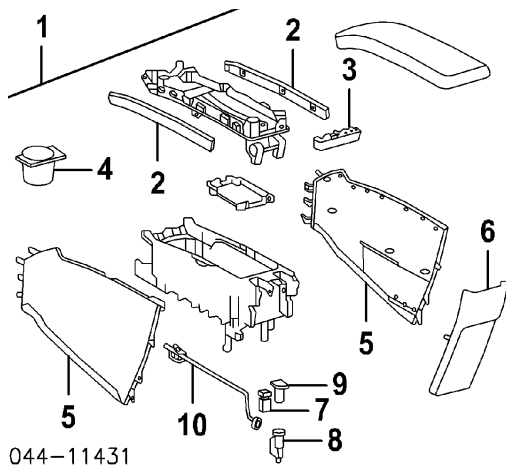
#Includes R&I Rear Console Assy

1 Insert, Console Front			
Aqua	R	.3 58816-47020-G0	\$38.84
	L	.3 58817-47020-G0	\$32.12
Gray	R	.3 58816-47020-B0	\$38.84
	L	.3 58817-47020-B0	\$32.12
Greige	R	.3 58816-47020-E0	\$38.84
	L	.3 58817-47020-E0	\$32.12
2 Cover, Console Box			
Aqua		.5 58818-47040-G0	\$22.24
Gray		.5 58818-47040-B0	\$22.24
Greige		.5 58818-47040-E0	\$22.24
3 Plug, Switch Hole			
		55539-28160-C0	\$5.26
4 Bracket, Console			
	R	55388-0R010	\$4.26
	L	55389-12040	\$8.29
5 Box, Console			
Aqua	R	.3 58811-47010-G0	\$43.18
	L	.3 58812-47010-G0	\$42.96
Gray	R	.3 58811-47010-B0	\$43.18
	L	.3 58812-47010-B0	\$42.96
Greige	R	.3 58811-47010-E0	\$43.18
	L	.3 58812-47010-E0	\$42.96
6 Cushion, Console			
	R	55448-47070	\$10.15
	L	55448-47070	\$10.15
7 Compartment, Console			
Aqua		.7 58823-47020-G0	\$103.89
Gray		.7 58823-47020-B0	\$103.89

2010 Toyota Prius V Sedan

Greige	.7	58823-47020-E0	\$103.89
8 Mat		58916-47010-B0	\$14.86
9 Carpet, Box		58815-47030	\$4.80
10 Panel, End		58821-47020	\$10.60
Bracket, Mounting			
11 Lower		58994-47010	\$38.13
12 Upper		58996-47020	\$27.29

REAR CONSOLE



044-11431				
R&I Rear Console Assy		.6		
1 Console Assy, Rear (a)				
Gray		.8	58901-47090-B2	\$668.49
Greige		.8	58901-47090-E2	\$668.49
(a) Order by Application				
2 Insert, Console¶				
Aqua	R	.2	58966-47010-G0	\$22.75
	L	.2	58969-47010-G0	\$22.75
Gray	R	.2	58966-47010-B0	\$22.75
	L	.2	58969-47010-B0	\$22.75
Greige	R	.2	58966-47010-E0	\$22.75
	L	.2	58969-47010-E0	\$22.75
3 Cover, Rear¶				
Aqua		.3	58915-47010-G0	\$13.23
Gray		.3	58915-47010-B0	\$13.23
Greige		.3	58915-47010-E0	\$13.23
4 Holder, Cup¶			58925-47010	\$32.92
5 Panel, Side Trim¶				
Aqua	R	.4	58911-47030-G0	\$61.30
	L	.4	58912-47040-G0	\$61.30
Gray	R	.4	58911-47030-B0	\$61.30
	L	.4	58912-47040-B0	\$61.30
Greige	R	.4	58911-47030-E0	\$61.30
	L	.4	58912-47040-E0	\$61.30
6 Panel, Rear Finish¶				
Aqua		.3	58923-47020-G0	\$76.97
Gray		.3	58923-47020-B0	\$76.97
Greige		.3	58923-47020-E0	\$76.97
7 Jack, Auxiliary¶			86190-48010	\$121.03
8 Socket, Power¶			85530-42010	\$36.04

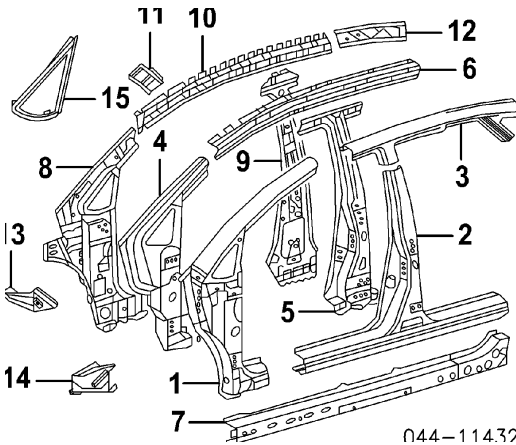
2010 Toyota Prius V Sedan

9	Cover, Power Outlet	85535-06020	\$10.83
10	Harness, Console Wiring	82390-47010	\$23.01
	Included w/Rear Console Assy		

ROCKER/PILLARS/FLOOR

Procedures 14, 15 and 28

SHEET METAL



Refinish Door Opening Assy	R	3.4
	L	3.4
Refinish Outer Hinge Pillar	R	1.4
	L	1.4
Refinish Center Outer Pillar	R	2.4
	L	2.4
Refinish Center Pillar	R	1.0
	L	1.0
Refinish Rocker Panel	R	2.0
	L	2.0
Refinish Outer Roof Rail	R	1.2
	L	1.2
Refinish Roof Rail Outside	R	#1.6
	L	#1.6
#Included in Refinish Door Opening Assy		
R&I Pillar Glass	R	#1.4
	L	#1.4
#Includes R&R Pillar Garnish & Upper Cowl Trim Panel		
Section Center Pillar	R	8.0
	L	8.0
Section Rocker Panel	R	#11.0
	L	#11.0

2010 Toyota Prius V Sedan

#w/Quarter Panel Removed Deduct 1.6

Add to R&R

w/Side Curtain Air Bag

R #1.2

L #1.2

#w/Headliner Removed

Add to R&R w/Side Air Bag Sensor

R #.4

L #.4

#w/Center Pillar Trim Removed

NOTE: Refer to Manufacturer's Service Manual for sectioning procedures.

NOTE: Manufacturer advises foam fillers have been utilized within panels in this section. Refer to vehicle body/service repair manuals for recommended replacement and safety precautions.

1	Pillar, Outer Hinge (HSS) (I)	R	#11.5	61131-47030	\$194.86
		L	#11.5	61132-47030	\$194.86

(I) Add'l Non-Reusable Parts &/or Dealer Contact Required

#Includes R&R Pillar Glass

2	Pillar, Center Outer (UHSS)	R	#13.8	61311-47030	\$165.10
		L	#13.8	61312-47020	\$165.10

#w/Quarter Panel Removed Deduct 1.6

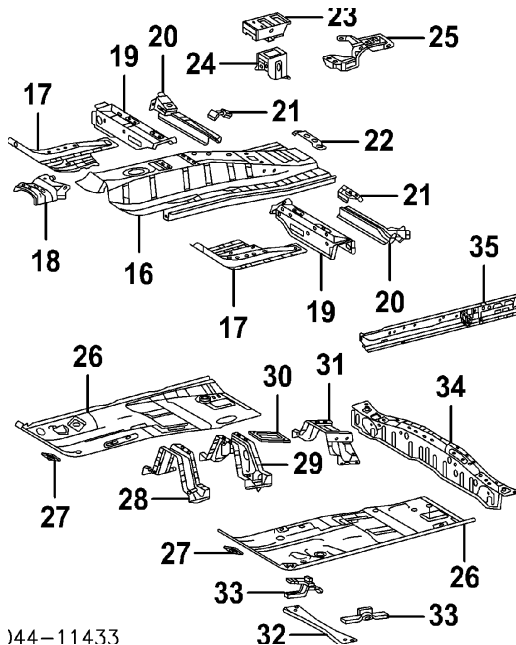
Striker, Latch-See Front Door Section

3	Rail, Outer Roof (HSS)	R	5.5	61217-47010	\$146.93
		L	5.5	61218-47010	\$146.93
4	Reinforcement, Hinge Pillar (HSS)	R	2.5	61108-47040	\$243.47
		L	2.5	61109-47030	\$243.47
5	Reinforcement, Center Pillar (HSS)	R	1.5	61037-47040	\$293.14
		L	1.5	61038-47030	\$293.14
6	Reinforcement, Roof Rail (HSS)	R	1.5	61201-47020	\$249.07
		L	1.5	61202-47010	\$249.07
7	Reinforcement, Rocker Panel (HSS)	R	2.0	61403-47030	\$279.17
		L	2.0	61404-47030	\$279.17
8	Pillar, Inner Hinge (HSS)	R	2.5	61023-47050	\$194.86

2010 Toyota Prius V Sedan

	L	2.5	61024-47060	\$194.86
9 Pillar, Center Inner (HSS)	R	1.5	61303-47010	\$165.10
	L	1.5	61304-47010	\$165.10
10 Rail, Inner Roof (HSS)	R	1.5	61203-47010	\$132.24
	L	1.5	61204-47010	\$132.24
11 Reinf, Front Pillar (HSS)	R	.5	61175-47020	\$29.47
	L	.5	61176-47020	\$29.47
12 Rail, Rear Inner (HSS)	R	1.0	61205-47010	\$76.25
	L	1.0	61206-47010	\$76.25
13 Reinf, Cowl (HSS)	R	.5	61103-47030	\$59.13
	L	.5	61104-47030	\$64.36
14 Support, Cowl (HSS)	R	.5	61106-47010	\$79.77
	L	.5	61107-47010	\$79.39
15 Glass, Pillar				
Toyota	R	#1.2	62110-47021	\$91.76
	L	#1.2	62120-47021	\$91.76
NAGS	R	#1.2	N.A.	
	L	#1.2	N.A.	

#Includes R&R Pillar Garnish & Upper Cowl Trim Panel

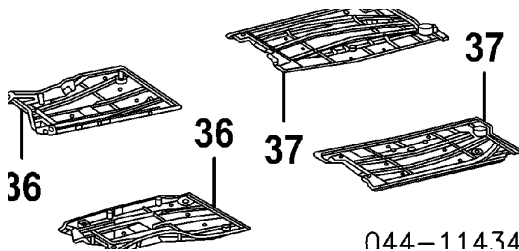


544-114.33

16 Panel, Front Center (HSS)			58113-47900	\$629.67
17 Reinf, Upper Floor	R		57043-12020	\$184.00
	L		57044-12020	\$184.00
18 Bracket, Mounting			58173-72010	\$74.85

2010 Toyota Prius V Sedan

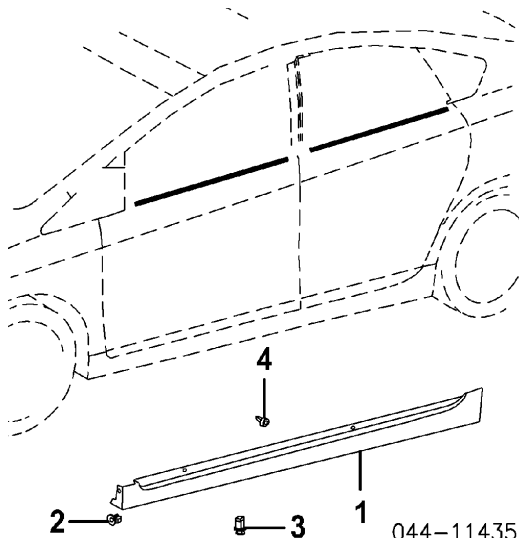
19 Crossmember, Floor Frt (HSS)	R	57051-12060	\$99.69
	L	57052-12010	\$99.69
20 Crossmember, Floor Rear (HSS)	R	57053-12010	\$108.43
	L	57054-12010	\$108.43
21 Brace, Floor	R	58251-12040	\$29.49
	L	58252-12040	\$29.35
22 Bracket, Brake Cable Reinf, Seat Belt		58253-12060	\$15.58
23 Upper		57807-47010	\$65.08
24 Lower		57809-47010	\$60.53
25 Cover, Sidemember	R	57627-47010	\$61.22
	L	57628-12130	\$40.93
26 Pan, Front Floor	R	58111-47903	\$360.30
	L	58112-47900	\$360.30
27 Cover, Hole	R	55129-12040	\$7.86
	L	55139-12050	\$7.86
28 Bracket, Exhaust Mtg		58203-12070	\$75.22
29 Reinf, Center Floor		57509-12061	\$91.31
30 Reinf, Parking Brake		58171-12120	\$29.41
31 Reinf, Belt Anchor		57805-12150	\$93.06
32 Brace, Front		57533-12010	\$55.62
33 Bracket, Front Support	R	57531-12010	\$29.81
	L	57532-12010	\$29.81
		57407-12101	\$263.42
34 Crossmember, Center (HSS)			
35 Member, Floor	R	57401-47050	\$189.94
	L	57402-47070	\$189.94



36 Cover, Front Floor	R	58165-47020	\$79.05
	L	58166-47020	\$82.20
37 Cover, Rear Floor	R	58167-47030	\$91.65
	L	58168-47020	\$93.40

EXTERIOR TRIM

2010 Toyota Prius V Sedan



Refinish Rocker Moulding

R	1.2		
L	1.2		
R	.5		
L	.5		
R	.5	75851-47900	\$363.82
L	.5	75852-47900	\$363.82

R&I Rocker Moulding

1 Moulding, Rocker (P)

(P) Paint to Match

2 Nut, Expanding

R	90189-06006	\$1.20
L	90189-06006	\$1.20

Retainer, Moulding

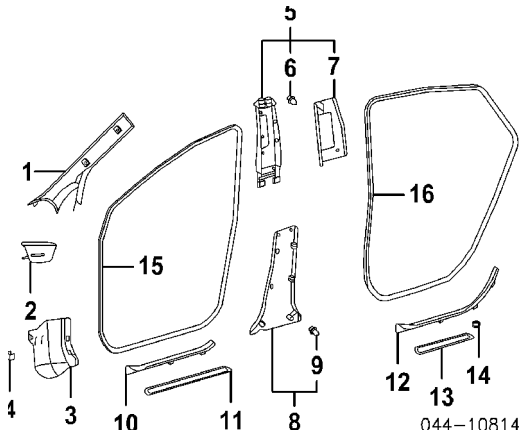
3 Outer, (4/Side)

R	76923-47010	\$5.34
L	76923-47010	\$5.34

4 Inner, (9/Side)

R	75867-AA010	\$4.66
L	75867-AA010	\$4.66

INTERIOR TRIM



2010 Toyota Prius V Sedan

1 Garnish Assy, Pillar-See Windshield Section

Panel, Cowl Trim

2 Upper

G Type	R	.2	62218-47050-B0	\$54.93
	L	.2	62219-47050-B0	\$54.93
S Type	R	.2	62218-47040-B1	\$37.44
	L	.2	62219-47040-B1	\$37.44

3 Lower

Aqua	R	#.3	62111-47060-G0	\$62.96
	L	#.3	62112-47090-G0	\$60.87
Gray	R	#.3	62111-47060-B0	\$62.96
	L	#.3	62112-47090-B0	\$60.87
Greige	R	#.3	62111-47060-E0	\$62.96
	L	#.3	62112-47090-E0	\$60.87

#Includes R&R Front Inner Scuff Plate

4 Clip, Cowl Trim (2/Side)

R	90467-10167	\$1.11
L	90467-10167	\$1.11

5 Panel Assy, Upper Center Trim

G Type	R	#.8	62410-47070-B1	\$123.12
	L	#.8	62420-47070-B1	\$123.12
S Type	R	#.8	62410-47060-B1	\$85.00
	L	#.8	62420-47060-B1	\$85.00

#Includes R&R Lower Center Trim Panel Assy

6 Clip, Upper Trim Panel¶

R	90467-10167	\$1.11
L	90467-10167	\$1.11

7 Cover, Seat Belt Adjuster¶

R	73023-53020-B0	\$20.98
L	73024-53020-B0	\$20.98

¶Included w/Upper Center Trim Panel Assy

8 Panel Assy, Lower Center Trim

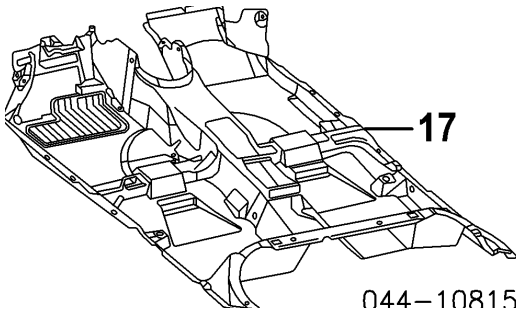
Aqua	R	#.5	62413-47040-G0	\$155.33
	L	#.5	62414-47040-G0	\$155.33
Gray	R	#.5	62413-47040-B0	\$155.33
	L	#.5	62414-47040-B0	\$155.33
Greige	R	#.5	62413-47040-E0	\$155.33
	L	#.5	62414-47040-E0	\$155.33

#Includes R&R Inner Scuff Plates

2010 Toyota Prius V Sedan

9 Clip, Lower Trim Panel (2/Side) (a)	R		90467-10161	\$1.06
	L		90467-10161	\$1.06
(a) Included w/Lower Center Trim Panel Assy				
10 Plate, Inner Front Scuff				
Aqua	R	.2	67913-47040-G0	\$82.57
	L	.2	67914-47040-G0	\$82.57
Gray	R	.2	67913-47040-B0	\$82.57
	L	.2	67914-47040-B0	\$82.57
Greige	R	.2	67913-47040-E0	\$82.57
	L	.2	67914-47040-E0	\$82.57
11 Plate, Outer Front Scuff	R	.2	67911-47030	\$40.24
	L	.2	67911-47030	\$40.24
12 Plate, Inner Rear Scuff				
Aqua	R	#.2	67917-47040-G0	\$82.57
	L	#.2	67918-47040-G0	\$82.57
Gray	R	#.2	67917-47040-B0	\$82.57
	L	#.2	67918-47040-B0	\$82.57
Greige	R	#.2	67917-47040-E0	\$82.57
	L	#.2	67918-47040-E0	\$82.57
#Included in R&R Side Trim Panel				
13 Plate, Outer Rear Scuff	R	.2	67915-47030	\$37.78
	L	.2	67916-47020	\$37.78
14 Clip, Rear Plate	R		62566-32010	\$3.57
	L		62566-32010	\$3.57
15 Weatherstrip, Front Door (On Body)				
Light Gray	R	.5	62311-47030-B0	\$69.75
	L	.5	62312-47030-B0	\$69.75
Medium Gray	R	.5	62311-47030-B1	\$69.75
	L	.5	62312-47030-B1	\$69.75
16 Weatherstrip, Rear Door (On Body)				
Light Gray	R	.5	62331-47030-B0	\$57.88
	L	.5	62332-47030-B0	\$57.88
Medium Gray	R	.5	62331-47030-B1	\$57.88
	L	.5	62332-47030-B1	\$57.88

2010 Toyota Prius V Sedan



17

044-10815

17 Carpet, Front

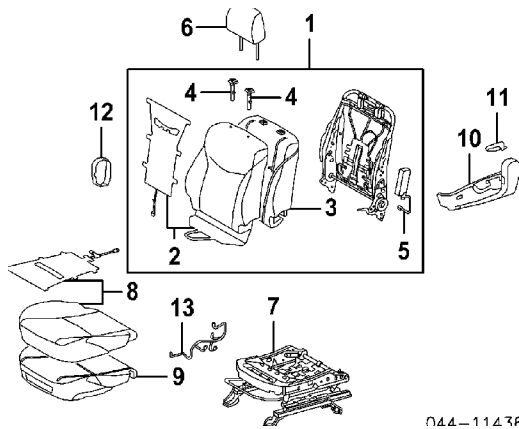
Aqua

Gray

Greige

58510-47220-G1	\$604.41
58510-47220-B1	\$604.41
58510-47220-E1	\$604.41

FRONT SEAT
PASSENGER SIDE



R&I Front Seat Assy

.4

1	Back Assy, Seat (a)-See Air Bag System Section¶			
2	Cover, Seat Back			
	Cloth	#1.0	71073-47200-B0	\$388.95
	Leather	#1.0	71073-47230-B0	\$877.94
3	Cushion, Seat Back (a)¶	#1.0	71551-47110	\$135.38
#R&R Complete, w/Seat Assy Removed, Includes R&R Headrest				
4	Guide, Headrest (a)¶			
	Locking		71930-47020-B0	\$13.26
	Non-Locking		71931-47020-B0	\$8.00
¶Gray listed, Order by Application				
5	Module, Seat Air Bag (a)-See Air Bag System Section			
(a) Included w/Seat Back Assy				
6	Headrest¶			
	Cloth	.2	71910-47130-B0	\$528.21
	Leather	.2	71910-47110-B0	\$388.28
¶Gray listed, Order by Application				
7	Track, Seat		71610-47070	\$454.76
8	Cover, Seat Bottom¶			
	Cloth	#.8	71071-47230-B0	\$266.72
	Leather	#.8	71071-47270-B0	\$714.03

2010 Toyota Prius V Sedan

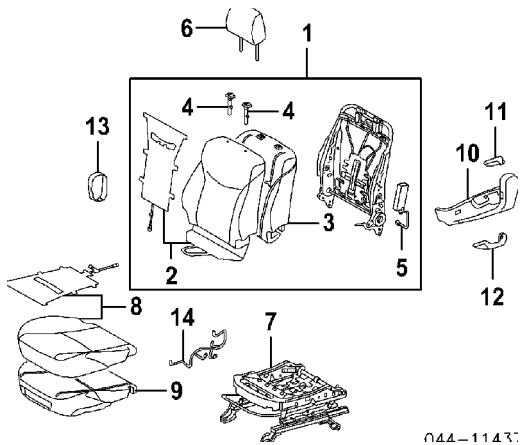
¶Gray listed, Order by Application

9 Cushion, Seat Bottom	#.8	71511-47100	\$141.33
#R&R Complete, w/Seat Assy Removed			
10 Shield, Outer Cushion¶		71811-47080-B0	\$82.20
11 Handle, Recliner¶		72525-47010-B0	\$10.97
12 Cover, Inner Recliner¶		71861-47060-B0	\$43.73

¶Gray listed, Order by Application

13 Harness, Seat		82191-47030	\$58.05
------------------	--	-------------	---------

DRIVER SIDE



R&I Seat Assy

.4

1 Back Assy, Seat-See Air Bag System Section			
2 Cover, Seat Back (a)			
Cloth¶	#1.0	71074-47100-B0	\$388.95
Leather	#1.0	71074-47130-B0	\$877.94
3 Cushion, Seat Back (a)¶	#1.0	71552-47090	\$135.38

#R&R Complete, w/Seat Assy Removed, Includes R&R Headrest

4 Guide, Headrest (a)¶			
Locking		71930-47020-B0	\$13.26
Non-Locking		71931-47020-B0	\$8.00

¶Gray listed, Order by Application

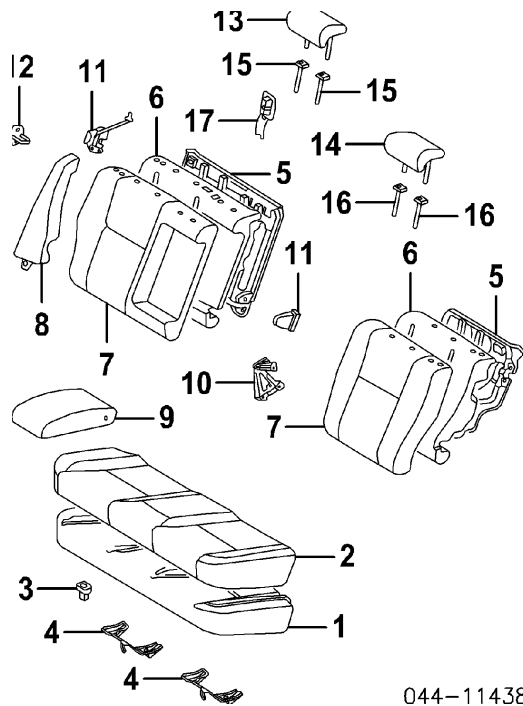
5 Module, Seat Air Bag (a)-See Air Bag System Section	
---	--

2010 Toyota Prius V Sedan

(a) Included w/Seat Back Assy

6	Headrest¶			
	Cloth	.2	71910-47130-B0	\$528.21
	Leather	.2	71910-47110-B0	\$388.28
	¶Gray listed, Order by Application			
7	Track, Seat		71620-47060	\$521.23
8	Cover, Seat Bottom¶			
	Cloth	#.8	71072-47190-B1	\$266.72
	Leather	#.8	71072-47230-B1	\$714.03
	¶Gray listed, Order by Application			
	Switch, Seat		84920-60050-E2	\$62.96
9	Cushion, Seat Bottom	#.8	71512-47070	\$173.85
	#R&R Complete, w/Seat Assy Removed			
10	Shield, Outer Cushion¶		71812-47070-B0	\$82.20
11	Handle, Recliner¶		72526-47010-B0	\$10.97
			72495-47010-B0	\$50.73
12	Handle, Vertical Adj Switch¶			
13	Cover, Inner Recliner¶		71862-47040-B0	\$39.18
	¶Gray listed, Order by Application			
14	Harness, Seat			

REAR SEAT



044-1143E

R&I Seat Assy

R&I Seat Back Assy

		.6
R	#.4	
L	#.4	

#Includes R&I Seat Cushion Assy

R&I Seat Cushion Assy

		.2	
1	Pad, Seat Cushion	#1.0	71503-47050 \$384.80
2	Cover, Seat Cushion¶		
	Cloth	#1.0	71075-47130-B2 \$433.43
	Leather	#1.0	71075-47150-B1 \$800.14

¶Gray listed, Order by Application

#w/Seat Cushion Assy Removed

3	Hook, Seat Cushion	R		72693-12080	\$3.23
		L		72693-12080	\$3.23
4	Bracket, Seat Anchor	R		73705-47040	\$28.78
		L		73706-47050	\$28.78
5	Frame, Seat Back	R	#1.2	71017-47100	\$182.97
		L	#1.0	71018-47060	\$129.09
6	Pad, Seat Back	R	#1.2	71651-47130	\$195.88
		L	#1.0	71652-47070	\$141.33
7	Cover, Seat Back¶				

2010 Toyota Prius V Sedan

Cloth	R	#1.2	71077-47250-B4	\$362.02
	L	#1.0	71078-47170-B4	\$265.89
Leather	R	#1.2	71077-47310-B5	\$663.25
	L	#1.0	71078-47200-B5	\$486.21

#R&R One Side Complete, w/Seat Back Assy Removed, Includes R&R Headrest

8 Frame, Side Bolster¶

Cloth	R	#.2	71540-47040-B2	\$181.28
	L	#.2	71550-47040-B2	\$181.28
Leather	R	#.2	71540-47060-B2	\$271.94
	L	#.2	71550-47060-B2	\$271.94

#Included in R&I Seat Back Assy, w/Seat Cushion Assy Removed

9 Armrest, Center¶

Cloth		#.2	72830-47080-B1	\$405.32
Leather		#.2	72830-47150-B0	\$846.87

¶Gray listed, Order by Application

#w/Seat Assy Removed

10 Hinge, Center Seat Back			71305-47030	\$65.42
11 Latch, Seat Back	R		72630-47030	\$32.12
	L		72640-47030	\$32.12
12 Striker, Latch	R	.2	72601-47030	\$40.93
	L	.2	72602-47020	\$40.93
13 Headrest, Outer¶				
Cloth	R	#.2	71940-47130-B1	\$388.28
	L	#.2	71940-47130-B1	\$388.28
Leather	R	#.2	71940-47160-B1	\$528.21
	L	#.2	71940-47160-B1	\$528.21
14 Headrest, Center¶				
Cloth		#.2	71960-47070-B1	\$309.95
Leather		#.2	71960-47090-B1	\$419.78

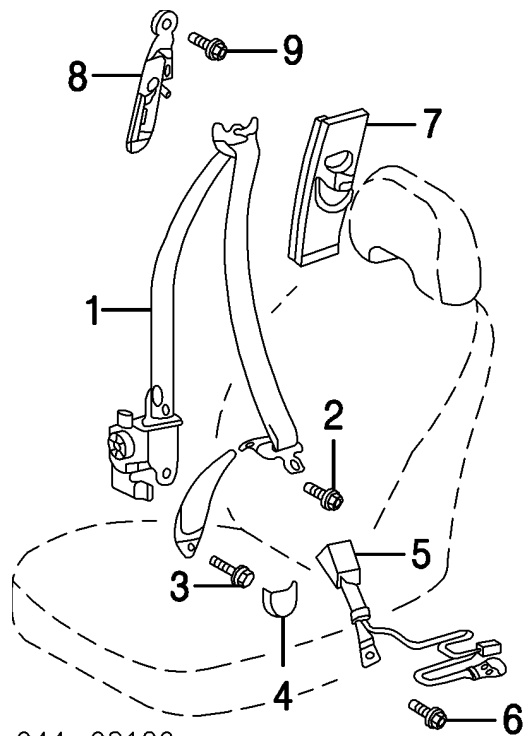
¶Gray listed, Order by Application

#Included in R&R Seat Back

15 Guide, Outer Headrest (2/Side)	R		71955-47010-B0	\$34.70
	L		71955-47010-B0	\$34.70
16 Guide, Center				
Locking			71930-47020-B0	\$13.26
Non-Locking			71931-47020-B0	\$8.00
17 Cover, Trim	R		72996-47030-B0	\$10.09
	L		72996-47030-B0	\$10.09

SEAT BELTS

FRONT



044-08120

1 Belt, Front Seat

Aqua

R #1.0 73210-47120-B3 \$217.91

L #1.0 73220-47090-B3 \$136.79

Gray

R #1.0 73210-47120-B1 \$217.91

L #1.0 73220-47090-B1 \$136.79

Greige

R #1.0 73210-47120-B2 \$217.91

L #1.0 73220-47090-B2 \$136.79

#Includes R&R Upper Center Trim Panel

Pretensioner, Seat Belt-Serviced w/Front Seat Belt

Bolt, Mounting

2 No. 1

R 90105-A0082 \$0.63

L 90105-A0082 \$0.63

3 No. 2

R 90109-A0033 \$3.45

L 90109-A0033 \$3.45

4 Cap, Seat Belt

Gray

R 73233-60020-B0 \$6.97

L 73233-60020-B0 \$6.97

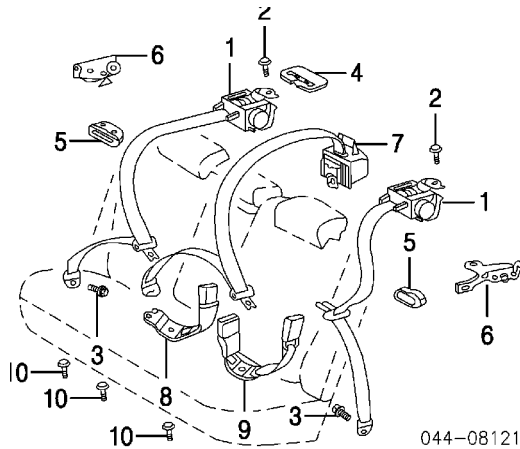
Greige

R 73233-60020-E1 \$6.29

2010 Toyota Prius V Sedan

	L		73233-60020-E1	\$6.29
5 Buckle, Seat Belt				
Aqua	R	#.2	73240-47080-G0	\$45.49
	L	#.2	73230-47140-G0	\$45.49
Gray	R	#.2	73240-47080-B0	\$45.49
	L	#.2	73230-47140-B0	\$45.49
Greige	R	#.2	73240-47080-E0	\$45.49
	L	#.2	73230-47140-E0	\$45.49
#w/Seat Assy Removed				
6 Bolt, Mounting	R		90080-17195	\$2.33
	L		90080-17195	\$2.33
7 Cover, Seat Belt Adjuster-See Rocker/Pillars/Floor Section				
8 Adjuster, Seat Belt	R		73200-53010	\$52.42
	L		73200-53010	\$52.42
9 Screw, Mounting	R		90105-A0186	\$1.12
	L		90105-A0186	\$1.12

REAR



1 Belt, Outer Seat				
Aqua	R	#.3	73360-47060-G0	\$136.79
	L	#.3	73360-47060-G0	\$136.79
Gray	R	#.3	73360-47060-B0	\$136.79
	L	#.3	73360-47060-B0	\$136.79
Greige	R	#.3	73360-47060-E0	\$136.79
	L	#.3	73360-47060-E0	\$136.79

#w/Package Tray Trim & Rear Seat Assy Removed

2 Bolt, Mounting	R		90105-T0063	\$1.12
	L		90105-T0063	\$1.12
3 Bolt, Lower Mounting	R		90105-T0063	\$1.12

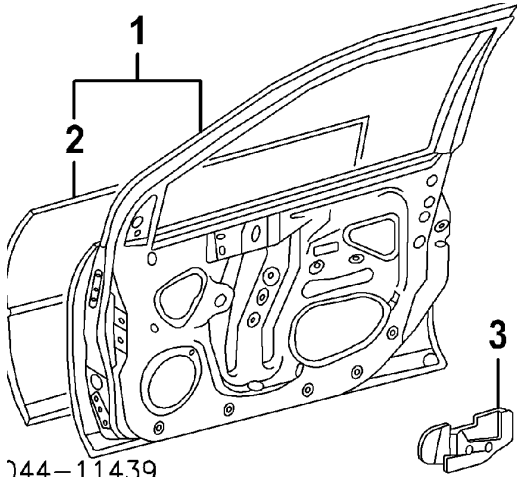
2010 Toyota Prius V Sedan

	L		90105-T0063	\$1.12
4 Cover, Belt				
Aqua	R		73373-12020-G0	\$6.29
Gray	R		73373-12020-B3	\$6.29
Greige	R		73373-12020-E0	\$7.60
5 Guide, Seat Belt				
Aqua	R		73343-47010-G0	\$12.49
	L		73344-47010-G0	\$12.49
Gray	R		73343-47010-B0	\$12.49
	L		73344-47010-B0	\$12.49
Greige	R		73343-47010-E0	\$12.49
	L		73344-47010-E0	\$12.49
6 Bracket, Belt	R		73015-47030	\$8.60
	L		73016-47020	\$8.32
7 Belt, Center Seat				
Aqua		#.3	73350-47030-G0	\$136.79
Gray		#.3	73350-47030-B0	\$136.79
Greige		#.3	73350-47030-E0	\$136.79
Buckle, Seat Belt				
8 Inner Right				
Aqua	R	#.3	73380-47020-G1	\$21.79
Gray	R	#.3	73380-47020-B1	\$21.79
Greige	R	#.3	73380-47020-E1	\$21.79
9 Inner Left				
Aqua	L	#.3	73480-47050-G1	\$35.45
Gray	L	#.3	73480-47050-B1	\$35.45
Greige	L	#.3	73480-47050-E1	\$35.45
#w/Seat Assy Removed				
10 Bolt, Mounting (3)			90105-T0063	\$1.12

FRONT DOOR

Procedures 16 and 28

SHEET METAL



744-114.39

Refinish Door Outside

R	2.1
L	2.2

Add for Jambs & Interior

R	1.0
L	1.0

Add for Jambs

R	.5
L	.5

R&I Door Assy

R	1.0
L	1.0

NOTE: Manufacturer Advises that the Reinforcement Beam is High Strength Steel and should never be repaired.

1	Shell Assy, Door (HSS)	R	#5.2	67001-47080	\$570.31
		L	#5.2	67002-47080	\$570.31

#Includes R&I/R&R Rear View Mirror Assy

2	Panel, Door Repair (HSS)¶	R	#7.5	67111-47030	\$259.74
		L	#7.5	67112-47030	\$259.74

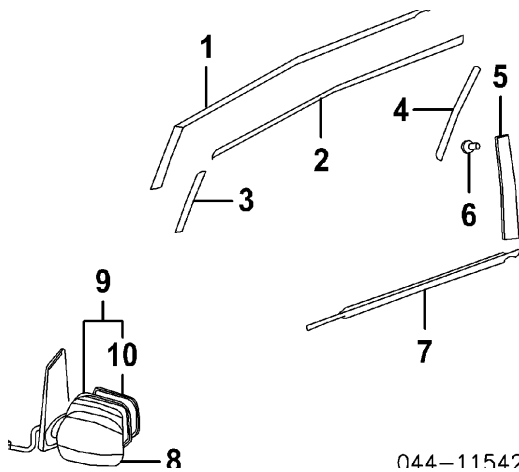
¶Included w/Door Shell Assy

#Includes R&I/R&R Rear View Mirror Assy & Door Glass

3	Cushion, Door	R	.2	67923-47050	\$20.78
		L	.2	67924-47040	\$20.78

EXTERIOR TRIM

2010 Toyota Prius V Sedan



Refinish Rear View Mirror Cover

R .5

L .5

R&I Outer Belt Moulding

R #1.0

L #1.0

#Includes R&R Door Glass

R&I Rear View Mirror Assy

R #.7

L #.7

#Includes R&I Trim Panel Assy

Tape, Black-Out

1	Upper	R	.2	75921-47020	\$24.41
		L	.2	75922-47020	\$24.41
2	Lower	R	.2	75985-47020	\$15.49
		L	.2	75986-47020	\$15.49
3	Front	R	.2	75975-47020	\$7.77
		L	.2	75976-47020	\$7.77
4	Rear	R	.2	75965-47010	\$11.09
		L	.2	75966-47010	\$11.09
5	Moulding, Rear	R	#.2	75755-47020	\$28.75
		L	#.2	75756-47020	\$28.75
#w/Belt Moulding Removed					
6	Clip, Mounting (2/Side)	R		75792-47010	\$0.80
		L		75792-47010	\$0.80
7	Moulding, Outer Belt	R	#.2	75710-47020	\$37.44
		L	#.2	75720-47020	\$37.44

#w/Door Glass Removed

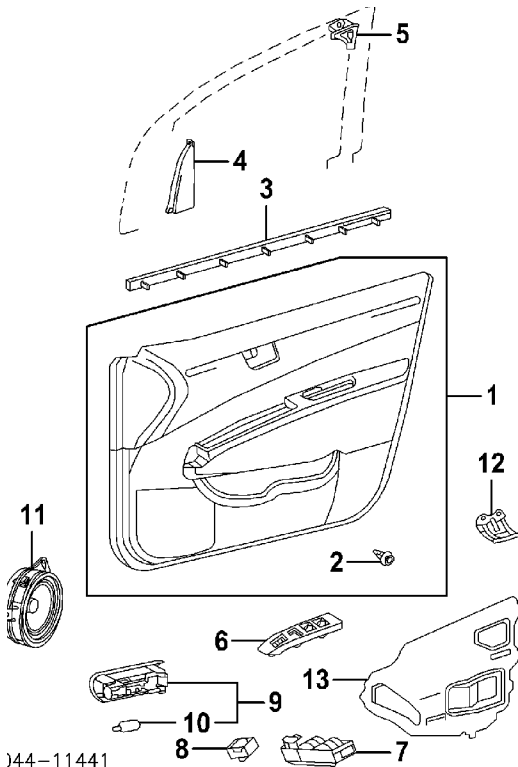
8	Cover, Rear View Mirror				
		Beige, (Code 4T8)			
		R	.2	87915-47020-E0	\$55.62
		L	.2	87945-47020-E0	\$55.62
		R	.2	87915-47020-C0	\$55.62

2010 Toyota Prius V Sedan

	L	.2	87945-47020-C0	\$55.62
Dark Blue, (Code 8T5)	R	.2	87915-47020-J0	\$55.62
	L	.2	87945-47020-J0	\$55.62
Gray, (Code 8V1)	R	.2	87915-47020-J1	\$55.62
	L	.2	87945-47020-J1	\$55.62
Red, (Code 3R3)	R	.2	87915-47020-D0	\$55.62
	L	.2	87945-47020-D0	\$55.62
Silver, (Code 1F7)	R	.2	87915-47020-B0	\$55.62
	L	.2	87945-47020-B0	\$55.62
White, (Code 040)	R	.2	87915-47020-A0	\$55.62
	L	.2	87945-47020-A0	\$55.62
9 Mirror Assy, Rear View	R	#.3	87910-47180	\$222.62
	L	#.3	87940-47180	\$222.62
#w/Trim Panel Removed				
10 Glass, Mirror (a)	R	.2	87931-47180	\$66.42
	L	.2	87961-47180	\$66.42

(a) Included w/Rear View Mirror Assy

INTERIOR TRIM



J44-11441

R&I Trim Panel Assy

R	.4
L	.4

2010 Toyota Prius V Sedan

NOTE: All Parts in this section are included in R&R Trim Panel Assy unless noted otherwise.

1 Panel Assy, Trim

Cloth

Aqua	R	.6	67610-47210-G0	\$349.81
	L	.6	67620-47220-G0	\$349.81
Gray	R	.6	67610-47210-B0	\$349.81
	L	.6	67620-47220-B0	\$349.81
Greige	R	.6	67610-47210-E0	\$349.81
	L	.6	67620-47220-E0	\$349.81

Leather

Aqua	R	.6	67610-47200-G0	\$419.78
	L	.6	67620-47230-G0	\$419.78
Gray	R	.6	67610-47200-B0	\$419.78
	L	.6	67620-47230-B0	\$419.78
Greige	R	.6	67610-47200-E0	\$419.78
	L	.6	67620-47230-E0	\$419.78

2 Clip, Trim Panel¶

Upper	R		67771-47010	\$3.03
	L		67771-47010	\$3.03
Lower, (8/Side)	R		90467-A0005	\$1.14
	L		90467-A0005	\$1.14

¶Included w/Trim Panel Assy

3 Moulding, Inner Belt

R	#.2	68171-47040	\$27.10
L	#.2	68172-47040	\$27.10

#w/Trim Panel Assy Removed

4 Cover, Mirror Hole

R		87963-47010	\$13.23
L		87964-47010	\$13.23

5 Garnish, Door Frame

R		67663-48010	\$2.86
L		67664-48010	\$2.86

6 Bezel, Switch

R	#.2	74231-47120	\$24.49
L	#.2	74232-47090	\$21.92

7 Switch, Master Window

L	#.2	84040-06020	\$437.27
---	-----	-------------	----------

8 Switch, Power Window

R	#.2	84810-06090	\$72.42
---	-----	-------------	---------

Switch, Door Lock

R	#.2	84930-12250	\$60.87
---	-----	-------------	---------

#R&R One Side Complete

9 Lamp Assy, Courtesy

R	.2	81230-47010	\$17.33
L	.2	81230-47010	\$17.33

10 Bulb, Lamp (a)

R		90981-12010	\$2.46
L		90981-12010	\$2.46

(a) Included w/Courtesy Lamp Assy

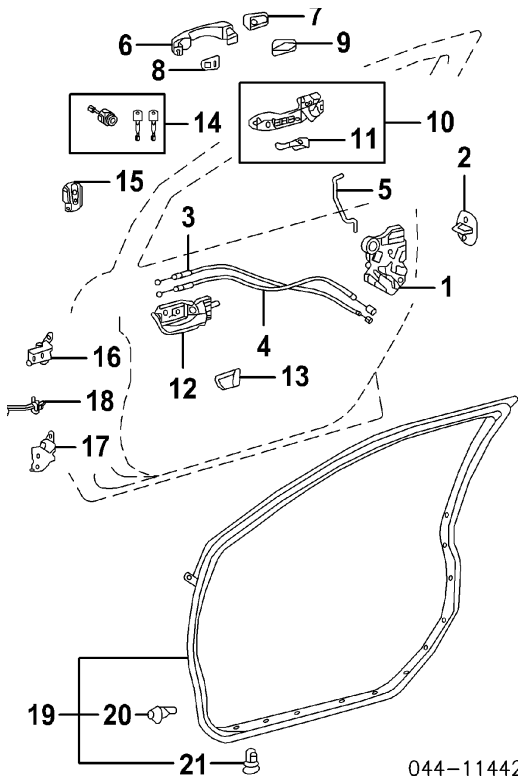
11 Speaker, Door

2010 Toyota Prius V Sedan

Std Sound System	R	#.2	86160-58240	\$114.55
	L	#.2	86160-58240	\$114.55
Premium Sound System	R	#.2	86160-0WD10	\$332.25
	L	#.2	86160-0WD10	\$332.25
12 Bracket, Trim Panel	R		67625-47020	\$9.63
	L		67625-47020	\$9.63
13 Shield, Moisture	R	#	67831-47070	\$13.40
	L	#	67832-47060	\$13.40

#w/Trim Panel Removed, Not Included in R&R Trim Panel

HARDWARE



Refinish Outside Handle Assy	R	.5		
	L	.5		
Refinish Upper Door Hinge	R	.5		
	L	.5		
Refinish Lower Door Hinge	R	.5		
	L	.5		
R&I Outside Handle Assy	R	#.7		
	L	#.7		

2010 Toyota Prius V Sedan

#Includes R&I Trim Panel Assy

1 Latch, Door	R	#.3	69030-47060	\$311.66
	L	#.3	69040-47060	\$311.66

#w/Trim Panel Assy Removed

2 Striker, Latch	R	.2	69410-33010	\$21.61
	L	.2	69410-33010	\$21.61
3 Cable, Upper	R		69750-47040	\$21.92
	L		69750-47040	\$21.92
4 Cable, Lower	R		69710-47030	\$19.49
	L		69710-47030	\$19.49
5 Rod, Lock	R		69311-47040	\$8.55
	L		69312-47040	\$8.55

6 Handle, Outside

w/Smart Entry System

Beige, (Code 4T8)	R	#.3	69210-74030-E1	\$199.06
	L	#.3	69210-74030-E1	\$199.06
Black, (Code 202)	R	#.3	69210-74030-C0	\$199.06
	L	#.3	69210-74030-C0	\$199.06
Dark Blue, (Code 8T5)	R	#.3	69210-74030-J1	\$199.06
	L	#.3	69210-74030-J1	\$199.06
Gray, (Code 8V1)	R	#.3	69210-74030-J3	\$199.06
	L	#.3	69210-74030-J3	\$199.06
Red, (Code 3R3)	R	#.3	69210-74030-D0	\$199.06
	L	#.3	69210-74030-D0	\$199.06
Silver, (Code 1F7)	R	#.3	69210-74030-B0	\$199.06
	L	#.3	69210-74030-B0	\$199.06
White, (Code 070)	R	#.3	69210-74030-A0	\$199.06
	L	#.3	69210-74030-A0	\$199.06

w/o Smart Entry System

Beige, (Code 4T8)	R	#.3	69211-74020-E1	\$37.78
	L	#.3	69211-74020-E1	\$37.78
Black, (Code 202)	R	#.3	69211-74020-C0	\$37.78
	L	#.3	69211-74020-C0	\$37.78
Dark Blue, (Code 8T5)	R	#.3	69211-74020-J1	\$37.78
	L	#.3	69211-74020-J1	\$37.78
Gray, (Code 8V1)	R	#.3	69211-74020-J3	\$37.78
	L	#.3	69211-74020-J3	\$37.78
Red, (Code 3R3)	R	#.3	69211-74020-D0	\$37.78
	L	#.3	69211-74020-D0	\$37.78
Silver, (Code 1F7)	R	#.3	69211-74020-B0	\$37.78
	L	#.3	69211-74020-B0	\$37.78
White, (Code 070)	R	#.3	69211-74020-A0	\$37.78
	L	#.3	69211-74020-A0	\$37.78

7 Cover, Handle

2010 Toyota Prius V Sedan

Beige, (Code 4T8)	R	#.3	69250-74010-E0	\$16.98
	L	#.3	69217-74010-E1	\$7.54
Black, (Code 202)	R	#.3	69250-74010-C0	\$16.98
	L	#.3	69217-74010-C0	\$7.52
Dark Blue, (Code 8T5)	R	#.3	69250-74010-J0	\$16.98
	L	#.3	69217-74010-J1	\$7.52
Gray, (Code 8V1)	R	#.3	69250-74010-J2	\$16.98
	L	#.3	69217-74010-J3	\$7.54
Red, (Code 3R3)	R	#.3	69250-74010-D0	\$16.98
	L	#.3	69217-74010-D0	\$7.52
Silver, (Code 1F7)	R	#.3	69250-74010-B0	\$16.98
	L	#.3	69217-74010-B0	\$7.54
White, (Code 070)	R	#.3	69250-74010-A1	\$16.98
	L	#.3	69217-74010-A0	\$7.54
8 Pad, Front Handle	R	#.3	69241-30111	\$8.29
	L	#.3	69241-30111	\$8.29
9 Pad, Rear Handle	R	#.3	69242-30091	\$8.29
	L	#.3	69242-30091	\$8.29
#R&R One Side Complete, w/Trim Panel Assy Removed				
10 Frame Assy, Outside Handle	R	#.5	69201-30071	\$99.34
	L	#.5	69202-30061	\$99.34
#Includes R&I/R&R Outside Handle, w/Trim Panel Assy Removed				
11 Clip, Snap (a)	R		69293-12030	\$2.46
	L		69293-12040	\$2.46
(a) Included w/Outside Handle Frame Assy				
12 Handle, Inside				
Black	R	#.2	69205-47040-C0	\$37.78
	L	#.2	69206-47040-C0	\$37.78
Greige	R	#.2	69205-47040-E0	\$37.78
	L	#.2	69206-47040-E0	\$37.78
#w/Trim Panel Assy Removed				
13 Bezel, Handle				
Gray	R		69283-47010-B2	\$9.63
	L		69284-47010-B2	\$9.63
Greige	R		69283-47010-E0	\$9.63
	L		69284-47010-E0	\$9.63
14 Cylinder, Door Lock	L	#.3	69005-47120	\$143.07

2010 Toyota Prius V Sedan

#Included in R&I/R&R Outside Handle Assy, w/Trim Panel Assy Removed

15 Transmitter, Keyless Entry				
w/Sunroof		#.2	89904-47150	\$242.38
w/o Sunroof		#.2	89904-47230	\$242.38

#w/Trim Panel Assy Removed

16 Hinge, Upper Door	R	#.2	68710-12151	\$43.04
	L	#.2	68720-12151	\$43.04
17 Hinge, Lower Door	R	#.2	68730-02080	\$48.61
	L	#.2	68740-02080	\$48.61

#w/Door Removed

18 Check, Door	R	#.2	68610-47020	\$80.79
	L	#.2	68610-47020	\$80.79

#w/Speaker Removed

19 Weatherstrip Assy, Door (On Door)	R	.4	67861-47030	\$42.82
	L	.4	67862-47030	\$42.82

20 Clip, Weatherstrip (b)¶				
No. 1	R		67867-52030	\$2.60
	L		67867-52030	\$2.60
No. 2	R		90467-04034	\$0.80
	L		90467-04034	\$0.80

¶As Required

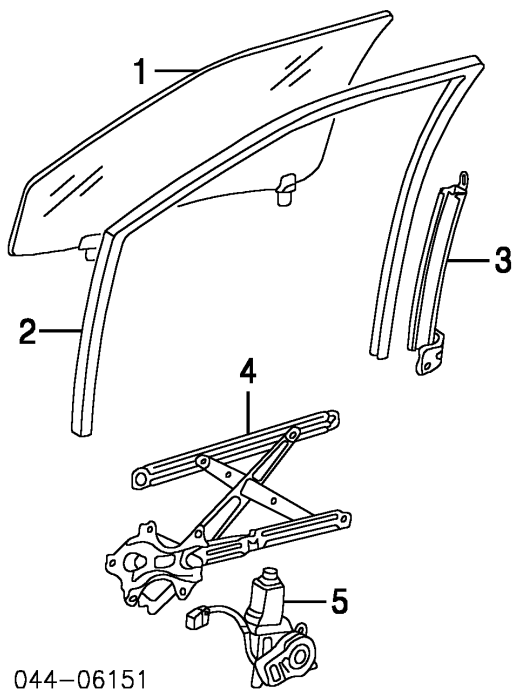
21 Retainer, Weatherstrip (15/Side) (b)	R		67867-12150	\$2.60
	L		67867-12150	\$2.60

(b) Included w/Door Weatherstrip Assy

Harness, Wiring	R		82151-47330	\$288.65
	L		82152-47330	\$288.65

GLASS & PARTS

2010 Toyota Prius V Sedan



044-06151

1 Glass, Front Door

Toyota

G Type

S Type

NAGS

2 Run, Glass

3 Frame, Rear Lower

#w/Door Glass Removed

4 Regulator

5 Motor, Regulator

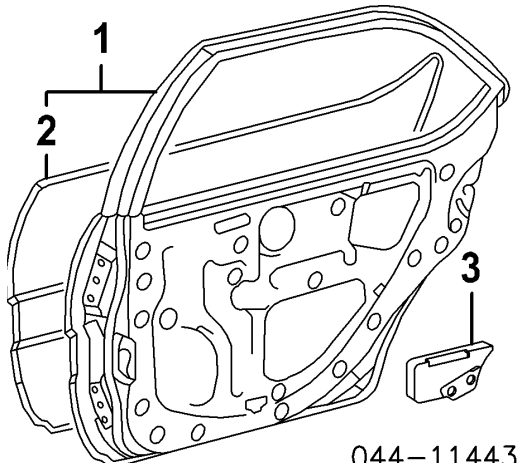
R	.8	68101-47081	
L	.8	68102-47081	
R	.8	68101-47071	
L	.8	68102-47071	
R	.8	N.A.	
L	.8	N.A.	
R	#.2	68141-47030	\$62.62
L	#.2	68151-47030	\$62.62
R	#.2	67403-47030	\$45.81
L	#.2	67404-47030	\$39.87
R	#1.4	69801-52070	\$93.49
L	#1.4	69802-52070	\$93.49
R	#1.4	85710-30400	\$475.48
L	#1.4	85720-30340	\$377.79

#R&R One Side Complete, Includes R&R Door Glass

REAR DOOR

Procedures 16 and 28

SHEET METAL



Refinish Door Outside

R	2.0
L	2.0

Add for Jamb & Interior

R	1.0
L	1.0

Add for Jamb

R	.5
L	.5

R&I Door Assy

R	1.0
L	1.0

NOTE: Manufacturer Advises that the Reinforcement Beam is High Strength Steel and should never be repaired.

1	Shell Assy, Door (HSS)	R	5.0	67003-47090	\$503.91
		L	5.0	67004-47090	\$503.91
2	Panel, Door Repair (HSS)¶	R	#7.2	67113-47030	\$221.30
		L	#7.2	67114-47030	\$221.30

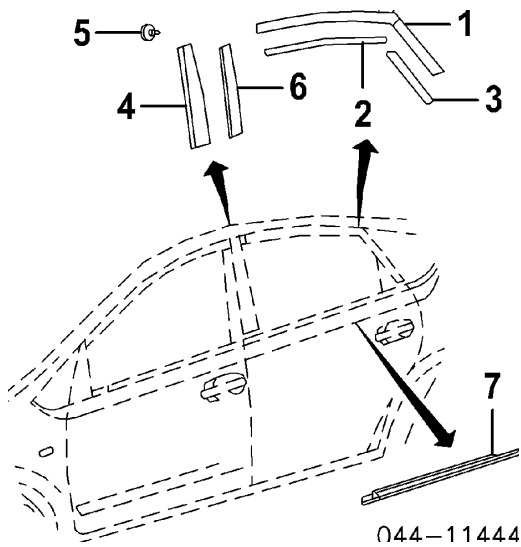
¶Included w/Door Shell Assy

#Includes R&R Door Glass

3	Pad, Door	R	.2	67897-47010	\$17.95
		L	.2	67898-47010	\$17.95

EXTERIOR TRIM

2010 Toyota Prius V Sedan



R&I Outer Belt Moulding

R	#1.0
L	#1.0

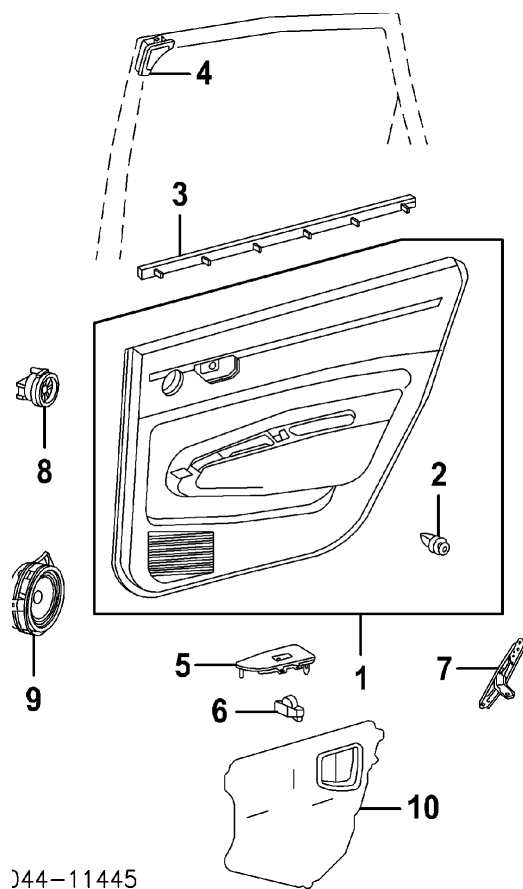
#Includes R&R Door Glass
Tape, Black-Out

1	Upper	R	.2	75923-47020	\$19.95
		L	.2	75924-47020	\$19.95
2	Lower	R	.2	75987-47020	\$26.52
		L	.2	75988-47020	\$26.52
3	Rear	R	.2	75979-47020	\$13.29
		L	.2	75989-47020	\$17.69
4	Moulding, Front (Adhesive)	R	#.2	75761-47020	\$37.44
		L	#.2	75762-47020	\$37.44
#w/Belt Moulding Removed					
5	Clip, Mounting (2/Side)	R		75792-47010	\$0.80
		L		75792-47010	\$0.80
6	Tape, Front Black-Out	R	.2	75977-47020	\$22.12
		L	.2	75978-47020	\$13.29
7	Moulding, Outer Belt	R	#.2	75730-47020	\$37.44
		L	#.2	75740-47020	\$37.44

#w/Door Glass Removed

INTERIOR TRIM

2010 Toyota Prius V Sedan



J44-11445

R&I Trim Panel Assy

R	.4
L	.4

NOTE: All Parts in this section are included in R&R Trim Panel Assy unless noted otherwise.

1 Panel Assy, Trim

Cloth

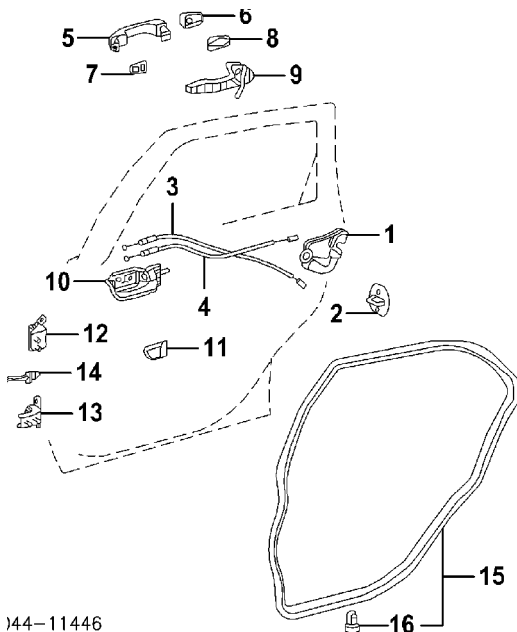
Aqua	R	.6	67630-47260-G0	\$317.29
	L	.6	67640-47260-G0	\$317.29
Gray	R	.6	67630-47260-B0	\$317.29
	L	.6	67640-47260-B0	\$317.29
Greige	R	.6	67630-47260-E0	\$317.29
	L	.6	67640-47260-E0	\$317.29
Leather				
Aqua	R	.6	67630-47280-G1	\$521.23
	L	.6	67640-47280-G1	\$521.23
Gray	R	.6	67630-47280-B1	\$521.23
	L	.6	67640-47280-B1	\$521.23
Greige	R	.6	67630-47280-E1	\$521.23
	L	.6	67640-47280-E1	\$521.23

2010 Toyota Prius V Sedan

2 Clip, Trim Panel (8/Side)¶	R		90467-A0005	\$1.14
	L		90467-A0005	\$1.14
¶Included w/Trim Panel Assy				
3 Moulding, Inner Belt	R	#.2	68173-47040	\$23.24
	L	#.2	68174-47040	\$23.24
#w/Trim Panel Removed				
4 Garnish, Door Frame	R		67673-48010	\$2.86
	L		67674-48010	\$2.86
5 Bezel, Switch	R	#.2	74271-47060	\$21.92
	L	#.2	74272-47060	\$21.92
6 Switch, Power Window	R	#.2	84810-06090	\$72.42
	L	#.2	84810-06090	\$72.42
#R&R One Side Complete				
7 Bracket, Trim Panel	R		67627-47010	\$15.49
	L		67628-47010	\$15.49
8 Speaker, Tweeter (a)	R	#.2	86160-47130	\$82.39
	L	#.2	86160-47130	\$82.39
9 Speaker, Lower (a)	R	#.2	86160-22A10	\$91.97
	L	#.2	86160-22A10	\$91.97
(a) Order by Application				
10 Shield, Moisture	R	#	67841-47050	\$14.20
	L	#	67842-47040	\$14.20

#w/Trim Panel Removed, Not Included in R&R Trim Panel

HARDWARE



2010 Toyota Prius V Sedan

Refinish Outside Handle Assy	R	.5		
	L	.5		
Refinish Upper Door Hinge	R	.5		
	L	.5		
Refinish Lower Door Hinge	R	.5		
	L	.5		
R&I Outside Handle	R	#.7		
	L	#.7		
#Includes R&I Trim Panel Assy				
1 Latch, Door	R	#.3	69050-47070	\$286.85
	L	#.3	69060-47070	\$286.85
#w/Trim Panel Assy Removed				
2 Striker, Latch	R	.2	69410-33010	\$21.61
	L	.2	69410-33010	\$21.61
Cable, Lock				
3 Upper	R		69730-47030	\$19.49
	L		69730-47030	\$19.49
4 Lower	R		69770-47040	\$21.92
	L		69770-47040	\$21.92
5 Handle, Outside				
Beige, (Code 4T8)	R	#.3	69211-74020-E1	\$37.78
	L	#.3	69211-74020-E1	\$37.78
Black, (Code 202)	R	#.3	69211-74020-C0	\$37.78
	L	#.3	69211-74020-C0	\$37.78
Dark Blue, (Code 8T5)	R	#.3	69211-74020-J1	\$37.78
	L	#.3	69211-74020-J1	\$37.78
Gray, (Code 8V1)	R	#.3	69211-74020-J3	\$37.78
	L	#.3	69211-74020-J3	\$37.78
Red, (Code 3R3)	R	#.3	69211-74020-D0	\$37.78
	L	#.3	69211-74020-D0	\$37.78
Silver, (Code 1F7)	R	#.3	69211-74020-B0	\$37.78
	L	#.3	69211-74020-B0	\$37.78
White, (Code 070)	R	#.3	69211-74020-A0	\$37.78
	L	#.3	69211-74020-A0	\$37.78
6 Cover, Handle				
Beige, (Code 4T8)	R	#.3	69227-47010-E0	\$16.98
	L	#.3	69227-47010-E0	\$16.98
Black, (Code 202)	R	#.3	69227-47010-C0	\$16.98
	L	#.3	69227-47010-C0	\$16.98
Dark Blue, (Code 8T5)	R	#.3	69227-47010-J0	\$16.98
	L	#.3	69227-47010-J0	\$16.98
Gray, (Code 8V1)	R	#.3	69227-47010-J2	\$16.98
	L	#.3	69227-47010-J2	\$16.98

2010 Toyota Prius V Sedan

Red, (Code 3R3)	R	#.3	69227-47010-D0	\$16.98	
	L	#.3	69227-47010-D0	\$16.98	
Silver, (Code 1F7)	R	#.3	69227-47010-B0	\$16.98	
	L	#.3	69227-47010-B0	\$16.98	
White, (Code 070)	R	#.3	69227-47010-A1	\$16.98	
	L	#.3	69227-47010-A1	\$16.98	
7 Pad, Front Handle	R	#.3	69241-30111	\$8.29	
	L	#.3	69241-30111	\$8.29	
8 Pad, Rear Handle	R	#.3	69242-30091	\$8.29	
	L	#.3	69242-30091	\$8.29	
#R&R One Side Complete, w/Trim Panel Assy Removed					
9 Frame, Handle	R	#.5	69203-47020	\$74.51	
	L	#.5	69204-47020	\$74.51	
#Includes R&I/R&R Outside Handle, w/Trim Panel Assy Removed					
10 Handle, Inside					
	Black	R	#.2	69205-47040-C0	\$37.78
		L	#.2	69206-47040-C0	\$37.78
	Greige	R	#.2	69205-47040-E0	\$37.78
		L	#.2	69206-47040-E0	\$37.78
	#w/Trim Panel Assy Removed				
11 Bezel, Handle					
	Gray	R		69283-47010-B2	\$9.63
		L		69284-47010-B2	\$9.63
	Greige	R		69283-47010-E0	\$9.63
		L		69284-47010-E0	\$9.63
	12 Hinge, Upper Door	R	#.2	68750-20121	\$39.18
L		#.2	68760-20121	\$39.18	
13 Hinge, Lower Door	R	#.2	68770-52031	\$39.18	
	L	#.2	68780-52031	\$39.18	
#w/Door Removed					
14 Check, Door	R	#.2	68630-47030	\$80.79	
	L	#.2	68630-47030	\$80.79	
#w/Speaker Removed					
15 Weatherstrip Assy, Door (On Door)	R		67871-47030	\$42.82	
	L		67872-47030	\$42.82	
			67867-12150		
16 Retainer, Weatherstrip (17/Side)¶	R			\$2.60	
	L		67867-12150	\$2.60	

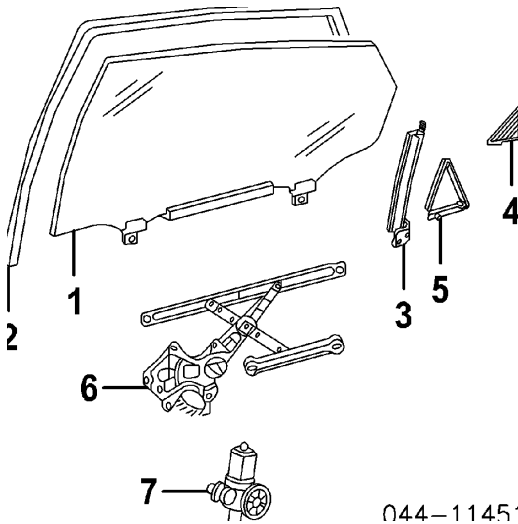
2010 Toyota Prius V Sedan

¶Included w/Door Weatherstrip Assy

Harness, Wiring (a)	R	82153-47140	\$165.79
	L	82154-47140	\$165.79

(a) Order by Application

GLASS & PARTS



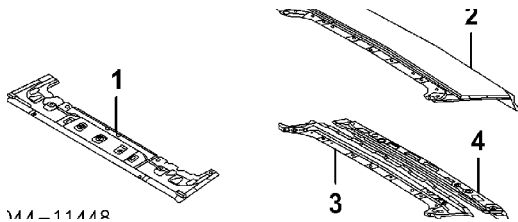
1 Glass, Rear Door				
Toyota	R	.8	68103-47051	
	L	.8	68104-47051	
NAGS	R	.8	N.A.	
	L	.8	N.A.	
2 Run, Glass	R	#.2	68142-47030	\$54.56
	L	#.2	68152-47030	\$54.56
3 Guide, Rear	R	#.2	67407-47030	\$39.87
	L	#.2	67408-47030	\$39.87
#w/Door Glass Removed				
4 Cover, Protection	R		67836-12040	\$8.63
	L		67836-12040	\$8.63
5 Seal, Channel	R		67487-47040	\$52.47
	L		67488-47040	\$52.47
6 Regulator	R	#1.4	69801-52070	\$93.49
	L	#1.4	69802-52070	\$93.49
7 Motor, Regulator	R	#1.4	85710-72020	\$475.48
	L	#1.4	85720-72020	\$475.48

#R&R One Side Complete, Includes R&R Door Glass

ROOF

Procedures 17 and 28

SHEET METAL
W/SUNROOF



Refinish Roof Outside

2.0

Add to R&R Roof

R&I/R&R Antenna

.2

R&I/R&R Side Curtain Air Bags

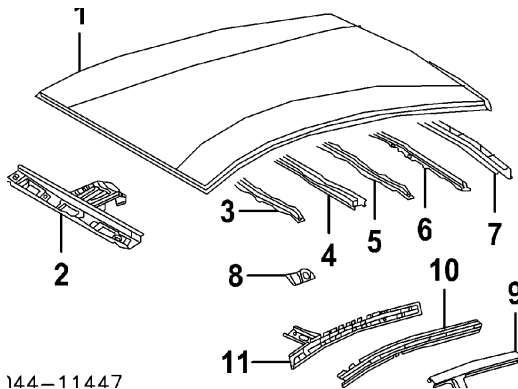
2.4

1 Panel, Header	1.5	63102-47040	\$135.74
2 Panel, Roof	#13.5	63111-47040	\$264.19

#Includes R&I Sunroof Panel Assy, Does Not Include R&R Quarter Glass or Windshield

3 Reinf, Rear Roof	1.0	63144-47030	\$92.00
4 Frame, Upper Back Window	1.5	63105-47020	\$127.69

SHEET METAL
W/O SUNROOF



Refinish Roof Outside

3.0

Add to R&R Roof

R&I/R&R Antenna

.2

R&I/R&R Side Curtain Air Bags

2.4

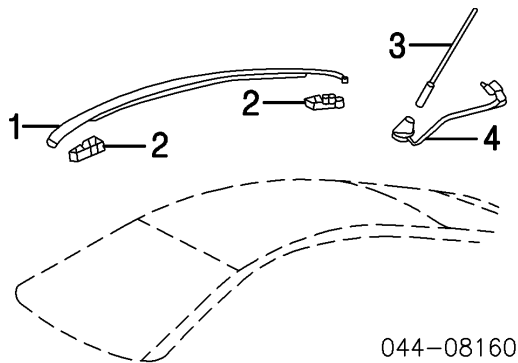
1 Panel, Roof	#19.0	63111-47030	\$583.64
---------------	-------	-------------	----------

#Does Not Include R&R Quarter Glass

2010 Toyota Prius V Sedan

2 Panel, Header		1.5	63102-47900	\$95.19
3 Reinforcement, Front		1.0	63142-47020	\$34.81
Reinforcement, Center				
4 No. 1		1.0	63103-47010	\$147.27
5 No. 2		1.0	63143-47030	\$32.38
6 Reinforcement, Rear		1.0	63144-47020	\$33.47
			63105-47020	
7 Frame, Upper Back Window		1.5		\$127.69
8 Reinforcement, Side Rail	R	.4	61247-47020	\$15.92
	L	.4	61247-47020	\$15.92
9 Rail, Outer Roof-See Rocker/Pillars/Floor Section				
10 Reinforcement, Roof Rail-See Rocker/Pillars/Floor Section				
11 Rail, Inner Roof-See Rocker/Pillars/Floor Section				

EXTERIOR TRIM



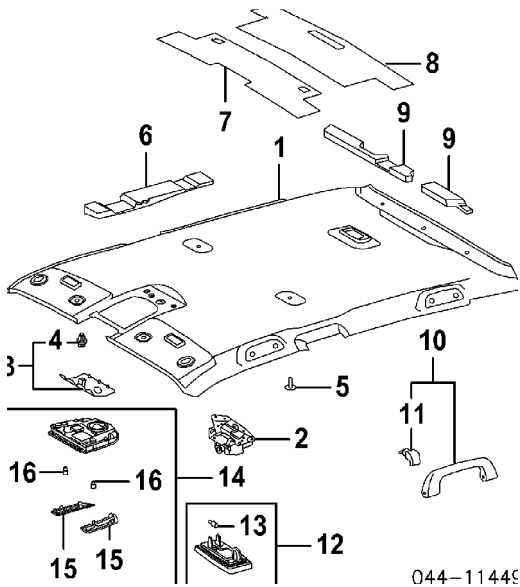
R&I Roof Drip Moulding	R	.4		
	L	.4		
1 Moulding, Roof Drip				
Chrome	R	.4	75555-47030	\$41.98
	L	.4	75556-47030	\$41.98
Black	R	.4	75555-47041-B1	\$24.69
	L	.4	75556-47041-B1	\$24.69
Gray	R	.4	75555-47041-B0	\$24.69
	L	.4	75556-47041-B0	\$24.69
2 Clip, Drip Moulding (2/Side)	R		75561-33030	\$1.14
	L		75561-33030	\$1.14
3 Antenna, Telephone-See Electrical Section				

2010 Toyota Prius V Sedan

4 Amplifier, Antenna-See Electrical Section

Antenna, Navigation-See Electrical Section

INTERIOR TRIM



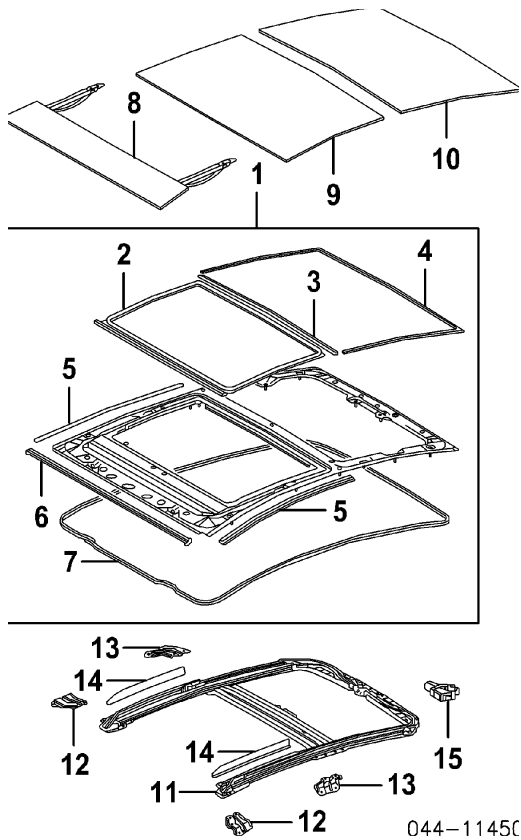
R&I Headliner
w/Sunroof
w/o Sunroof

		4.5		
		4.5		
1 Headliner				
w/Sunroof		4.5	63310-47090-B0	\$1,073.94
w/o Sunroof		4.5	63310-47080-B0	\$1,007.46
2 Camera, Lane Departure			86460-47010	\$1,595.34
Switch, Sunroof-See Instrument Panel Section				
3 Moulding Assy, Roof		.2	75631-47020-B0	\$52.47
4 Clip, Mounting (2)¶			90467-A0005	\$1.14
¶Included w/Roof Moulding Assy				
5 Clip, Headliner (5)			90467-05164-B0	\$0.77
6 Plate, Retainer	R		63367-47020	\$34.98
	L		63368-47020	\$34.98
Pad, Headliner				
7 Front			63342-47050	\$30.27
8 Center			63343-47040	\$33.10
9 Rear				
w/Sunroof	R		63351-47030	\$46.87

2010 Toyota Prius V Sedan

	L	63352-47030	\$20.12
w/o Sunroof	R	63351-47020	\$46.87
	L	63352-47020	\$19.98
10 Grip Assy, Assist			
Front	R	.2 74610-02071-B0	\$20.12
	L	.2 74610-02071-B0	\$20.12
Rear	R	.2 74610-02081-B0	\$24.55
	L	.2 74610-02081-B0	\$24.55
		74612-52030-B1	
11 Cover, Assist Grip (4/Side) (a)	R		\$3.23
(a) Included w/Assist Grip Assy			
12 Lamp Assy, Vanity	R	.2 81340-30100-B0	\$33.76
	L	.2 81340-30100-B0	\$33.76
13 Bulb, Vanity Lamp (b)	R	90981-11062	\$3.17
	L	90981-11062	\$3.17
(b) Included w/Vanity Lamp Assy			
14 Lamp Assy, Map		.2 81260-47150-B0	\$270.89
15 Lens, Map Lamp (c)	R	81265-47070	\$8.23
	L	81266-47070	\$8.23
16 Bulb, Map Lamp (c)	R	00234-00192	\$1.04
	L	00234-00192	\$1.04
(c) Included w/Map Lamp Assy			
Harness, Roof (d)		82171-47110	\$165.79
(d) Order by Application			

SUNROOF



R&I Sunroof Glass	
Front	#1.0
#Includes R&I/R&R Center Sunroof Glass	
Center	#.6
#Includes R&R Side Garnishes	
R&I Sunroof Panel Assy	#.8
#w/Headliner Removed, Not Included in O/H	
O/H Sunroof Frame Assy (Includes R&I)	#2.6
#w/Headliner Removed	
Add to O/H Sunroof Assy	
R&I/R&R Side Curtain Air Bags	2.4

NOTE: All Parts in this section are included in O/H unless noted otherwise.

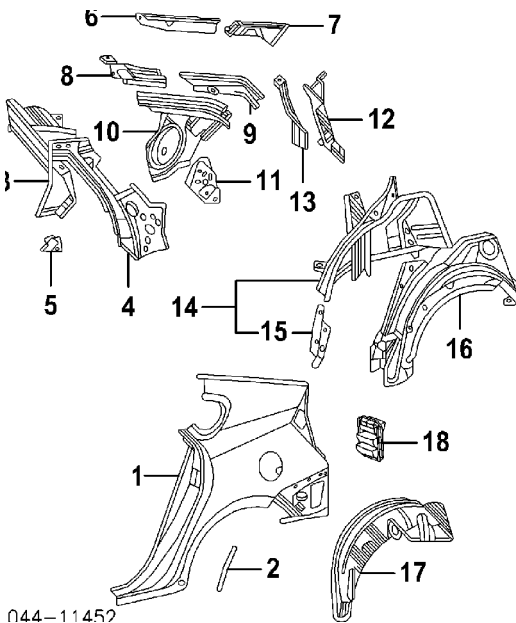
2010 Toyota Prius V Sedan

1	Panel Assy, Sunroof		#2.2	63202-47020	\$668.13
	#w/Sunroof Frame Removed, Not Included in O/H				
	Weatherstrip, Panel (a)¶				
2	Front		#.2	63251-47010	\$32.12
3	Rear		#.2	63254-47010	\$12.21
4	Moulding, Sunroof (a)¶			63216-47010	\$48.99
5	Seal, Side (a)¶	R	#.2	63627-47010	\$12.21
		L	#.2	63627-47010	\$12.21
6	Moulding, Front (a)¶			63215-47010	\$59.82
7	Seal, Glass (a)¶		#.2	63258-47010	\$34.24
	¶Included w/Sunroof Panel Assy				
	(a) Non-Reusable Part				
	#w/Headliner Removed, Not Included in O/H				
8	Glass, Front Sunroof		#1.0	63201-47010	\$479.15
	#Includes R&I/R&R Center Sunroof Glass				
9	Glass, Center Sunroof		#.6	63201-47020	\$879.73
	#Includes R&R Side Garnishes				
10	Glass, Rear Sunroof		#2.2	63210-47010	\$1,585.26
	#Included in R&R Sunroof Panel, w/Headliner Removed, Not Included in O/H				
	Adhesive			N.A.	
11	Frame, Sunroof		#2.6	63202-47010-B0	\$559.70
	#w/Headliner Removed				
	Bracket, Frame				
12	Front	R	#.2	63241-47010	\$19.95
		L	#.2	63242-47010	\$19.95
13	Rear	R	#.2	63243-47010	\$25.41
		L	#.2	63244-47010	\$25.41
	#w/Headliner Removed				
14	Garnish, Side	R	.2	63217-47010	\$17.29
		L	.2	63218-47010	\$17.29
15	Motor, Sunroof		#.3	63260-47010	\$526.32
	#w/Headliner Removed				

QUARTER PANEL

Procedures 20 and 28

SHEET METAL/EXTERIOR TRIM



044-11452

Refinish Quarter Outside	R	2.2
	L	2.2
Add to Edge Panel	R	.5
	L	.5
Add for Pillar	R	.5
	L	.5
Add for Inside	R	.8
	L	.8
Refinish Fuel Door	L	#.5
#Included in Refinish Left Quarter Outside		
Add for Inside		.2
R&R Both Quarter Panels		32.3
R&R Roof & Both Quarter Panels		
w/Sunroof		42.8
w/o Sunroof		48.3
R&R Rear Body Panel & Both Quarter Panels		36.3
R&R Roof, Both Quarter Panels & Rear Body Panel		

2010 Toyota Prius V Sedan

w/Sunroof		46.8
w/o Sunroof		52.3
Add to R&R Quarter Panel		
w/Side Curtain Air Bag	R	#1.2
	L	#1.2

#w/Headliner Removed

NOTE: Refer to Manufacturer's Service Manual for sectioning procedures.

NOTE: Manufacturer advises foam fillers have been utilized within panels in this section. Refer to vehicle body/service repair manuals for recommended replacement and safety precautions.

1 Panel, Outer Quarter	R	#17.0	61601-47080	\$537.73
	L	#17.5	61602-47080	\$537.73

#Deduct 1.5 w/Roof Removed, Deductions Include Common Surfaces & Included Operations

Striker, Latch-See Rear Door Section

2 Protector, Quarter Panel	R	.2	58745-47020	\$11.60
	L	.2	58746-47020	\$11.60
3 Panel, Front Inner Quarter	R	2.5	61733-47020	\$72.76
	L	2.5	61734-47020	\$72.76
4 Panel, Roof Side Outer	R	2.5	61711-47020	\$77.34
	L	2.5	61712-47020	\$77.34
5 Reinf, Striker	R		61691-47010	\$20.49
	L		61692-47010	\$20.49
Ext, Quarter Panel				
6 Front	R	1.0	61623-47010	\$44.78
	L	1.0	61624-47010	\$44.78
7 Rear	R	1.0	61625-47040	\$29.81
	L	1.0	61626-47040	\$29.81
Reinf, Outer Qtr				
8 Front	R	1.0	61713-47020	\$49.67
	L	1.0	61714-47020	\$49.67
9 Rear	R	1.0	61743-47010	\$48.27
	L	1.0	61744-47010	\$48.27
10 Panel, Outer Qtr	R	3.0	61731-47030	\$72.76
	L	3.0	61732-47030	\$72.76
11 Reinf, Belt	R	1.0	61766-47020	\$55.27
	L	1.0	61767-47020	\$55.27
12 Trough, Opening	R	1.0	61621-47030	\$59.47
	L	1.0	61622-47030	\$59.47
13 Reinf, Inner	R	1.0	61737-47020	\$32.44
	L	1.0	61738-47020	\$32.44

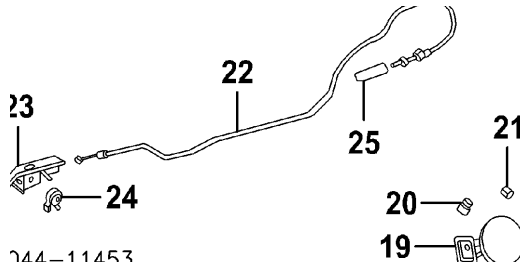
2010 Toyota Prius V Sedan

14 Panel Assy, Inner Wheelhouse (HSS)	R	3.0	61607-47060	\$316.23
	L	3.0	61608-47060	\$316.23
15 Reinf, Inner Wheelhouse¶	R	.5	61673-12040	\$51.41
	L	.5	61674-12070	\$51.79

¶Included w/Inner Wheelhouse Panel Assy

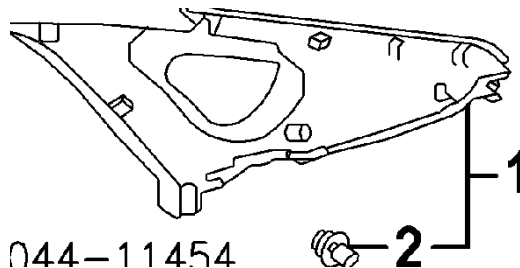
16 Panel, Outer Wheelhouse	R	3.0	61605-47010	\$175.25
	L	3.0	61606-47010	\$175.25
17 Liner, Wheelhouse	R	.4	65637-47021	\$75.56
	L	.4	65638-47021	\$75.56
18 Vent, Air	R	#.2	62940-16060	\$38.13
	L	#.2	62940-16060	\$38.13

#w/Rear Cover Removed



19 Door, Fuel	L	.3	77350-47030	\$54.56
20 Spring, Fuel Door	L		77366-52010	\$0.66
21 Bumper, Fuel Door	L		90541-06070	\$2.21
22 Cable, Fuel Door	L		77035-47050	\$27.95
23 Lever, Fuel Door	L		77306-52040	\$28.52
24 Grommet	L		64648-12020	\$3.12
25 Retainer, Cable	L		77377-52020	\$3.12

INTERIOR TRIM



1 Panel Assy, Quarter Trim	R	#.8	62470-47070-B0	\$137.84
	L	#.8	62480-47050-B0	\$140.27

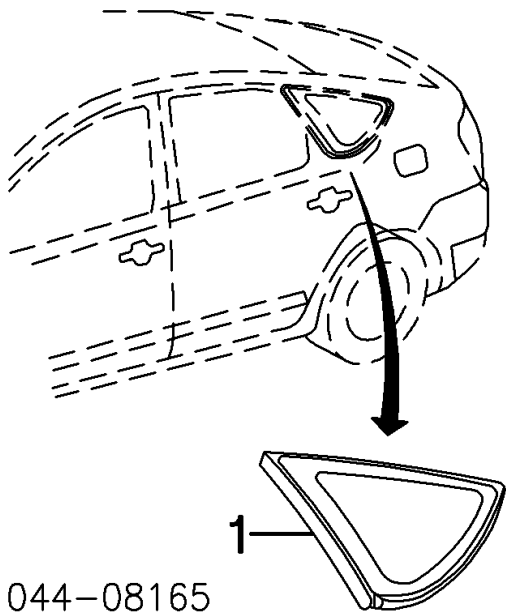
#Includes R&R Side Trim Panel

2 Clip, Trim Panel (9/Side)¶	R		90467-10161	\$1.06
	L		90467-10161	\$1.06

2010 Toyota Prius V Sedan

¶Included w/Quarter Trim Panel Assy

QUARTER GLASS
STATIONARY



044-08165

R&I Quarter Glass

R	#2.2
L	#2.2

#Includes Clean Up Old Adhesive as Necessary

- 1 Glass, Quarter¶
- Toyota
- NAGS

R	#2.0	62710-47031
L	#2.0	62720-47031
R	#2.0	N.A.
L	#2.0	N.A.

¶Non-Reusable Part

#Includes Clean Up Old Adhesive as Necessary

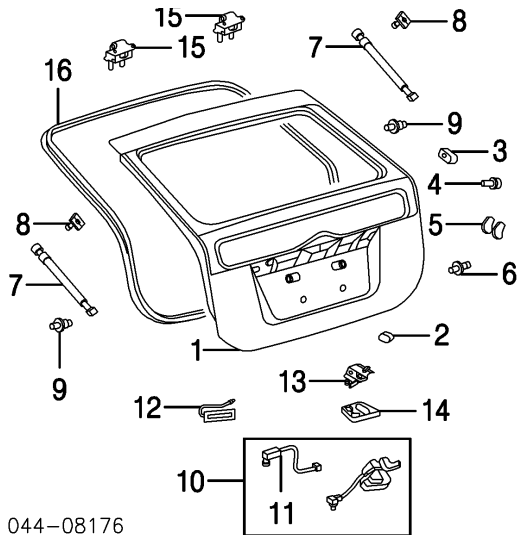
Adhesive, Glass

N.A.

LIFTGATE

Procedures 25 and 28

SHEET METAL

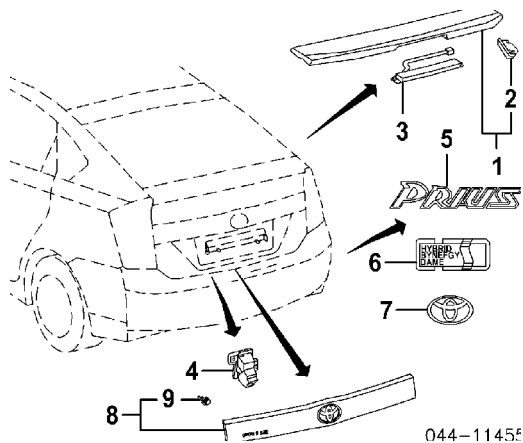


Refinish Liftgate Outside			2.5	
Add for Underside			1.2	
Refinish Hinge	R		.5	
	L		.5	
			.8	
R&I Liftgate Assy				
R&I Lock Cylinder		#.5		
#Includes R&I/R&R Lower Trim Panel				
Add to R&R Liftgate				
To Transfer Upper Glass			.9	
To Transfer Lower Glass			.6	
Add to R&R Liftgate w/Rear Camera			.3	
1 Liftgate (Alum) (I)				
w/Rear View Camera		#5.0	67005-47260	\$486.32
w/o Rear View Camera		#5.0	67005-47250	\$486.32
(I) Add'l Non-Reusable Parts &/or Dealer Contact Required				
#Includes R&I/R&R Wiper Components				
2 Cushion	R	.1	69478-47010	\$4.17
	L	.1	69478-47010	\$4.17
3 Stopper, Liftgate	R	.1	67281-47010	\$12.35
	L	.1	67281-47010	\$12.35

2010 Toyota Prius V Sedan

4 Screw, Mounting	R		90084-10049	\$1.67
	L		90084-10049	\$1.67
5 Cushion, Stopper	R	.1	67293-47020	\$9.72
	L	.1	67293-47020	\$9.72
6 Bolt, Mounting (2/Side)	R		90119-06549	\$0.78
	L		90119-06549	\$0.78
7 Stay, Liftgate	R	#.2	68950-0W540	\$129.44
	L	#.2	68960-0W530	\$129.44
#w/Liftgate Removed Deduct .1				
8 Bracket, Upper	R		68945-47010	\$6.77
	L		68945-47010	\$6.77
9 Bracket, Lower	R		68961-20140	\$5.06
	L		68961-20140	\$5.06
10 Lock Assy, Liftgate		#.3	69350-47020	\$238.21
#w/Lower Trim Panel Removed				
11 Switch, Cargo Lamp¶			84230-47010	\$18.29
¶Included w/Liftgate Lock Assy				
12 Switch, Liftgate			84840-28040	\$78.37
13 Striker, Liftgate		.2	69431-47010	\$26.12
14 Cover, Striker			69415-47020	\$8.26
15 Hinge, Liftgate	R	#.2	68810-47010	\$31.24
	L	#.2	68810-47010	\$31.24
#w/Liftgate Removed				
16 Weatherstrip, Liftgate (On Body)		.4	67881-47021	\$88.63

EXTERIOR TRIM



Refinish Spoiler

Refinish Garnish

R&I Spoiler

1.0

.8

#1.2

2010 Toyota Prius V Sedan

#Includes R&R Center Liftgate Trim Assy

R&I Garnish #.6

#Includes R&R Lower Liftgate Trim

1 Spoiler Assy, Liftgate (P) #.6 76085-47905 \$388.63

#w/Center Liftgate Trim Assy Removed

2 Spoiler, End (P)¶ R 76897-47020 \$6.29
L 76898-47020 \$6.29

¶Included w/Liftgate Spoiler Assy

(P) Paint to Match

3 Lamp, Stop-See Rear Lamps Section

4 Camera, Rear View #.3 86790-47040 \$769.59

#w/Garnish Removed

Nameplate (Adhesive)

5 "Prius" .2 75442-47020 \$32.50

6 "HYBRID SYNERGY DRIVE" .2 75441-47030 \$26.41

7 Emblem (Adhesive) .2 75310-47020 \$32.44

8 Garnish Assy, Liftgate

Beige, (Code 4T8) #.7 76801-47070-E0 \$271.11

Black, (Code 202) #.7 76801-47070-C0 \$271.11

Dark Blue, (Code 8T5) #.7 76801-47070-J0 \$271.11

Gray, (Code 8V1) #.7 76801-47070-J2 \$271.11

Red, (Code 3R3) #.7 76801-47070-D0 \$271.11

Silver, (Code 1F7) #.7 76801-47070-B0 \$271.11

White, (Code 070) #.7 76801-47070-A1 \$271.11

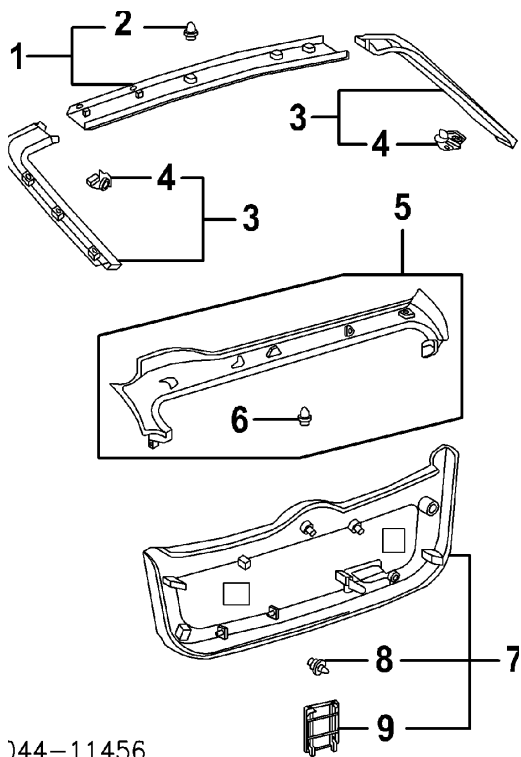
#w/Lower Liftgate Trim Removed

9 Clip, Mounting (11) (a) 75868-60020 \$4.66

(a) Included w/Liftgate Garnish Assy

INTERIOR TRIM

2010 Toyota Prius V Sedan



)44-11456			
1 Trim Assy, Upper Liftgate		.2 64790-47030-C0	\$26.52
2 Clip, Upper (4)¶		90467-10161	\$1.06
¶Included w/Upper Liftgate Trim Assy			
3 Trim Assy, Side Liftgate	R	#.3 67937-47030-C0	\$47.59
	L	#.3 67938-47030-C0	\$46.18
#Includes R&R Upper Liftgate Trim			
4 Clip, Side (3/Side) (a)	R	90467-10161	\$1.06
	L	90467-10161	\$1.06
(a) Included w/Side Liftgate Trim Assy			
5 Trim Assy, Center Liftgate		#.8 67751-47040-C0	\$96.88
#Includes R&R Side Liftgate Trim			
6 Clip, Center (5) (b)		62217-13010	\$1.11
(b) Included w/Center Liftgate Trim Assy			
7 Trim Assy, Lower Liftgate		#.3 67750-47020-C0	\$132.24
#Included in R&R Center Liftgate Trim			
8 Clip, Lower (7) (c)		90467-10161	\$1.06

2010 Toyota Prius V Sedan

9 Cover, Service Hole (c)	R	67847-47010-C0	\$13.23
	L	67847-47010-C0	\$13.23

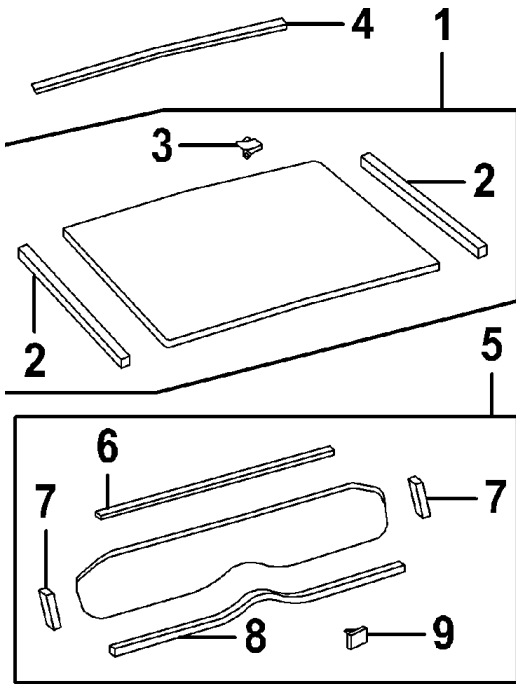
(c) Included w/Lower Liftgate Trim Assy

Harness, Liftgate (d)	82184-47140	\$252.22
-----------------------	-------------	----------

(d) Order by Application

Harness, Lamp-Serviced w/Liftgate Harness

GLASS & PARTS



044-11457

1 Glass Assy, Upper Liftgate			
	Toyota	#2.7	68105-47121
	NAGS	#2.7	N.A.

#Includes Clean Up Old Adhesive as Necessary

2 Moulding, Side (b)¶	R	75573-47080	\$15.72
	L	75574-47020	\$15.72

(b) Non-Reusable Part

3 Spacer, Glass¶	R	64818-47060	\$1.91
	L	64819-47060	\$1.91

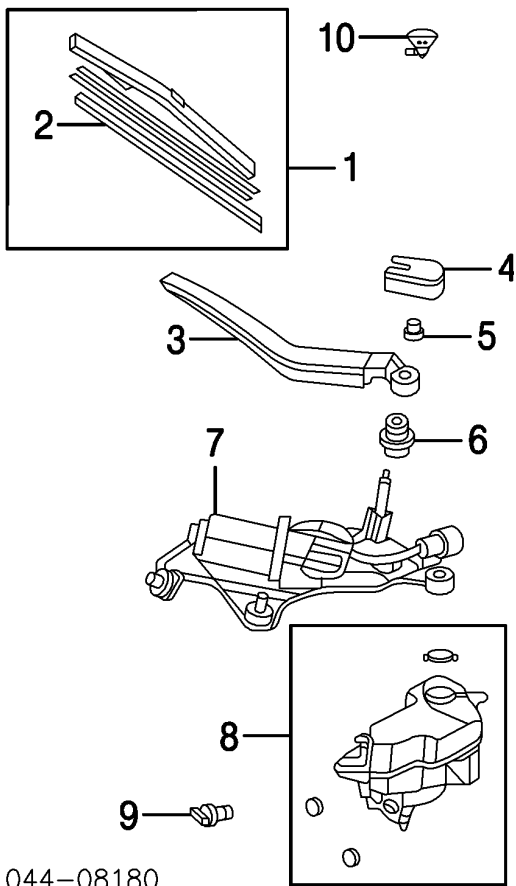
¶Included w/Upper Liftgate Glass Assy

2010 Toyota Prius V Sedan

4	Dam, Liftgate Glass (Adhesive) (b)		56117-50140	\$15.95
	(b) Non-Reusable Part			
	Adhesive, Glass		N.A.	
5	Glass Assy, Lower Liftgate			
	Toyota	#1.9	64821-47030	\$294.74
	NAGS	#1.9	N.A.	
	#Includes Clean Up Old Adhesive as Necessary			
6	Dam, Lower Glass (a) (b)		68294-47060	\$9.26
7	Moulding, Side Glass (a) (b)		75573-47090	\$15.72
		R		
		L	75574-47010	\$15.72
			75575-47020	
8	Moulding, Lower Glass (a) (b)			\$15.72
	(b) Non-Reusable Part			
9	Spacer, Glass (a)	R	64818-47050	\$2.92
		L	64819-47050	\$2.92
	(a) Included w/Lower Liftgate Glass Assy			

WIPER SYSTEM

2010 Toyota Prius V Sedan



044-08180			
1 Blade Assy, Wiper	.1	85242-47030	\$11.90
2 Insert, Blade	.1	85214-0E050	\$5.92
Included w/Wiper Blade Assy			
3 Arm, Wiper	#.2	85241-47030	\$45.47
#Includes R&R Wiper Blade Assy or Insert, Included in R&R Upper Liftgate Glass			
4 Cap, Wiper Arm		85292-47010	\$10.72
5 Nut, Mounting		90179-06158	\$1.20
6 Grommet, Motor		85143-72010	\$2.54
7 Motor, Wiper	#.4	85130-47020	\$186.83
#Includes R&R Wiper Arm, w/Center Liftgate Trim Assy Removed			
8 Reservoir Assy, Washer-See Windshield Section			

2010 Toyota Prius V Sedan

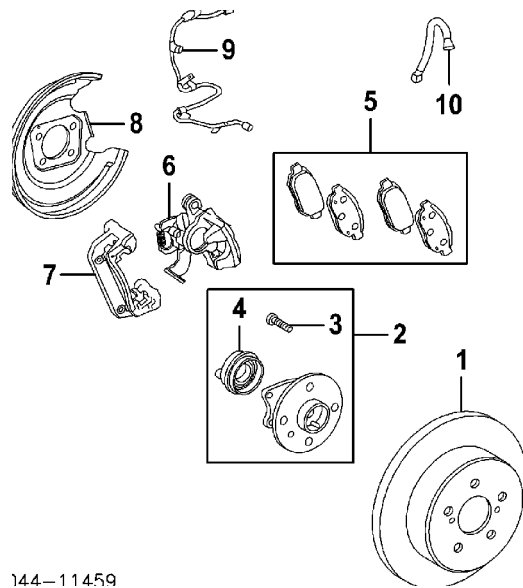
9 Pump, Rear Washer-See Windshield Section

10 Nozzle, Liftgate Washer	#.2	85391-47020	\$17.92
----------------------------	-----	-------------	---------

#w/Upper Liftgate Trim Removed, Included in R&R Liftgate

REAR SUSPENSION

Procedure 23



R&I Suspension/Axle Beam Assy	2.0
Adjust Four Wheel Alignment	1.6
Bleed Brake System	1.0

NOTE 1: R&I/R&R Does Not include alignment or bleed brake system.

1 Rotor, Brake	R	#.6	42431-12310	\$102.73
	L	#.6	42431-12310	\$102.73
#R&R Both 1.0				
2 Hub Assy	R	#.9	42450-47040	\$262.70
	L	#.9	42450-47040	\$262.70
#Includes R&R Rotor				
3 Stud, Lug (5/Side)¶	R		90942-02049	\$3.60
	L		90942-02049	\$3.60
4 Sensor, Skid Control-Serviced w/Hub Assy¶				
¶Included w/Hub Assy				
5 Pad Set, Brake		#1.0	04466-47020	\$52.99
#Deduct .5 for Each Caliper Removed				
6 Caliper, Brake	R	#.5	47830-12151	\$297.23
	L	#.5	47850-12151	\$297.23
7 Adapter, Caliper	R	#.5	47821-12151	\$112.29

2010 Toyota Prius V Sedan

L #.5 47821-12151 \$112.29

#R&R One Side Complete, R&R Both Sides .8

8 Plate, Backing R #.2 47881-12071 \$26.58

L #.2 47882-12071 \$26.58

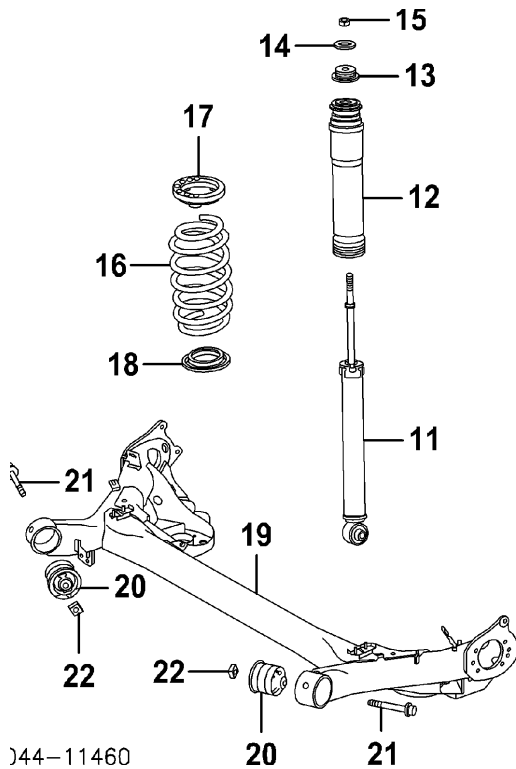
#w/Hub Removed

9 Harness, Rear Sensor-See ABS/Brakes Section

10 Hose, Brake R #.3 90947-02F85 \$34.84

L #.3 90947-02F86 \$34.84

#w/Caliper Removed Deduct .2



44-11460

11 Absorber, Shock R #.8 48530-80533 \$38.01

L #.8 48530-80533 \$38.01

12 Bumper, Spring R #.8 48341-75010 \$42.33

L #.8 48341-75010 \$42.33

13 Support, Absorber R #.8 48755-12100 \$60.02

L #.8 48755-12100 \$60.02

14 Washer, Cushion R #.8 90948-02159 \$6.77

L #.8 90948-02159 \$6.77

15 Nut, Mounting R #.8 94130-61200 \$1.20

L #.8 94130-61200 \$1.20

2010 Toyota Prius V Sedan

#R&R One Side Complete, w/Necessary Interior Trim Removed

16 Spring, Coil	R	#1.0	48231-47140	\$75.18
	L	#1.0	48231-47140	\$75.18
17 Insulator, Upper Spring	R	#1.0	48257-52010	\$7.52
	L	#1.0	48257-52010	\$7.52
18 Insulator, Lower Spring	R	#1.0	48258-52030	\$8.12
	L	#1.0	48258-52030	\$8.12

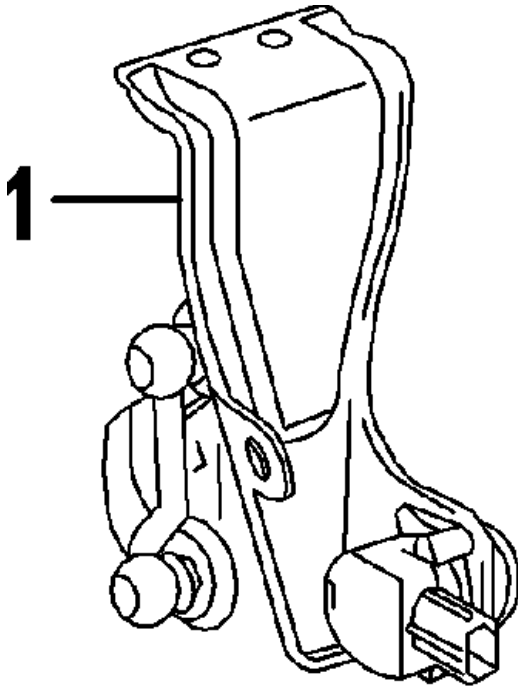
#R&R One Side Complete, R&R Both Sides 1.8

19 Beam, Rear Axle		3.4	42101-12171	\$1,238.35
20 Bushing, Carrier	R	#.4	48725-47030	\$71.02
	L	#.4	48725-47030	\$71.02

#w/Rear Axle Beam Assy Removed

21 Bolt, Link	R		90119-14131	\$6.06
	L		90119-14131	\$6.06
22 Nut, Link	R		90173-14004	\$1.09
	L		90173-14004	\$1.09

LEVEL CONTROL

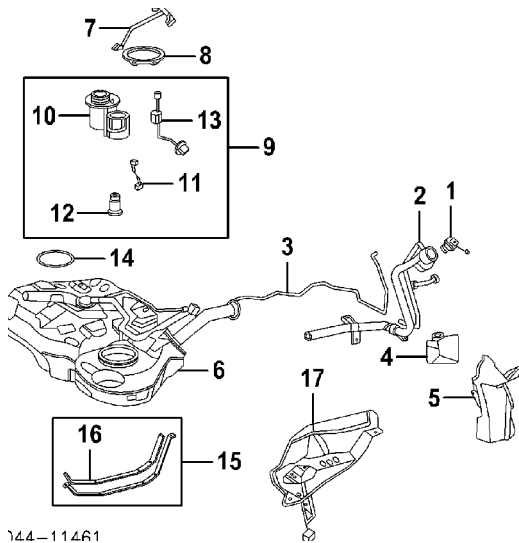


044-11458

1 Sensor, Rear Level	R	.7	89407-12030	\$340.73
----------------------	---	----	-------------	----------

REAR DRIVE AXLE

FUEL TANK



144-11461

R&I Fuel Tank

1.6

NOTE: R&I/R&R Does Not include drain fuel.

1	Cap, Fuel Filler	77300-75010	\$18.72
2	Pipe, Fuel Filler	77201-47120	\$186.80
3	Tube, Breather Protector, Tube	77226-47050	\$38.84
4	No. 1	77277-47040	\$55.62
5	No. 2	77277-47050	\$11.83
6	Tank, Fuel	2.0 77001-47110	\$441.76
7	Tube, Fuel Feed	77209-47050	\$21.35
8	Retainer, Fuel Pump	77144-47040	\$22.44
9	Pump Assy, Fuel	#1.2 77020-47080	\$731.12
#Included in R&R Fuel Tank			
10	Plate, Suction¶	77024-47030	\$107.40
11	Harness, Fuel Pump¶	77785-12020	\$14.98
12	Pump, Fuel¶	23220-47010	\$339.73
13	Sender, Fuel Gauge¶	83320-47050	\$86.40
¶Included w/Fuel Pump Assy			
14	Gasket, Fuel Pump	77169-47040	\$17.98
15	Support Assy, Tank	R 77601-47040	\$49.33
		L 77602-47040	\$40.58
16	Seat, Support (a)	R 77681-47020	\$10.57
		L 77682-47020	\$10.57

(a) Included w/Tank Support Assy

2010 Toyota Prius V Sedan

17 Protector, Tank

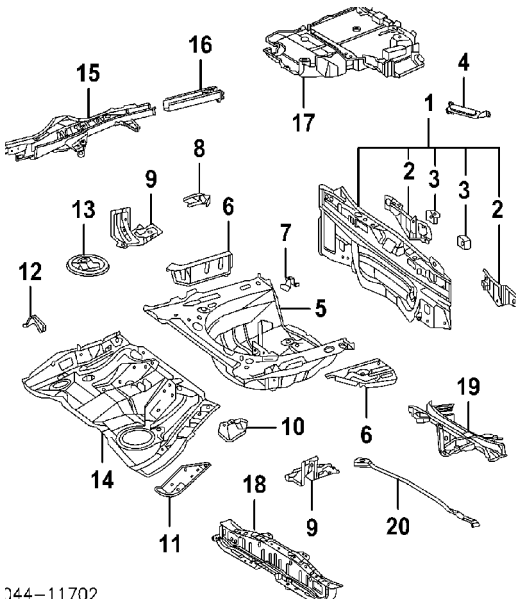
77641-47020

\$65.76

REAR BODY

Procedures 26 and 28

SHEET METAL



744-11702

Refinish Rear Body Panel Outside		2.0		
Add for Inside		1.0		
Refinish Rear Floor Pan		1.5		
Add for Underside		.8		
Refinish Sidemember Assy	R	1.0		
	L	1.0		
Add to R&R Rear Body Panel				
w/Antenna		.2		
1 Panel Assy, Rear Body		#9.0	58307-47060	\$356.74
#Deduct 2.5 for Each Quarter Panel Removed, Deduction Includes Common Surfaces & Included Operations				
2 Reinf, Lower¶	R	1.5	58383-47010	\$55.62
	L	1.5	58384-47020	\$48.61
3 Bracket, Bumper¶	R	.5	58386-02030	\$10.15
	L	.5	58386-02030	\$10.15
¶Included w/Rear Body Panel Assy				
Striker, Liftgate-See Liftgate Section				
4 Antenna, Electronic Key		#.2	89997-30070	\$84.65
#w/Rear Cover Removed				

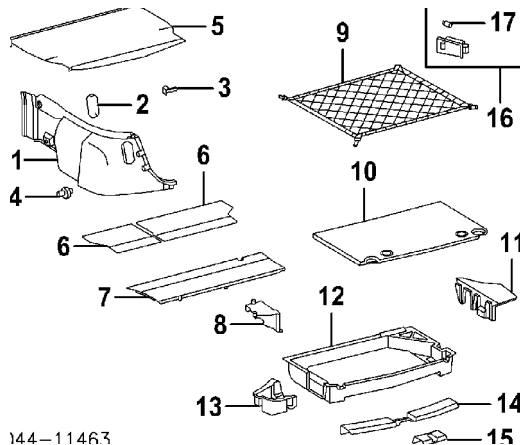
2010 Toyota Prius V Sedan

5 Pan, Rear Floor		#12.5	58311-47070	\$360.30
#w/Rear Body Panel Assy Removed				
6 Panel, Side	R	2.5	58302-47030	\$112.63
	L	2.0	58303-47030	\$54.93
7 Bracket, Spare Wheel		.5	58351-12060	\$11.09
8 Bracket, Floor	R	.5	57695-47030	\$29.47
	L	.5	57696-47030	\$29.47
9 Panel, Side Floor	R	1.0	58305-12040	\$84.65
	L	1.0	58306-12030	\$84.65
10 Bracket, Seat Mtg	L	.5	58248-47010	\$29.47
11 Reinf, Seat Belt Anchor	R	.5	58015-47041	\$60.87
	L	.5	58016-47031	\$62.62
12 Bracket, Seat Cushion	R		58244-47010	\$18.43
13 Cover, Service Hole			58325-12140	\$31.21
14 Pan, Center Floor			58211-47050	\$297.34
15 Sidemember, Rear (HSS)	R	7.5	57601-12A00	\$402.29
	L	7.5	57602-12A00	\$402.29
16 Rail, Sidemember (HSS)	R	#4.0	57603-47030	\$93.40
	L	#4.0	57604-47030	\$93.40

#w/Rear Body Panel Assy Removed, w/Rear Floor Floor Pan Removed 1.0

17 Cover, Rear Floor			58308-47011	\$275.99
Crossmember, Rear				
18 No. 1			57605-12321	\$234.38
19 No. 2		5.0	57606-47041	\$353.30
20 Brace, Rear Suspension			53605-12020	\$165.82

INTERIOR TRIM



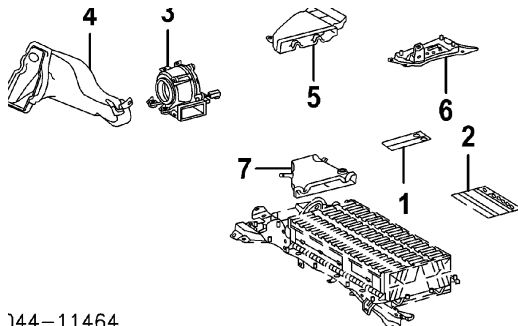
1 Panel, Side Trim	R	.6	64730-47031-B2	\$181.19
	L	.6	64740-47031-B2	\$164.76
2 Cover, Access Hole	R		64745-47030-B0	\$14.83
	L		64745-47030-B0	\$14.83

2010 Toyota Prius V Sedan

3	Holder, Tonneau Cover	R	64937-47010-B0	\$8.26
		L	64937-47010-B0	\$8.26
4	Clip, Side Panel (2/Side)	R	90467-10161	\$1.06
		L	90467-10161	\$1.06
	Receiver, Keyless Entry	R	89740-47050	\$179.11
5	Cover, Tonneau	#.2	64910-47020-B0	\$321.83
	#Included in R&R Side Trim Panel			
	Board, Floor			
6	Front	R	58401-47010-B1	\$68.56
		L	58402-47010-B1	\$65.76
7	Rear		58415-47030-B3	\$210.57
8	Spacer, Panel		58427-47010	\$70.31
9	Net, Partition		64230-47020	\$57.02
10	Cover, Rear		58416-47030-B3	\$367.31
11	Extension, Side Panel	R	58490-47050-B2	\$122.09
		L	58418-47030-B3	\$66.82
	Box, Storage			
12	Right	R	64993-47020	\$349.81
13		L	64997-47020	\$106.00
14	Plate, Rear Scuff	#.2	64716-47030-B0	\$64.70
	#Included in R&R Side Trim Panel			
15	Bezel, Striker		64718-47030-B0	\$24.66
16	Lamp Assy, Cargo	.2	81340-30100-B0	\$33.76
17	Bulb, Lamp¶		00234-13050	\$1.40

¶Included w/Cargo Lamp Assy

ELECTRIC MOTOR COMPONENTS



144 – 11464

R&I High Voltage Battery Assy

#2.2

#w/Rear Seat Assy & Luggage Trim Removed

2010 Toyota Prius V Sedan

NOTE: Refer to Special Cautions Section at the beginning of this vehicle text.

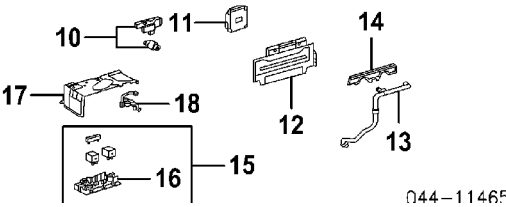
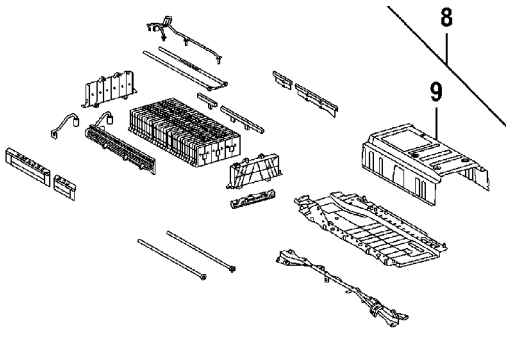
1 Label, Charging Notice-See Information Labels Section

2 Label, Charging Information-See Information Labels Section

3 Fan & Motor, Battery Blower	#.5	G9230-47020	\$151.41
4 Duct, Upper Vent	#.3	G92D1-47010	\$65.76
5 Duct, Lower Vent	#.2	G92F1-47010	

#w/Rear Seat Assy & Luggage Trim Removed

6 Bracket, Attaching		G920U-47010	
7 Cover, Adapter		G92E1-47010	



8 Battery Assy, High Voltage	#2.6	G9510-47060	\$2,729.35
------------------------------	------	-------------	------------

#w/Rear Seat Assy & Luggage Trim Removed

9 Cover, Upper Battery¶		G920N-47010	\$129.44
-------------------------	--	-------------	----------

¶Included w/High Voltage Battery Assy

10 Grip, Service Plug	.5	G3834-48010	\$24.84
11 Sensor, Battery Voltage	#.4	89892-47020	\$231.82

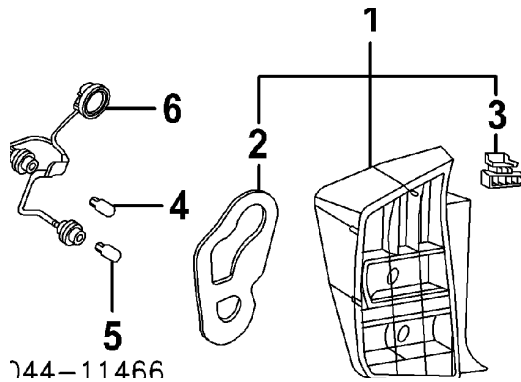
#w/High Voltage Battery Removed

12 Bracket, Battery Mtg	R	G920B-47010	
-------------------------	---	-------------	--

2010 Toyota Prius V Sedan

	L	G920Q-47010	
13 Hose, Drain		G9290-47010	
14 Seal, Battery		G92J5-47010	
15 Block Assy, Junction	#.6	G92Z0-47010	\$176.08
16 Block, Junction (a)	#.4	G92Z1-47020	
(a) Included w/Junction Block Assy			
#w/High Voltage Battery Removed			
17 Cover, Lower		G920L-47010	
18 Harness, Battery		G92X2-47010	

REAR LAMPS
COMBINATION LAMP



R&I Combination Lamp Assy

R #1.3
L #1.3

#Includes R&I Rear Cover, w/Necessary Interior Trim Removed

1 Lamp Assy, Combination	R	#1.3	81551-47110	\$348.01
	L	#1.3	81561-47111	\$348.01

#Includes R&I Rear Cover, w/Necessary Interior Trim Removed

2 Gasket, Combination Lamp¶	R		81552-47110	\$13.63
	L		81562-47110	\$13.63
3 Retainer, Lamp¶	R		52562-47010	\$16.38
	L		52563-47010	\$16.38

¶Included w/Combination Lamp Assy

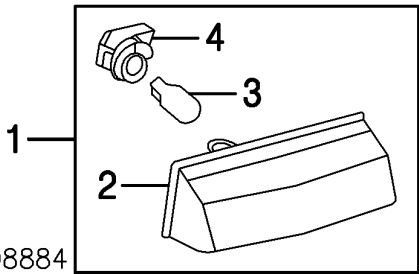
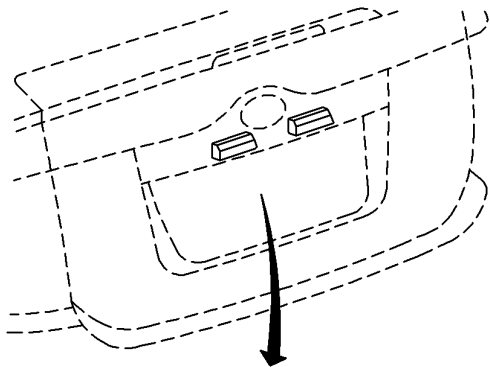
4 Bulb, Tail/Stop Lamp	R	#.2	90981-13043	\$4.72
	L	#.2	90981-13043	\$4.72
5 Bulb, Back-Up	R	#.2	90981-15011	\$6.26
	L	#.2	90981-15011	\$6.26

#Included in R&I/R&R Combination Lamp Assy

6 Socket, Combination Lamp	R		81555-47110	\$27.84
	L		81555-47110	\$27.84
Harness, Combination Lamp			N.A.	

LICENSE LAMP

2010 Toyota Prius V Sedan



044-08884

R&I License Lamp Assy

R #.2
L #.2

#w/Garnish Removed, Included in R&R Garnish

1 Lamp Assy, License	R	#.2	81270-53011	\$28.59
	L	#.2	81270-53011	\$28.59

#w/Garnish Removed, Included in R&R Garnish

2 Lens, License Lamp¶	R	#.2	81271-53011	\$16.46
	L	#.2	81271-53011	\$16.46
3 Bulb, License Lamp¶	R	#.2	00234-00192	\$1.04
	L	#.2	00234-00192	\$1.04

#R&R One Side Complete, Included in R&I/R&R License Lamp Assy

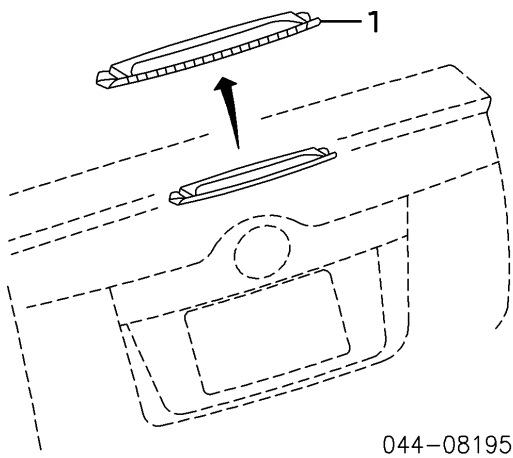
4 Socket, License Lamp¶	R		90075-99011	\$2.06
	L		90075-99011	\$2.06

¶Included w/License Lamp Assy

Harness, Lamp-See Liftgate Section

HIGH MOUNT STOP LAMP

2010 Toyota Prius V Sedan



R&I Stop Lamp

#.2

#w/Spoiler Removed, Included in R&R Spoiler

1 Lamp, Stop

#.2

81006-47011

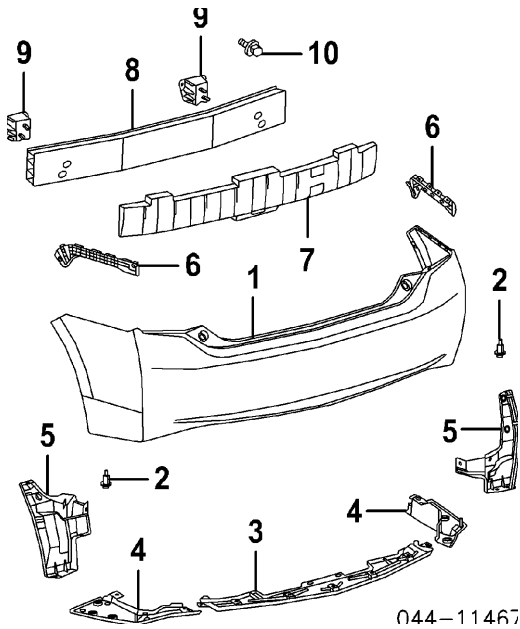
\$123.84

#w/Spoiler Removed, Included in R&R Spoiler

Harness, Lamp-See Liftgate Section

REAR BUMPER

Procedures 27 and 28



Refinish Rear Cover	2.4
R&I Rear Cover	1.0
O/H Rear Cover (Includes R&I)	1.7

NOTE: All Parts in this section are included in overhaul unless noted otherwise.

1 Cover, Rear (P) (P) Paint to Match	1.7	52159-47905	\$234.57
2 Clip, Bumper (2/Side)	R	52161-02020	\$2.14
	L	52161-02020	\$2.14
3 Spoiler, Center	.3	76891-47020	\$122.44
4 Spoiler, Side	R	.2 76087-47020	\$63.30
	L	.2 76088-47020	\$39.18
5 Seal, Bumper	R #.2	52591-47021	\$35.32
	L #.2	52592-47021	\$47.93
#Included in R&I/R&R Rear Cover			
6 Retainer, Cover	R #.2	52575-47020	\$51.07
	L #.2	52576-47020	\$51.07
7 Absorber, Energy	#.2	52615-47050	\$41.64
8 Reinforcement, Bumper (Alum)	#.2	52023-47010	\$248.02

#w/Rear Cover Removed, Not Included in O/H

2010 Toyota Prius V Sedan

9 Bracket, Reinforcement (HSS)	R	#.2	52015-47040	\$46.44
	L	#.2	52016-47020	\$46.44
10 Bolt, Reinforcement (2/Side)	R	#	90119-08958	\$1.67
	L	#	90119-08958	\$1.67

#w/Reinforcement Removed, Not Included in O/H