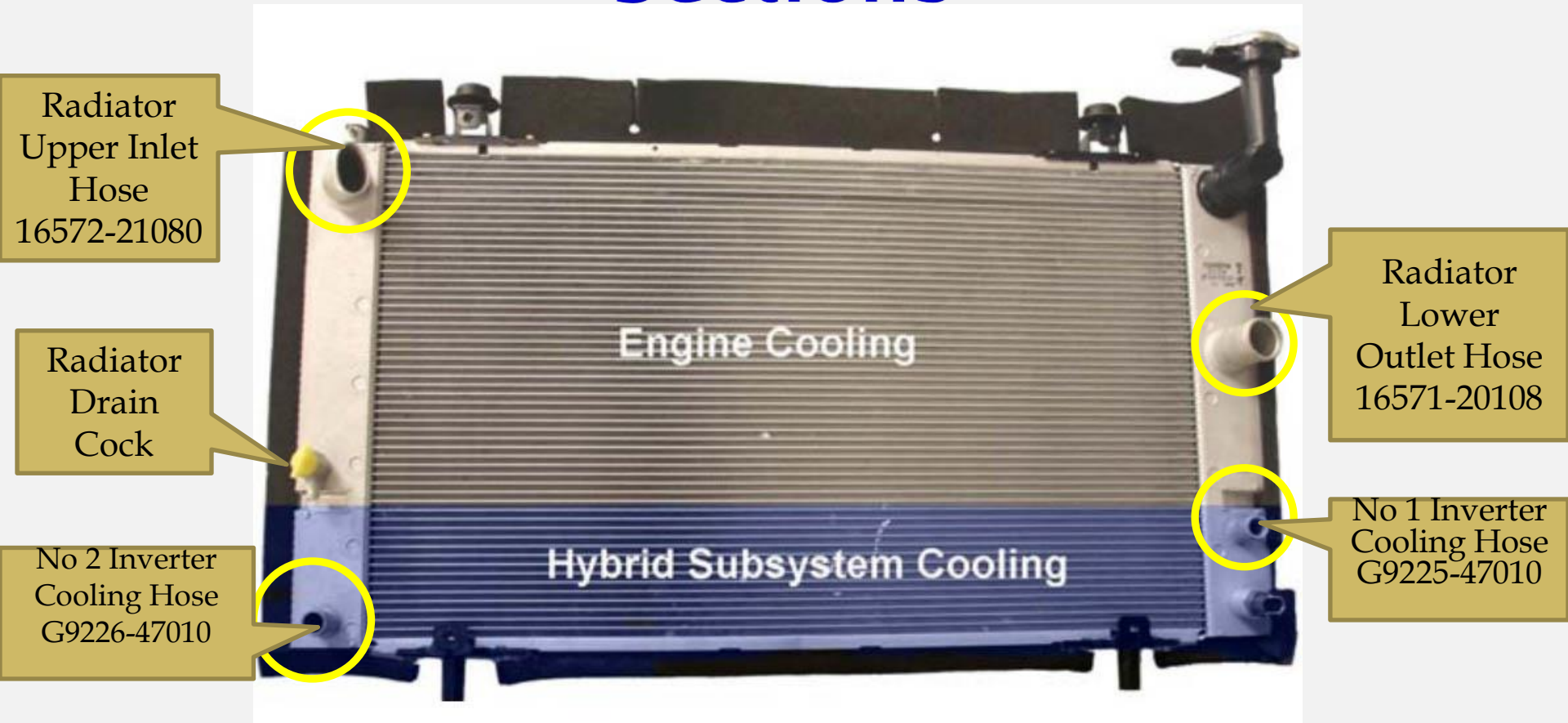


# HOW TO REPLACE YOUR GEN II PRIUS ENGINE COOLANT

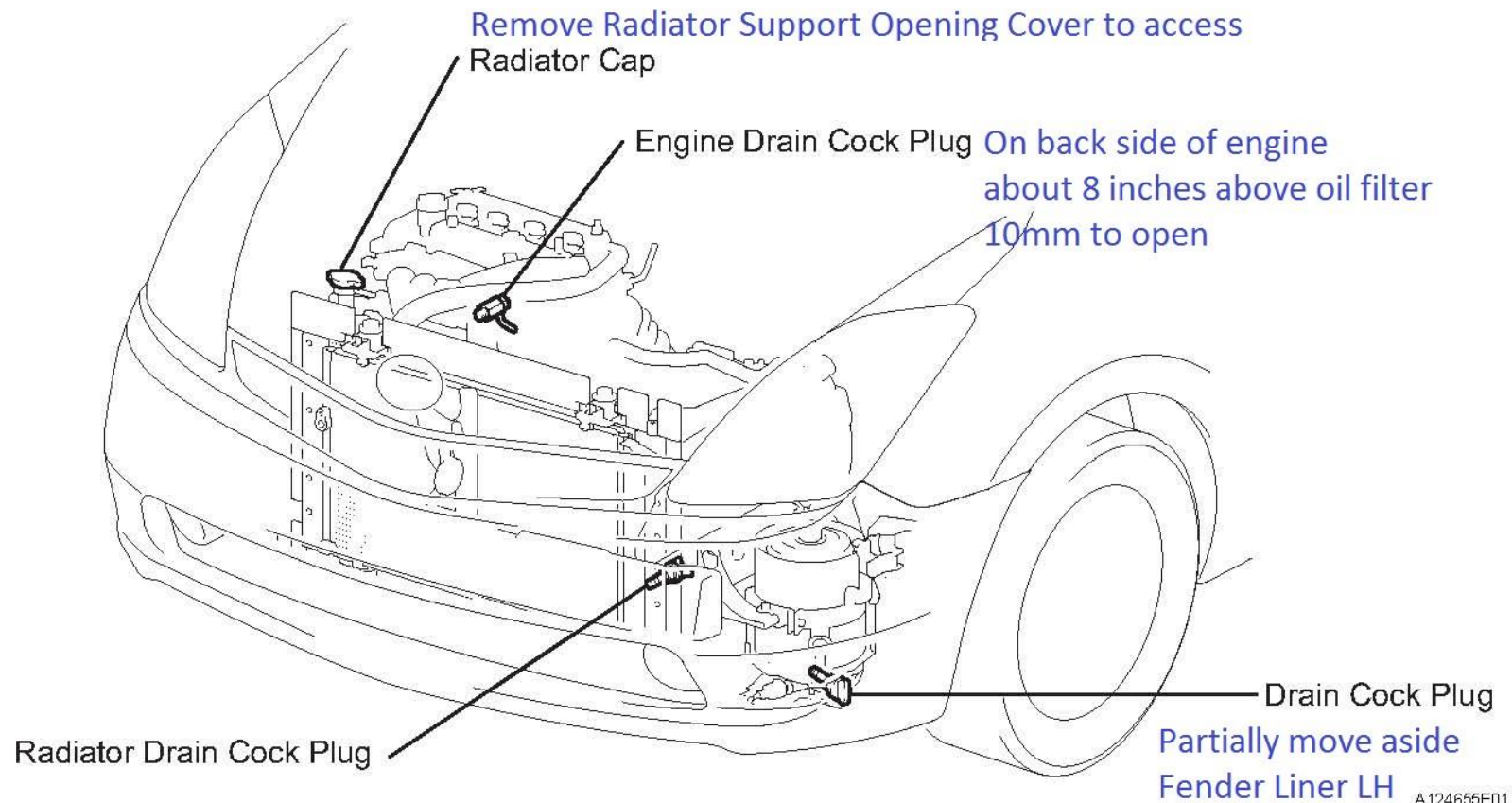
Note:

- The Engine Coolant and Inverter Coolant are Separate Systems in the same radiator. Both Use Toyota Super Long Life Coolant (SLLC).
- Engine Coolant is in Upper 2/3 of Radiator
- Inverter Coolant in lower 1/3 of Radiator.
- Engine Coolant System Has 3 Drain Cocks; Radiator, Engine Block and Coolant Heat Storage (CHS) Water Pump.
- Inverter has One Drain Plug on Transaxle.
- Each System Has Its Own Separate Hoses.

# Radiator Engine and Inverter Sections



# Engine Coolant Drain Cock Locations (3)



# Steps to Replace your Gen II Prius Engine Coolant

## REMOVE RADIATOR SUPPORT OPENING COVER

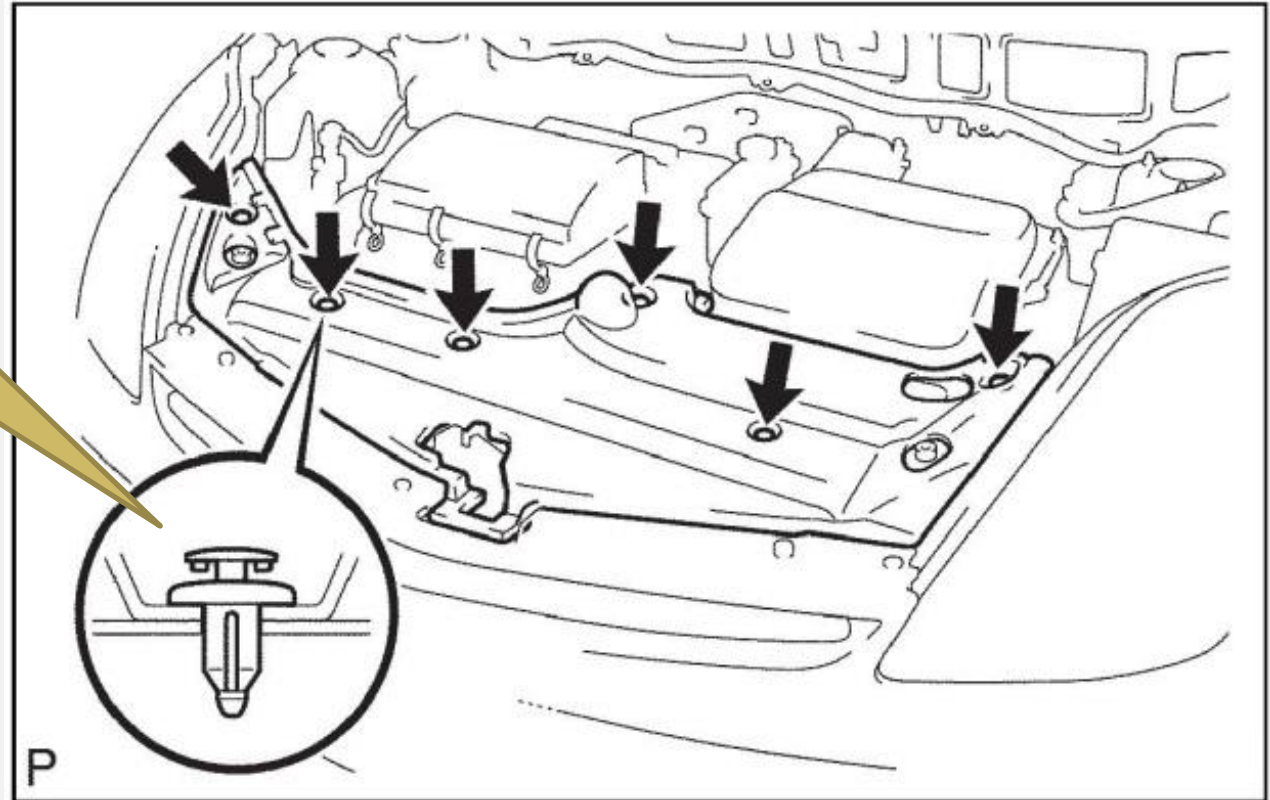
(a) Remove the 6 clips and radiator support opening cover. Phillips & Clip Tool.

### Tools Needed

Phillips Screwdriver

Trim Clip Removal Tool

Ratchet with Extension  
& 10mm Socket



Drain Pan & 3/8 in. ID Hose



**CAUTION: DO NOT REMOVE THE RADIATOR CAP WHILE THE ENGINE AND RADIATOR ARE STILL HOT. PRESSURIZED, HOT ENGINE COOLANT AND STEAM MAY BE RELEASED AND CAUSE SERIOUS BURNS.**



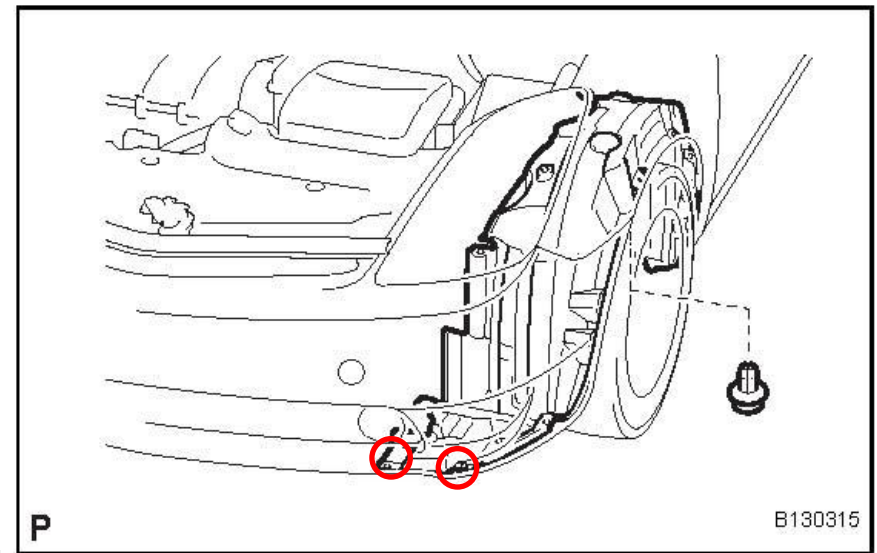
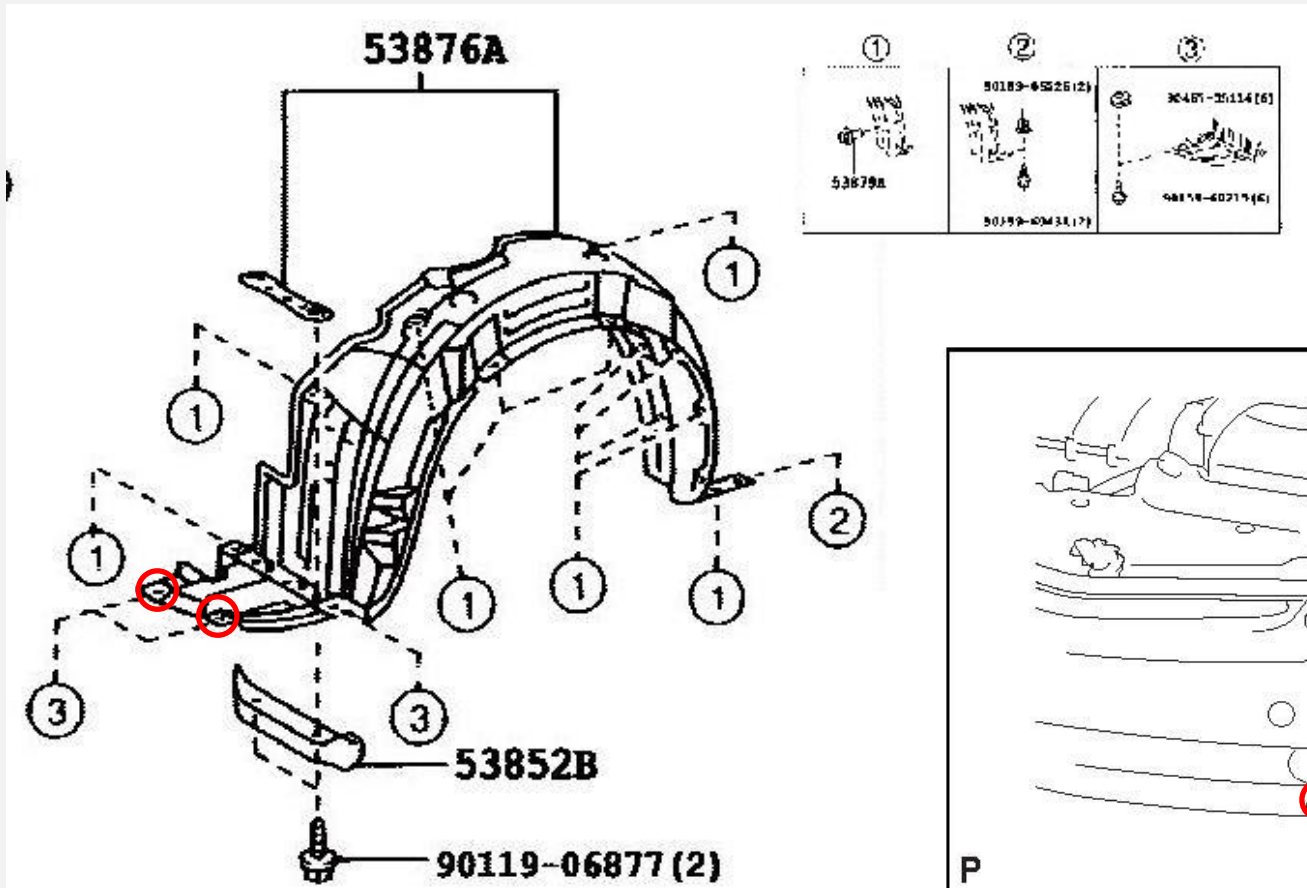
**It is Safest To Start With A Completely Cool Coolant System. The CHS Tank Retains Heat. If Flushing System, Set Heater Temp to High To Get Maximum Flow Through Heater Core BEFORE you Put Car on Jack Stands, Ramps, or Lift. Follow All Manual Instructions for Safety.**



# RADIATOR SUPPORT OPENING COVER Removed

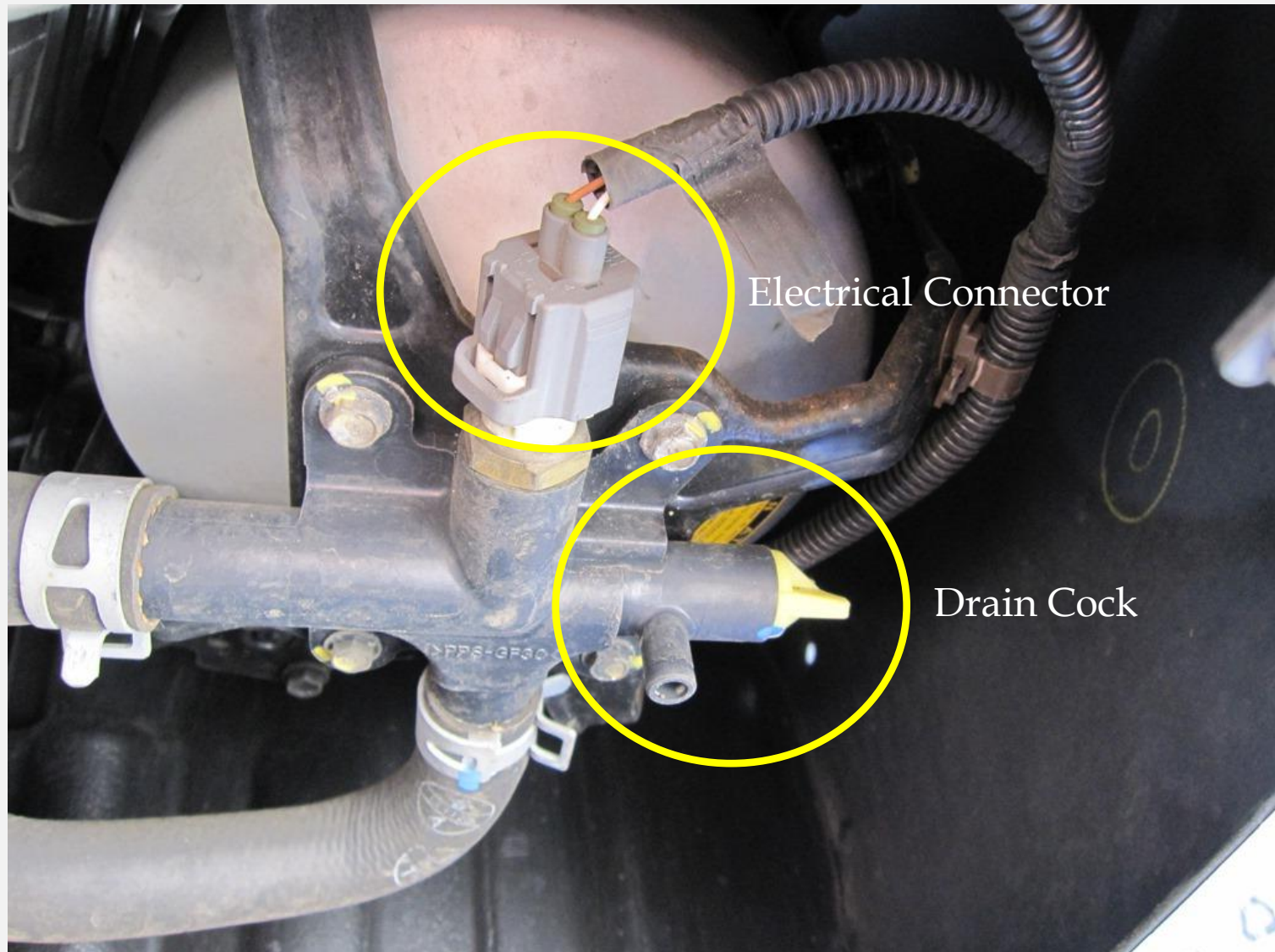


# Take Out 2 Screws Move Aside Front Part of Fender Liner LH To Expose CHS





# DISCONNECT THE COOLANT HEAT STORAGE WATER PUMP CONNECTOR





As You Drain Coolant, Record the Amount of Drained Coolant. You will want to refill the radiator with the same amount of coolant. Lots of patience. It Drains Slowly.

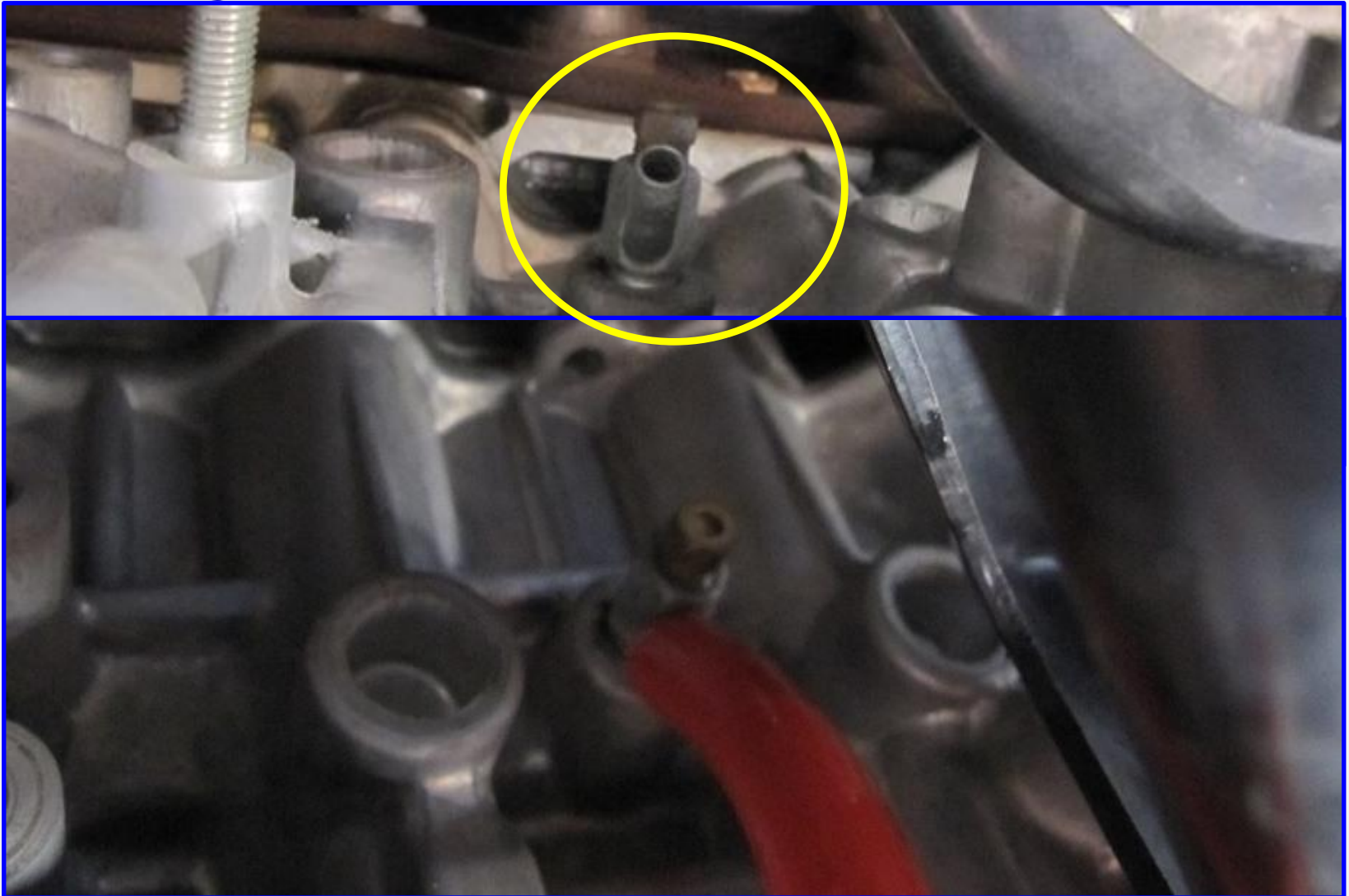


I FILLED THE CONTAINERS WITH 2 CUPS OF WATER AT A TIME AND MARKED MASKING TAPE AHEAD OF TIME TO SEE HOW MUCH COOLANT I DRAINED.

Connect Hose, Loosen the **Drain Cock Plug of the Radiator**. Then Drain the Coolant into your pan. (It helps to take inverter coolant hose below it out of its bracket). Tighten the drain cock plug of the radiator, then disconnect the hose.

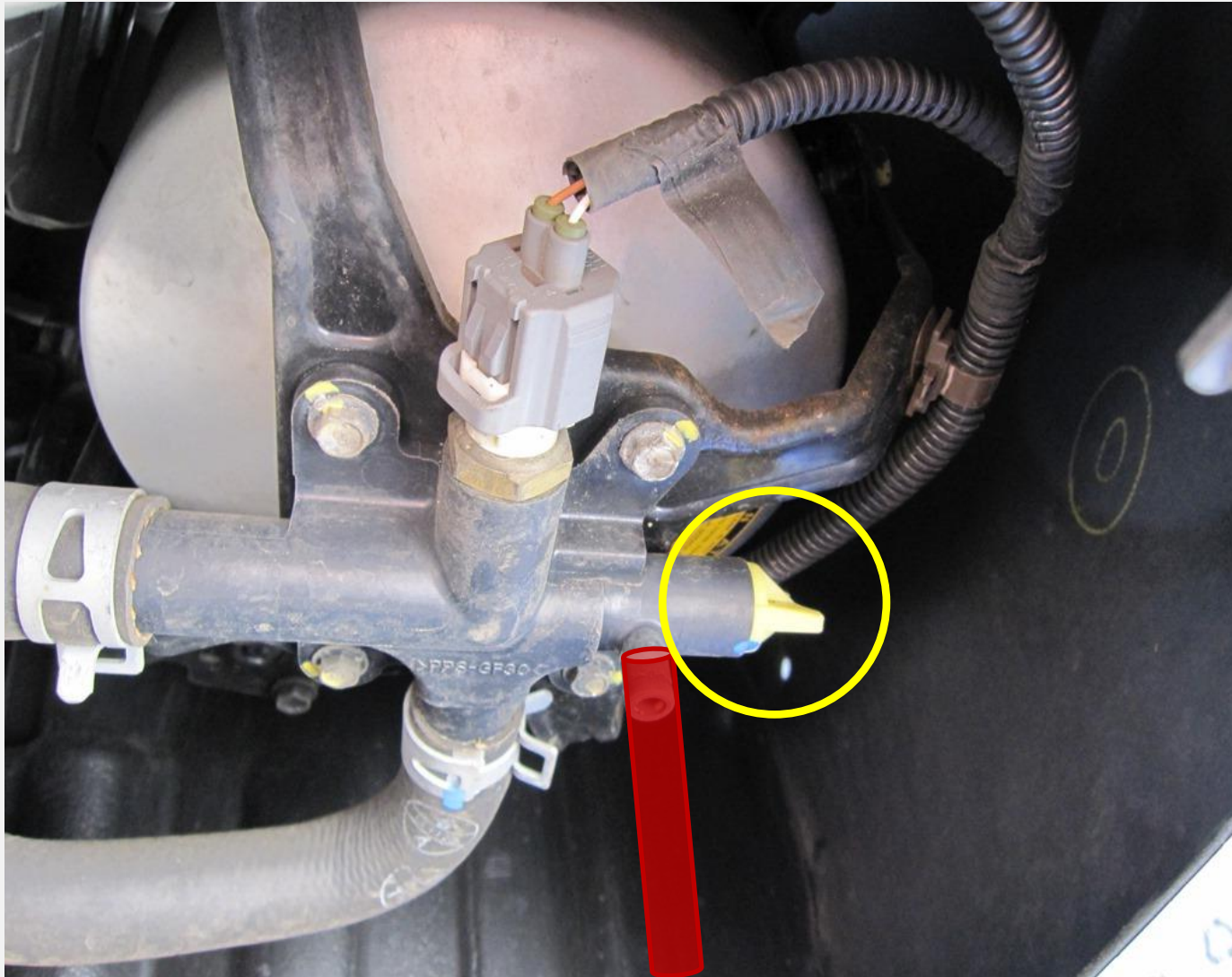


Connect Hose, Loosen the **Drain Cock Plug of the Engine Block**. Then Drain the Coolant into your pan. Patience AGAIN. Tighten the drain cock plug of the Engine Block. Then disconnect the hose.





Connect Hose, Loosen the **Drain Cock Plug of the Coolant Heat Storage Tank**. Then Drain the Coolant into the pan. Tighten the drain cock plug of the Coolant Heat Storage Tank, then disconnect the hose.

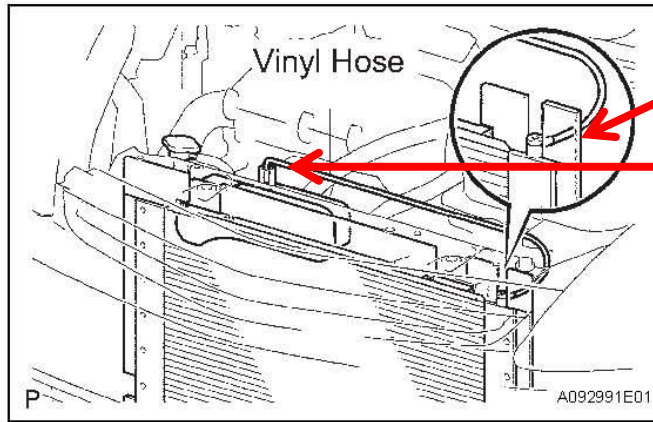


# MAXIMUM AMOUNT OF COOLANT DRAINED

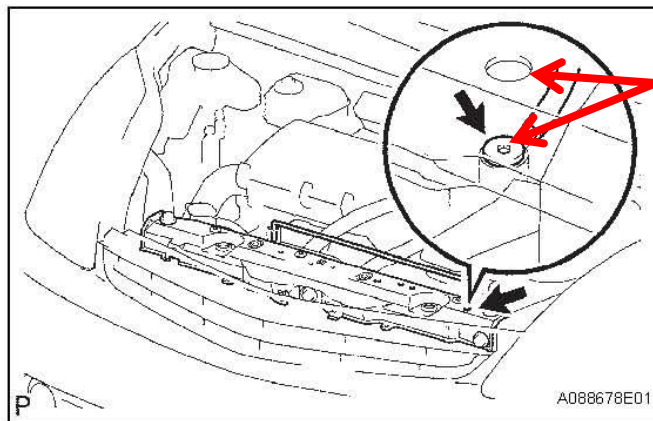


**DISPOSE OF USED COOLANT PROPERLY, I.E. LOCAL RECYCLING POINT.**

# Bleed Air While Refilling With Coolant–Measure Amount Added Comparing to Amount Removed. Amount will be less than 8.6 Liter Maximum Capacity. Heater core will Retain Some Coolant.



- (d) Connect a vinyl hose to the bleeder plug of the radiator assembly and the radiator reservoir.  
HINT:  
Insert the vinyl hose inside the radiator reservoir tank.



- (e) Using a 6 mm socket hexagon wrench, loosen the radiator bleeder plug from the radiator support service hole.
- (f) Fill the radiator with coolant up to the fill port.  
**Standard capacity:**  
8.6 liters (9.1 US qts, 7.6 Imp. qts)  
HINT:  
• When filling coolant, press the radiator hose a few times. If the coolant level goes down, add more coolant.

**PATIENCE AGAIN. THIS TAKES QUITE A WHILE. YOU WANT TO AVOID HAVING THE RED TRIANGLE AND RADIATOR OVERHEAT LIGHT COMING ON WHEN YOU ARE ON THE ROAD DRIVING.**



- Observe the coolant level inside the radiator by pressing the inlet and outlet radiator hoses several times by hand.
- If the coolant level goes down, add more coolant.
- When Coolant Starts Coming Out of Bleed Hose, tighten Bleed Valve with 6mm Hex. Replace Radiator Cap.
- Slowly pour coolant into the Radiator Reservoir until it reaches the full line.
- Connect the coolant heat storage water pump electrical connector.

- Warm up the engine, revving occasionally until the thermostat is open.
- Stop the engine, then wait until the coolant becomes cold.
- Remove the radiator cap and check the coolant level in the **RADIATOR**.
- If the coolant level is lower, add coolant again.
- Warm up the engine, then check the coolant level again.
- REPEAT until the coolant level stops going down, add coolant to the **RADIATOR RESERVOIR TANK** up to the full level.
- It may take 3 or 4 times.

- CHECK FOR ENGINE COOLANT LEAKS AT DRAIN COCKS.
- INSTALL FRONT FENDER LINER LH
- INSTALL RADIATOR SUPPORT OPENING COVER.
- **WARNING:** IF THE RED TRIANGLE AND RADIATOR OVERHEAT LIGHT COME ON WHEN DRIVING, STOP IMMEDIATELY, ALLOW RADIATOR TO COOL, AND ADD COOLANT TO RADIATOR.
- BETTER TO GET ALL AIR BLED AND COOLANT ADDED AT YOUR HOUSE.