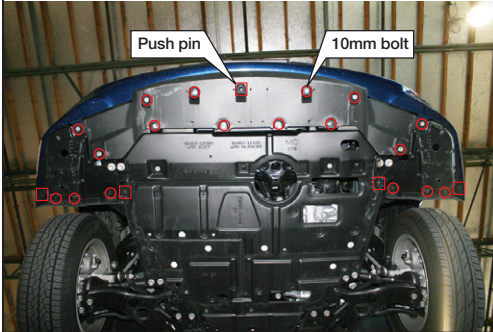


TOYOTA PRIUS 2010

FOG LAMP KIT

Items required for installation:

- ¼" ratchet
- ¼" X 6" extension
- ¼" 10mm shallow socket
- Philips screw driver
- Small screw driver
- Straight O-ring pick
- Coat hanger or welding rod
- Electrical tape
- Needle nose pliers
- Wire cutters
- Cup of soapy water



STEP 1.0 *Remove plastic shielding under front of vehicle*

- Remove 18 10mm bolts and 5 plastic push pins.



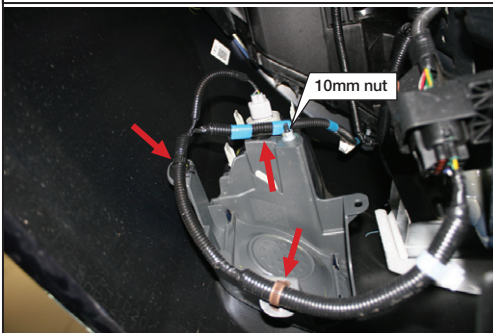
STEP 1.1

- With small screw driver remove plastic push pins.



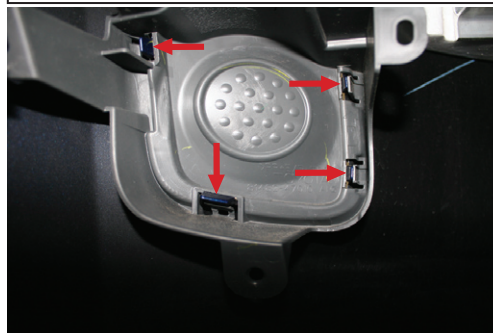
STEP 1.2

- Cover is riveted to wheel well cover so it can not be removed. Just pull it back to give you the necessary room you need.



STEP 2.0 *Removing fog lamp cover from driver side*

- Disconnect wire harness and 10mm nut.



STEP 2.1

- Push tabs away from the center of the fog lamp cover.



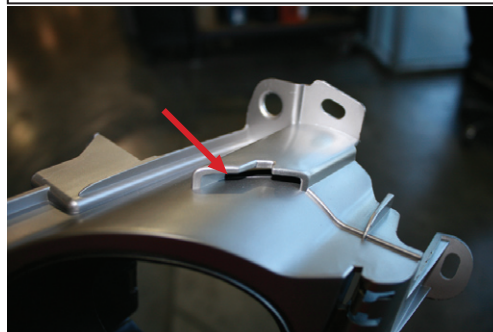
STEP 2.2

- Push cover in toward vehicle.



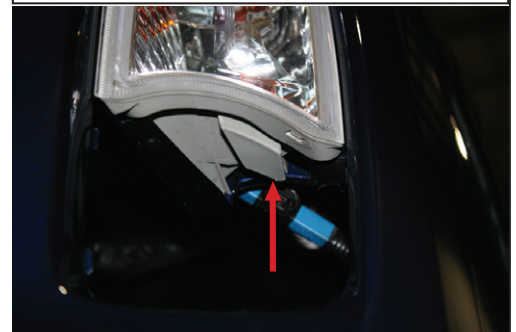
STEP 2.3

- Cover removed.
(Repeat step 2 for passenger side)



STEP 3.0 *Installation of driver side fog lamp*

- Locate pocket on top of fog lamp bezel.



STEP 3.1

- Locate tab under turn signal.