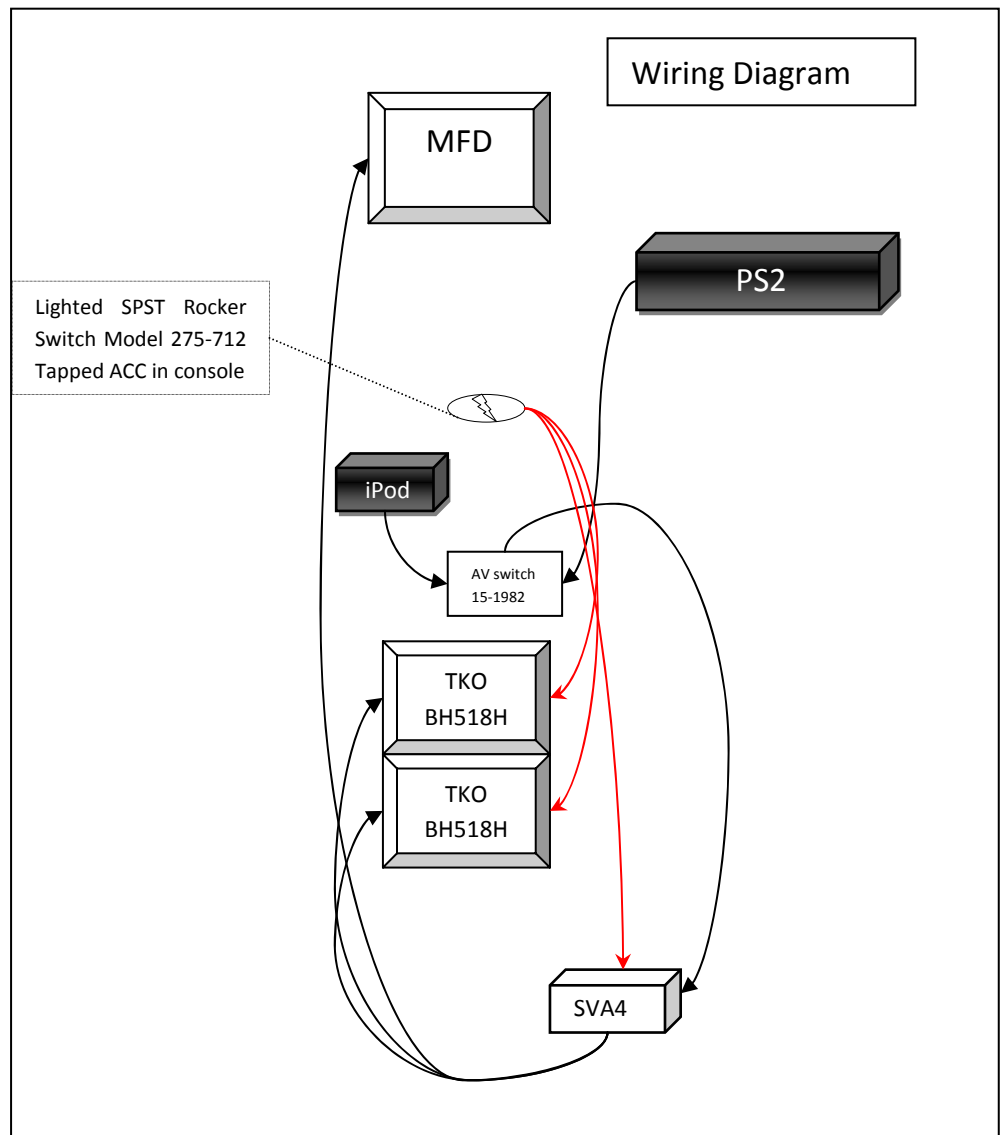


After a few weeks of having the PS2 installed without output on the MFD, I realized there was a critical component missing. You couldn't play from the backseats because the front monitor was too small. I solved this problem by putting some LCD's in the backseat. I used TKO 6 inch screens because they were easy to install and on the less expensive end of the scale. Here's the materials I used and the step by step I did. If you follow these steps and mess everything up in your car, I'm very sorry but I'm not responsible. This is what I did and it worked

2x TKO 518 BHR LCD screens	\$120 total
Switch from radioshack	\$3
RCA wires	(already had)
8 Gauge wire	\$5
Video amplifier SVA4	\$11
Total=	\$140

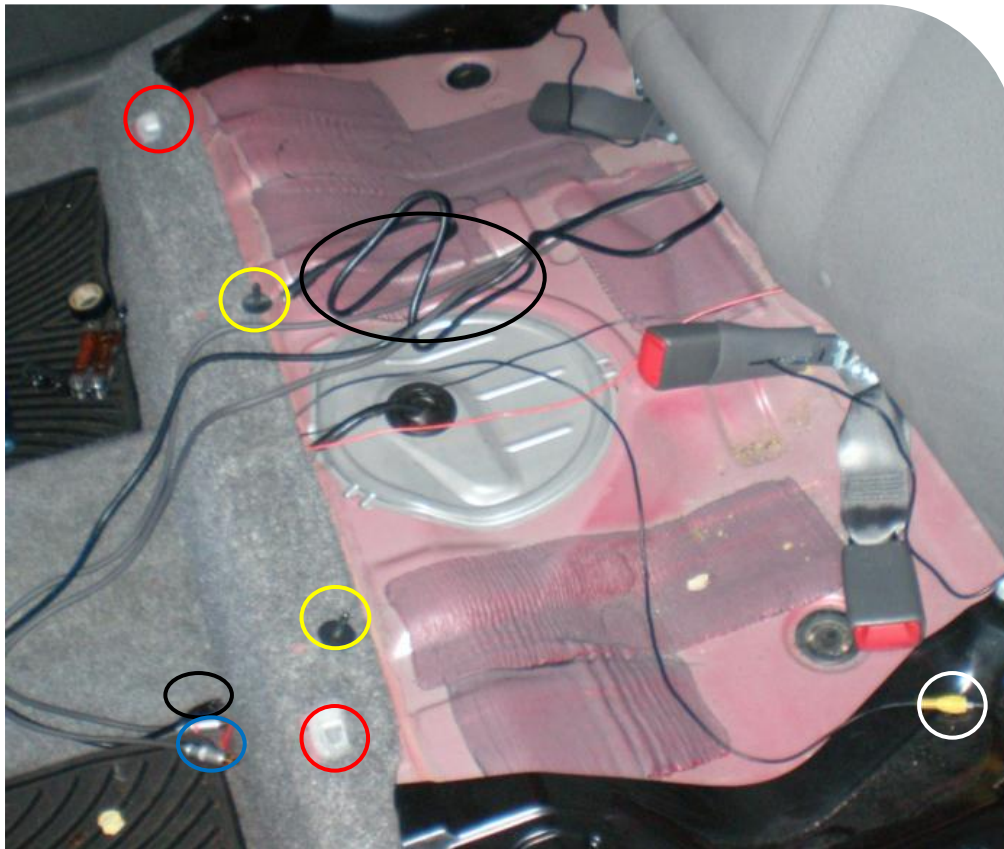
1. POWER

Referring to the wiring diagram, I tapped the acc power in the center console. The Black and white striped wire in the console runs to the power on the switch, the black wire in the console runs to the ground on the switch. The "load" on the switch runs to the trunk, along with the "ground" on the switch which is running to the ACC and the trunk. (no picture of this but contact me for more information) From there, the wires run back from the console under the post between the seats to the rear seat.



2. WIRES

The power is run to the rear cargo hatch. The rear seat is removed by putting your hands on either side of the bolt insert clips (red circles) and pulling up (firmly). Then to give yourself some room to maneuver, remove the alligator plugs (yellow circles) that hold the carpet in place. If you do this gently, you'll be able to reuse them. If the break, don't worry about it, the seat holds the carpet in place anyway. I got the carpet loose enough to fit my whole arm under it and reach from the back seat to the console



You can see the red and black wires laying on the metal shelf where the back seat was. I have them here running between the seatbelts and under the back seats and to the rear cargo storage. At the same time I ran the power, I ran the RCA from the console output to the rear hatch (for the video amplifier (white circle)).

Then, Fold the seats down and remove the bolts that hold the battery cover in place. (don't worry, you won't fry anything) run

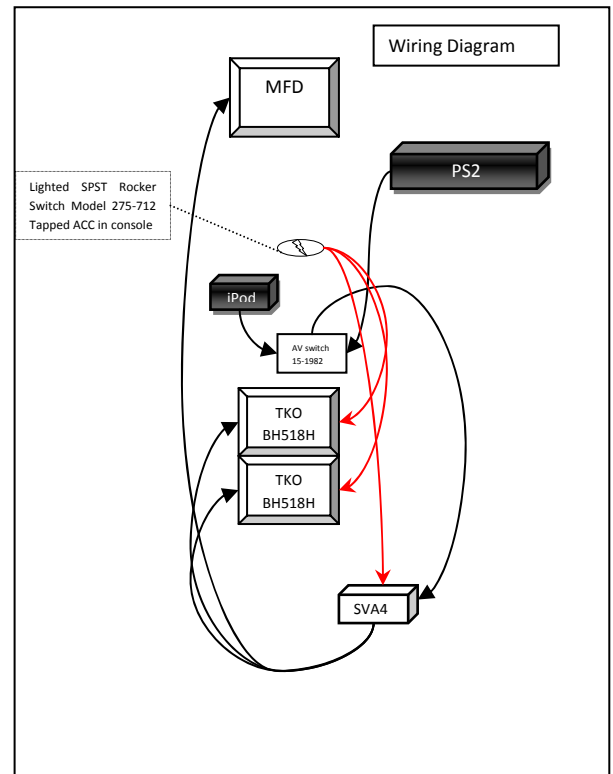
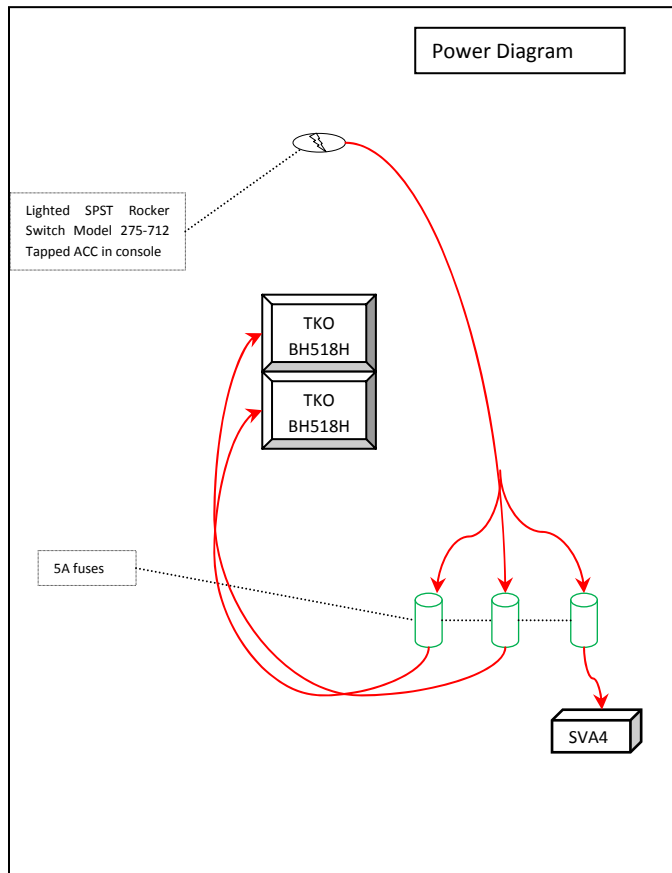
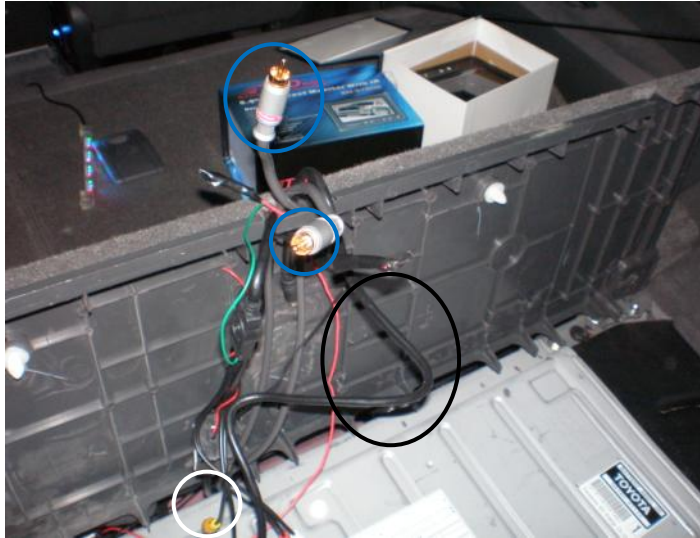
your wires under the cover and into the tray.) Now that you've got power into the back, run the rest of the wires that you will need from the rear hatch to the rear console.

The wires I ran are:

- the RCA wire from the center console input selector (iPod vs PS2) to the rear (for the video amplifier (white circle) →
- Power and ground →
- the RCA from the rear hatch to the MFD ((I ran two just in case)) (blue circle) ←
- OUTPUT A/V (black plugs shown above near the RCA's in black circle) From Rear to console ←

The wires I ran are: (Again)

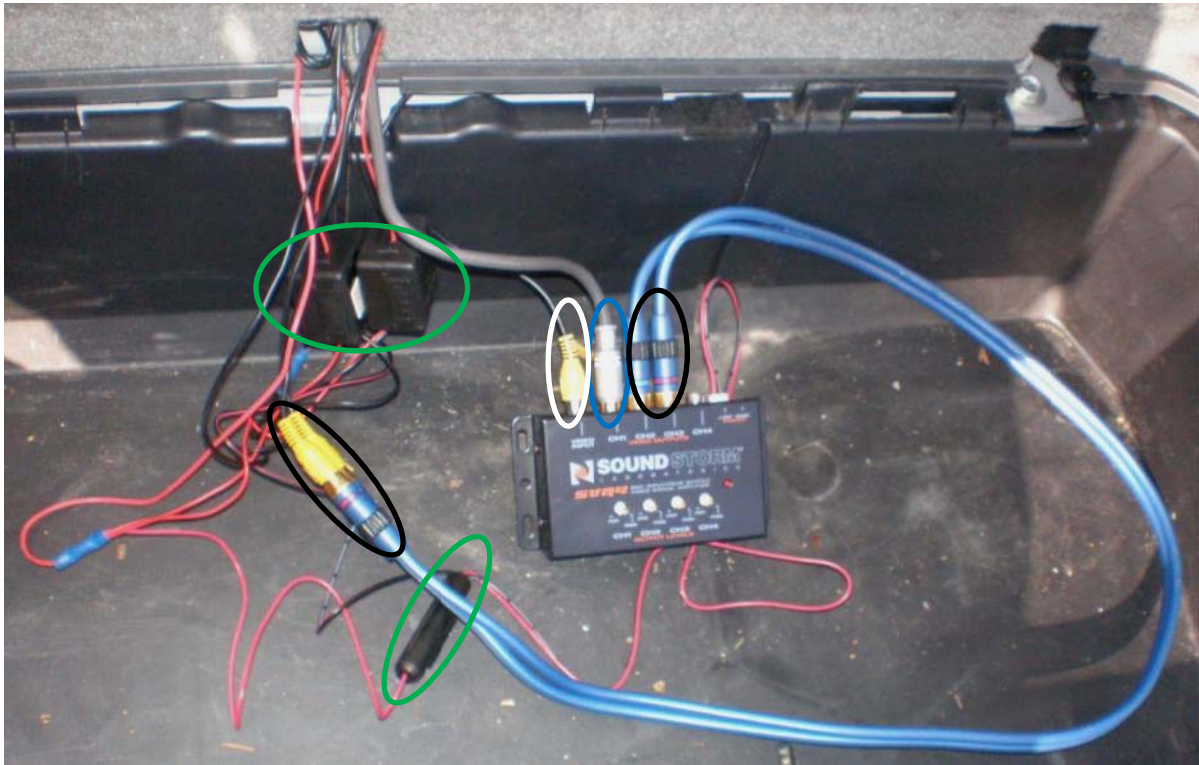
- the RCA wire from the center console input selector (iPod vs PS2) to the rear (for the video amplifier) (white circle) →
- Power and ground →
- the RCA from the rear hatch to the MFD ((I ran two just in case)) (blue circle) ←
- OUTPUT A/V (black plugs shown above near the RCA's in black circle) From Rear to console ←



3. Wire it up

I spliced the power and ground wire running from the ACC console 3 ways. I wired all the power into separate fuses, then into their respective devices. They are all controlled from one switch which is in the console.

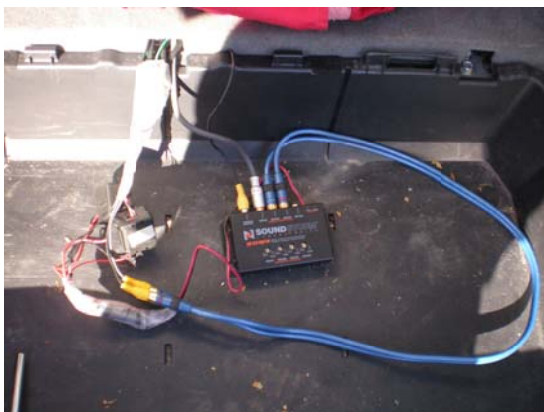
4. Plug it in! (and check it out)



Above you can see the

- Video In (white)
- MFD out (blue)
- LCD out (black)
- Fuses (green)

I tested everything at this point and I had some fuzz coming through on the MFD. I replaced the input (with the thin black wire and yellow plug) RCA with a high density RCA and everything was fine.



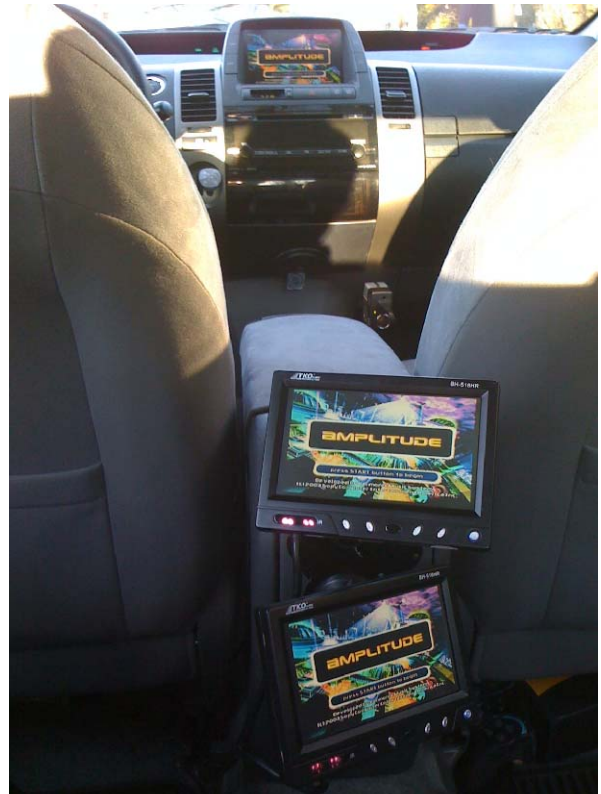
Here's another picture after some taping.

5. Mount the screens



One of the things that I liked about the TKO screen was that it came with this handy little mount. I didn't know if it was going to work or not, but It turned out perfect (for now.. until I attack it with fiberglass). You can see in the bottom left corner of the console where the wires are sticking out for the corner. After I mounted the brackets, I tested everything again, and then WRAPPED and PROTECTED my wires, especially the ones carrying power across the hybrid battery. I'm extremely happy with the final product.

Here's some screen shots.



Any questions.comments.ideas

martinisaacanywhere@gmail.com

