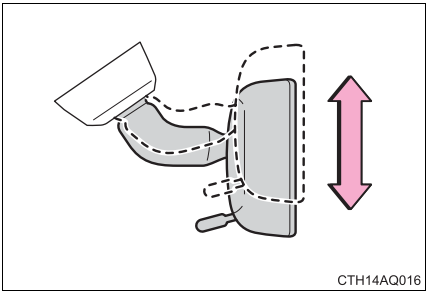


1-4. Adjustable components (seats, mirrors, steering wheel)

# Anti-glare inside rear view mirror

The rear view mirror's position can be adjusted to enable sufficient confirmation of the rear view in accordance with the driver's seating posture.

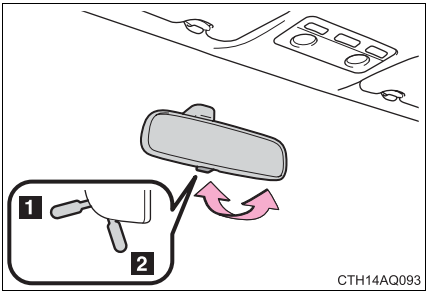
## Adjusting the height of rear view mirror



Adjust the height of the rear view mirror by moving it up and down.

## Anti-glare function

Reflected light from the headlamps of vehicles behind can be reduced by operating the lever.



- 1 Normal position
- 2 Anti-glare position