

Toyota Prius Electric Mode Kit

Thank you for your purchase of the Coastal Electric Mode Kit designed specifically for the Toyota Prius by Coastal Electronic Technologies, Inc.

Properly installed, this device will signal the Prius to operate as an electric only vehicle for short distances whenever the cruise control stalk is pulled toward driver (as when activating the cruise "cancel" feature) for **more than two seconds**. This two second delay will allow you to use the cruise control cancel feature during normal operation without engaging the electric mode. For your convenience, the added feature only becomes active if you hold the stalk in the cruise cancel position for more than two seconds. Programing already present in your car will control the operation of the "electric only" mode and will maintain proper battery charging and the timing of this feature automatically. Using the electric mode, you will be able to make short, low speed trips and easily demonstrate the electric feature to others without the engine ever starting.

EV mode operation is available when:

1. The car is powered on and the stalk is immediately pulled.
2. The stalk is pulled after the engine has completed it's warm-up cycle.
3. The speed of the car is below 34 mph.
4. The battery is in a suitably charged state (greater than three "bars").

The screen will automatically change to the "Energy" view when engaging this feature to display remaining battery power to the driver.

EV mode will cease (followed by three beeps) and the engine will restart when:

1. The stalk is pulled while in EV mode.
2. The driver accelerates quickly.
3. The speed increases to 34 mph.
4. The battery is in need of recharging.

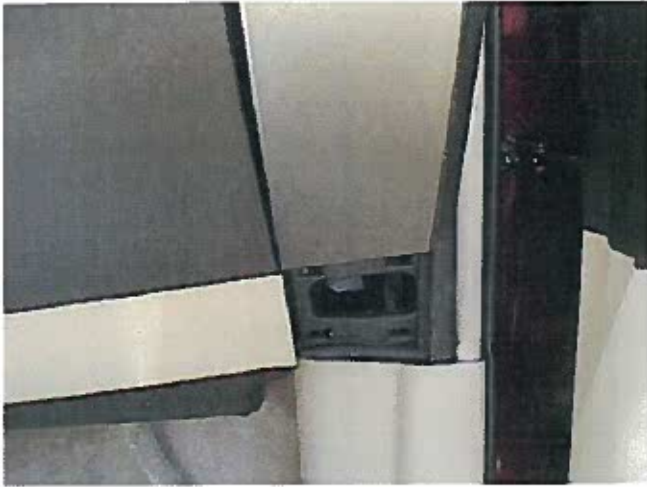
NECESSARY TOOLS: Small Common Screwdriver
Needlenose Pliers

PARTS: 3 tap connectors (1 extra)
1 sample tapped wire
Controller w/ attached wiring harness

At this time, Coastal Electronic Technologies, Inc. would like to recommend that you have this installation completed by a certified mechanic or someone familiar with automotive electronics. This installation, while not time consuming, does require careful attention to detail and precise following of installation instructions.

Coastal Electronic Technologies, Inc. accepts no responsibility for any outcomes due to the improper installation or use of this product!!

Installation Procedures



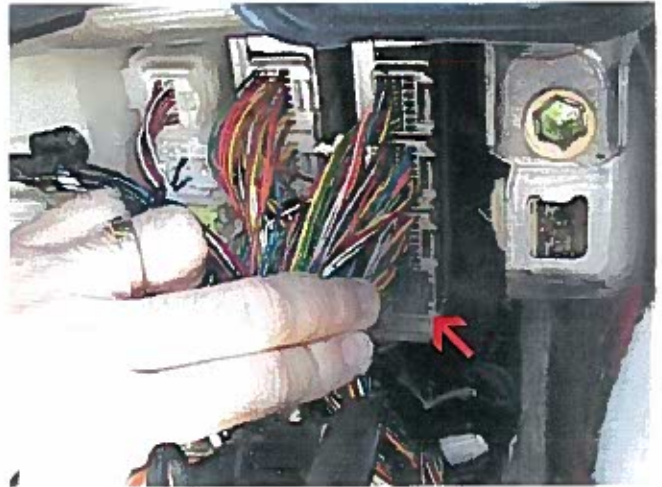
Step 1. Remove square trim piece located below A/C vent cover on passenger side. Use your fingers or a screwdriver to pop it free from it's clips.



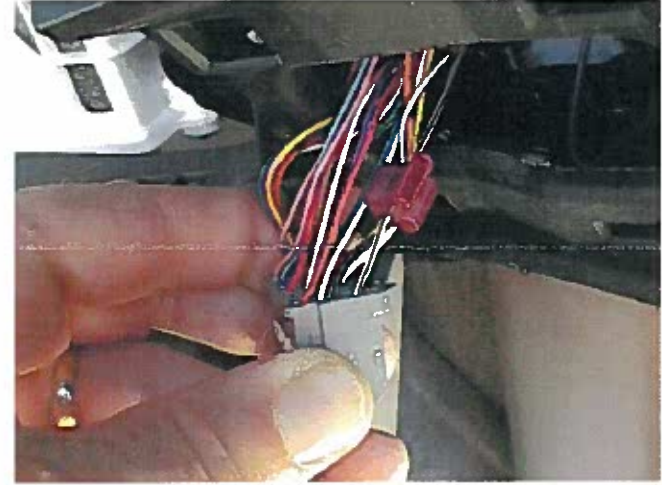
Step 2. Open upper glove box first. Then remove A/C vent cover. Pry bottom of vent loose first and then pull top free.



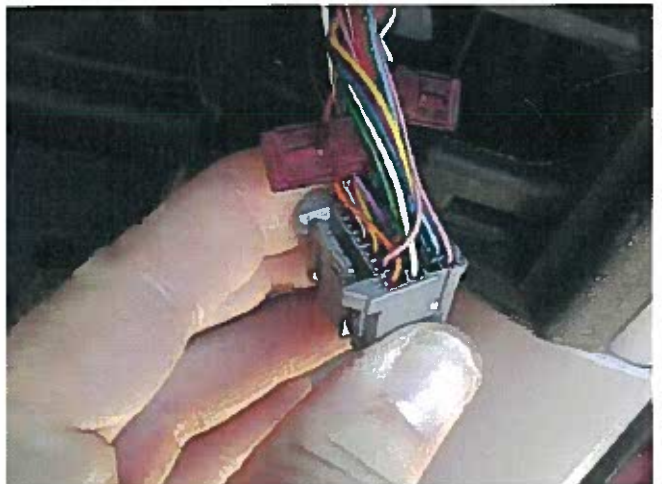
Step 3. Open lower glove box and pop free damper tube on side of box. Then squeeze sides of box and fully lower glove box to provide greater opening to computers.



Step 4. Locate bottom gray plug on pictured computer and remove by pressing down on tab and pulling free. Picture shown with plug removed.



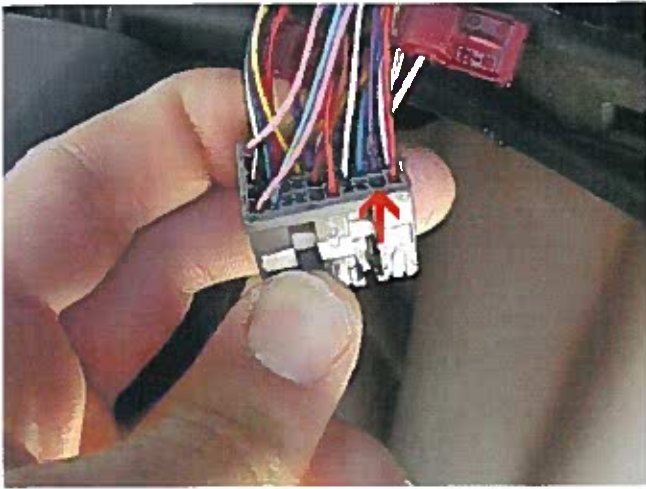
Step 5. Pull plug into view at bottom opening and place wire tap on White with Black Stripe wire on corner of plug. Refer to Diagram



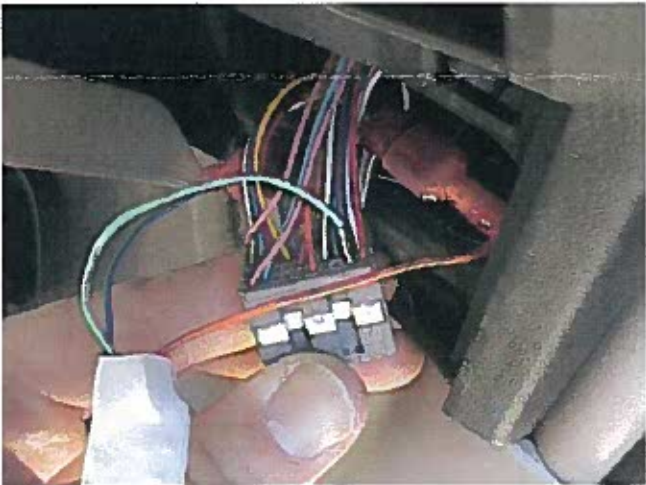
Step 6. Place tap on purple wire near center of plug. Refer to Diagram

Note: Do not turn power on to car while the plug is removed from the computer.

Installation Page 2



Step 7. Locate proper hole for insertion of receptacle pin. Also notice the white bar crossing the middle of the plug. This bar further locks the pins in place after they have been inserted. Using a small screwdriver or other sharp instrument, lift this bar slightly. On either side of the plug there is a slot where you can easily push the white bar outward. It only needs to move a fraction of an inch to allow insertion of another pin so don't try to take it all the way out.



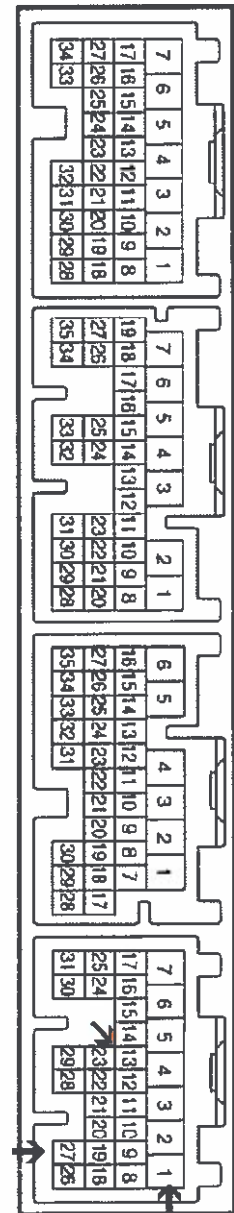
Step 8. Carefully look at the end of the unique receptacle pin attached to the control board of your kit. Identify the side of the pin where the metal is folded over the wire to make the crimp. To aid in insertion, this side of the pin should face inward away from the edge of the plug. Press the pin all the way in at the proper location. Use a sharp instrument (small screwdriver) to insure that it has been pressed fully into the seat. Then plug the other two wires into the taps you previously put in place. The Purple wire on the controller plugs into the tap on the Purple wire and the White wire connects to the White W/Black stripe wire. Now press down the white center bar to complete your installation. Note: Picture is shown with pin partially inserted to aid in clarity.

Step 9. Reinsert plug with attached controller back into computer. Raise lower glove box and reattach side damper. Line up top of A/C vent trim piece and push gently inward. Then, align bottom and finish pressing back into place. Reinsert square trim piece at lower corner of dash to complete your Electric Mode installation. Congratulations and Thank You for your trust in Coastal Electronic Technologies, Inc.!

**Diagram of
Computer Connections
Gray Plugs**

Purple wire
Pin 13

Insert Receptacle pin
into empty location 27
on plug



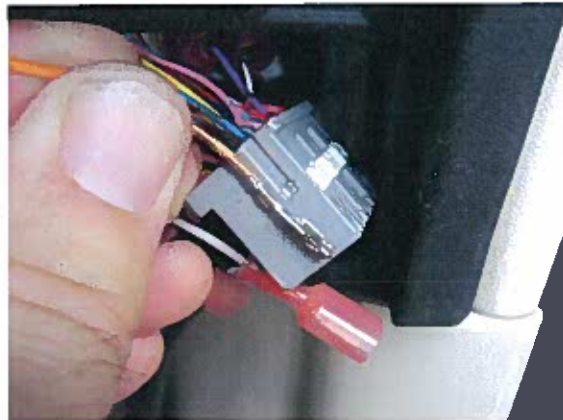
White with Black Stripe wire
Pin 1

Electric Mode Helpful Installation Hints

This page is provided to clarify some steps and help speed up your installation process :)



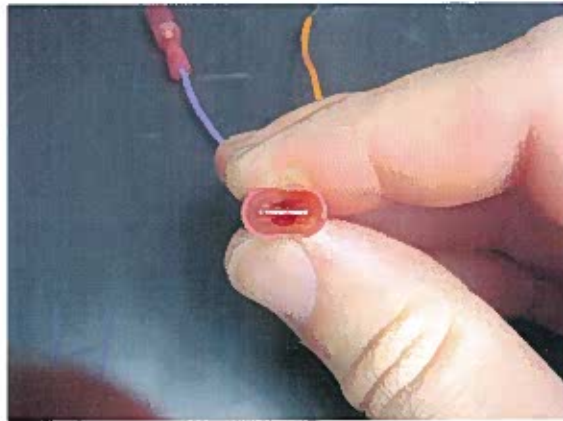
The picture above illustrates the lifting of the white bar and the small height it reaches when fully pressed upward with a sharp tool. Notice it is not a great distance, but it is necessary before the pin in location 27 can be inserted.



This picture demonstrates how deep the pin must be inserted to make contact. Measure yours in this manner so you can know how far to press it down. Use a sharp tool and press it fully down from the backside of the plug to reach this depth, then, press the white bar down to lock it in.



There are two purple wires on your plug. Double check that you have placed the tap for the purple wire on the CORRECT purple wire. Connect to the purple wire at location 13 as described in your instructions and NOT the one in location 19.



Examine the connectors in your kit and insure that the blade is straight and centered before plugging it into the red taps you have already placed on the two wires described in your instructions. If the blade is not centered, it may appear that it plugs in correctly, but in fact, has not.

Note: The red taps in your kit, when clicked together with a pair of pliers, provide firm and reliable connections for your kit wires. Once in place, it is not suggested to remove and reinstall them, especially in the same spot. If you find the need to redo a connection, please use the extra tap provided in your kit and select a different location on the wire to attach it.