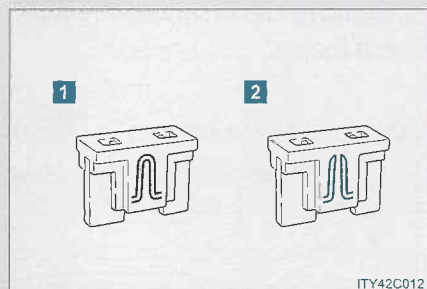


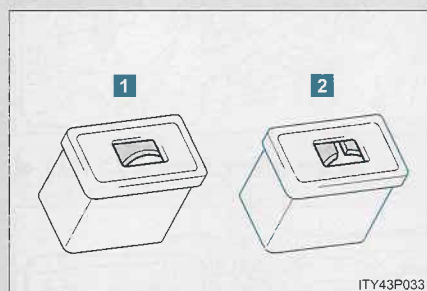
STEP 5 Check if the fuse has blown.

► Type A

**1** Normal fuse**2** Blown fuse

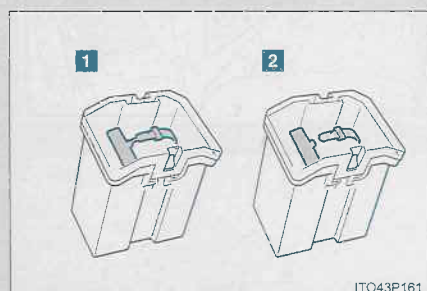
Replace it with one of an appropriate amperage rating. The amperage rating can be found on the fuse box lid.

► Type B

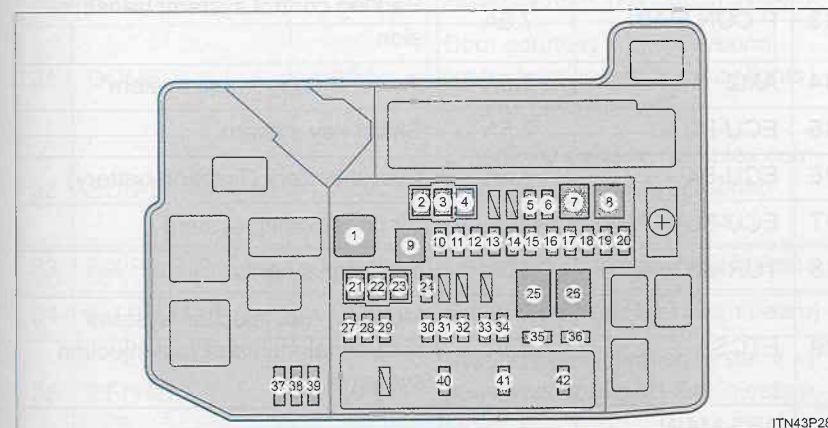
**1** Normal fuse**2** Blown fuse

Replace it with one of an appropriate amperage rating. The amperage rating can be found on the fuse box lid.

► Type C

**1** Normal fuse**2** Blown fuse

Contact your Toyota dealer.

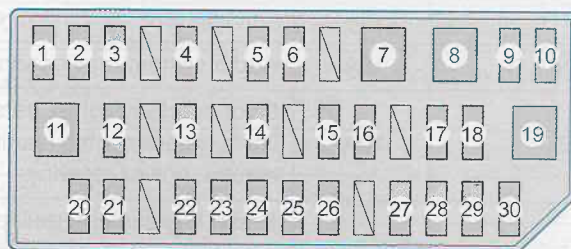
Fuse layout and amperage ratings**■ Engine compartment**

FUSE		Ampere	Circuit
1	DC/DC	125A	DC/DC converter
2	HTR	50A	Air conditioning system
3	CDS	30A	Electric cooling fans
4	RDI	40A	Electric cooling fans
5	ENG W/P	30A	Cooling system
6	ABS MAIN NO.2	7.5A	Anti-lock brake system
7	PTC1	50A	Air conditioning system
8	PTC2	50A	Air conditioning system
9	PTC3	50A	Air conditioning system
10	FUEL OPN	7.5A	Fuel filler door opener
11	IGCT	30A	PCU, IGCT NO.2, IGCT NO.3

FUSE		Ampere	Circuit
12	DC/DC-S	5A	Inverter and converter
13	P CON MAIN	7.5A	Parking control system, transmission
14	AM2	7.5A	Power management system
15	ECU-B2	7.5A	Smart key system
16	ECU-B4	7.5A	Hybrid battery (Traction battery)
17	ECU-B3	10A	Air conditioning system
18	TURN & HAZ	10A	Turn signal lights
19	ETCS	10A	Multiport fuel injection system/ sequential multiport fuel injection system
20	ABS MAIN NO.1	25A	Anti-lock brake system
21	P/I 2	40A	Parking control system, horn, right-hand headlight (low beam), left-hand headlight (low beam), back-up lights
22	ABS MTR 1	30A	Anti-lock brake system
23	ABS MTR 2	30A	Anti-lock brake system
24	H-LP HI MAIN	20A	H-LP HI RH, H-LP HI LH, headlight switch, daytime running light system
25	P/I 1	60A	IG2, EFI MAIN, BATT FAN
26	EPS	60A	Electric power steering
27	PCU	10A	Inverter and converter
28	IGCT NO.2	10A	Hybrid system, parking control system, power management system, inverter and converter

FUSE		Ampere	Circuit
29	MIR HTR	10A	Outside rear view mirror defoggers
30	RAD NO.1	15A	Audio system, navigation system
31	DOVE	10A	Door courtesy lights, personal lights, interior lights, vanity lights, electric power steering
32	ECU-B	7.5A	Smart key system, multiplex communication system, personal lights, gauges and meters
33	H-LP LH HI	10A	Left-hand headlight (high beam)
34	H-LP RH HI	10A	Right-hand headlight (high beam)
35	EFI NO.2	10A	Multiport fuel injection system/ sequential multiport fuel injection system
36	IGCT NO.3	10A	Cooling system
37	SPARE	30A	Spare fuses
38	SPARE	10A	Spare fuses
39	SPARE	7.5A	Spare fuses
40	EFI MAIN	20A	Multiport fuel injection system/ sequential multiport fuel injection system, EFI NO.2
41	BATT FAN	20A	Battery cooling fan
42	IG2	20A	Multiport fuel injection system/ sequential multiport fuel injection system, MET-IGN, IGN, power management system

■ Left side instrument panel



ITO43P133

	FUSE	Ampere	Circuit
1	CIG	15A	Power outlets
2	ECU-ACC	10A	Multiplex communication system, outside rear view mirrors, driver support system, audio system, navigation system
3	PWR OUTLET	15A	Power outlets
4	SEAT HTR FR	10A	Seat heater
5	SEAT HTR FL	10A	Seat heater
6	DOOR NO.1	25A	Power door lock system
7	PSB	30A	No circuit
8	PWR SEAT FR	30A	No circuit
9	DBL LOCK	25A	No circuit
10	FR FOG	15A	Fog lights
11	PWR SEAT FL	30A	No circuit
12	OBD	7.5A	On-board diagnosis system
13	RR FOG	7.5A	No circuit
14	STOP	10A	Stop lights, high mounted stop-light, brake system, power management system, driver support system

	FUSE	Ampere	Circuit
15	P FR DOOR	25A	Power windows
16	D FR DOOR	25A	Power windows
17	DOOR RR	25A	Power windows
18	DOOR RL	25A	Power windows
19	S/ROOF	30A	No circuit
20	ECU-IG NO.1	10A	Electric cooling fans, multiplex communication system
21	ECU-IG NO.2	10A	Driver support system, yaw rate & G sensor, brake system, electric power steering, navigation system, tire pressure warning system, seat belt pretensioners, audio system, emergency flashers, turn signal lights, windshield wipers
22	GAUGE	10A	Front passenger's seat belt reminder light, gauges and meters
23	A/C	10A	Air conditioning system, Remote Air Conditioning System
24	WASHER	15A	Windshield washer

	FUSE	Ampere	Circuit
25	RR WIP	20A	Rear window wiper and washer
26	WIP	30A	Windshield wipers
27	MET	7.5A	Gauges and meters
28	IGN	10A	Brake system, driver support system, multiport fuel injection system/sequential multiport fuel injection system, SRS airbag system, occupant detection sensor, power management system, smart key system
29	PANEL	10A	Air conditioning system, emergency flashers, seat heaters, transmission, "P" position switch, navigation system, Remote Air Conditioning System, front passenger's seat belt reminder light, glove box light, clock, audio system
30	TAIL	10A	Parking lights, tail lights, license plate lights, fog lights, side marker lights

■ After a fuse is replaced

- If the lights do not turn on even after the fuse has been replaced, a bulb may need replacement. (→P. 404)
- If the replaced fuse blows again, have the vehicle inspected by your Toyota dealer.

■ If there is an overload in the circuits

The fuses are designed to blow before the entire wiring harness is damaged.

⚠ CAUTION

■ To prevent system breakdowns and vehicle fire

Observe the following precautions.
Failing to do so may cause damage, and possibly a fire or injury.

- Never use a fuse of a higher amperage rating than indicated, or use any other object in place of a fuse.
- Always use a genuine Toyota fuse or equivalent.
Never replace a fuse with a wire, even as a temporary fix.
This can cause extensive damage or even fire.
- Do not modify fuses or the fuse box.

⚠ NOTICE

■ Before replacing fuses

Have the cause of electrical overload determined and repaired by your Toyota dealer.