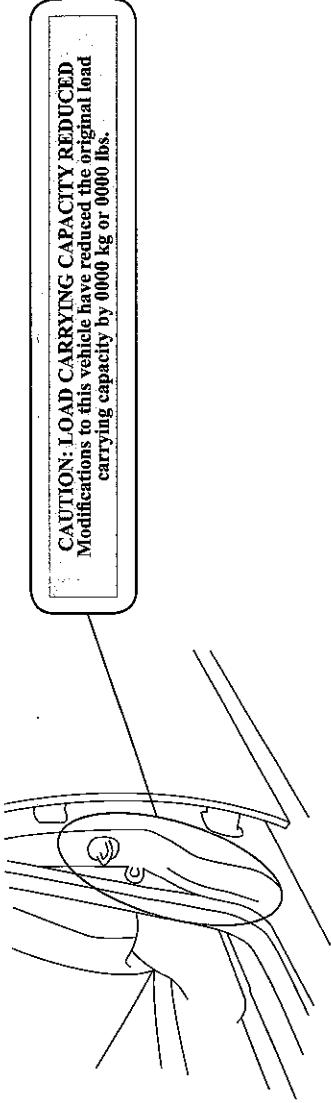


Addendum Label Installation Instructions

I. Affected Vehicles that currently have an Addendum Label

1. Locate the Addendum Label currently installed on your vehicle, see illustrations below.

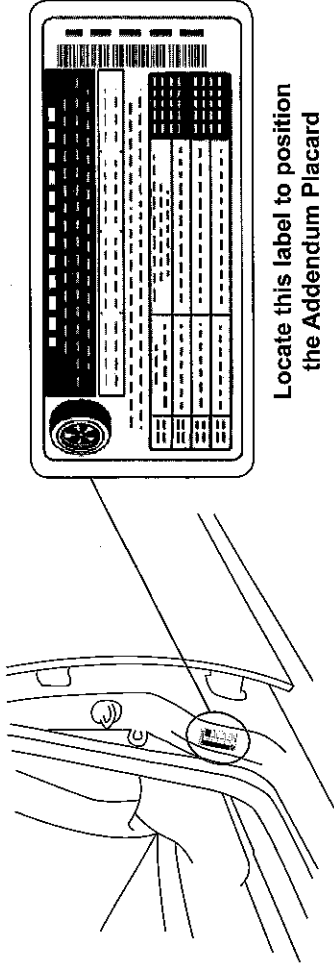


Addendum Label Location (may vary by model)

2. Clean the Addendum Label currently on your vehicle and the surrounding areas with a clean, dry cloth to remove any dust or dirt.
3. Affix the new Addendum label on top of the current label installed on your vehicle.

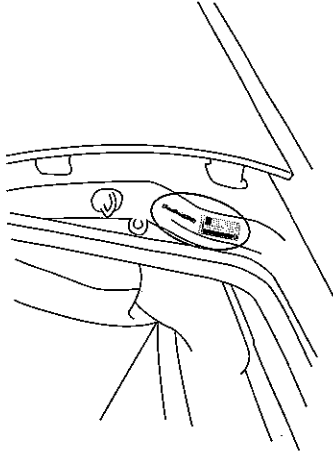
II. Affected Vehicles that currently DO NOT have an Addendum Label

1. Locate the Tire and Loading Information Placard currently installed on your vehicle, see illustrations below.
2. Locate an area on the driver door post that meets the following criteria:



Tire and Loading Information Label Location (may vary by model)

- Large enough for the Addendum Label to be installed without overlapping any other labels
  - As close to the Tire and Loading Information Placard as possible
3. Clean the area located in the previous step with a clean dry cloth. Make sure to clean an area slightly larger than the Addendum Label
  4. Affix the new Addendum Label to the area indicated above.



(Example)