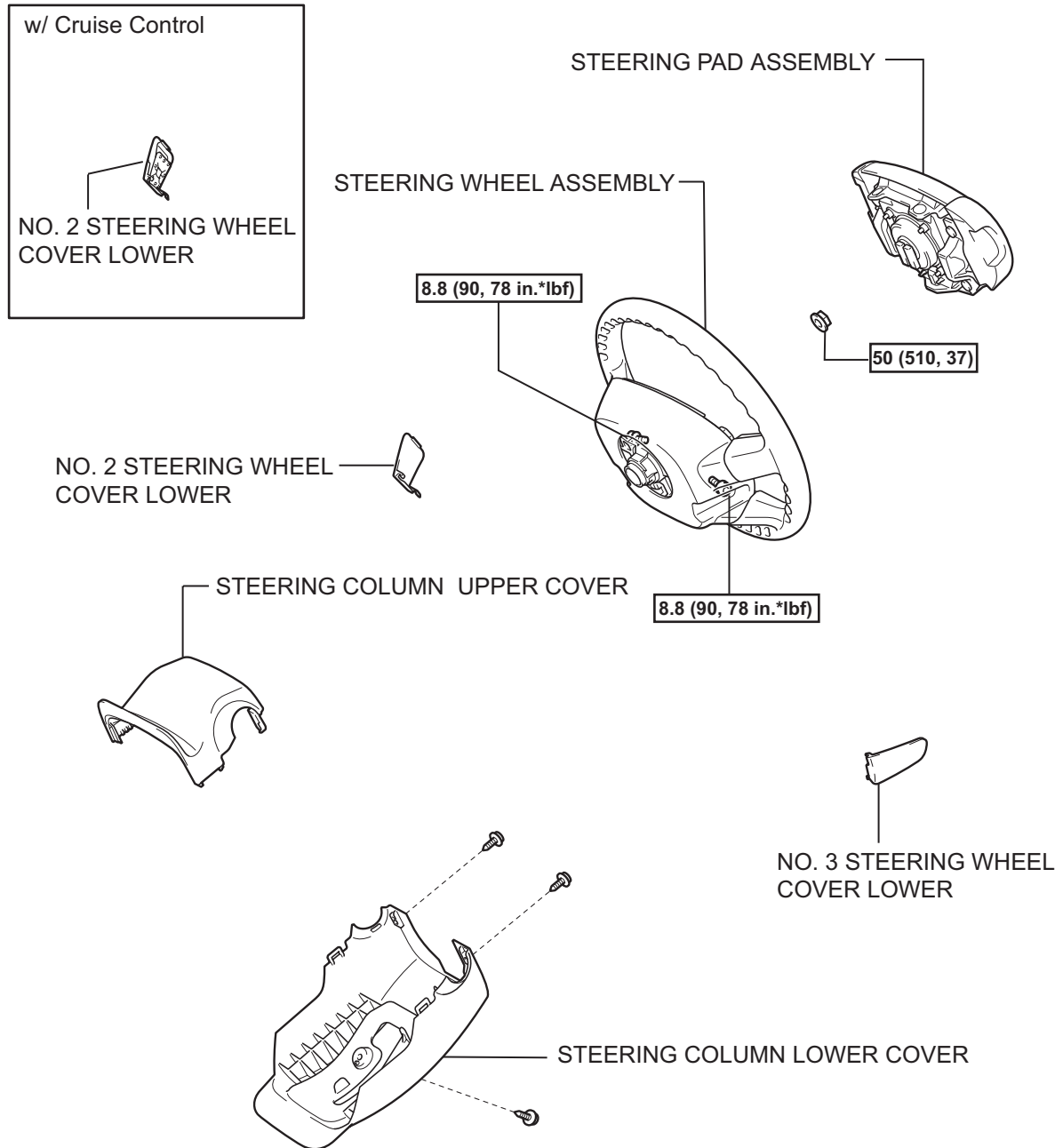
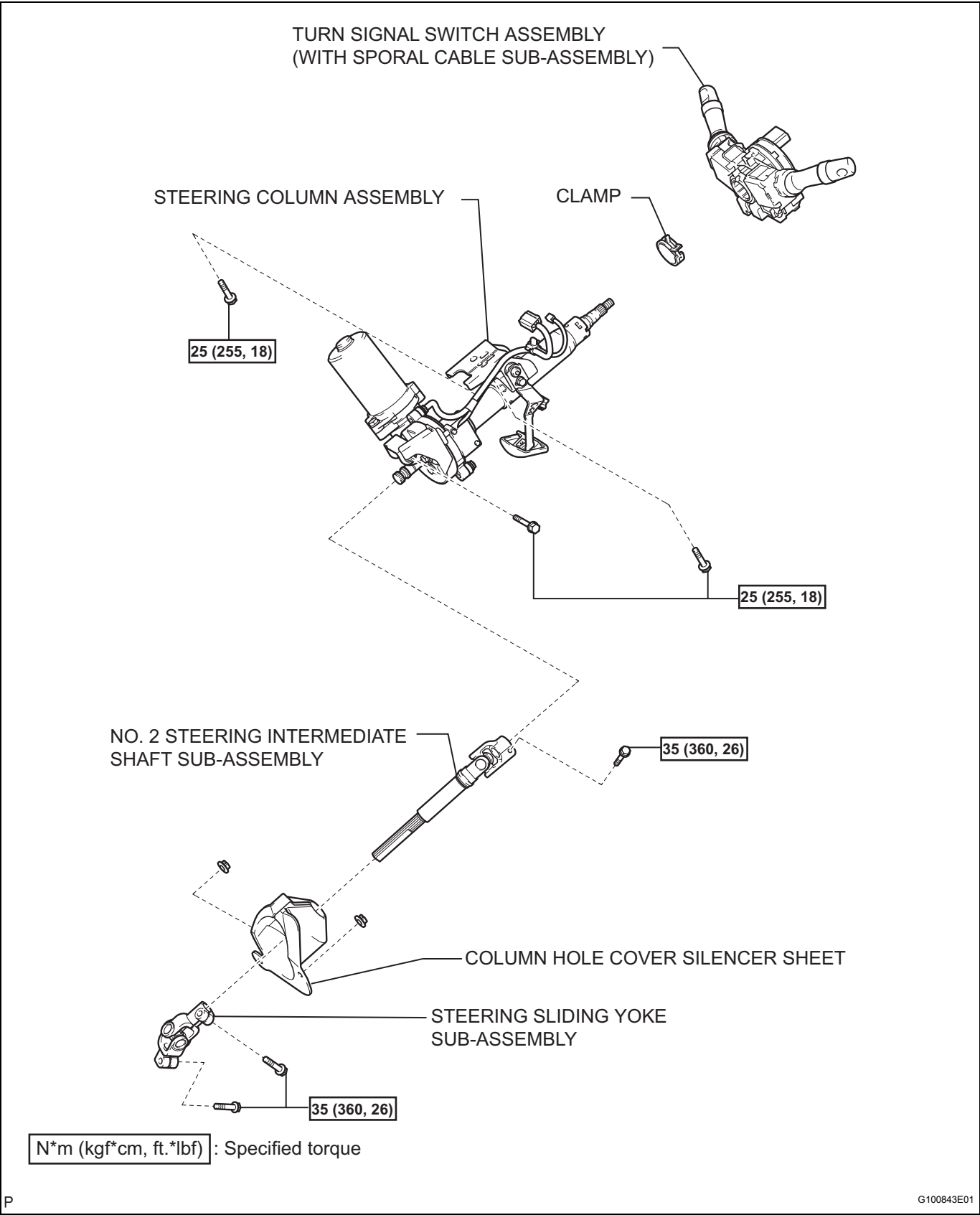


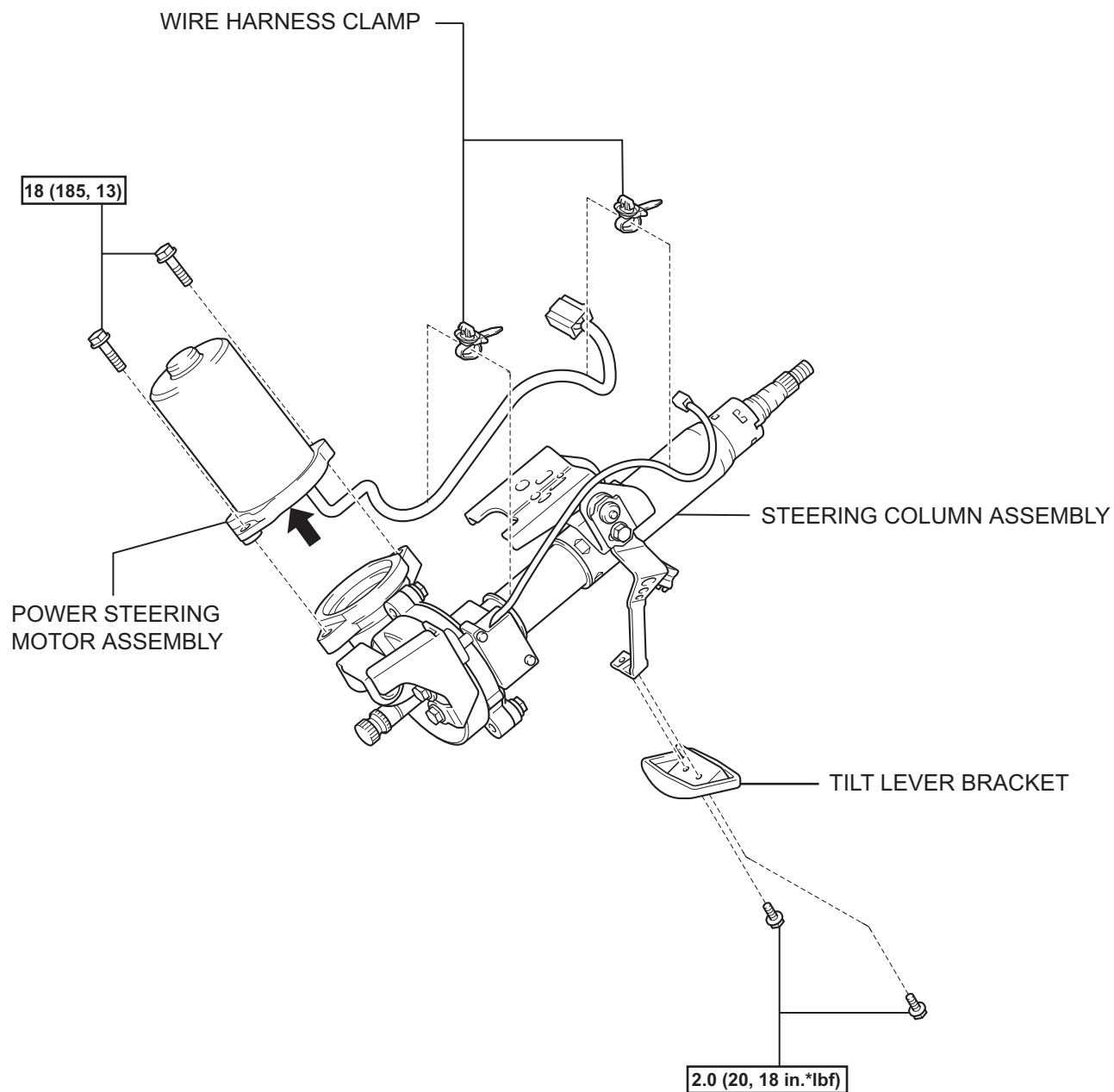
STEERING COLUMN ASSEMBLY

COMPONENTS



N*m (kgf*cm, ft.*lbf) : Specified torque



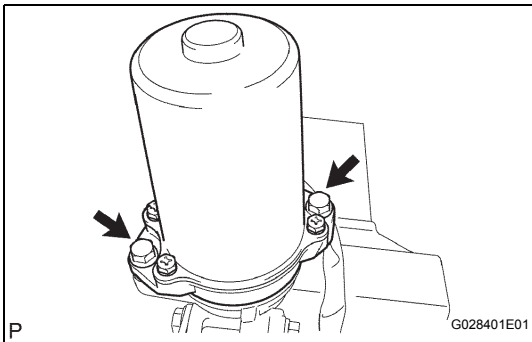


N*m (kgf*cm, ft.*lbf) : Specified torque

← MP grease

**40. REMOVE STEERING COLUMN ASSEMBLY**

- (a) Disconnect the connectors and wire harness clamps from the steering column.
- (b) Remove the 3 bolts and steering column.

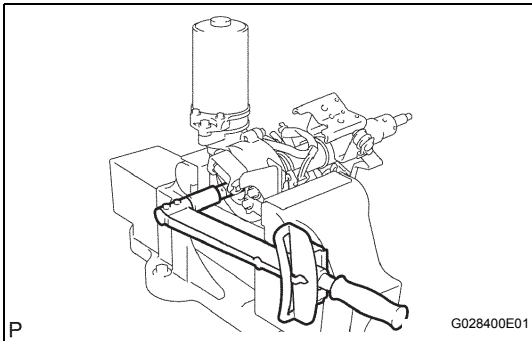
**DISASSEMBLY****1. REMOVE POWER STEERING MOTOR ASSEMBLY**

- (a) Remove the 2 clamps from the power steering motor and torque sensor wire harness.

NOTICE:

Do not damage the clamps.

- (b) Remove the 2 bolts and power steering motor.

**INSPECTION****1. INSPECT STEERING COLUMN ASSEMBLY**

- (a) Using SST and a torque wrench, measure the main shaft turning torque.

SST 09616-00011

Standard turning torque:

0.4 to 1.1 N*m (4 to 11 kgf*cm, 4 to 10 in.*lb) (2 sec./turn)

- (b) If turning torque is out of the specification, remove the motor and remeasure.

Reference turning torque:

0.1 to 0.6 N*m (1 to 6 kgf*cm, 1 to 5 in.*lb) (2 sec./turn) (motorless)

If turning torque is within the specification, replace the motor with a new one.

If turning torque is out of the specification, replace the steering column assembly with a new one.

REASSEMBLY

1. INSTALL POWER STEERING MOTOR ASSEMBLY

- Secure the steering column in a vise so that the motor installation part is horizontal.
- Apply MP grease to the serrated part of the motor and install it to the steering column.

Reference amount:

0.3 g (0.0106 oz.)

- Using SST, turn the steering main shaft 2 or 3 turns at a rate of one turn per second to seat the motor, and temporarily tighten the 2 bolts.

NOTICE:

- **Make sure that the motor is installed vertically and sits under its own weight.**
- **Temporarily tighten the bolts with the motor properly seated.**

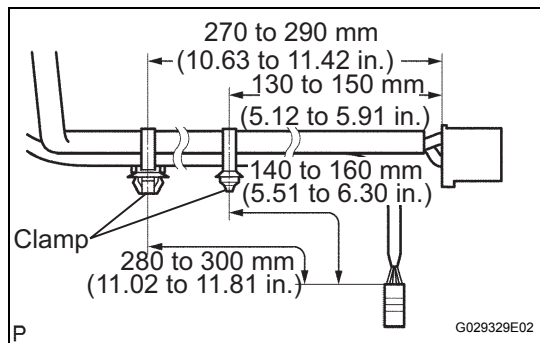
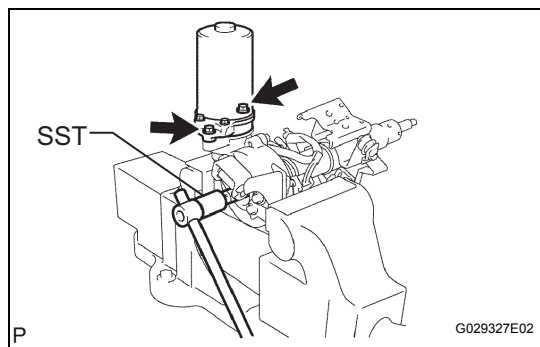
- Fully tighten the 2 bolts.

Torque: 18 N*m (185 kgf*cm, 13 ft.*lbf)

NOTICE:

Do not apply force to the motor in the horizontal direction when tighten the bolts.

- Hold the wire harness for the power steering motor and torque sensor wire harness with the 2 clamps and vinyl tape as shown in the illustration.



INSTALLATION

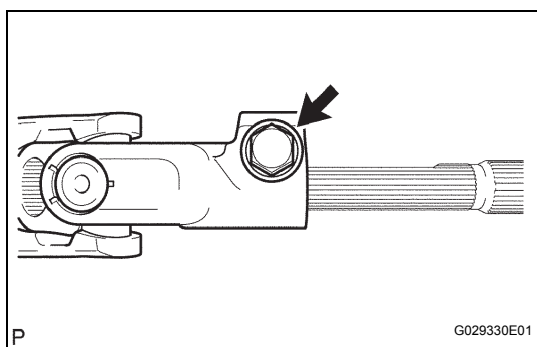
1. INSTALL STEERING COLUMN ASSEMBLY

- Install the steering column with the 3 bolts.

Torque: 25 N*m (255 kgf*cm, 18 ft.*lbf)

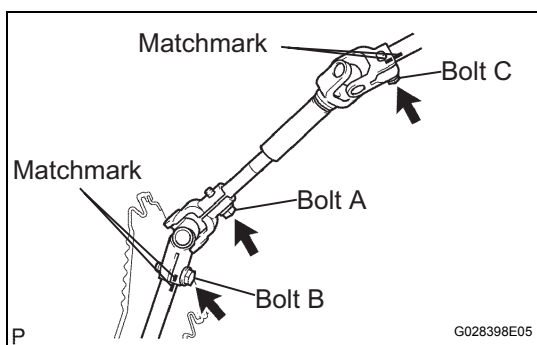
- Connect the connectors and wire harness clamps to the steering column.





2. INSTALL STEERING SLIDING YOKE SUB-ASSEMBLY

- Temporarily install the steering sliding yoke sub-assembly to the steering intermediate shaft with the bolt.



3. INSTALL STEERING INTERMEDIATE SHAFT SUB-ASSEMBLY

- Align the matchmarks on the steering intermediate shaft assembly and steering column and install them with the bolt labeled C.

Torque: 35 N*m (360 kgf*cm, 26 ft.*lbf)

- Align the matchmark on the steering intermediate shaft and steering intermediate shaft and install them with the bolt labeled B.

Torque: 35 N*m (360 kgf*cm, 26 ft.*lbf)

- Tighten the bolt labeled A on the steering sliding yoke.

Torque: 35 N*m (360 kgf*cm, 26 ft.*lbf)

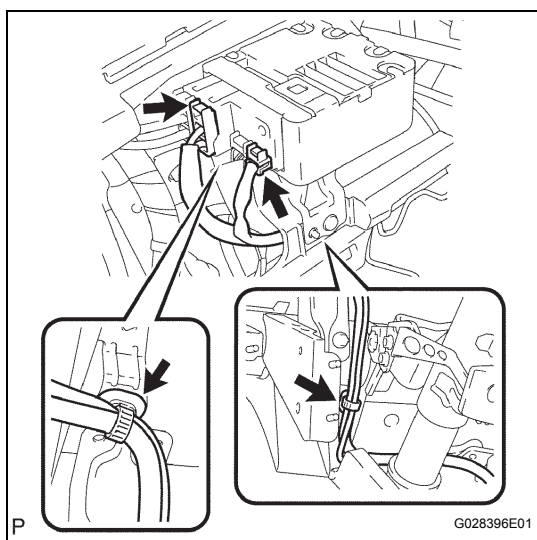
4. INSTALL COLUMN HOLE COVER SILENCER SHEET

5. INSTALL FRONT FLOOR FOOTREST LH

- Attach the 2 clips to install the front floor footrest.

6. INSTALL POWER STEERING ECU ASSEMBLY

- Connect the 2 steering column connectors to the power steering ECU.
- Install the clamp holding the power steering motor and torque sensor wire harness on the bottom surface of the power steering computer.
- Install the torque sensor wire harness clamp to the instrument panel reinforcement.
- Make sure that the power steering motor and torque sensor wire harnesses do not interfere with other parts while tilting up and down the steering column.



7. INSTALL INSTRUMENT PANEL PASSENGER AIRBAG ASSEMBLY (See page [RS-286](#))

8. DISCONNECT PASSENGER AIRBAG CONNECTOR (See page [RS-287](#))

9. INSTALL FRONT PILLAR GARNISH ASSEMBLY LH (See page [IR-18](#))

10. INSTALL FRONT PILLAR GARNISH ASSEMBLY RH (See page [IR-17](#))

11. INSTALL FRONT PILLAR GARNISH CORNER PIECE LH (See page [IR-19](#))

12. INSTALL FRONT PILLAR GARNISH CORNER PIECE RH (See page [IR-19](#))

13. **INSTALL NO. 1 INSTRUMENT PANEL SPEAKER PANEL SUB-ASSEMBLY (w/ JBL Sound System)**
14. **INSTALL GLOVE COMPARTMENT DOOR** (See page [IP-12](#))
15. **INSTALL GLOVE COMPARTMENT DOOR ASSEMBLY** (See page [IP-12](#))
16. **INSTALL GLOVE COMPARTMENT DOOR STOPPER SUB-ASSEMBLY**
17. **INSTALL MULTI-DISPLAY** (See page [NS-173](#))
18. **INSTALL NO. 2 INSTRUMENT PANEL REGISTER ASSEMBLY** (See page [IP-12](#))
19. **INSTALL NO. 4 INSTRUMENT PANEL REGISTER ASSEMBLY** (See page [IP-12](#))
20. **INSTALL NO. 3 INSTRUMENT PANEL REGISTER ASSEMBLY** (See page [IP-13](#))
21. **INSTALL INSTRUMENT PANEL FINISH PANEL SUB-ASSEMBLY** (See page [IP-13](#))
22. **INSTALL NO. 1 INSTRUMENT PANEL REGISTER ASSEMBLY** (See page [IP-13](#))
23. **INSTALL COWL SIDE TRIM BOARD RH** (See page [IR-19](#))
24. **INSTALL COWL SIDE TRIM BOARD LH** (See page [IR-19](#))
25. **INSTALL FRONT DOOR INSIDE SCUFF PLATE LH** (See page [IR-18](#))
26. **INSTALL FRONT DOOR INSIDE SCUFF PLATE RH** (See page [IR-18](#))
27. **INSTALL SPIRAL CABLE SUB-ASSEMBLY** (See page [RS-282](#))
28. **INSPECT SPIRAL CABLE SUB-ASSEMBLY** (See page [RS-282](#))
29. **INSTALL TURN SIGNAL SWITCH ASSEMBLY**
 - (a) Install the turn signal switch to the steering column with the clamp.
30. **INSTALL STEERING COLUMN COVER**
 - (a) Engage the 4 claws to install the steering column upper cover and steering column lower cover.
HINT:
Fully tilt down the steering column when installing the steering column upper cover and fully tilt it up when installing the steering column cover.
31. **INSTALL TILT LEVER BRACKET**
 - (a) Install the tilt level bracket with the 2 screws.
Torque: 2.0 N*m (20 kgf*cm, 18 in.*lbf)

32. INSPECT STEERING WHEEL CENTER POINT**HINT:**

When the steering wheel is not properly centered, remove and refit to center.

33. INSTALL STEERING WHEEL ASSEMBLY

(a) Align the matchmarks on the steering wheel and steering main shaft.

(b) Install the steering wheel with the set nut.

Torque: 50 N*m (510 kgf*cm, 37 ft.*lbf)

34. INSTALL STEERING PAD ASSEMBLY (See page [RS-273](#))**35. CONNECT CABLE TO BATTERY NEGATIVE TERMINAL****36. INSPECT STEERING PAD ASSEMBLY**

(a) Inspect the steering pad (see page [RS-271](#)).

37. INSTALL NO. 3 STEERING WHEEL LOWER COVER**38. INSTALL NO. 2 STEERING WHEEL LOWER COVER****39. INSTALL REAR NO. 3 FLOOR BOARD ASSEMBLY****40. INSTALL REAR DECK FLOOR BOX****41. INSTALL REAR NO. 2 FLOOR BOARD****42. INSPECT SRS WARNING LIGHT**

(a) Inspect SRS warning light (see page [RS-31](#)).

43. PERFORM CALIBRATION

(a) Perform calibration (see page [PS-13](#)).

44. PERFORM INITIALIZATION

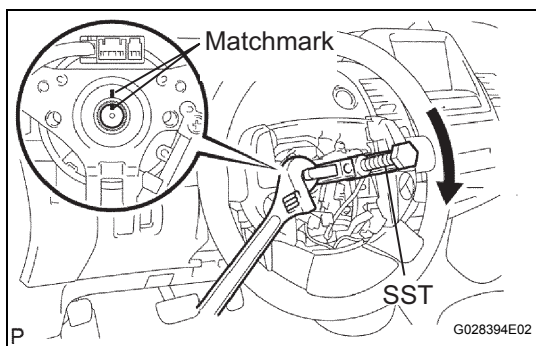
(a) Perform initialization (see page [IN-34](#)).

NOTICE:

Certain systems need to be initialized after disconnecting and reconnecting the cable from the negative (-) battery terminal.

REMOVAL

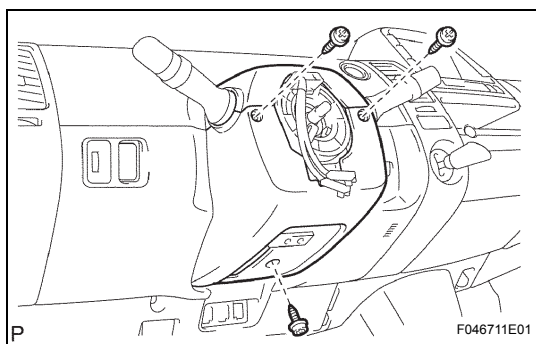
1. REMOVE NO. 2 REAR FLOOR BOARD
2. REMOVE REAR DECK FLOOR BOX
3. REMOVE NO. 3 REAR FLOOR BOARD ASSEMBLY
4. DISCONNECT CABLE FROM NEGATIVE BATTERY TERMINAL
CAUTION:
Wait at least 90 seconds after disconnecting the cable from the negative (-) battery terminal to prevent airbag and seat belt pretensioner activation.
5. PLACE FRONT WHEELS FACING STRAIGHT AHEAD
6. REMOVE NO. 2 STEERING WHEEL COVER LOWER
7. REMOVE NO. 3 STEERING WHEEL COVER LOWER
8. REMOVE STEERING PAD ASSEMBLY (See page [RS-272](#))



9. REMOVE STEERING WHEEL ASSEMBLY
 - (a) Remove the nut and put matchmarks on the steering wheel and steering main shaft.
 - (b) Using SST, remove the steering wheel.
SST 09950-50013 (09951-05010, 09952-05010, 09953-05020, 09954-05021)

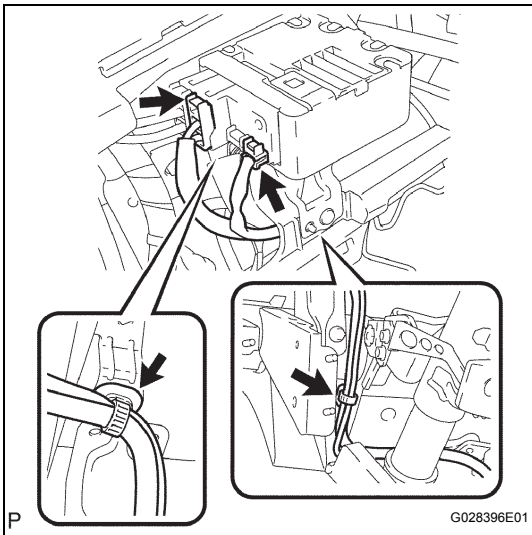


10. REMOVE TILT LEVER BRACKET
 - (a) Remove the 2 screws and tilt lever bracket.



11. REMOVE STEERING COLUMN COVER
 - (a) Detach the 4 claws and remove the 3 screws. Then remove the steering column lower cover and the steering column upper cover.
12. REMOVE TURN SIGNAL SWITCH ASSEMBLY
 - (a) Remove the clamp and remove the turn signal switch from the steering column.
13. REMOVE SPIRAL CABLE SUB-ASSEMBLY (See page [RS-282](#))
14. REMOVE FRONT DOOR INSIDE SCUFF PLATE LH (See page [IR-7](#))

15. REMOVE FRONT DOOR INSIDE SCUFF PLATE RH
(See page [IR-7](#))
16. REMOVE COWL SIDE TRIM BOARD LH (See page [IR-7](#))
17. REMOVE COWL SIDE TRIM BOARD RH (See page [IR-7](#))
18. REMOVE NO. 1 INSTRUMENT PANEL REGISTER ASSEMBLY (See page [IP-5](#))
19. REMOVE LOWER INSTRUMENT PANEL FINISH PANEL SUB-ASSEMBLY (See page [IP-6](#))
20. REMOVE UPPER INSTRUMENT PANEL FINISH PANEL SUB-ASSEMBLY (See page [IP-6](#))
21. REMOVE NO. 3 INSTRUMENT PANEL REGISTER ASSEMBLY (See page [IP-6](#))
22. REMOVE NO. 4 INSTRUMENT PANEL REGISTER ASSEMBLY (See page [IP-6](#))
23. REMOVE NO. 2 INSTRUMENT PANEL REGISTER ASSEMBLY (See page [IP-7](#))
24. REMOVE MULTI-DISPLAY (See page [NS-173](#))
25. REMOVE GLOVE COMPARTMENT DOOR STOPPER SUB-ASSEMBLY (See page [IP-7](#))
26. REMOVE GLOVE COMPARTMENT DOOR ASSEMBLY (See page [IP-7](#))
27. REMOVE GLOVE COMPARTMENT DOOR (See page [IP-7](#))
28. REMOVE NO. 1 INSTRUMENT PANEL SPEAKER PANEL SUB-ASSEMBLY (w/ JBL Sound System)
29. REMOVE FRONT PILLAR GARNISH CORNER PIECE RH (See page [IR-7](#))
30. REMOVE FRONT PILLAR GARNISH CORNER PIECE LH (See page [IR-7](#))
31. REMOVE FRONT PILLAR GARNISH ASSEMBLY LH (See page [IR-8](#))
32. REMOVE FRONT PILLAR GARNISH ASSEMBLY RH (See page [IR-8](#))
33. DISCONNECT PASSENGER AIRBAG CONNECTOR (See page [RS-286](#))
34. REMOVE INSTRUMENT PANEL PASSENGER AIRBAG ASSEMBLY (See page [RS-286](#))

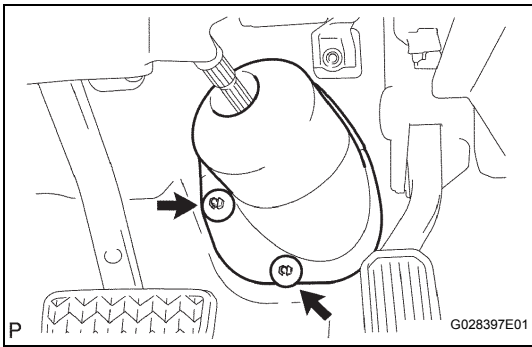


35. DISCONNECT POWER STEERING ECU ASSEMBLY

- Disconnect the torque sensor wire harness clamp from the bottom surface of the power steering ECU.
- Disconnect the torque sensor wire harness clamp from the instrument panel reinforcement.
- Disconnect the 2 steering column connectors from the power steering ECU.

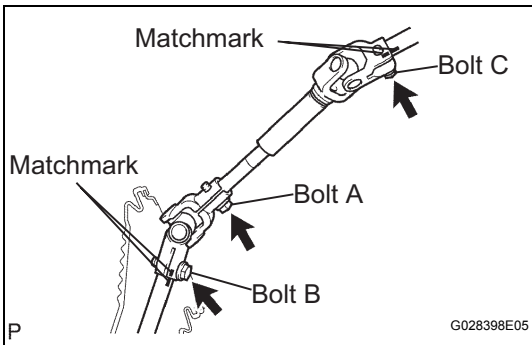
36. REMOVE FRONT FLOOR FOOTREST LH

- Using a flat head screwdriver, pull the front floor footrest forward, detach the 2 clips, and remove the front floor footrest.



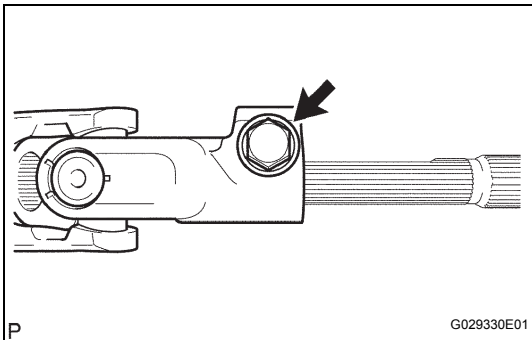
37. REMOVE COLUMN HOLE COVER SILENCER SHEET

- Fold back the floor carpet and remove the 2 clips and column hole cover silencer sheet.



38. REMOVE NO. 2 STEERING INTERMEDIATE SHAFT SUB-ASSEMBLY

- Loosen the bolt labeled A on the steering sliding yoke.
- Put matchmarks on the steering intermediate shaft and steering intermediate shaft.
- Remove the bolt labeled B and separate the steering intermediate shaft from the steering intermediate shaft.
- Put matchmarks on the steering intermediate shaft and steering column.
- Remove the bolt labeled C and separate the steering intermediate shaft from the steering column.



39. REMOVE STEERING SLIDING YOKE SUB-ASSEMBLY

- Remove the bolt and steering sliding yoke from the steering intermediate shaft.