

AUSTRALIAN MOTOR VEHICLE CERTIFICATION BOARD
Comprising Commonwealth, State and Territory Authorities

CIRCULAR 0 - 14 - 4

SINGLE UNIFORM TYPE INSPECTION (SUTI) MANUAL
FOR THIRD EDITION AUSTRALIAN DESIGN RULES (ADRs)

7.0 TAXI REQUIREMENTS

The dimensional and other requirements outlined below and detailed in Table 7.1 shall be met by any motor vehicle model which is being proposed for registration as a taxi. Individual vehicles may be subject to further inspection by the appropriate state or territory authorities prior to registration and licensing for use as a taxi.

7.1 Passenger Seating Capacity

The seating accommodation for adult persons excluding the driver and assessed using the seating template shall be as indicated in Table 7.1.

7.2 Seating Positions

The following method of assessment may be used to evaluate the adequacy of any seating position.

- Where the seat is adjustable, it shall be set in the rearmost and lowest position. Adjustable seats ahead of the seat in question shall be also in their rearmost and lowest positions and any adjustable seatbacks set 20 degrees rearward of vertical.

- The template shown in Figure 7.1 shall be placed in the seating position so that hole 'C' lies above the centreline of the seating position. (Note that the centrelines of individual seating positions must be at least 400 mm apart). The template shall be placed on the seat with point 'R' contacting the seatback whilst edge 'F' is resting on the floor of the vehicle.

- Element 'B' shall be adjusted so that it just contacts the back of the seat in front, or other obstruction whichever is rearmost.

- The inboard edge of element 'A' shall not point forwards and towards the centreline of the vehicle and the outboard edge of element 'A' shall not point forwards and away from the centreline of the vehicle.

- The seat cushions shall be visible along the full length of both slots marked 'S' when viewed from vertically above.

- It shall be possible to lift point 'R' until element 'A' is horizontal, without fouling the seat back of the seating position in question or the back of the seat in front, or other obstruction whichever is rearmost.

7.3 Ceiling Height Over Seat

The interior height of the vehicle's ceiling above any undepressed seat cushion measured vertically above the intersection of the seat cushion and the backrest shall be as shown in Table 7.1.

7.4 Shoulder Width

To provide passenger shoulder width, the interior width of the vehicle shall be measured across the vehicle in the plane passing through the line 'H' and at the same slope as the seatback. At any distance up to 600 mm from the line 'H', the width shall be as shown in the Table 7.1.

7.5 Width of Door Opening

The width of door opening above and below the top of seat cushion shall be as shown in Table 7.1 for both passenger cars and van type vehicles.

7.6 Top of Seat Cushion to Top of Door Height

The height of the top of the door opening from the top of all seat cushions adjacent to such door opening shall be as shown in Table 7.1.

7.7 Floor to Top of Seat Height

The height of the undepressed seat cushion above the floor shall be as shown in Table 7.1.

7.8 Seat Width

The width of seating positions shall be as shown in Table 7.1.

7.9 Seat Depth

The depth of seating shall be as shown in Table 7.1.

7.10 Leg Room

The space between the back of the front seat and the front edge of the rear seat shall be as shown in Table 7.1.

7.11 Seat Cover Material

The seat cover material shall be non-absorbent.

7.12 Luggage Space

A suitable carrier, space or boot must be available at the rear of the vehicle for the carriage of luggage and goods.

7.13 Aisle Width

Where access to any passenger's seating position is by means of an aisle, the width shall be as shown in Table 7.1.

7.14 Entry Door Step Height Above Ground

The height of the lowest step of an entry door or the upper edge of any door sill above the ground shall be as shown in Table 7.1.

7.15 Entry Door Height

Where access through the door to any seating position requires the use of an aisle, the height of the entrance to be used by the passenger shall be as shown in Table 7.1.

7.16 Interior Height

Where access to any seating position requires a passenger to walk in the vehicle, the interior height from the vehicle's floor to its ceiling on the centre line of the aisle or access space shall be as shown in Table 7.1.

7.17 Opposite Facing Seats in Van Type Body

There shall be no obstruction horizontally forward of any point on the seat squab and the seat cushion for a distance as shown in the chart in the case of opposite facing seating positions.

7.18 Retractors/Lap-Sash Belts

Lap-sash belts incorporating emergency locking retractors shall be fitted to all outboard seating positions.

SINGLE UNIFORM TYPE INSPECTION MANUAL

TAXI REQUIREMENTS (*)

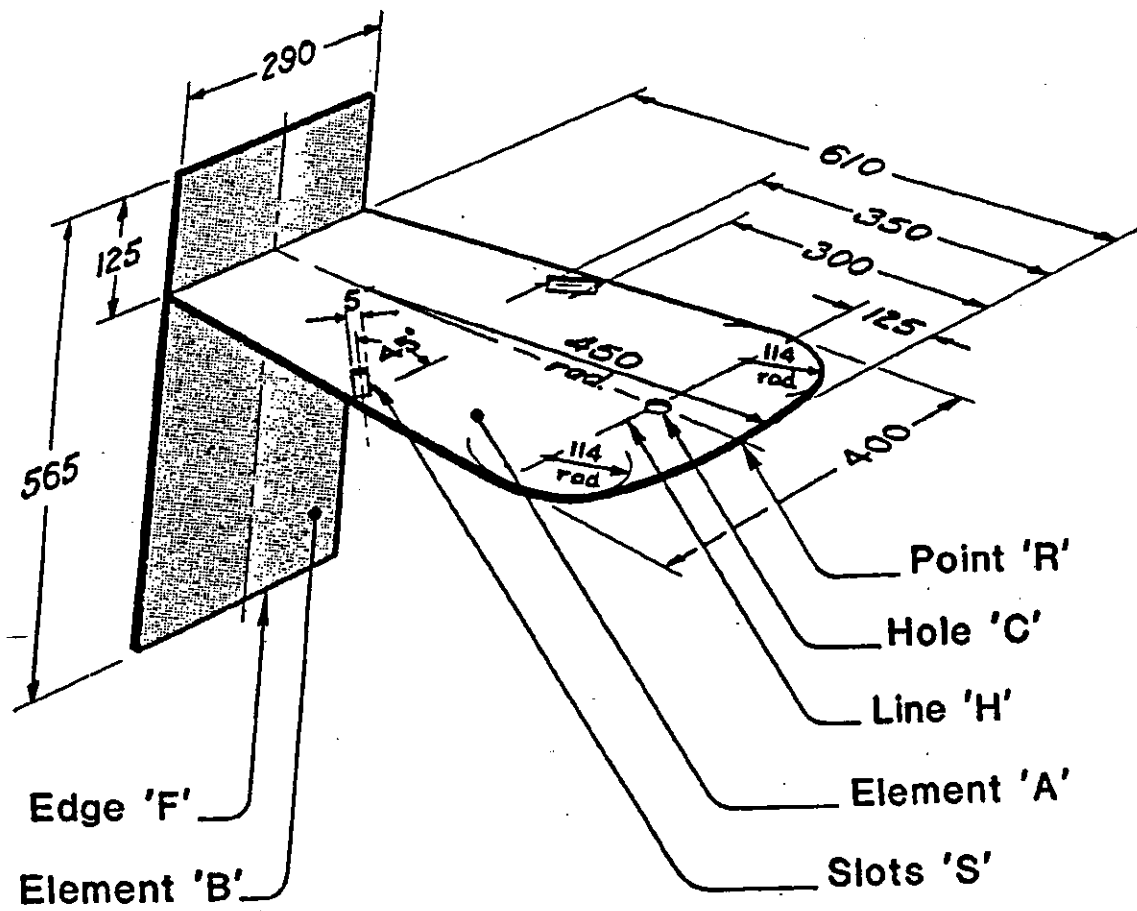
DESCRIPTION	NSW,TAS,ACT	VIC	SA	QLD
(1) PASSENGER SEATING CAPACITY (EX DRIVER)	4 TO 7	4 TO 7	4 TO 7	4 TO 5
(2) SEATING POSITIONS-TEMPLATE	TEMPLATE	TEMPLATE	TEMPLATE	N/A
(3) HEIGHT OVER SEAT	MIN 850mm	MIN 850mm	MIN 850mm	MIN 850mm
(4) SHOULDER WIDTH	MIN 400mm	MIN 400mm	MIN 400mm	
(5) WIDTH OF DOOR OPENING BELOW SEAT		MIN 280mm		N/A
(6) HEIGHT-TOP OF SEAT CUSHION TO TOP OF DOOR		MIN 670mm		
(7) HEIGHT-FLOOR TO TOP OF SEAT		MIN 330mm		MIN 300mm
(8) SEAT WIDTH	MIN 400mm	MIN 400mm		MIN 400mm
(9) SEAT DEPTH	MIN 350mm	MIN 400mm		MIN 350mm
(10) LEG ROOM	MIN 180mm	MIN 180mm	MIN 180mm	MIN 170mm
(11) SEAT COVER MATERIAL	NON-ABSORBENT	NON-ABSORBENT	NON-ABSORBENT	NON-ABSORBENT
(12) LUGGAGE REQUIREMENT	YES	YES	YES	YES
(13) AISLE WIDTH	MIN 300mm	MIN 300mm		
(14) ENTRY DOOR STEP HEIGHT FROM GROUND	MAX 410mm	MAX 410mm	MAX 410mm	
(15) ENTRY DOOR HEIGHT	MIN 1300mm	MIN 1300mm	MIN 1300mm	N/A
(16) WIDTH OF DOOR OPENING ABOVE SEAT		MIN 550mm		
(17) INTERIOR HEIGHT	MIN 1300mm	MIN 1300mm	MIN 1300mm	N/A
(18) DISTANCE BETWEEN) ABOVE SEAT CUSHION OPPOSITE FACING SEATS) BELOW SEAT CUSHION		MIN 1.2m MIN 400mm		N/A
(19) ELR LAP-SASH BELT ON OUTBOARD SEAT	ALL	ALL	ALL	

ELR = Emergency locking Retractor

(*) - The SUTI assessment covers the requirements of all registering authorities except Western Australia and Northern Territory as full requirements have not been specified. For Queensland, assessment will be limited to sedan and station wagon passenger cars only.

Table 7.1

SEATING TEMPLATE

Figure 7.1