

Tire Pressure Warning System Activation & Initialization

Service Category General

Section Pre-Delivery Service

Market USA

Toyota Supports
ASE Certification 

Applicability

YEAR(S)	MODEL(S)	ADDITIONAL INFORMATION
2011	Prius	

Introduction

The 2011 model year Prius is equipped with a direct-type Tire Pressure Warning System (TPWS). Each tire has a tire pressure warning valve/sensor, and the measured tire pressure data is transmitted to the Tire Pressure Warning System antenna/receiver to the Tire Pressure Warning System ECU.

During Pre-Delivery Service (PDS), the tire pressure warning valves/sensors must be activated according to the procedure in this bulletin.

Required Tools & Equipment

REQUIRED EQUIPMENT	SUPPLIER	PART NUMBER	QTY
TIS Techstream* or Techstream Lite NOTE: Software version 5.10.029 or later is required.	ADE	TSPKG1 or TSLITEDLR01	1

* Essential SST.

NOTE

Additional Techstream units may be ordered by calling Approved Dealer Equipment (ADE) at 1-800-368-6787.

Warranty Information

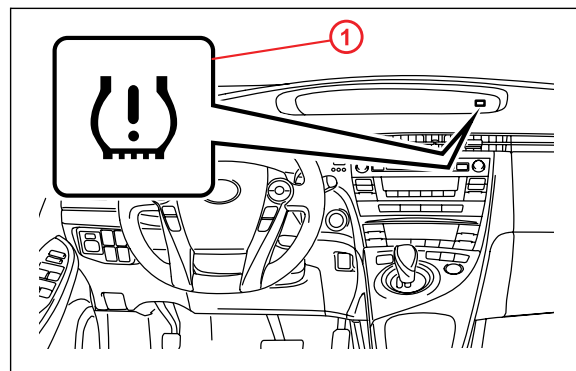
OP CODE	DESCRIPTION	TIME	OFP	T1	T2
N/A	Not Applicable to Warranty	—	—	—	—

Tire Pressure Warning System Activation & Initialization

Reference

- After cycling the ignition to the "IG-ON" position, the Low Tire Pressure Warning Light will blink for 1 minute and then remain illuminated until all the tire pressure warning valves/sensors are activated.
- The Diagnostic Trouble Codes (DTCs) listed below are stored in the TPWS ECU until the tire pressure warning valves/sensors are activated.
- The DTCs will automatically clear when the tire pressure warning valves/sensors are activated.

Figure 1.



1 Low Tire Pressure Warning Light

DTC NO. *1	DTC NO. *2	DTC EXPLANATION
11	C2111	Transmitter ID1 Operation Stop
12	C2112	Transmitter ID2 Operation Stop
13	C2113	Transmitter ID3 Operation Stop
14	C2114	Transmitter ID4 Operation Stop

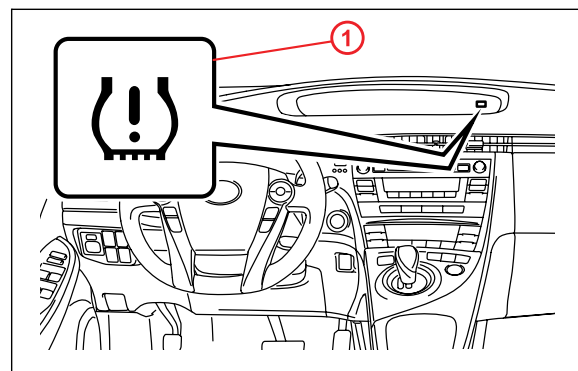
*1: DTC No. indicated by blinking of the Low Tire Pressure Warning Light.

*2: DTC No. indicated on TIS Techstream.

Activation Procedure

1. Connect TIS Techstream.
2. Cycle the ignition switch to the "IG-ON" mode and check that the Low Tire Pressure Warning Light blinks for 1 minute and then remains illuminated.

Figure 2.



1 Low Tire Pressure Warning Light

Tire Pressure Warning System Activation & Initialization

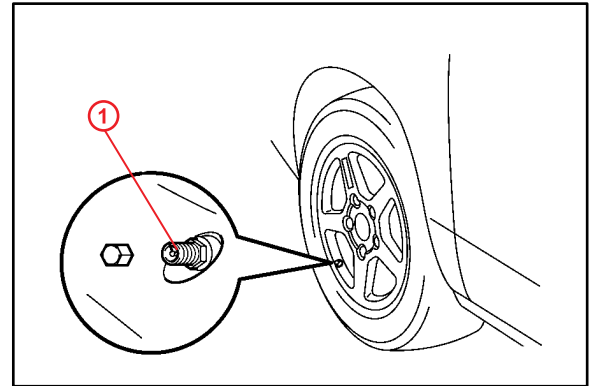
Activation Procedure (Continued)

3. Press or remove the valve core to reduce the tire inflation pressure rapidly by 6 psi (0.4 kgf/cm², 40 kPa), or more, within 30 seconds.

NOTE

This operation is required for the system to be activated and must be performed for each tire, one at a time.

Figure 3.



1 Core

4. Using TIS Techstream, check for TPWS DTCs.
If NO DTCs are stored, go to step 5.
If DTCs C2111 – C2114 are stored, repeat step 3.

HINT

If the tire inflation pressure is NOT reduced by 6 psi (0.4 kgf/cm², 40 kPa), or more, within 30 seconds, the tire pressure warning valves/sensors will NOT be activated and DTCs C2111 – C2114 will be stored in the TPWS ECU.

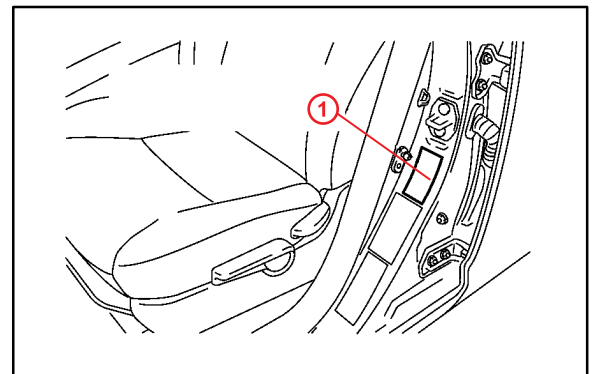
Initialization Procedure

1. Adjust all tires (except the compact spare tire) to the standard tire inflation pressure, as indicated on the Tire and Loading Information label located inside the driver's door jamb.

NOTE

To adjust tire pressure correctly when outside temperature is significantly colder or warmer than shop temperature, follow the procedures outlined in the Tire Inflation Pressure compensation and Adjustment service bulletin ([T-SB-0345-08](#)).

Figure 4.



1 Tire and Loading Information Label

2. Cycle the ignition switch to the "OFF" position and then to "IG-ON".

Tire Pressure Warning System Activation & Initialization

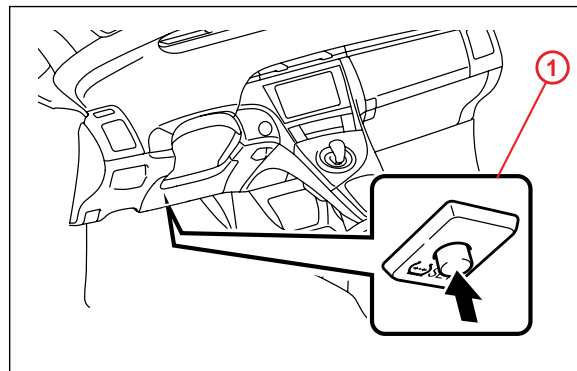
Initialization Procedure (Continued)

3. Push and hold the Tire Pressure Warning "SET" Switch for 3 seconds until the Low Tire Pressure Warning Light blinks 3 times and then turns OFF to begin the tire pressure initialization.

NOTE

It is necessary for the ignition to be in "IG-ON" mode a minimum of 5 minutes for initialization to complete correctly.

Figure 5.



1 Tire Pressure Warning "SET" Switch

4. Cycle the ignition switch to the "OFF" position and then to "IG-ON".
5. Check the tire pressure values of all the tires using TIS Techstream.

TPWS ECU / DATA LIST / TIREPRESS 1-4

NOTE

It can take 2 – 3 minutes for the tire pressure values to be displayed on the TIS Techstream Data List.