

# Abnormal Noise when Brake Pedal Released

Service  
Category Brake

Section Brake Control/Dynamic Control System Market USA

Toyota Supports  
ASE Certification 

## Applicability

YEAR(S)	MODEL(S)	ADDITIONAL INFORMATION
2010 – 2011	Prius	

## Introduction

Some 2010 Prius and early produced 2011 Prius vehicles may exhibit an abnormal noise when the brake pedal is released. The noise is typically heard when the vehicle is stopped. The ABS Actuator Skid Control Electronic Control Unit (ECU) calibration software has been revised to eliminate this noise.

See attached video below for an example of the abnormal noise.

[Prius Abnormal Brake Noise](#)

## Production Change Information

This TSB applies to vehicles produced **BEFORE** the Production Change Effective VINs shown below.

MODEL	PLANT	PRODUCTION CHANGE EFFECTIVE VIN
Prius	Tsutsumi #1	JTDKN3DU#B0248672
	Tsutsumi #2	JTDKN3DU#B1317406
	Toyota Auto Body	JTDKN3DU#B5232759

## Warranty Information

OP CODE	DESCRIPTION	TIME	OFP	T1	T2
EL1034	Reflash Brake Actuator Skid Control ECU	1.0	47050-#####	91	99

### APPLICABLE WARRANTY

- This repair is covered under the Toyota Comprehensive Warranty. This warranty is in effect for 36 months or 36,000 miles, whichever occurs first, from the vehicle's in-service date.
- Warranty application is limited to occurrence of the specified condition described in this bulletin.

## Abnormal Noise when Brake Pedal Released

### Calibration Information

MODEL	MODEL YEAR	WHEEL SIZE*	PREVIOUS CALIBRATION ID	NEW CALIBRATION ID
Prius	2010 – 2011	15 inch	F152647103 F152647104 F152647105 F152647106 F152647107	<a href="#">F152647108</a>
		17 inch	F152647123 F152647124 F152647125 F152647126 F152647127	<a href="#">F152647128</a>

\* Wheel size information can be found on the certification label, located on the driver's door jamb / B-pillar.

### Required Tools & Equipment

REQUIRED EQUIPMENT	SUPPLIER	PART NUMBER	QTY
TIS Techstream** or Techstream Lite  NOTE: Software version 5.10.029 or later is required.	ADE	TSPKG1 or TSLITEDLR01	1

#### NOTE

- Additional Techstream units may be ordered by calling Approved Dealer Equipment (ADE) at 1-800-368-6787.
- The Diagnostic Tester is NOT recommended for flash reprogramming with this calibration file. Please use TIS Techstream or an approved J2534 interface to perform this update. Visit [techinfo.toyota.com](http://techinfo.toyota.com) for more information regarding J2534 reprogramming.



SPECIAL SERVICE TOOLS (SST)	PART NUMBER	QTY
GR8 Battery Diagnostic Station**	<a href="#">00002-MCGR8</a>	1

#### NOTE

Additional SSTs may be ordered by calling 1-800-933-8335.

\*\* Essential SST.

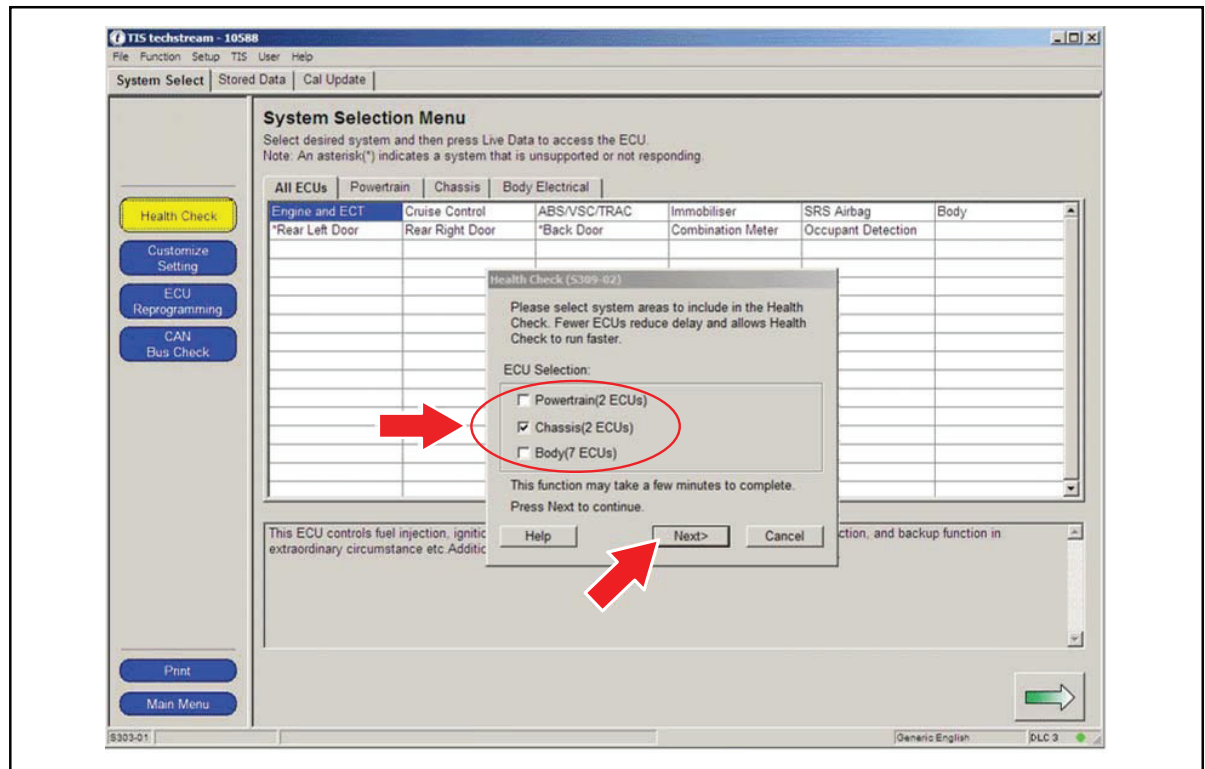


## Abnormal Noise when Brake Pedal Released

### Repair Procedure (Continued)

- C. Choose *Chassis* ECU group in the *Health Check* dialog box.

Figure 2.



- D. Click *Next*.

- E. Click *Continue* to view *Health Check* results.

Figure 3.



# Abnormal Noise when Brake Pedal Released

## Repair Procedure (Continued)

- F. Available calibration updates are indicated by a **Yes** link in the *Calibration Update* column. **STOP** before clicking the **Yes** link.

Figure 4.

Health Check Results									
System	Monitor Status	DTC	Curr	Pend	Hist	Perm	SB	Calibration	Update
Advanced Parking Guidance System	-	C168B			X		No	-	
Smart Key	-	U0155			X		No	-	
Radar Cruise	-							-	
Engine and ECT	Com							34715100	No
								A4701000	No
								896B34701000	No
Hybrid Control	-							896B54701000	No
								898844701200	No
								898844702100	No
Tire Pressure Monitor	-							-	
ABS/VSC/TRAC	-							F152647126	Yes
EMPS	-							-	
Lane Keeping Assist	-							-	
Occupant Detection	-							-	
Air Conditioner	-							-	
Combination Meter	-							-	
Main Body	-							-	
D-Door Motor	-							-	
P-Door Motor	-							-	
RR-Door Motor	-							-	
RL-Door Motor	-							-	

4. Flash reprogram the ABS Actuator Skid Control Computer.
  - A. Place the car in the "IG-ON" mode (push the Power button twice when the car is OFF – DO **NOT** depress the brake pedal).
  - B. Reflash the ABS Actuator Skid Control Computer with the newly designed software (New Calibration ID), following the procedures outlined in TSB No. [T-SB-0064-10](#), "Techstream ECU Flash Reprogramming Procedure". Please refer to the Calibration Information table in this TSB for the NEW Calibration ID.
  - C. After completing the ABS Actuator Skid Control Computer reflash, disconnect the GR8 Battery Diagnostic Station or PSC Power Supply Charger / Maintainer (MTRPSC550SKT).
5. Using Techstream, check for Diagnostic Trouble Codes (DTCs).

### NOTE

If any Pending, Current, and/or History DTCs are set, troubleshoot according to the Repair Manual.

6. Depress the brake pedal while vehicle is stopped to confirm the abnormal noise has been eliminated.