

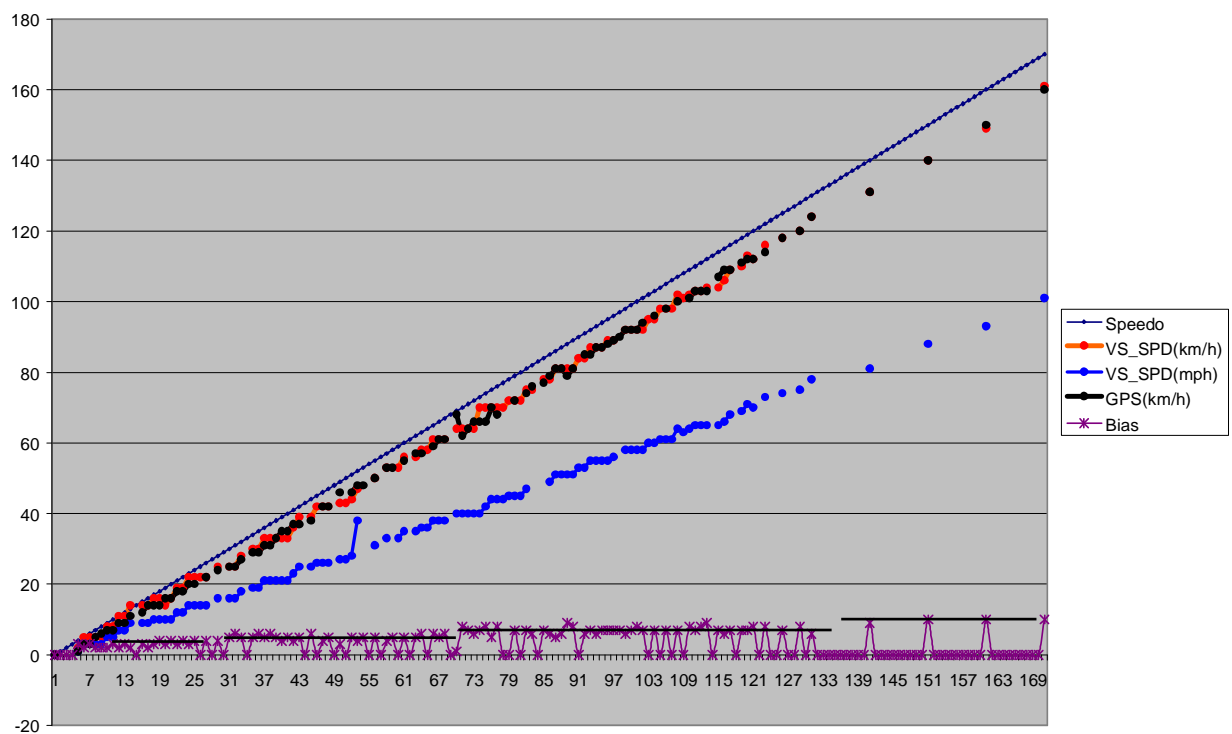
Test setup:

- Speedo
- BT GPS receiver
- System monitor
- HP Ipaq w. Navtec GPS Sw.

- Manual log chart



Chart:



It is apparent that the bias goes in steps that increases with the speed.

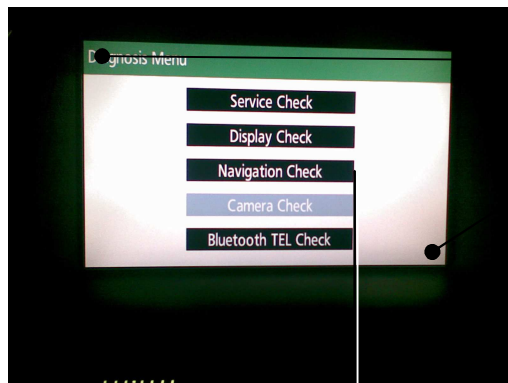
## Log Table

Speedo Km/h	VS_SPD Km/h	VS_SPD Mph	GPS Km/h	Speedo bias
0	0	0	0	-
1				-
2				-
3				-
4	2	1	1	3
5	5	3	3	2
6	5	3	3	3
7	5	3	5	2
8	5	3	6	2
9	8	5	7	2
10	8	5	7	3
11	11	7	9	2
12	11	7	9	3
13	14	9	11	2
14				-
15	14	9	12	3
16	14	9	14	2
17	16	10	14	3
18	16	10	14	4
19	14	10	16	3
20	16	10	16	4
21	19	12	18	3
22	19	12	18	4
23	22	14	20	3
24	22	14	20	4
25	22	14		-
26	22	14	22	4
27				-
28	25	16	24	4
29				-
30	25	16	25	5
31	25	16	25	6
32	28	18	27	5
33				-
34	30	19	29	5
35	30	19	29	6
36	33	21	31	5
37	33	21	31	6
38	33	21	33	5
39	33	21	35	4
40	33	21	35	5
41	36	23	37	4
42	39	25	37	5
43				-
44	39	25	38	6
45	42	26		-
46	42	26	42	4
47	42	26	42	5
48				-
49	43	27	46	3
50	43	27		-
51	44	28	46	5
52	47	38	48	4
53			48	5
54				-
55	50	31	50	5
56				-
57	53	33	53	4
58			53	5
59	53	33		-
60	56	35	55	5
61				-
62	56	35	57	5
63	58	36	57	6
64	58	36		-
65	61	38	59	6
66	61	38	61	5
67	61	38	61	6
68				-
69	64	40	68	1
70	64	40	62	8
71	64	40	64	7
72	64	40	66	6
73	70	40	66	7
74	70	42	66	8
75	70	44	70	5
76	70	44	68	8
77	70	44		-
78	72	45		-
79	72	45	72	7
80	72	45		-
81	75	47	74	7
82	75		76	6
83				-

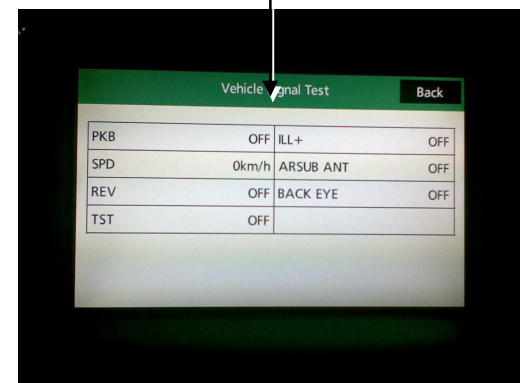
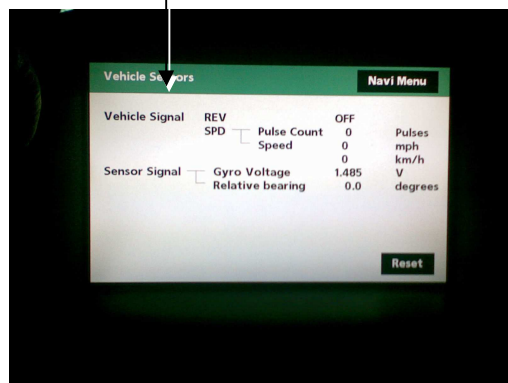
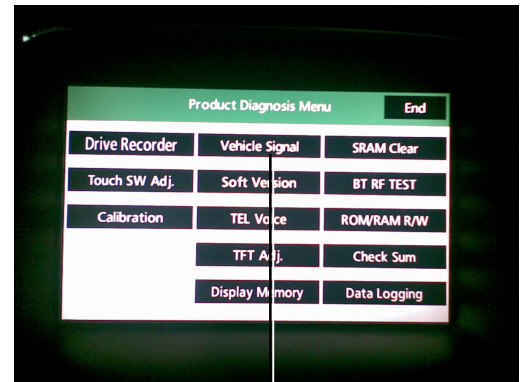
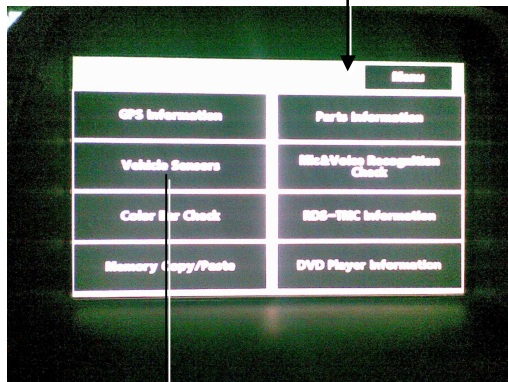
Speedo Km/h	VS_SPD Km/h	VS_SPD Mph	GPS Km/h	Speedo bias
84	78		77	7
85	78	49	79	6
86	81	51	81	5
87	81	51	81	6
88	81	51	79	9
89	81	51	81	8
90	84	53		-
91	84	53	85	6
92	87	55	85	7
93	87	55	87	6
94	87	55	87	7
95	89	55	88	7
96	89	56	89	7
97			90	7
98	92	58	92	6
99	92	58	92	7
100	92	58	92	8
101	92	58	94	7
102	95	60		-
103	95	60	96	7
104	98	61		-
105	98	61	98	7
106	98	61		-
107	102	64	100	7
108	101	63		-
109	102	64	101	8
110	103	65	103	7
111	103	65	103	8
112	104	65	103	9
113				-
114	104	65	107	7
115	106	66	109	6
116	109	68	109	7
117				-
118	110	69	111	7
119	113	71	112	7
120	112	70	112	8
121				-
122	116	73	114	8
123				-
124				-
125	118	74	118	7
126				-
127				-
128	120	75	120	8
129				-
130	124	78	124	6
131				-
132				-
133				-
134				-
135				-
136				-
137				-
138				-
139				-
140	131	81	131	9
141				-
142				-
143				-
144				-
145				-
146				-
147				-
148				-
149				-
150	140	88	140	10
151				-
152				-
153				-
154				-
155				-
156				-
157				-
158				-
159				-
160	149	93	150	10
161				-
162				-
163				-
164				-
165				-
166				-
167				-
168				-
169				-
170	161	101	160	10

## Data from the MFD

Open the [Display] menu, tap the upper left corner and the lower left corner (inside the marked area) three times. Exit that menu and you will get to the diagnosis menu.



If you tap the upper left and then the lower right corner of the Diagnosis menu, the Product Diagnosis menu below will be displayed. The VS\_SPD here seems to be “smoother” and increments in steps of 1.



This is the data source I used for VS\_SPD